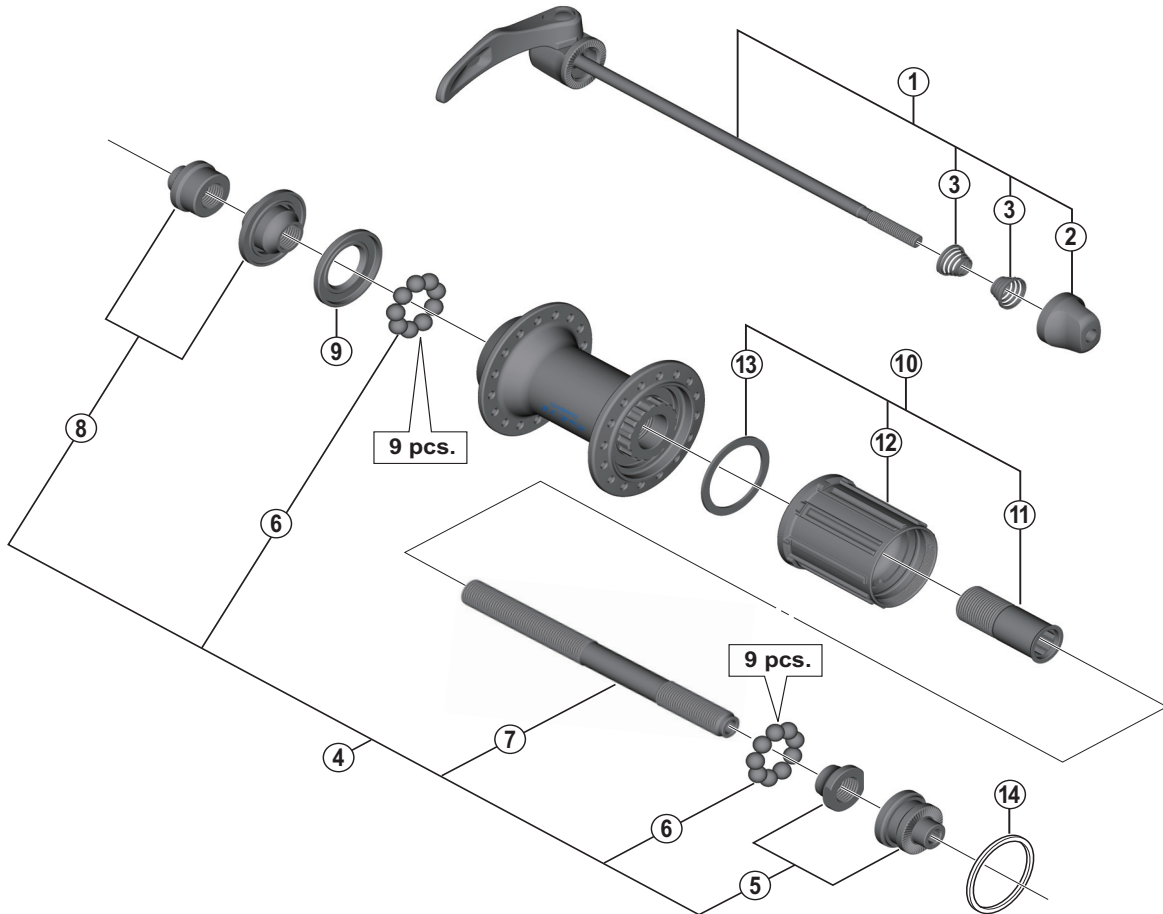


SHIMANO 105 Freehub (10/11-speed)

**FH-5800-S** Silver Version

**FH-5800-L** Black Version



• Over Lock Nut Dimension: 130 mm (5-1/8")

ITEM NO.	SHIMANO CODE NO.	DESCRIPTION	INTERCHANGEABILITY	
1	Y31F98010	Complete Quick Release 163 mm (6-13/32")		
	Y31F98020	Complete Quick Release 168 mm (6-5/8")		
2	Y4CP98080	Quick Release Nut		
3	Y23111000	Volute Spring		
4	Y31F98030	Complete Hub Axle		
5	Y31F98040	Right Hand Lock Nut Unit		
6	Y00091310	Steel Ball (1/4") 18 pcs.	A	
7	Y31F07000	Hub Axle (M10)		
8	Y31F98050	Left Hand Lock Nut Unit		
9	Y3CR09000	Left Hand Seal Ring	A	
10	Y31F98070	Complete Freewheel Body		
11	Y3BL03000	Body Fixing Bolt	A	
12	Y31F98080	Freewheel Body Unit		
13	Y3TD06000	Hub Shell Spacer		
14	Y4T724000	Low Spacer (1.85 mm)		

A: Same parts.

B: Parts are usable, but differ in materials, appearance, finish, size, etc.

Absence of mark indicates non-interchangeability.

Specifications are subject to change without notice.

FH-5700

Feb.-2016-3719A

© Shimano Inc. I

**SHIMANO**