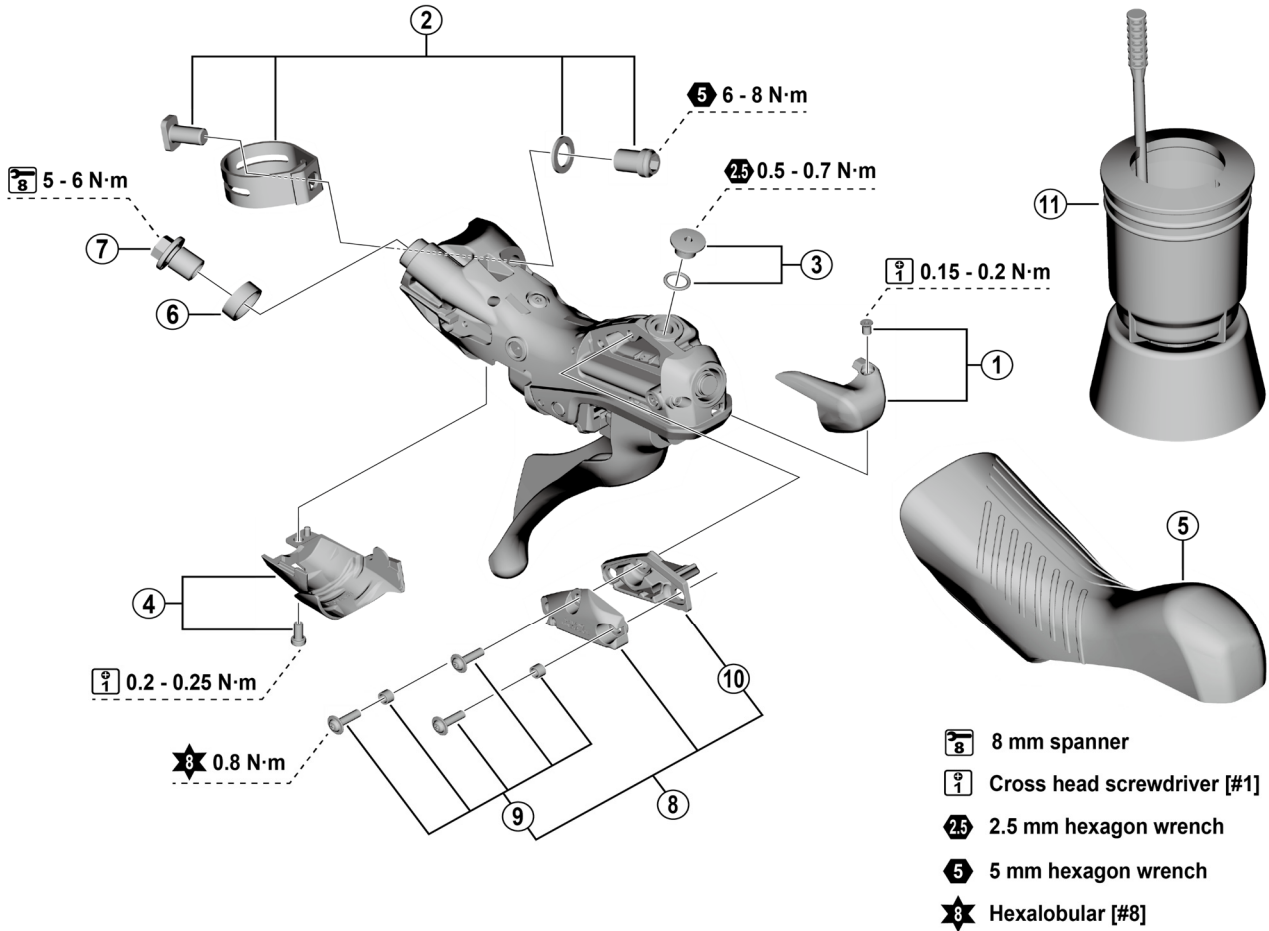


GRX Brake Lever (For Disc Brake)

BL-RX820-L



| ITEM NO. | SHIMANO CODE NO. | DESCRIPTION | INTERCHANGEABILITY |
|----------|------------------|---|--------------------|
| 1 | Y0RZ98010 | Name plate L and fixing screw | B |
| 2 | Y0E098030 | Clamp band unit diameter (23.8 - 24.2 mm) | A |
| 3 | Y0MX98020 | Bleed screw and O-ring | B |
| 4 | Y0C598020 | Unit cover L and fixing screw | A |
| 5 | Y0RY98010 | Bracket covers (pair) | B |
| 6 | Y0RM9801T | Joint support ring | B |
| 7 | Y8RD02000 | Flange flare nut (M9/black) | A |
| 8 | Y0C598030 | Left-hand lid unit | A |
| 9 | Y0C698070 | Lid fixing screw (3 pcs.) and lid spacer (2 pcs.) | A |
| 10 | Y0C578000 | Diaphragm L | A |
| 11 | Y13000090 | TL-BR002 Funnel unit for M7 screw | A |

A: Same parts.

B: Parts are usable, but differ in materials, appearance, finish, size, etc.

Absence of mark indicates non-interchangeability.

Specifications are subject to change without notice.

Torque information is listed.

Sep.-2023-5008

© Shimano Inc. I

SHIMANO