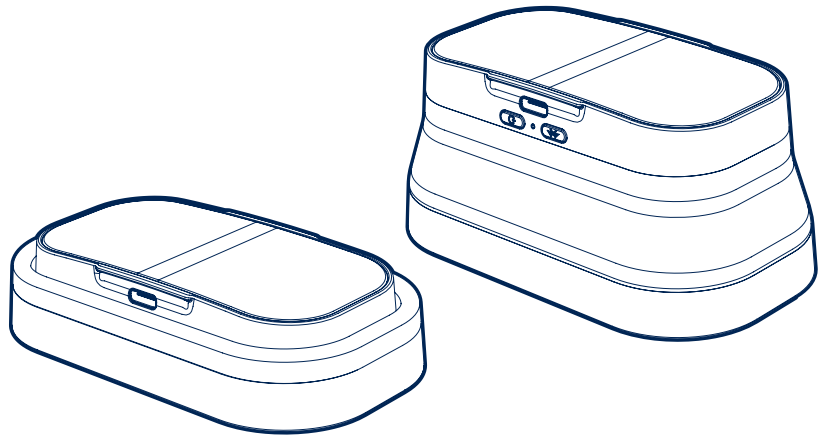


EXPANDABLE WIRELESS SPEAKER MO™

Usage Instructions



POWER UP

Charge time 2 hours
USB-C cable included

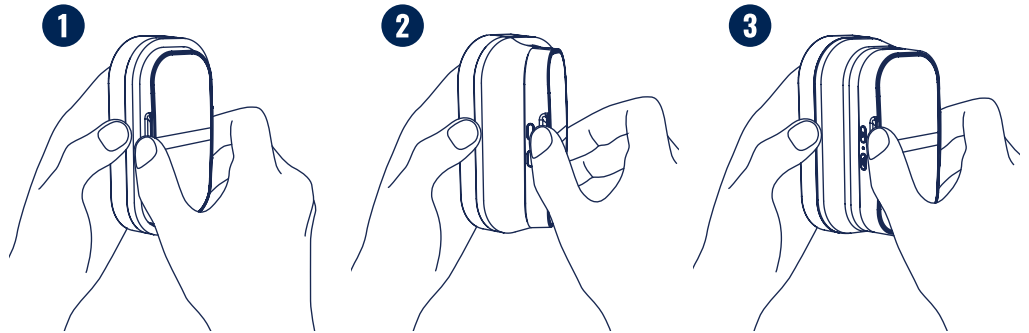
- Red light: Charging
- No light: Charged

When your Mo is fully charged with the power off, the light will turn off.

WAVEBLOOM™ AUDIO EXPANSION TECHNOLOGY

EXPAND

Firmly hold grip plate and pop Mo out one side at a time.



PLAY

1. Expand Mo.
 2. Press the power button.
 3. Press the Bluetooth button to begin pairing.
 4. Accept Mo on the sound source.
- Blue light: On
 - Blinking blue light: Ready to Pair
 - Solid blue light: Paired

If you do not see Mo available on the sound source, make sure Bluetooth is turned on for both, your Mo is charged and your sound source is searching for available devices.



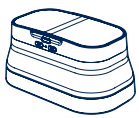
STEREO SYNC

Once your POW Mo is paired with a sound source, you can sync a second Mo to split stereo L/R channels and boost amplitude for an immersive sound experience.

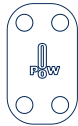
1. Power on the second Mo.
2. Press and hold the Bluetooth button on the first paired Mo for 3 seconds until the light blinks green ● and you hear the tone. It is now ready to sync.
3. Short press Bluetooth on the second Mo until you see a solid green light ● The second Mo is now synced.

RESET

In case you need to reset Mo, hold down the power button for 8 seconds.



MO SPEAKER



UNIVERSAL MOUNT



MAGNETIC WALLET

EXPAND YOUR SOUND

Go to powaudio.com to register your product for our best support. You can also find warranty details, updates and other helpful information. Let us know about your POW experience. We'd love to hear from you.



POWAUDIO.COM @powaudio