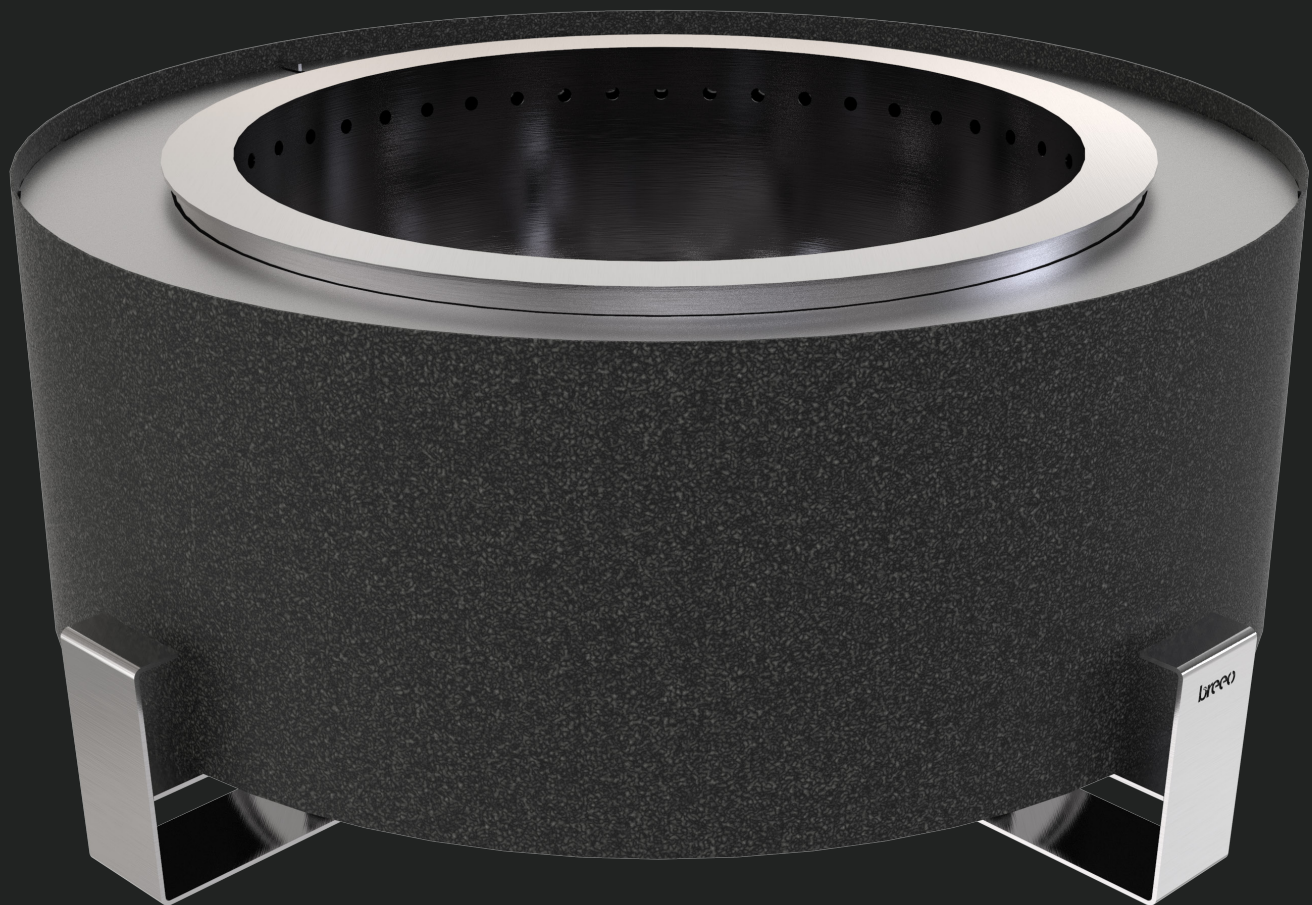


BREED

LUXEVE FIRE PIT USER GUIDE



STARTING A FIRE IN YOUR LUXEVE FIRE PIT:

- 1** | GATHER STARTER MATERIAL (CARDBOARD OR PAPER), SMALL PIECES OF KINDLING, AND DRY, SPLIT HARDWOOD.
- 2** | LAY STARTER MATERIAL ON BOTTOM OF FIRE PIT, SURROUND WITH KINDLING, THEN LIGHT STARTING MATERIAL
- 3** | CONTINUE TO ADD KINDLING TO BEGINNING FLAME, THEN SLOWLY ADD WOOD, ONE LOG AT A TIME.
- 4** | AS FIRE BURNS, CONTINUE ADDING LOGS ONE AT A TIME. FOR BEST RESULTS, LOGS SHOULD BE APPROXIMATELY 3-4 INCHES IN DIAMETER.
- 5** | KEEP FIRE SPREAD EVENLY THROUGHOUT THE FIRE PIT AS IT BURNS. HAVING HOT COALS AND FIRE DIRECTLY AGAINST THE WALLS OF THE FIRE PIT INCREASES SMOKE REDUCTION.

FOR YOUR SAFETY:

The Luxeve Fire Pit is designed for outdoor use only. **Never burn your Luxeve Fire Pit in a building, garage, or any enclosed area.**

Always use your Luxeve Fire Pit on a level, non-combustible surface such as concrete, rock or stone. **Do not use on wooden or composite decks.**

Do not attempt to move or store your Luxeve Fire Pit until all ashes and coals are completely extinguished and all surfaces have cooled completely. Never touch ashes or coals to see if they are hot.

All surfaces of the Luxeve Fire Pit will become extremely hot when in use. To avoid burns, do not touch any part of the Luxeve Fire Pit until it has completely cooled unless you are using protective gear (potholders, gloves, BBQ mittens, hot pads, etc.).

When using your Luxeve Fire Pit, exercise the same precautions you would with any open fire. **Never leave your Luxeve Fire Pit unattended, especially around children and pets.**

CARING FOR YOUR LUXEVE FIRE PIT:

Your Luxeve Fire Pit is built out of a high quality 304 stainless steel, which should never rust, allowing you leave your fire pit out in the elements all year long! This material will naturally develop a beautiful patina finish over time and requires no maintenance.

Because of the X Airflow™ technology incorporated in your Luxeve Fire Pit, **expect to clean out your Luxeve Fire Pit only after 3-6 burns or once the ash has reached the holes in the X Airflow™ base.** Wait until your Luxeve Fire Pit has cooled completely, then use a Breeo Ash Removal Tool or small hearth shovel to scoop out the ashes and dispose of in a safe area.

Always clean the ashes out of your Phoenix Fire Pit™ before storing or if not in use for long periods of time.

PROPER BURN TECHNIQUES:

The Luxeve Fire Pit utilizes a double-wall, secondary combustion design to reduce smoke during use. When the fire is burning, the walls of the fire pit heat up and hot air rises through the gap between the two walls. The air exits the wall cavity through the line of holes around the inside rim. This pressurized, heated oxygen mixes with the smoke and causes it to reburn. Use the following tips to maximize the smoke reduction of your Luxeve Fire Pit.

Only burn dry, well-seasoned hardwood in your Luxeve Fire Pit, as it will burn hotter and more completely, which aids in greater smoke reduction. Wet wood will take longer to begin burning, and will produce more smoke.

Burn hardwoods such as birch, maple, oak, hickory, etc. as they burn longer, hotter, and produce less smoke than softwoods. **Avoid burning pine or cedar wood in your Luxeve Fire Pit.**

Do not use a grate to keep the logs off the bottom of your Luxeve Fire Pit. One of the keys to acquiring maximum smoke reduction is to allow both the bottom and side walls of the fire pit to heat up, which will then force the oxygen up through the double walls and out the holes in the top, causing the secondary combustion. If you keep your logs raised up off the bottom of your fire pit on a grate, the bottom of your smokeless fire pit will not attain the heat needed for smoke reduction.

Be sure to have hot coals and fire burning against the inside wall of the fire pit. This will provide more heat in the double-walled air chamber, which in turn will provide a more aggressive air current up through the air chamber, forcing the secondary combustion that is vital to a smokeless fire.

Keep your fire burning as hot as possible. A larger fire means more heat, and more heat will cause more secondary combustion, which in turn produces less smoke.

Please note that adding logs to your fire causes the fire to burn cooler, so allow approx. 10-20 minutes at the start of the fire for the smoke to dissipate, and add logs one at a time throughout burn time to avoid an increase of smoke.

To extinguish the fire, simply allow the flames to go out on their own, if possible. However, if immediate extinguishing is needed, use a minimal amount of water to douse the flames. Excess water sitting on the bottom of the fire pit is very hard on the fire pit and can cause rusting, so use just enough water to put out the fire, letting the water vaporize, to keep your fire pit in the best condition possible.



LIMITED LIFETIME WARRANTY

BREEO, LLC WARRANTS TO THE ORIGINAL PURCHASER THAT THE BREEO FIRE PITS AND ACCESSORIES ARE FREE FROM WORKMANSHIP AND MATERIAL DEFECTS DURING THE LIFETIME OF THE ORIGINAL PURCHASER. IF A PRODUCT IS DEFECTIVE, BREEO, LLC, AT ITS OPTION, WILL REPAIR OR REPLACE WITH A NEW PRODUCT FREE OF CHARGE, EXCLUDING ANY APPLICABLE SHIPPING AND HANDLING CHARGES. IF THE PRODUCT BEING WARRANTED HAS BEEN DISCONTINUED, THE REPLACEMENT PRODUCT WILL BE OF EQUAL OR SIMILAR VALUE. ALTERING ANY BREEO PRODUCT, OR USING THE PRODUCT IN ANY WAY OTHER THAN THE INTENDED USE, WILL VOID THIS LIFETIME WARRANTY. NO WARRANTY IS OFFERED ON RUST, PAINT OR FINISHES DUE TO BEING MADE WITH MATERIAL WITH POTENTIAL FOR CORROSION. STEEL PRODUCTS WILL DEVELOP A NATURAL IRON OXIDE PATINA OVER TIME.

BREEO, LLC'S LIABILITY AND OBLIGATION IS LIMITED TO REPAIR OR REPLACEMENT OF THE PRODUCT, AT THEIR OPTION. THE PURCHASER MUST PROVIDE BREEO, LLC WITH PHOTOS OF THE PRODUCT'S DEFECTS FOR EVALUATION. UPON APPROVAL OF WARRANTY, BREEO, LLC WILL ISSUE A RETURN FOR REPAIR, OR RETURN FOR EXCHANGE OF THE DEFECTIVE PRODUCT.

THIS WARRANTY DOES NOT COVER DAMAGE OR PRODUCT FAILURE CAUSED BY ACCIDENT, MISUSE, NEGLIGENCE, TAMPERING, MODIFICATIONS, ACT OF WAR, OVERLOADING, IMPROPER ATTACHMENT, IMPROPER MAINTENANCE, OR FAILURE TO MAINTAIN. BREEO, LLC IS HELD HARMLESS FOR ANY INJURY OR DEATH CAUSED BY THE MISUSE OF THIS PRODUCT.

THIS WARRANTY GIVES YOU SPECIFIC LEGAL RIGHTS PROVIDING SAID PRODUCT IS PUT TO ITS PROPER DESIGNATED USE.

THIS WARRANTY IS EXPRESSLY IN LIEU OF ALL OTHER WARRANTIES, EXPRESS OR IMPLIED, INCLUDING THE WARRANTY OF MERCHANTABILITY AND FITNESS FOR A PARTICULAR PURPOSE. NO ORAL AGREEMENT, GUARANTEE, PROMISE, REPRESENTATION OR WARRANTY SHALL BE BINDING. IN NO EVENT WILL BREEO, LLC BE LIABLE FOR ANY SPECIAL, INDIRECT, INCIDENTAL OR CONSEQUENTIAL DAMAGES EVEN IF BREEO, LLC HAS BEEN ADVISED OF THE POSSIBILITY OF SUCH DAMAGES AND EVEN IF BREEO, LLC HAS KNOWLEDGE THAT FAILURE TO PERFORM COULD CAUSE CONSEQUENTIAL ECONOMIC LOSSES. IN ANY EVENT, CUMULATIVE DAMAGES FOR BREACH OF THIS WARRANTY WILL BE LIMITED TO THE AMOUNT ACTUALLY PAID TO BREEO, LLC FOR THE PRODUCT. THIS PARAGRAPH SHALL APPLY TO ALL ACTIONS RELATED TO THE PRODUCT, WHETHER BASED ON TORT, CONTRACT OR OTHER THEORIES. THE PURCHASER ACKNOWLEDGES THAT THIS PARAGRAPH ALLOCATES THE RISK OF PRODUCT FAILURE BETWEEN BREEO, LLC AND THE PURCHASER, AND THAT THIS ALLOCATION IS REFLECTED IN THE PRICE PAID.



BREEO

WWW.BREEO.CO | INFO@BREEOLLC.COM | 800.413.9848