

BIOWRAP

SMARTER WEARABLE TECHNOLOGY

Quick Reference Guide

KNEE BIOWRAP

BLUE

Compression Electrode Garment

Utilizes Velcro-Backed Gel Electrodes



See video at
biowave.com/support/biowrap



NOTE: ONLY for use with BioWave Neurostimulators.

Questions? Call us!

1-877-BIOWAVE • (1-877-246-9283)

support@biowave.com

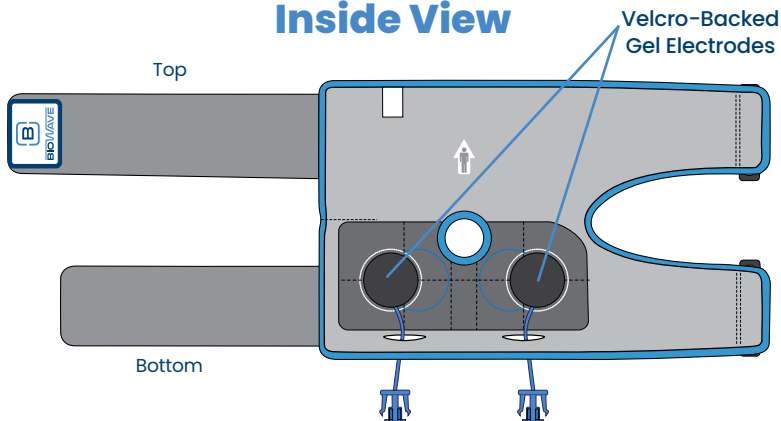
Size

	Circumference Around Kneecap
S/M	12" - 15.5"
L/XL	15.5" - 19"

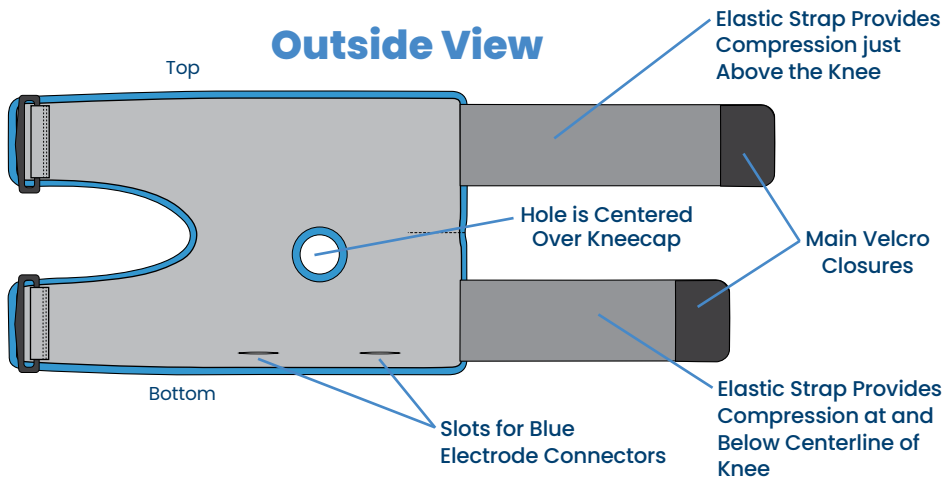
This Package Contains

- One BLUE Knee BioWrap Compression Electrode Garment - for use on LEFT or RIGHT knee.
- Two Pairs of BioWave Velcro-backed gel electrodes.

Inside View



Outside View



Quick Set Up and Use

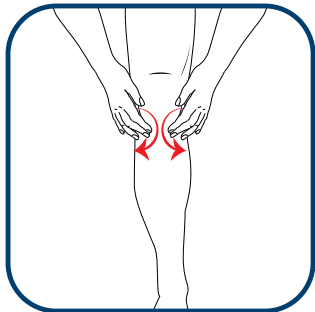
See video at biowave.com/support/biowrap

1. Place the Velcro-backed side of each electrode directly onto the two same colored circles on both sides of the inside of the BioWrap. Choose the placement of the gel electrodes so they will be located directly over the location the pain presents on each side of your knee. Blue circles are for pain presenting closer to the front of the knee, white circles are for pain presenting further to each side of the knee.
2. Thread the Blue Electrode Connector through the slot beneath the electrode so the connector sticks out on the back side of the BioWrap.
3. Plug the Blue Electrode Connectors into your BioWave Leadwire Cable.
4. Remove (and save) the plastic liner from the gel side of the electrode.
5. Clean your skin with soap and water using a washcloth in the location the electrodes will touch.
6. See diagrams on the following pages to put on the BioWrap and velcro it closed firmly so there is strong but comfortable compression over the gel electrodes.
7. Plug the single end of the leadwire cable into the BioWave device.
8. Press the power button to turn on the BioWave device.
9. Start the treatment by pressing the PLUS (+) button to increase intensity so the sensation felt is strong but still comfortable. As your body adapts to the electrical field and the sensation fades, keep pressing the PLUS (+) button to increase the intensity to maintain a strong but comfortable sensation at the treatment location.
10. When the 30-minute treatment is over, remove the BioWrap from your knee, disconnect the BioWave Leadwire Cable from the electrode connectors and place the plastic liner back over the gel electrodes. BioWave Gel electrodes may remain velcroed into the BioWrap.

Directions for Use

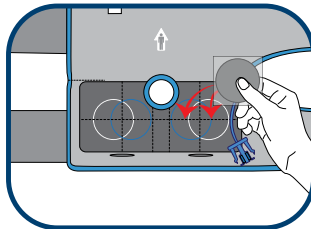
These instructions are for attaching the GO RX Knee BioWrap to the RIGHT or LEFT knee.

1.

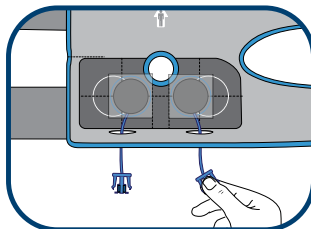


Clean your skin on each side and the front of your knee with a washcloth using soap and water in the location the gel electrodes will touch your skin.

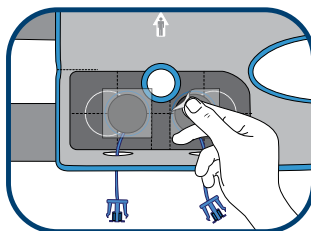
2.



Place the Velcro-backed side of each electrode directly onto two same colored circles on both sides of the inside of the BioWrap. Blue circles are for pain closer to the front of the knee, white circles are for pain presenting further to each side of the knee.

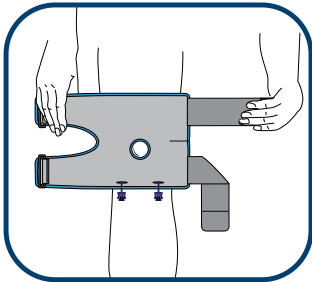


Thread Blue Electrode Connectors through slot beneath each electrode.



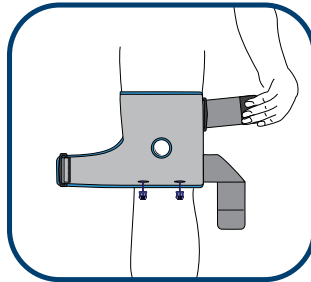
Remove (and save) the plastic liner from the gel side of the electrode.

3.



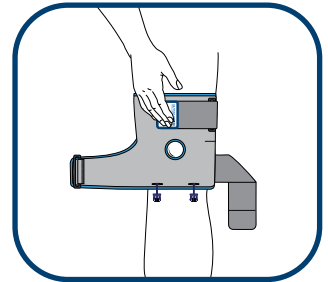
Line up hole over center of your kneecap. Make sure gel electrodes on inside of BioWrap line up directly over painful areas on your knee.

4.



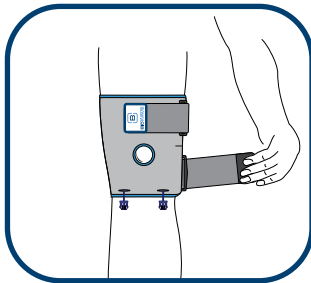
Insert top elastic strap through top D-ring. Pull elastic strap so BioWrap is tight. Make sure hole stays centered over kneecap.

5.



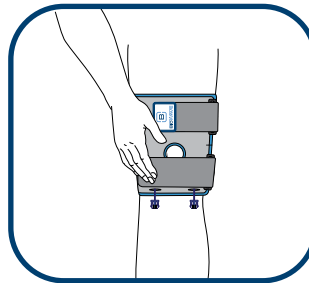
Pull top strap across front of knee so BioWrap is tight. Secure top Velcro strap to close. Make sure hole stays centered over kneecap.

6.



Insert lower elastic strap through lower D-ring. Pull elastic strap so BioWrap is tight. Make sure hole stays centered over kneecap.

7.



Pull lower strap across front of knee so BioWrap is tight. Secure Velcro strap to close.

Questions?

biowave.com/support/biowrap • support@biowave.com

+1-877-BIOWAVE (+1-877-246-9283)

TROUBLESHOOTING

My BioWave is showing a connection error but my BioWrap is plugged in

If your BioWave device shows a connection error when you are fully connected to the BioWrap, remove the BioWrap and follow these steps:

If you forgot to clean your skin:

- **CLEAN YOUR SKIN.** Remove BioWrap and clean your skin with soap and water in the region that the gel electrodes touch your skin. Shave any excessive hair in the locations that the gel electrodes touch your skin.
- **FOLLOW STEP 3 THROUGH 7 ON THE PRIOR PAGE** to reattach gel electrodes and BioWrap to your lower back.

If the gel electrodes are not tacky to the touch:

- **PLEASE USE A NEW PAIR OF VELCRO-BACKED GEL ELECTRODES.**

How tight should the BioWrap feel?

The compression straps should be pulled and velcroed down so that compression is tight but support is comfortable.

- **Tighter Compression = Stronger Treatment Sensation.**
- **Looser Compression = Less Treatment Sensation.**

Questions? Call us!

Call technical support:

1-877-BIOWAVE

(1-877-246-9283)

biowave.com/support/biowrap

support@biowave.com

IMPORTANT

Contraindications When Not to Use BioWrap

- **DO NOT** use if you have an implanted cardiac pacemaker.
- **DO NOT** place the Velcro-backed gel electrodes over open wounds, broken skin, rashy skin or sensitive skin areas like sunburned skin.

NOTE:

- Velcro-backed gel electrodes **MAY BE PLACED** over or in the proximity of implanted orthopedic hardware, including total joint replacements, anchors, plates, rods, screws, pins and clips

Cleaning

- Remove Velcro-backed gel electrodes before washing.
- The BLUE BioWrap may be hand washed, or washed in a washing machine on a gentle cycle.
- **AIR DRY.**
- **DO NOT** dry clean.



Need help?

Contact us at:

1-877-BIOWAVE • (1-877-246-9283)

support@biowave.com

The information, including but not limited to text, graphics, images and other material contained herein are for informational purposes only. **Learn more at [BioWave.com/terms-of-use](https://www.biowave.com/terms-of-use)**



Agenoria Medical Ltd.
Blair House
Upper O'Connell St.
Ennis, Co Clare
Ireland

