

Quick Reference Guide

BACK BIOWRAP

BLUE

Compression
Electrode Garment

Utilizes Velcro-Backed Gel Electrodes



NOTE: ONLY for use with BioWave Neurostimulators.



See video at
biowave.com/support/biowrap

Questions? Call us!

1-877-BIOWAVE • (1-877-246-9283)

support@biowave.com

Size

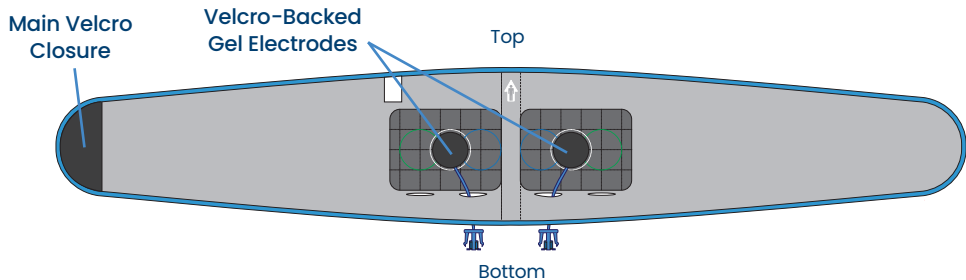
Waist Size	
S/M	28" - 38"
L/XL	38" - 50" *

*51-60" requires Back Extender

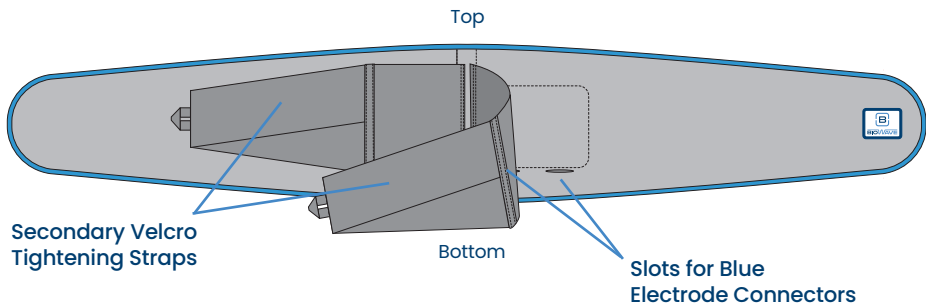
This Package Contains

- One BLUE Back BioWrap Compression Electrode Garment
- Two Pairs of BioWave Velcro-backed Gel Electrodes

Inside View



Outside View



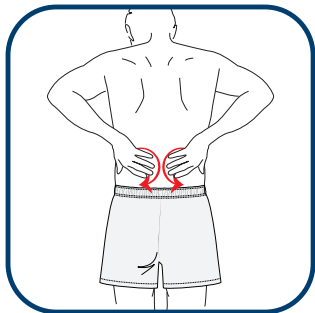
Quick Set Up and Use

See video at biowave.com/support/biowrap

1. Place the Velcro-backed side of each electrode directly onto the two same colored circles on both sides of the inside of the BioWrap. Choose the placement of the gel electrodes so they will be located directly over the location the pain presents on your lower back. Blue circles are for pain closest to the spine, green circles are for pain presenting furthest away from the spine. White circles are for the typical low back pain location.
2. Thread the Blue Electrode Connector through the slot beneath the electrode so the connector sticks out on the back side of the BioWrap.
3. Plug the Blue Electrode Connectors into your BioWave Leadwire Cable.
4. Remove (and save) the plastic liner from the gel side of the electrode.
5. Clean your skin with soap and water using a washcloth in the location the electrodes will touch.
6. See diagrams on the following pages to put on the BioWrap and velcro it closed firmly so there is strong but comfortable compression over the gel electrodes.
7. Plug the single end of the leadwire cable into the BioWave device.
8. Press the power button to turn on the BioWave device.
9. Start the treatment by pressing the PLUS (+) button to increase intensity so the sensation felt is strong but still comfortable. As your body adapts to the electrical field and the sensation fades, keep pressing the PLUS (+) button to increase the intensity to maintain a strong but comfortable sensation at the treatment location.
10. When the 30-minute treatment is over, remove the BioWrap from your body, disconnect the BioWave Leadwire Cable from the electrode connectors and place the plastic liner back over the gel electrodes. BioWave Gel electrodes may remain velcroed into the BioWrap.

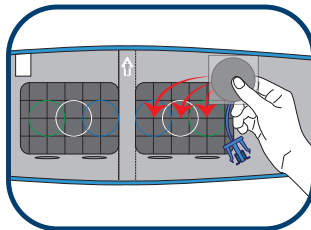
Directions for Use

1.

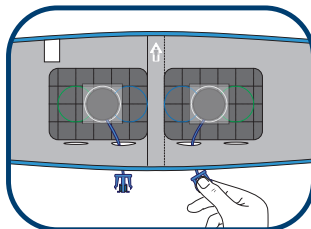


Clean your skin on your low back with a washcloth using soap and water in the location the gel electrodes will touch your skin.

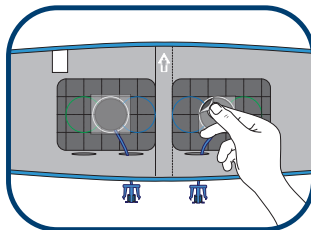
2.



Place Velcro-backed side of each electrode directly onto two same colored circles on both sides of the inside of the BioWrap. Blue circles are for pain closest to the spine, green circles are for pain presenting furthest away from the spine. White circles are for the typical low back pain location.

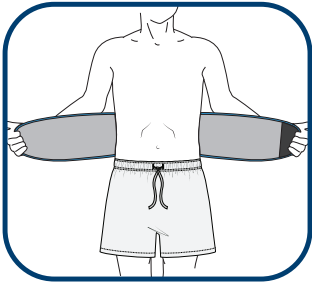


Thread Blue Electrode Connectors through slot beneath each electrode.



Remove (and save) the plastic liner from the gel side of the electrode.

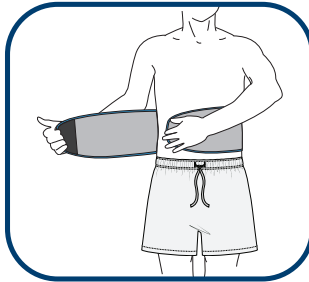
3.



Attach your BioWave Leadwire cable to the two connectors on the back of the BioWrap

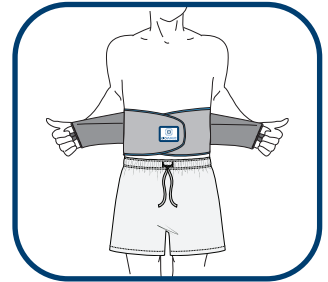
Line up gel electrodes on inside of BioWrap over painful areas on your low back.

4.



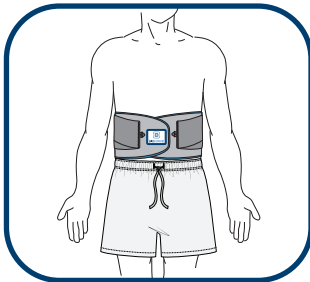
Wrap left side around stomach.
Wrap right side around stomach, pull tight, and attach Velcro closure over left side.

5.



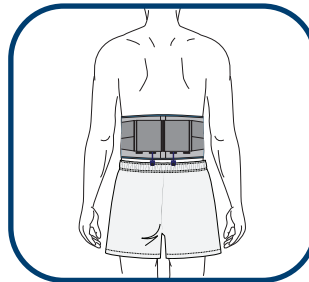
Unhook secondary straps on front of BioWrap.

6.



Pull forward and Velcro down on front of BioWrap to further tighten BioWrap over your low back.

7.



BioWrap should provide tight but comfortable compression across your lower back

Questions?

biowave.com/support/biowrap • support@biowave.com

+1-877-BIOWAVE (+1-877-246-9283)

TROUBLESHOOTING

My BioWave is showing a connection error but my BioWrap is plugged in

If your BioWave device shows a connection error when you are fully connected to the BioWrap, remove the BioWrap and follow these steps:

If you forgot to clean your skin:

- **CLEAN YOUR SKIN.** Remove BioWrap and clean your skin with soap and water in the region that the gel electrodes touch your skin. Shave any excessive hair in the locations that the gel electrodes touch your skin.
- **FOLLOW STEP 3 THROUGH 7 ON THE PRIOR PAGE** to reattach gel electrodes and BioWrap to your lower back.

If the gel electrodes are not tacky to the touch:

- **PLEASE USE A NEW PAIR OF VELCRO-BACKED GEL ELECTRODES.**

How tight should the BioWrap feel?

The compression straps should be pulled and velcroed down so that compression is tight but support is comfortable.

- **Tighter Compression = Stronger Treatment Sensation.**
- **Looser Compression = Less Treatment Sensation.**

Questions? Call us!

Call technical support:

1-877-BIOWAVE

(1-877-246-9283)

biowave.com/support/biowrap

support@biowave.com

IMPORTANT

Contraindications When Not to Use BioWrap

- **DO NOT** use if you have an implanted cardiac pacemaker.
- **DO NOT** place the Velcro-backed gel electrodes over open wounds, broken skin, rashy skin or sensitive skin areas like sunburned skin.

NOTE:

- Velcro-backed gel electrodes **MAY BE PLACED** over or in the proximity of implanted orthopedic hardware, including total joint replacements, anchors, plates, rods, screws, pins and clips

Cleaning

- Remove Velcro-backed gel electrodes before washing.
- The GO Rx BioWrap may be hand washed, or washed in a washing machine on a gentle cycle.
- **AIR DRY.**
- **DO NOT** dry clean.



Need help?

Contact us at:

1-877-BIOWAVE • (1-877-246-9283)

support@biowave.com

The information, including but not limited to text, graphics, images and other material contained herein are for informational purposes only. **Learn more at [BioWave.com/terms-of-use](https://www.biowave.com/terms-of-use)**



Agenoria Medical Ltd.
Blair House
Upper O'Connell St.
Ennis, Co Clare
Ireland

