

BALANCE PAD

Add Instability to Any Environment



Made from closed-cell foam for hygiene and can be wiped clean



Non-slip material for secure footing



Over 2" thick to decrease impact on joints and for use in exercise routines

BALANCE PAD

Add Instability to Any Environment

SKU: WBSB4C

Product Description

The Balance Pad creates a slightly unstable standing surface, giving the sensation of floating. Each foot moves independently, forcing the body to balance and work the ankles and lower legs. The Balance Pad can be integrated into exercise routines to add difficulty or to speed up rehabilitation. It can also be used in the office to provide an unstable standing surface. The Balance Pad is a versatile and portable tool that anyone can use!

Technical Specifications

Length	Width	Height	Shipping Dimensions	Weight
18.5"	14.5"	2"	19" x 25" x 2"	3lbs

Materials

Thermoplastic elastomer (TPE) foam

Made in Canada

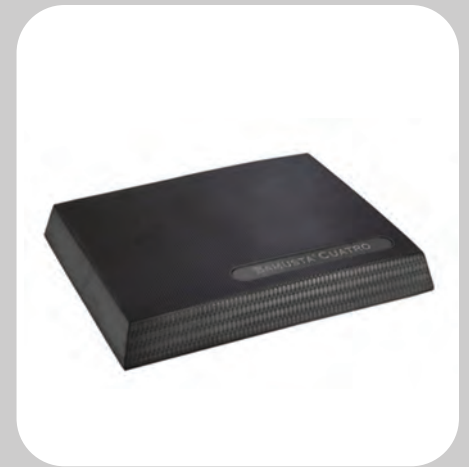
Price Breaks

Single unit = \$41.97 10 units = 1 Mastercase

2-5 Mastercases	6+ Mastercases
\$40.71	\$39.45

Warranty

Fitter's warranty will cover costs to replace or repair parts or equipment that have suffered manufacturing defects within the first year of purchase



MSRP **\$69.95**



Features

- Non-slip material for secure footing
- 2" thickness to cushion impact on joints and for use in exercise routines
- Closed-cell foam makes it hygienic and easy to clean



Benefits

- Enhances balance, coordination and agility
- Increases ankle and lower leg strength

Fitter International Inc.
3050-2600 Portland St. SE
Calgary, Alberta, Canada
T2G 4M6

p: 1.800.348.8371
f: 1.866.250.8824
w: www.fitter1.com
e: wholesale@fitter1.com

Classic
Series

August 2, 2016

