



SLIDE8 & BUMP250

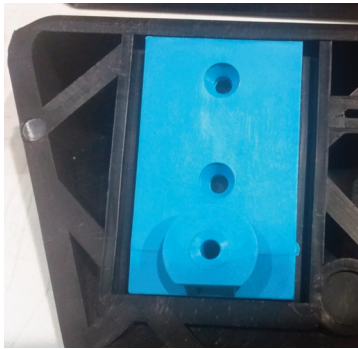
High Button Plate Replacement Instructions

Tools Needed:

Robertson Screw Bit
Screwdriver

Parts to be Reused:

Bumpers



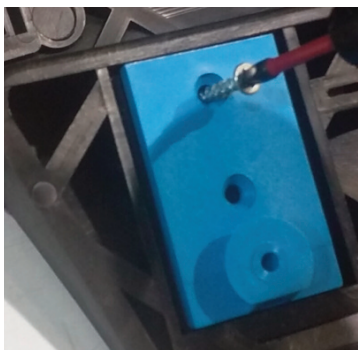
1.

Remove the damaged button plate(s) from the bumpers and place the new button plates into position as shown.



NOTE:

We recommend replacing both button plates on a bumper at the same time, for safety and consistent strength across the bumper.



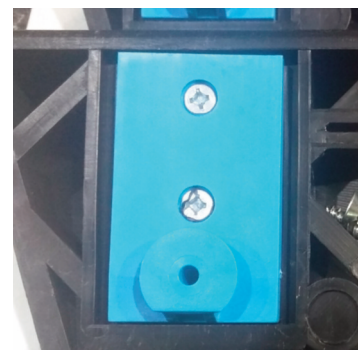
2.

New button plates come with 2 screws each. Line up the two holes on the button plate with the two holes on the bumper. Insert the top screw but do not fully tighten.



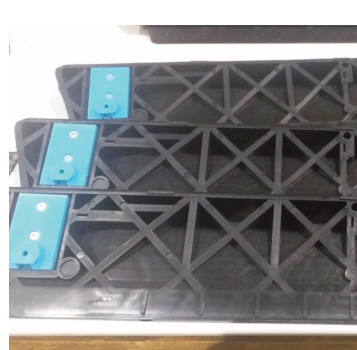
3.

Insert the bottom screw so that it is tight to the bumper.



4.

Tighten the top screw so that it is also holding firm to the bumper



5.

Your bumpers are now ready to use. To minimize wear, you can also use 2x flat-head screws to attach the bumper that goes on the non-adjustable side of the Slide Board.

Fitter International Inc.

3050 - 2600 Portland St. S.E.
Calgary, Alberta, Canada T2G 4M6

p Toll Free: 1-800-fitter-1 (800-348-8371)

f Toll Free: 1-866-250-8824

e sales@fitter1.com

www.fitter1.com