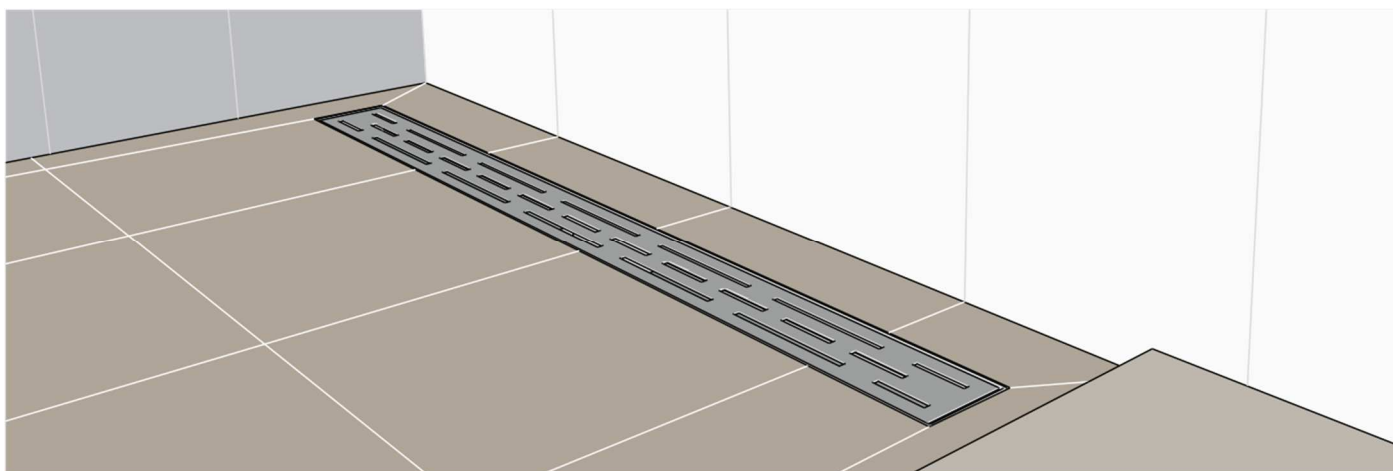
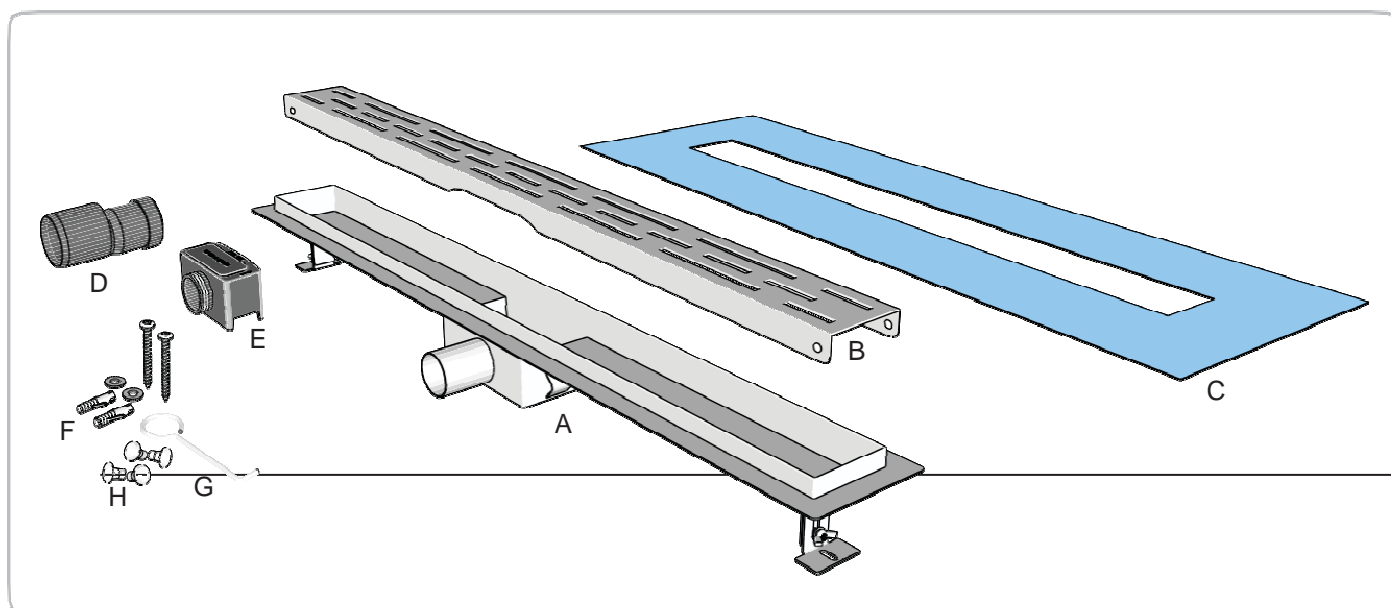


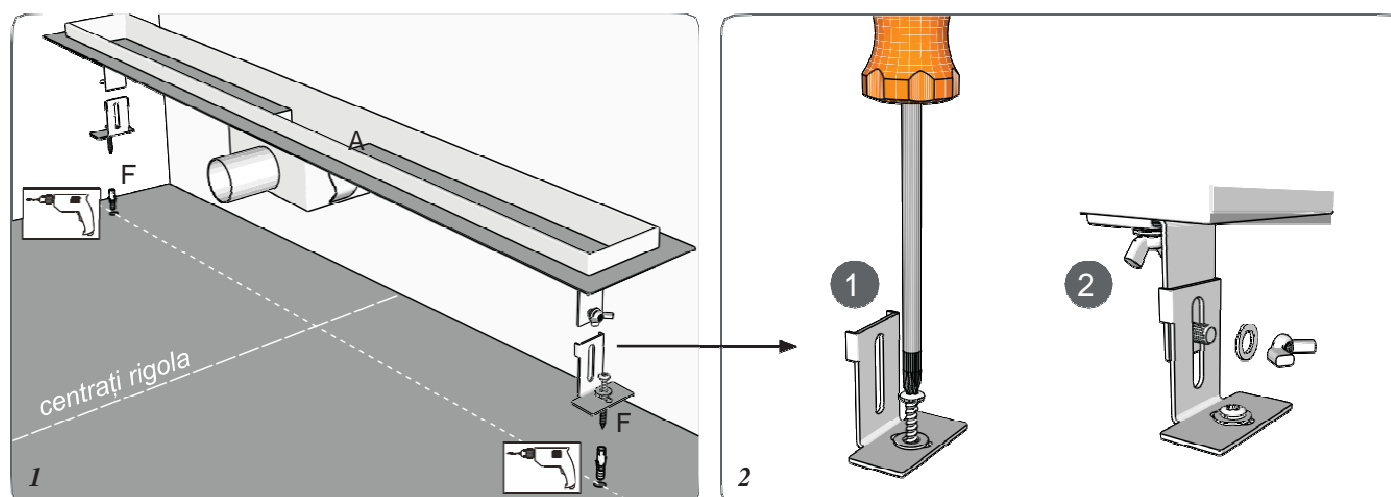
RIGOLĂ DE DUȘ

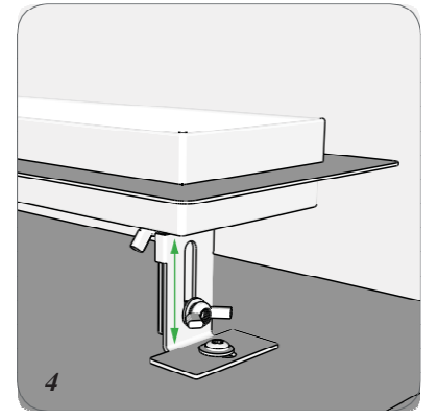
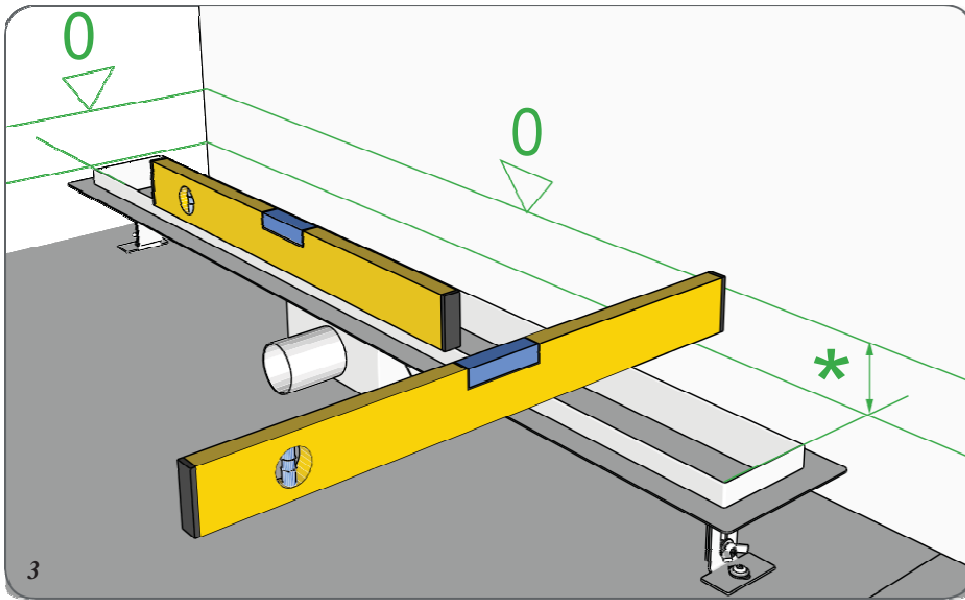


Componente

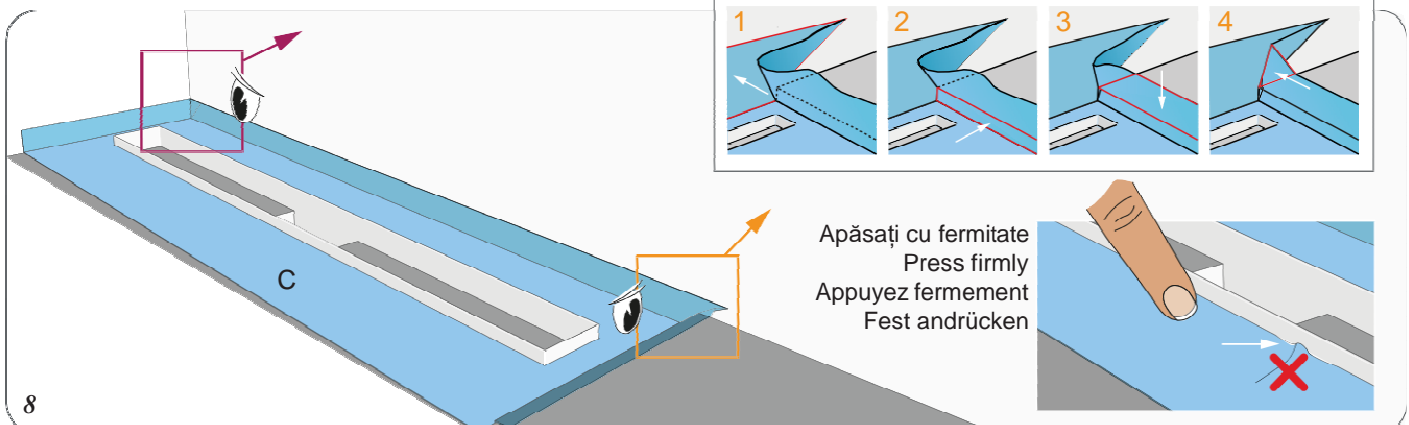
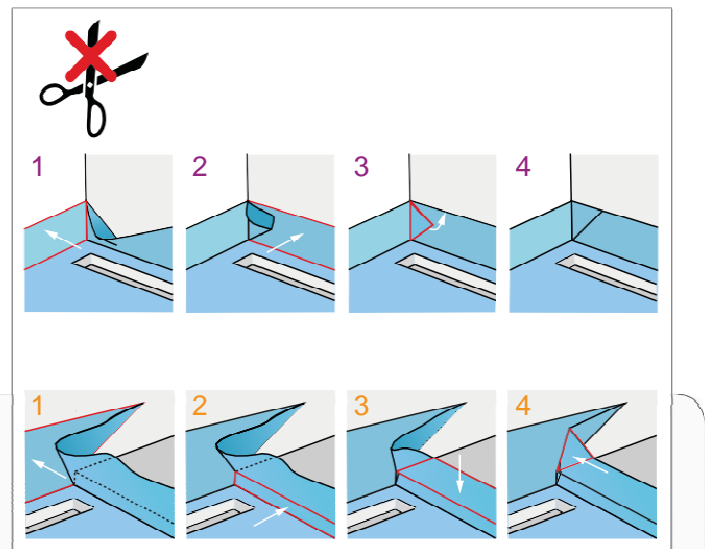
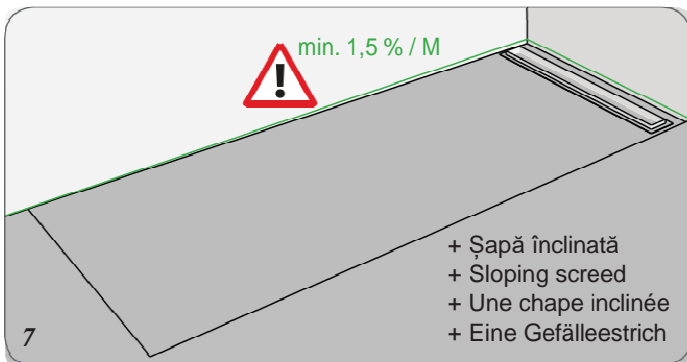
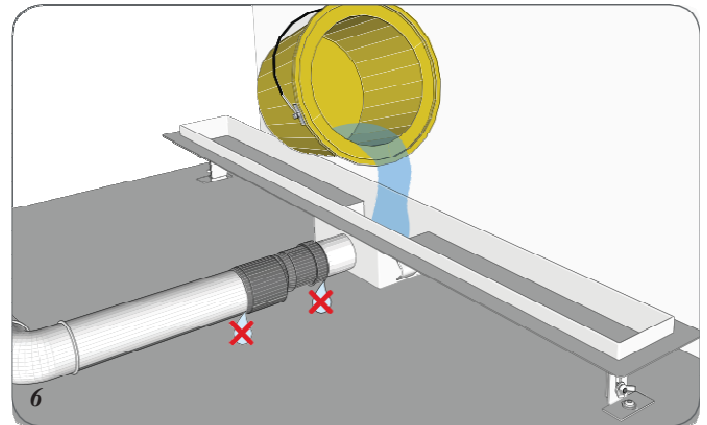
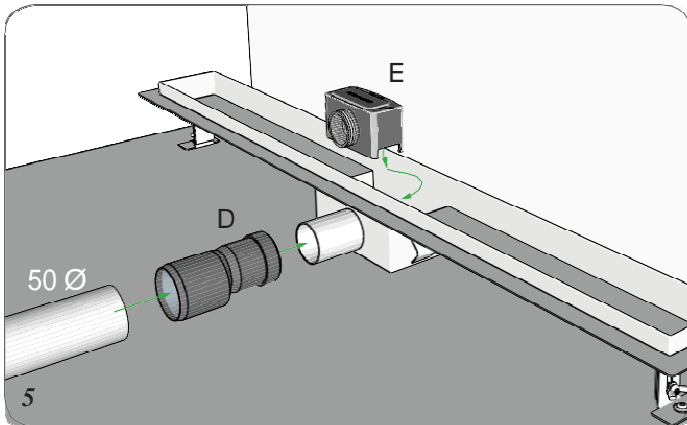


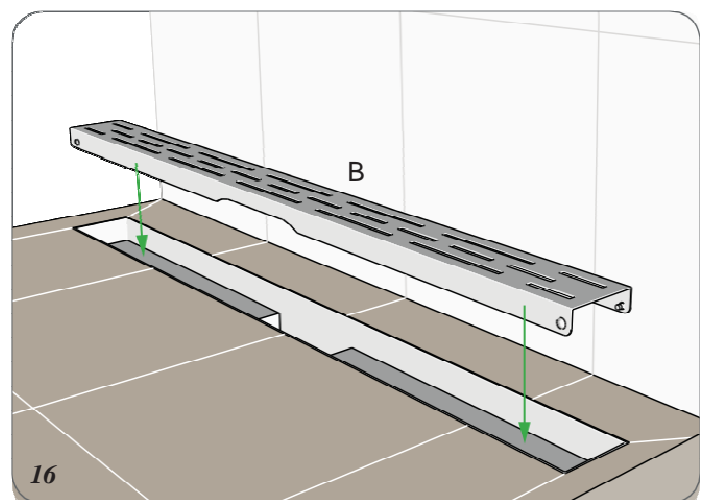
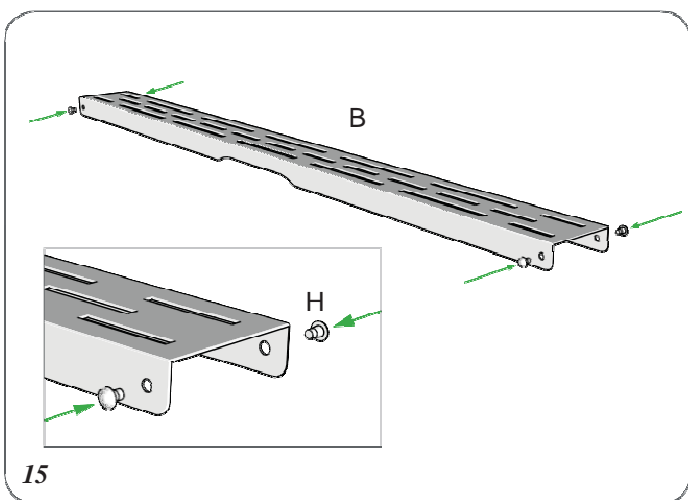
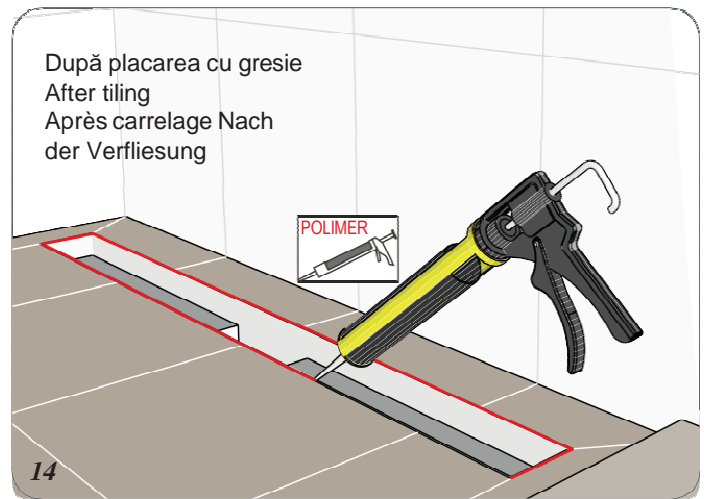
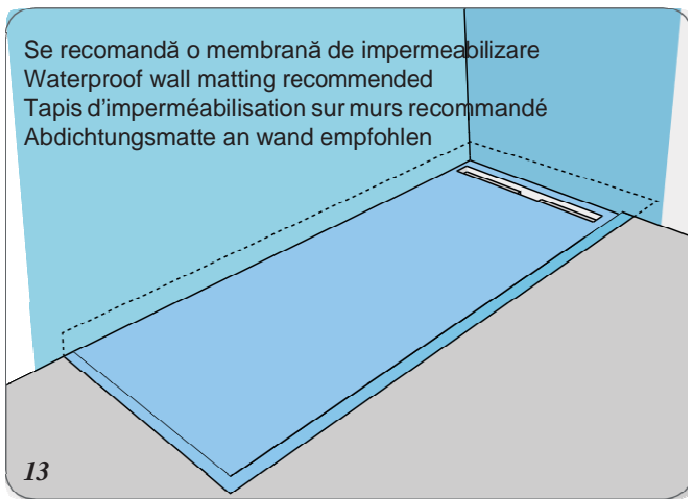
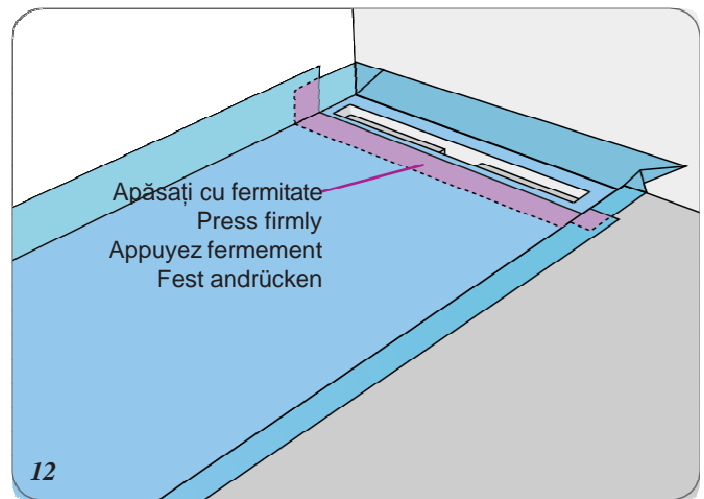
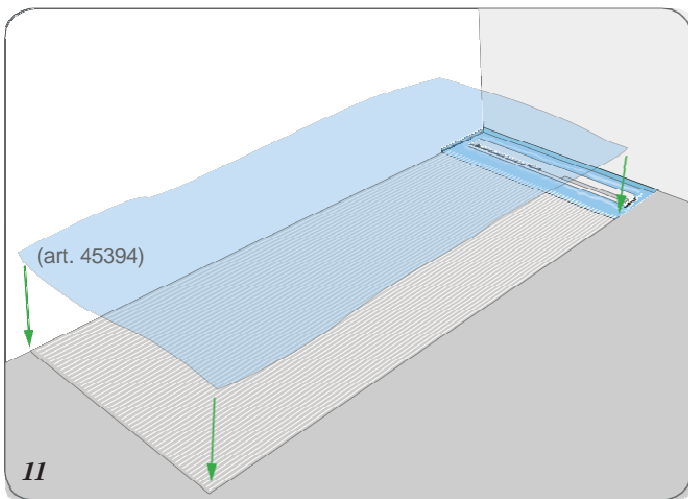
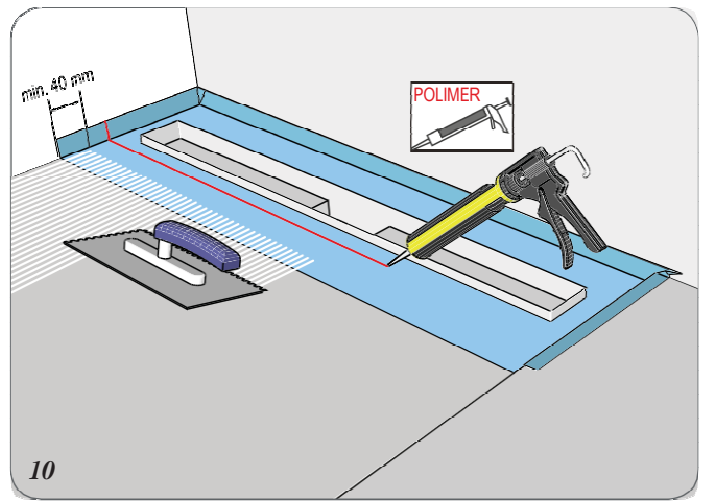
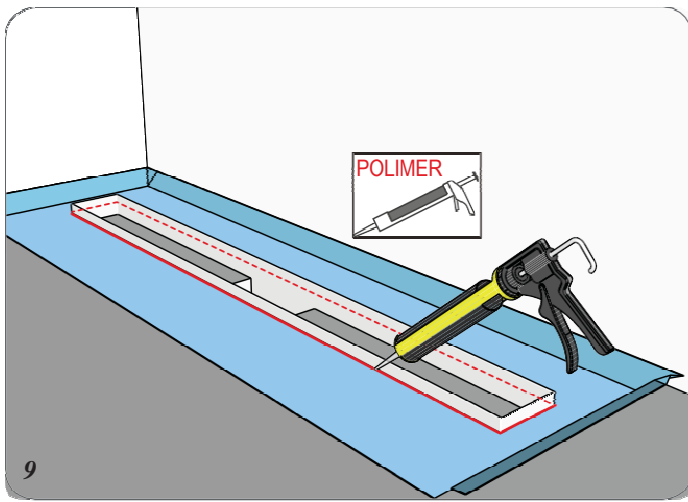
Instalare



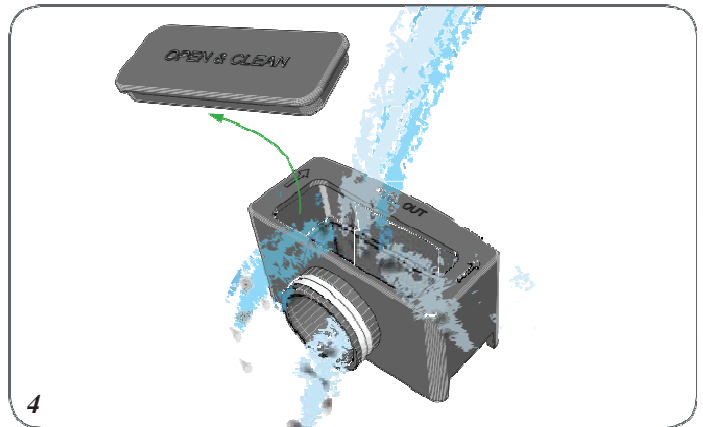
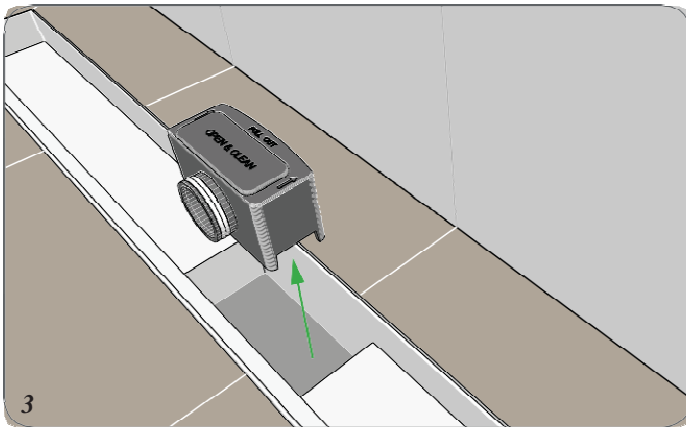
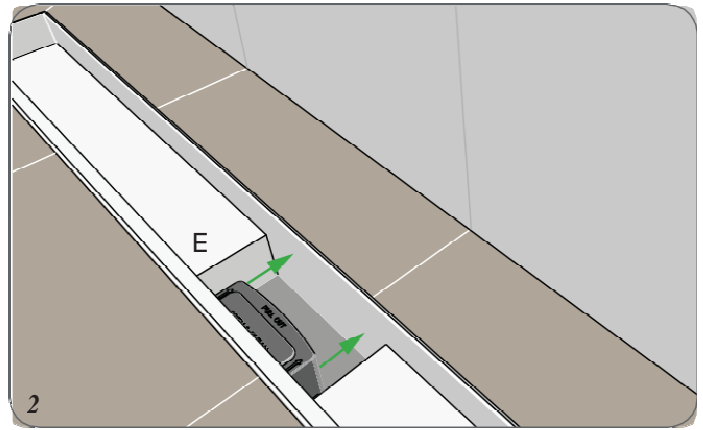
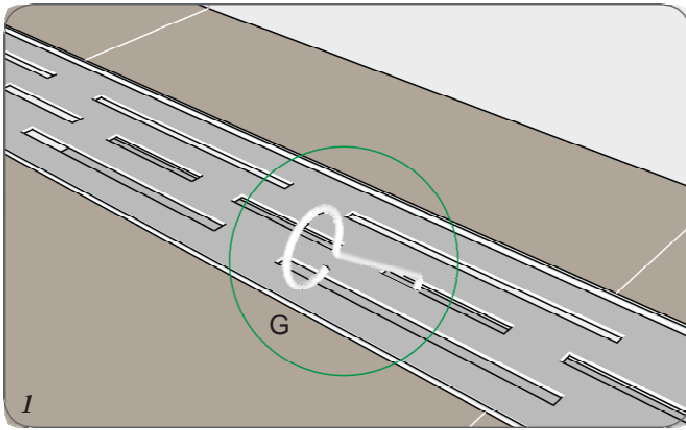


* Aduceți partea superioară la nivel cu înălțimea podelei finisate minus gradul de înclinare = min. 1,5 % pe M (lungimea rigolei).
 Level upperside with height of finished floor minus slope degree = min. 1,5 % per M (shower length)
 Placer cote supérieures égales au niveau du sol finimoinsdegrédepente=min.1,5%parM(longueurdeladouche)
 Legen Sie die Oberseite bündig mit dem Niveau des fertigen Boden minus Neigungsgrad = min. 1,5 % pro M (Dusche Länge)





Întreținere - Maintenance - Entretien - Wartung



Condiții de garanție - Warranty conditions - Conditions de garantie - Garantiebestimmungen

Dacă instalați produsul într-un mod diferit de cel din acest manual, veți anula toate garanțiile. Înainte de instalare, verificați dacă produsul îndeplinește toate cerințele dumneavoastră și dacă nu este deteriorat. Procedând la instalare, acceptați starea produsului.

If you install the product in a way that differs from this manual, this will void all guarantees. Before installation check that the product meets all your requirements and is not damaged. By proceeding with installation, you accept the condition of the product.

Si vous installez le produit d'une manière différente de celle présentée dans ce manuel, toutes les garanties seront invalidées. Contrôlez avant le placement si le produit répond à toutes vos exigences et n'est pas endommagé. En procédant au placement, vous acceptez l'état dans lequel se trouve le produit.

Wenn Sie das Produkt nicht genau nach den Angaben in dieser Montageanleitung einbauen, verfällt die Garantie. Überprüfen Sie vor dem Einbau des Produkts, ob sämtliche Voraussetzungen erfüllt sind und das Produkt nicht beschädigt ist. Sobald Sie mit der Montage beginnen, sehen Sie, in welchem Zustand sich das Produkt befindet.