

## **Marie's Rock Creek Run**

**Distance** 8 Miles (approx)

**Elevation Gain:** 2200 Feet (approx)

**Location:** Paradise, CA

**Time of Year:** March to Nov. (The upper section will be snowed under most of winter but the lower section is frequently free of snow during winter)

**Directions from Bishop:** North on 395 approx 9 miles. Turn west (left) on Gorge Road (Paradise turnoff). Drive 0.1 miles to Lower Rock Creek Road, turn right and go north approx. 2.5 miles to the old Paradise restaurant. Park on the south side of the road opposite the old restaurant.

**Description:** **This is also a mountain bike trail, so pay attention as the bicyclist frequently fly down the trail.** Cross the road and start up the dirt road. The road has a chain across it blocking vehicular access with a sign saying no trespassing except for hikers and bicyclists using the trail. The dirt road crosses Rock Creek about ¼ mile up and then turns into a trail. The trail crosses Rock Creek several times as it winds its way up 1500 feet, where it crosses Lower Rock Creek Road. There is a parking area here on the west (left) side of the road. The trail picks up again on the North side of the parking area. Follow it about 1 mile and 200 feet of elevation, at which point it crosses the Lower Rock Creek road again (there is another parking area here). You must turn right and run down the road and over the bridge about 100 feet to pick up the trail again. Follow the trail for another 2 miles and 400 feet of elevation and you'll cross Lower Rock Creek Road again and another parking area. The trail ends here, if you want to continue on to Tom's Place cross the road and scramble up the embankment and through the brush for about 200 feet until you come upon a dirt road. Turn right on the dirt road and follow it 1 mile to the Upper Rock Creek Road. Cross Upper Rock Creek Road and pick up Crowley Lake Drive (a paved road going north) it is another ¼ mile to Tom's Place. Have breakfast or lunch or return for a great downhill run.

TOPO! map printed on 02/01/07 from "Marie's\_Rock\_Creek\_Run.tpo"

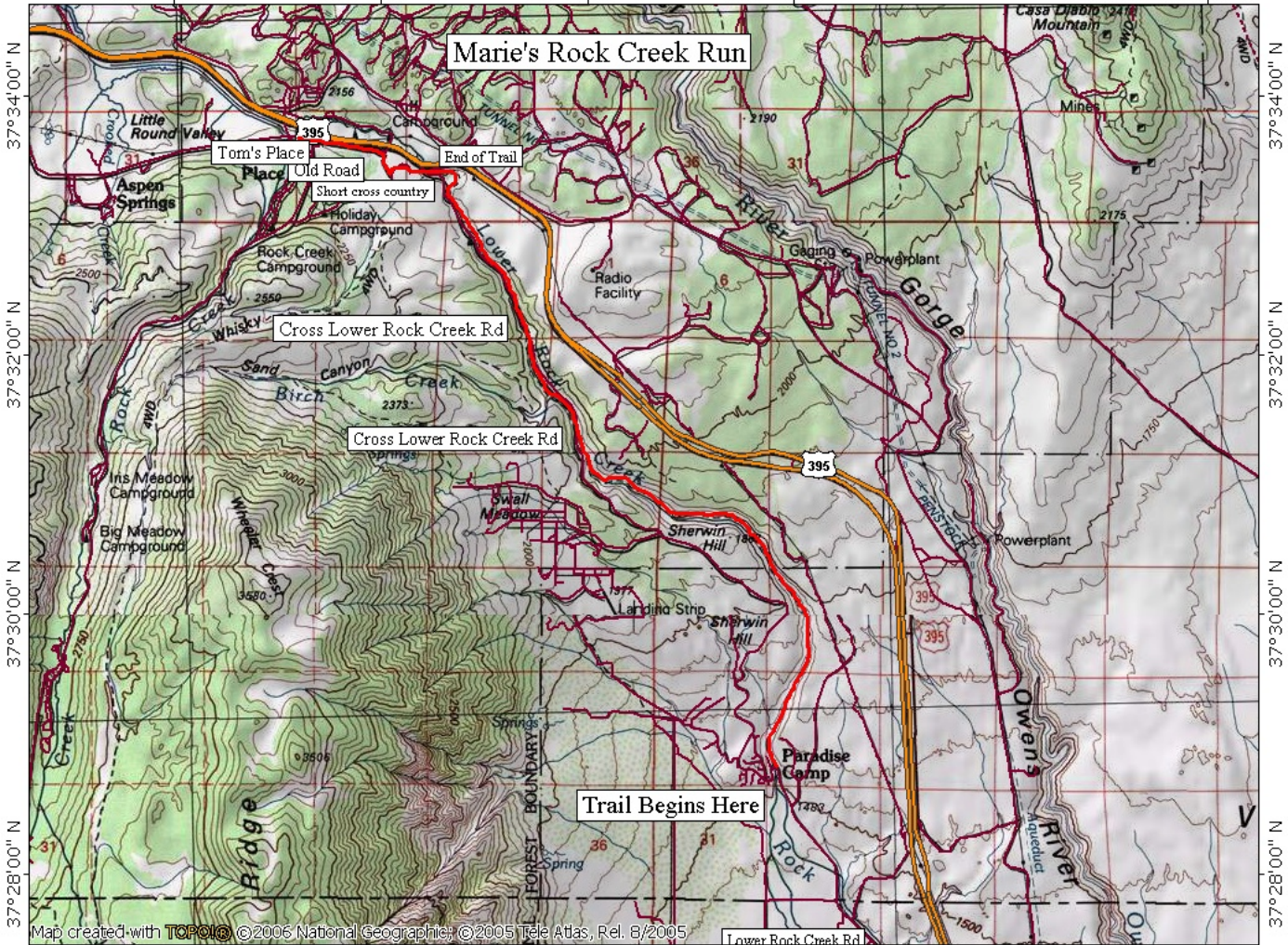
118°42'00" W

118°40'00" W

118°38'00" W

118°36'00" W

WGS84 118°32'00" W



37°34'00" N  
37°32'00" N  
37°30'00" N  
37°28'00" N

37°34'00" N  
37°32'00" N  
37°30'00" N  
37°28'00" N

Map created with **TOPO!** ©2006 National Geographic; ©2005 Tele Atlas, Rel. 8/2005

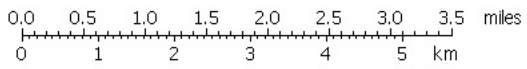
118°42'00" W

118°40'00" W

118°38'00" W

118°36'00" W

WGS84 118°32'00" W



02/01/07