

Deer Mtn Loop

Distance: 5 mi

Elevation Gain/Loss: 400 ascent / 400descent on a rolling course

Location: Adjacent to Mammoth Lakes Airport, CA

Time Of Year: April to Nov

Directions From Bishop: Take Highway 395 north about 40 miles to the Mammoth Lakes/Yosemite Airport turnoff, turn right here; in a couple hundred yards you'll see a sign to turn right for the airport, continue passed this for an additional 50 yards and turn right on the Hot Creek road; drive approximately 1 mile to a "T" intersection and turn right; about 1/4 you'll find a road turning left up into Deer Mt.; start here.

Route Description: Describing this route is almost impossible, as there are numerous forking dirt roads that don't show on any map. Generally, stay to the left but within the forest. If you get off track, head in a westerly direction towards the airport and you'll run into the Hot Creek road sooner or later. We recommend that you go with the flow, explore and don't be surprised if you run a mile or two longer than expected.

Odds & Ends:

- 1) No water up here.
- 2) This area is popular with the Striders in April and May.

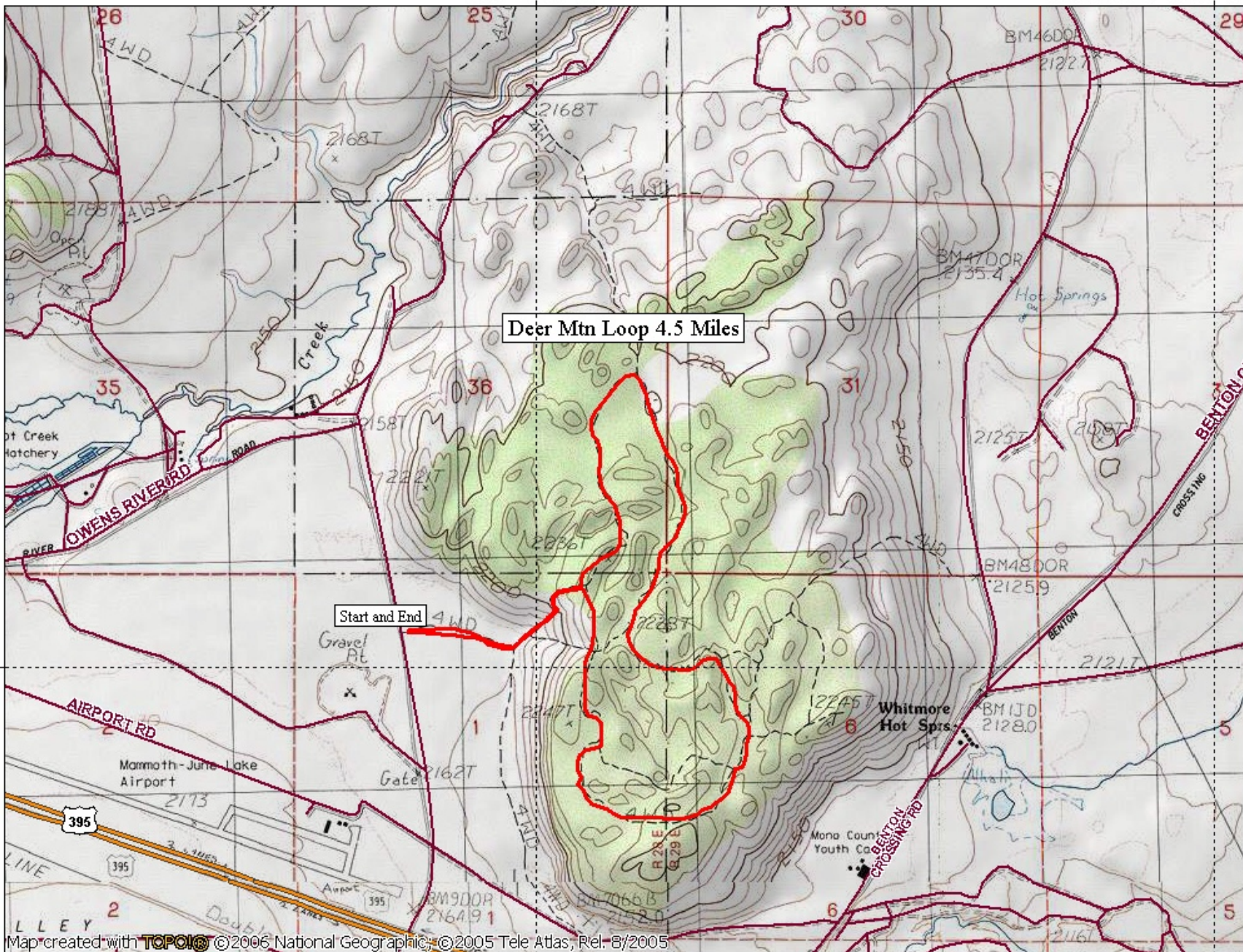
TOPO! map printed on 02/01/07 from "Deer Mtn Loop.tpo"

118°50'00" W

WGS84 118°48'00" W

37°38'00" N

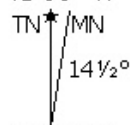
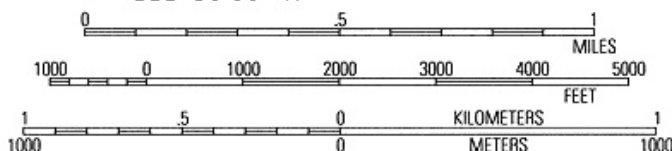
37°38'00" N



Map created with TOPO! © 2006 National Geographic; © 2005 Tele Atlas, Rel. 8/2005

118°50'00" W

WGS84 118°48'00" W



02/01/07