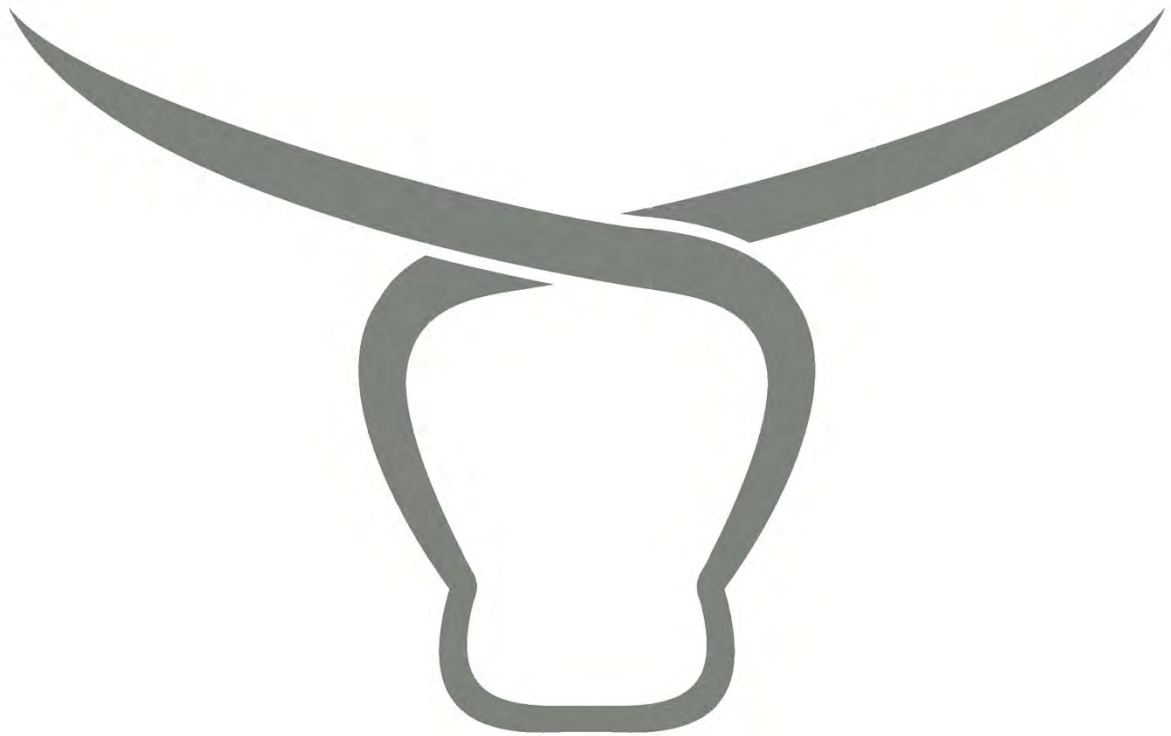


Livestock Scales Aluminium Platform Construction Guide



Aluminium Platform

This is our recommended platform construction as the total weight of the platform is less than 35kg for 2000mm x 700mm.

An Aluminium platform can be quickly built by your local fabrication / engineering company with the following guidance :

Aluminium materials required (marine grade) :

50 x 50 x 5mm Angle (platform sides)

50mm RHS (centre rib support),

6mm aluminium tread plate and sheets

4 x 15mm x 200mm x 60mm plates for the load cells (drilled and tapped) – scales kit

Take the measurements for the platform size you need along with the images below and a local welder will be able to build you a light weight, low profile super strong Aluminium platform in no time.

This is the recommended construction as the platform is lightweight and can support the max weight requirements for general livestock weighing.

Lightweight, Low Profile, Heavy Duty - Aluminium Platform



50mm Angle, 50mm RHS, 15mm Plate with 6mm Tread Plate
Less than 35 kg total weight

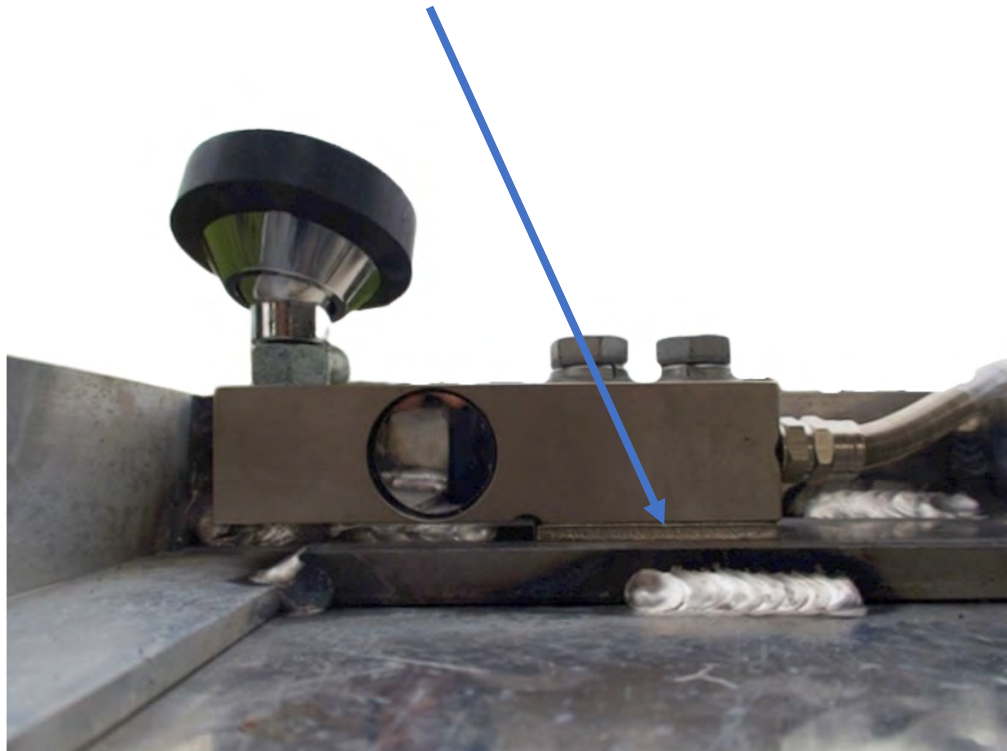
Platform Design for Scales Kit (4 independent feet)



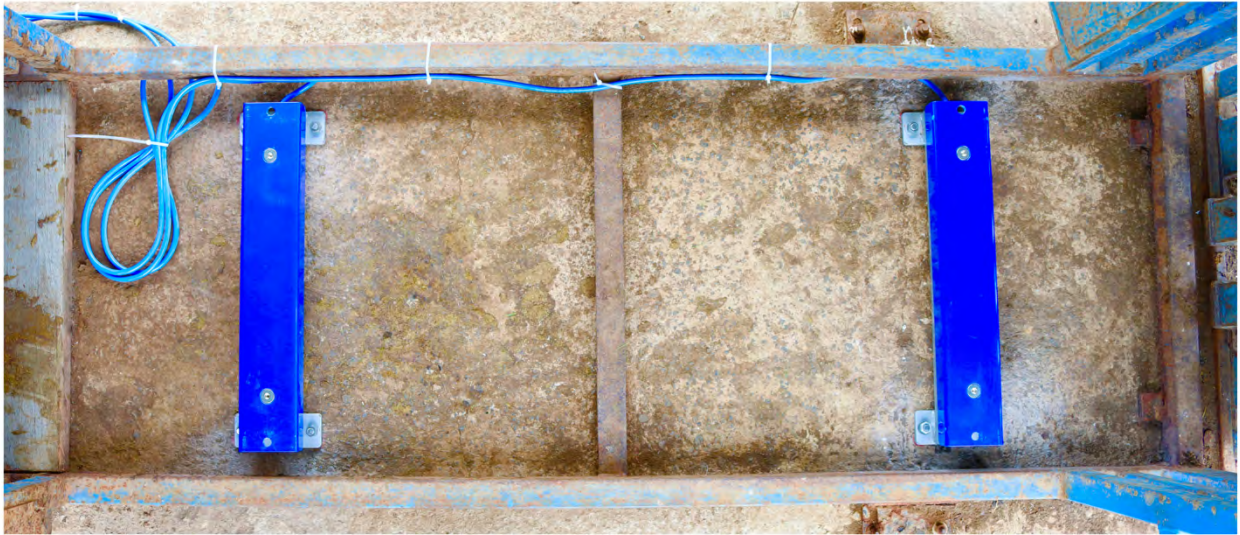
4 x 15mm x 200mm x 60mm plates for the load cells (drilled and tapped)



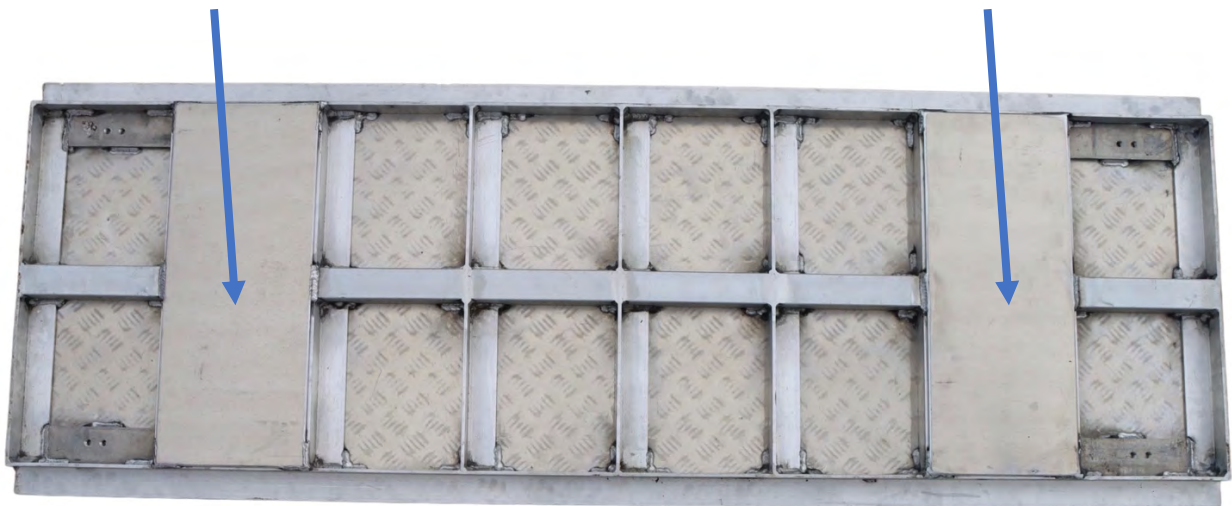
Add the provided spacer and then simply bolt on the 4 load cells with feet and calibrate



Preparation for Platform Installation (load bars)



Add 2 x Aluminium Plates (6mm) for Load Bars



Drill holes here in the plates and bolt the platform onto the load bars

