

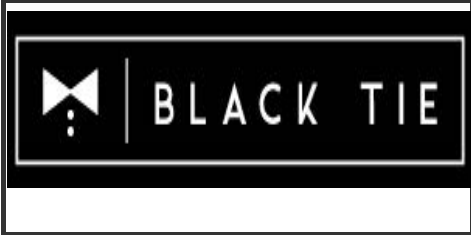


ORELAP Cert No. 4092-002
OLCC No. 1002158CD2E

Marihuana Potency Analysis by
High Performance Liquid Chromatography

Testing Accreditation #: 4092-002

Test Certificate #: 108395-001



Test Conditions
 Scale: XS205-OR1
 Temp: 21.1 °C
 Baro Pressure: 1004 hPa
 Analyst: HRM
 Technician: EDT

Sample ID#: 108395
 Batch #: 108395
 Process Date: 06/20/2018
 Serving Size (g): 1
 Date Received: 06/20/2018
 Test Date: 06/25/2018
 Valid Through: 06/25/2019



Test Compounds	CBDV	CBDA	CBD	CBC	CBG	CBN	THC	THCA	THCV		Calc. Avg
Avg. Amount	0.73 mg/g	N/D	1,004.66 mg/g	N/D	N/D	N/D	N/D	N/D	N/D	CBD	1,004.66 mg/g
LOQ	0.05 mg/g	0.05 mg/g	0.05 mg/g	0.05 mg/g	0.05 mg/g	0.05 mg/g	0.05 mg/g	0.05 mg/g	0.05 mg/g	THC	0.00 mg/g
Amount per Serving~	0.73 mg/srv	N/D	1.00 mg/srv	N/D	N/D	N/D	N/D	N/D	N/D	Serving Size~ (g):	1.00 g
Uncertainty	±5% RPD	±5% RPD	±5% RPD	±5% RPD	±5% RPD	±5% RPD	±5% RPD	±5% RPD	±5% RPD		

Sample tested at greater than 99% cannabinoids
 Serving Size = 1 gram

LOQ = Limit of Quantitation

RPD is relative percent difference between the LCS and LCS duplicate.

%RPD = Relative Percent Difference; Min. Value = Minimum Detectable Amount, CFU = Colony Forming Units, N/D = Not Detected

*** Designated tests that use the method FE-45.

Total CBD or THC is the calculated sum of CBD or THC and the amount of CBD or THC derived from CBDA or THCA, respectively. These values are calculated by adding a molar correction factor of 0.877 to the CBDA or THCA value.

Calc. Avg. is the calculated average of total CBD or total THC for all increments tested.

This sample has not been tested according to OAR 333-007. These results should therefore be used for research and development or quality control purposes only.

This certificate shall not be reproduced except in full, without written approval of Iron Laboratories, LLC.

Joseph Rutkowski, Quality Manager



Himashi Mead, Technical Manager

Iron Labs Oregon complies with 2009 TNI Environmental Laboratory Standards.

Tested by Iron Laboratories Oregon, 71 Centennial Loop Suite D Eugene, OR 97401