

Black Tie CBD

PO Box 1949
Myrtle Creek, OR 97457
support@blacktiecbd.net
(888) 702-2285
Lic. #

Sample: 1904CH0097.0480

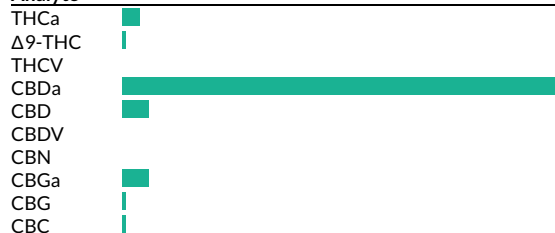
Strain: Grapefruit
Batch#: ; Batch Size: g
Sample Received: 04/08/2019; Report Created: 04/17/2019; Expires: 04/17/2020
Harvest/Production Date:
Sampling: Random; Environment: Room Temp

Grapefruit

Plant, Flower - Cured, Indoor
Harvest Process Lot: ; METRC Batch: ; METRC Sample:



Analyte

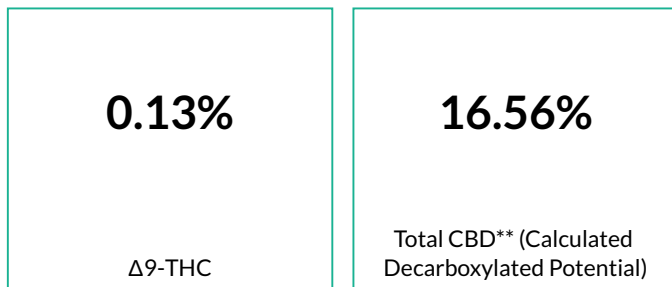


Cannabinoids

288 HPLC4 20190409-6
04/09/2019

1 Serving = , g
servings/container,

Pass



Analyte	LOQ	Mass	
	mg/g	%	mg/g
THCa	0.2	0.70	7.0
Δ9-THC	0.2	0.13	1.3
THCV	0.2	<LOQ	<LOQ
CBDa	0.2	17.69	176.9
CBD	0.2	1.04	10.4
CBDV	0.2	<LOQ	<LOQ
CBN	0.2	<LOQ	<LOQ
CBGa	0.2	1.05	10.5
CBG	0.2	0.12	1.2
CBC	0.2	0.11	1.1
Total		20.85	208.5

Method: CH SOP 400
*Total THC = THCa * 0.877 + d9-THC. **Total CBD = CBDa * 0.877 + CBD. LOQ = Limit of Quantification; NR = Not Reported; ND = Not Detected

Black Tie CBD

PO Box 1949
Myrtle Creek, OR 97457
support@blacktiecbd.net
(888) 702-2285
Lic. #

Sample: 1904CH0097.0480

Strain: Grapefruit
Batch#: ; Batch Size: g
Sample Received: 04/08/2019; Report Created: 04/17/2019; Expires: 04/17/2020
Harvest/Production Date:
Sampling: Random; Environment: Room Temp

Grapefruit

Plant, Flower - Cured, Indoor
Harvest Process Lot: ; METRC Batch: ; METRC Sample:



Terpenes

462 GCFID1 20190410-1
04/10/2019

Analyte	Mass %	Mass mg/g	LOQ %		Analyte	Mass %	Mass mg/g	LOQ %	
α-Pinene	0.12	1.2	0.03	<div style="width: 20px; height: 10px; background-color: #008000;"></div>	Terpinolene	<LOQ	<LOQ	0.03	
Camphene	<LOQ	<LOQ	0.03		Linalool	<LOQ	<LOQ	0.03	
(-) -β-Pinene	0.05	0.5	0.03	<div style="width: 10px; height: 10px; background-color: #008000;"></div>	(-) -Isopulegol	<LOQ	<LOQ	0.03	
β-Myrcene	0.34	3.4	0.03	<div style="width: 40px; height: 10px; background-color: #008000;"></div>	Geraniol	<LOQ	<LOQ	0.03	
δ-3-Carene	<LOQ	<LOQ	0.03		β-Caryophyllene	0.15	1.5	0.03	<div style="width: 20px; height: 10px; background-color: #008000;"></div>
α-Terpinene	<LOQ	<LOQ	0.03		α-Humulene	0.08	0.8	0.03	<div style="width: 15px; height: 10px; background-color: #008000;"></div>
δ-Limonene	0.06	0.6	0.03	<div style="width: 15px; height: 10px; background-color: #008000;"></div>	β-Nerolidol	0.11	1.1	0.03	<div style="width: 20px; height: 10px; background-color: #008000;"></div>
Ocimene 1	<LOQ	<LOQ	0.03		(-) -Guaiol	0.05	0.5	0.03	<div style="width: 10px; height: 10px; background-color: #008000;"></div>
p-Isopropyltoluene	<LOQ	<LOQ	0.03		(-) -α-Bisabolol	0.13	1.3	0.03	<div style="width: 20px; height: 10px; background-color: #008000;"></div>
γ-Terpinene	<LOQ	<LOQ	0.03						

Primary Aromas



Method: GC-FID CH SOP 401; based on dry weight; LOQ = Limit of Quantification; NR = Not Reported; ND = Not Detected

Black Tie CBD

PO Box 1949
Myrtle Creek, OR 97457
support@blacktiecbd.net
(888) 702-2285
Lic. #

Sample: 1904CH0097.0480

Strain: Grapefruit
Batch#: ; Batch Size: g
Sample Received: 04/08/2019; Report Created: 04/17/2019; Expires: 04/17/2020
Harvest/Production Date:
Sampling: Random; Environment: Room Temp

Grapefruit

Plant, Flower - Cured, Indoor
Harvest Process Lot: ; METRC Batch: ; METRC Sample:



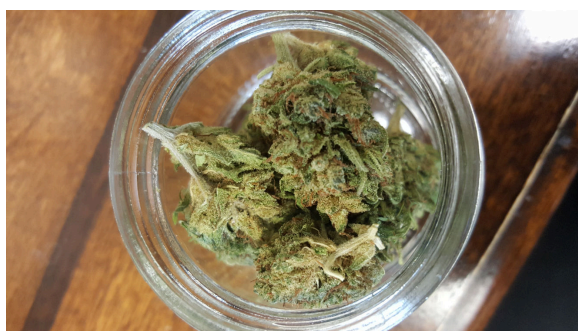
Moisture

Pass

04/09/2019

9.4%

Moisture



Black Tie CBD

PO Box 1949
Myrtle Creek, OR 97457
support@blacktiecbd.net
(888) 702-2285
Lic. #

Sample: 1904CH0097.0480

Strain: Grapefruit
Batch#: ; Batch Size: g
Sample Received: 04/08/2019; Report Created: 04/17/2019; Expires: 04/17/2020
Harvest/Production Date:
Sampling: Random; Environment: Room Temp

Grapefruit

Plant, Flower - Cured, Indoor
Harvest Process Lot: ; METRC Batch: ; METRC Sample:



Quality Control Data

Analytical Batch ID	QC Sample ID	Assay Name	QC Category Name
288 HPLC4 20190409-6	PMB04081902F	Cannabinoids	Blank

QC Notes

None

Compounds	Blank Result	Blank Max % (LOQ)	Blank Result %	Notes
THCa	0	0.05	<LOQ	-
Δ9-THC	0	0.05	<LOQ	-
CBDa	0	0.05	<LOQ	-
CBD	0	0.05	<LOQ	-



Black Tie CBD

PO Box 1949
Myrtle Creek, OR 97457
support@blacktiecbd.net
(888) 702-2285
Lic. #

Sample: 1904CH0097.0480

Strain: Grapefruit
Batch#: ; Batch Size: g
Sample Received: 04/08/2019; Report Created: 04/17/2019; Expires: 04/17/2020
Harvest/Production Date:
Sampling: Random; Environment: Room Temp

Grapefruit

Plant, Flower - Cured, Indoor
Harvest Process Lot: ; METRC Batch: ; METRC Sample:



Quality Control Data

Analytical Batch ID	QC Sample ID	Assay Name	QC Category Name
288 HPLC4 20190409-6	PLCS04081902F	Cannabinoids	Lab Control Sample

QC Notes

None

Compounds	LCS Result (%)	LCS Spike	LCS % Rec	% Limits	Notes
THCa	4.77	4.45	107.19	70 - 130	-
Δ9-THC	3.27	3.47	94.24	70 - 130	-
CBDa	6.02	5.69	105.8	70 - 130	-
CBD	3.99	3.55	112.39	57 - 143	-

Black Tie CBD

PO Box 1949
Myrtle Creek, OR 97457
support@blacktiecbd.net
(888) 702-2285
Lic. #

Sample: 1904CH0097.0480

Strain: Grapefruit
Batch#: ; Batch Size: g
Sample Received: 04/08/2019; Report Created: 04/17/2019; Expires: 04/17/2020
Harvest/Production Date:
Sampling: Random; Environment: Room Temp

Grapefruit

Plant, Flower - Cured, Indoor
Harvest Process Lot: ; METRC Batch: ; METRC Sample:



Quality Control Data

Analytical Batch ID	QC Sample ID	Assay Name	QC Category Name
288 HPLC4 20190409-6	PMS04081902F	Cannabinoids	Spike

QC Notes

None

Compounds	LOQ	Matrix Duplicate % RPD	Duplicate RPD Notes	Matrix Spike % Rec	% Limits	Notes
THCa	0.02	3.65	<20	162	70 - 130	Above Limit Range
Δ9-THC	0.02	3.45	<20	104	70 - 130	-
CBDa	0.02	10.53	<20	103	70 - 130	-
CBD	0.02	<LOQ	<LOQ	102	70 - 130	-