



Certificate of Analysis

Industrial Hemp

Powered by Confident Cannabis
1 of 1

Black Tie CBD

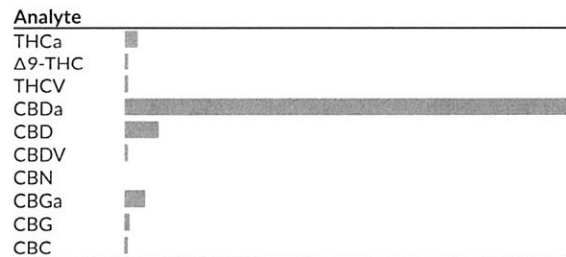
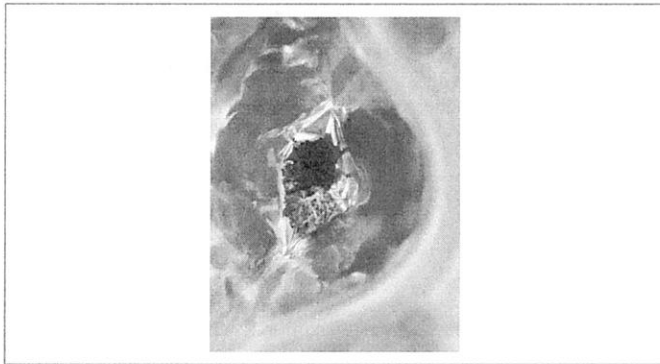
PO Box 1949
Myrtle Creek, OR 97457
support@blacktiecbd.net
(888) 702-2285
Lic. #

Sample: 1909CH0721.2538

Strain: Chem Dawg CBD2
Batch#: ; Batch Size: g
Sample Received: 09/23/2019; Report Created: 10/03/2019; Expires: 10/03/2020
Harvest/Production Date:
Sampling: Random; Environment: Room Temp

Chem Dawg CBD2

Plant, Flower - Cured
Harvest Process Lot: ; METRC Batch: ; METRC Sample:



Cannabinoids

544 HPLC3 20191002-4
10/02/2019

1 Serving = , g
servings/container,

Pass

0.19% Δ9-THC	19.21% Total CBD** (Calculated Decarboxylated Potential)
23.93% Total Cannabinoids Analyzed	8.5% Moisture

Analyte	LOQ mg/g	Mass %	Mass mg/g
THCa		0.64	6.4
Δ9-THC		0.19	1.9
THCV		0.02	0.2
CBDa		20.16	201.6
CBD		1.53	15.3
CBDV		0.05	0.5
CBN		<LOQ	<LOQ
CBGa		0.96	9.6
CBG		0.25	2.5
CBC		0.15	1.5
Total		23.93	239.3

Method: CH SOP 400
*Total THC = THCa * 0.877 + d9-THC. **Total CBD = CBDa * 0.877 + CBD. LOQ = Limit of Quantification; NR = Not Reported; ND = Not Detected



5691 SE International Way B
Portland, OR
(503) 305-5252
http://chemhistory.com
Lic# OLCC 010-1002015CA5E ORELAP 4057

Douglas Duncan
Laboratory Director

Confident Cannabis
All Rights Reserved
support@confidentcannabis.com
(866) 506-5866
www.confidentcannabis.com



Values reported relate only to the product tested. ChemHistory makes no claims as to the consumer safety or other risks associated with any detected or non-detected levels of any pesticides or residual solvents. This Certificate shall not be reproduced except in full, without the written approval of ChemHistory. ORELAP accredited ID#4057 and OLCC Licensed Cannabis Testing Laboratory #010-1002015CA5E.



Certificate of Analysis

Sample provided to the laboratory by the client and tested as received.

Powered by Confident Cannabis
2 of 3

Black Tie CBD

PO Box 1949
Myrtle Creek, OR 97457
support@blacktiecbd.net
(888) 702-2285
Lic. #

Sample: 1909CH0721.2531

Strain: Chem Dawg CBD
Batch#: ; Batch Size: g
Sample Received: 09/23/2019; Report Created: 10/03/2019; Expires: 10/03/2020
Harvest/Production Date:
Sampling: Random; Environment: Room Temp

Chem Dawg CBD

Plant, Flower - Cured
Harvest Process Lot: ; METRC Batch: ; METRC Sample:



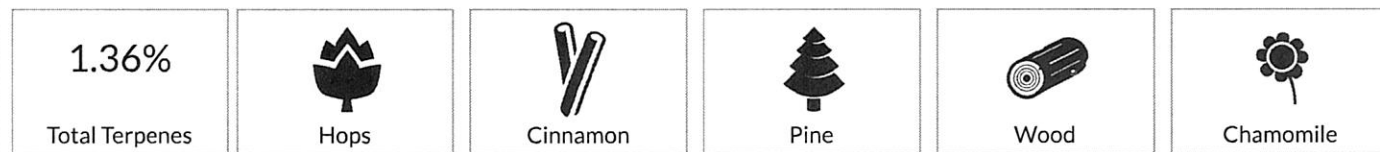
Terpenes

559 GC/FID1 20191002-1
10/02/2019

Analyte	Mass %	Mass mg/g	LOQ %
cis-Phytol	<LOQ	<LOQ	0.02
Valencene	0.03	0.3	0.02
Sabinene	<LOQ	<LOQ	0.02
Ocimene 1	<LOQ	<LOQ	0.02
Geraniol	<LOQ	<LOQ	0.02
Neral	<LOQ	<LOQ	0.02
α-Humulene	0.11	1.1	0.02
α-Terpinene	<LOQ	<LOQ	0.02
trans-Phytol	0.11	1.1	0.02
Caryophyllene Oxide	0.05	0.5	0.02
(-) -β-Pinene	0.04	0.4	0.02
α-Pinene	0.12	1.2	0.02
Camphor	<LOQ	<LOQ	0.02
(-) -α-Bisabolol	0.11	1.1	0.02
α-Cedrene	<LOQ	<LOQ	0.02
Terpinolene	<LOQ	<LOQ	0.02
Endo-Fenchyl Alcohol	<LOQ	<LOQ	0.02
p-Isopropyltoluene	<LOQ	<LOQ	0.02
Azulene	<LOQ	<LOQ	0.02
α-Terpineol	<LOQ	<LOQ	0.02
Cedrol	0.11	1.1	0.02
Citral	<LOQ	<LOQ	0.02
(-) -Guaiol	<LOQ	<LOQ	0.02
β-Nerolidol	0.10	1.0	0.02
Linalool	<LOQ	<LOQ	0.02
Neryl Acetate	<LOQ	<LOQ	0.02

Analyte	Mass %	Mass mg/g	LOQ %
β-Myrcene	0.23	2.3	0.02
γ-Terpinene	<LOQ	<LOQ	0.02
Anisole	<LOQ	<LOQ	0.02
Fenchone	<LOQ	<LOQ	0.07
Isoborneol	<LOQ	<LOQ	0.02
δ-Limonene	0.04	0.4	0.02
Ocimene 2	0.03	0.3	0.02
Camphene	<LOQ	<LOQ	0.02
α-Phellandrene	<LOQ	<LOQ	0.02
γ-Terpineol	<LOQ	<LOQ	0.04
Geranyl Acetate	<LOQ	<LOQ	0.18
β-Caryophyllene	0.19	1.9	0.02
Sabinene Hydrate	<LOQ	<LOQ	0.02
Farnesene	0.03	0.3	0.02
Nerol	<LOQ	<LOQ	0.02
trans-Nerolidol	0.04	0.4	0.02
Borneol	<LOQ	<LOQ	0.02
Hexahydro Thymol	<LOQ	<LOQ	0.02
Squalene	0.02	0.2	0.02
δ-3-Carene	<LOQ	<LOQ	0.02
Eucalyptol	<LOQ	<LOQ	0.02
Eugenol	<LOQ	<LOQ	0.02
(-) -Isopulegol	<LOQ	<LOQ	0.02
Pulegone	<LOQ	<LOQ	0.02
cis-Nerolidol	<LOQ	<LOQ	0.02

Primary Aromas



Method: GC-FID CH SOP 401; based on dry weight; LOQ = Limit of Quantification; NR = Not Reported; ND = Not Detected



5691 SE International Way B
Portland, OR
(503) 305-5252
http://chemhistory.com
Lic# OLCC 010-1002015CA5E ORELAP 4057

Douglas Duncan

Douglas Duncan
Laboratory Director

Confident Cannabis
All Rights Reserved
support@confidentcannabis.com
(866) 506-5866
www.confidentcannabis.com



Values reported relate only to the product tested. ChemHistory makes no claims as to the consumer safety or other risks associated with any detected or non-detected levels of any pesticides or residual solvents. This Certificate shall not be reproduced except in full, without the written approval of ChemHistory. ORELAP accredited ID#4057 and OLCC Licensed Cannabis Testing Laboratory #010-1002015CA5E.



Certificate of Analysis

Sample provided to the laboratory by the client and tested as received.

Powered by Confident Cannabis
3 of 3

Black Tie CBD

PO Box 1949
Myrtle Creek, OR 97457
support@blacktiecbd.net
(888) 702-2285
Lic. #

Sample: 1909CH0721.2531

Strain: Chem Dawg CBD
Batch#: ; Batch Size: g
Sample Received: 09/23/2019; Report Created: 10/03/2019; Expires: 10/03/2020
Harvest/Production Date:
Sampling: Random; Environment: Room Temp

Chem Dawg CBD

Plant, Flower - Cured
Harvest Process Lot: ; METRC Batch: ; METRC Sample:

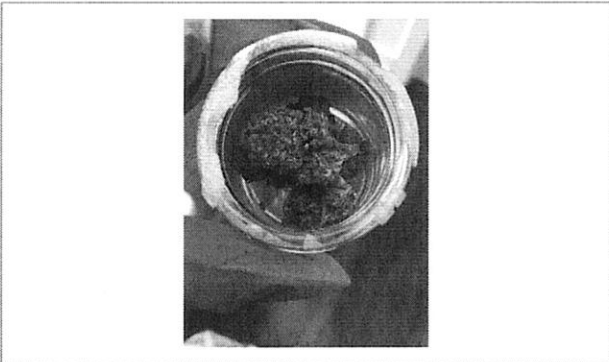


Moisture

Pass

10/02/2019

8.5%
Moisture



5691 SE International Way B
Portland, OR
(503) 305-5252
<http://chemhistory.com>
Lic# OLCC 010-1002015CA5E ORELAP 4057

Douglas Duncan
Laboratory Director

Confident Cannabis
All Rights Reserved
support@confidentcannabis.com
(866) 506-5866
www.confidentcannabis.com



Values reported relate only to the product tested. ChemHistory makes no claims as to the consumer safety or other risks associated with any detected or non-detected levels of any pesticides or residual solvents. This Certificate shall not be reproduced except in full, without the written approval of ChemHistory. ORELAP accredited ID#4057 and OLCC Licensed Cannabis Testing Laboratory #010-1002015CA5E.