



# Certificate of Analysis

## Industrial Hemp

Powered by Confident Cannabis  
1 of 3

### Black Tie CBD

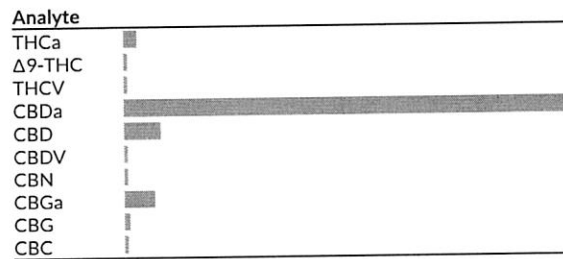
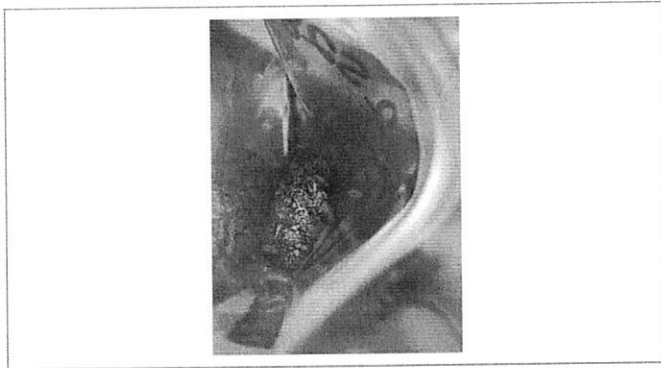
PO Box 1949  
Myrtle Creek, OR 97457  
support@blacktiecbd.net  
(888) 702-2285  
Lic. #

Sample: 1909CH0721.2528

Strain: Bubblegum  
Batch#: ; Batch Size: g  
Sample Received: 09/23/2019; Report Created: 10/03/2019; Expires: 10/03/2020  
Harvest/Production Date:  
Sampling: Random; Environment: Room Temp

### Bubblegum

Plant, Flower - Cured  
Harvest Process Lot: ; METRC Batch: ; METRC Sample:



### Cannabinoids

544 HPLC3 20191002-4  
10/02/2019

1 Serving = , g  
servings/container,

Pass

<b>0.18%</b> Δ9-THC	<b>17.52%</b> Total CBD** (Calculated Decarboxylated Potential)
<b>22.24%</b> Total Cannabinoids Analyzed	<b>8.3%</b> Moisture

Analyte	LOQ mg/g	Mass %	Mass mg/g
THCa		0.59	5.9
Δ9-THC		0.18	1.8
THCV		0.01	0.1
CBDa		18.23	182.3
CBD		1.54	15.4
CBDV		0.05	0.5
CBN		0.01	0.1
CBGa		1.30	13.0
CBG		0.21	2.1
CBC		0.13	1.3
<b>Total</b>		<b>22.24</b>	<b>222.4</b>

Method: CH SOP 400  
\*Total THC = THCa \* 0.877 + d9-THC. \*\*Total CBD = CBDa \* 0.877 + CBD. LOQ = Limit of Quantification; NR = Not Reported; ND = Not Detected



5691 SE International Way B  
Portland, OR  
(503) 305-5252  
http://chemhistory.com  
Lic# OLCC 010-1002015CA5E ORELAP 4057

Douglas Duncan  
Laboratory Director

Confident Cannabis  
All Rights Reserved  
support@confidentcannabis.com  
(866) 506-5866  
www.confidentcannabis.com



Values reported relate only to the product tested. ChemHistory makes no claims as to the consumer safety or other risks associated with any detected or non-detected levels of any pesticides or residual solvents. This Certificate shall not be reproduced except in full, without the written approval of ChemHistory. ORELAP accredited ID#4057 and OLCC Licensed Cannabis Testing Laboratory #010-1002015CA5E.



# Certificate of Analysis

Sample provided to the laboratory by the client and tested as received.

Powered by Confident Cannabis  
2 of 3

## Black Tie CBD

PO Box 1949  
Myrtle Creek, OR 97457  
support@blacktiecbd.net  
(888) 702-2285  
Lic. #

Sample: 1909CH0721.2528

Strain: Bubblegum  
Batch#: ; Batch Size: g  
Sample Received: 09/23/2019; Report Created: 10/03/2019; Expires: 10/03/2020  
Harvest/Production Date:  
Sampling: Random; Environment: Room Temp

## Bubblegum

Plant, Flower - Cured  
Harvest Process Lot: ; METRC Batch: ; METRC Sample:



## Terpenes

559 GCFID1 20191002-1  
10/02/2019

Analyte	Mass %	Mass mg/g	LOQ %
cis-Phytol	<LOQ	<LOQ	0.02
Valencene	0.03	0.3	0.02
Sabinene	<LOQ	<LOQ	0.02
Ocimene 1	<LOQ	<LOQ	0.02
Geraniol	<LOQ	<LOQ	0.02
Neral	<LOQ	<LOQ	0.02
α-Humulene	0.14	1.4	0.02
α-Terpinene	<LOQ	<LOQ	0.02
trans-Phytol	0.11	1.1	0.02
Caryophyllene Oxide	0.05	0.5	0.02
(-) -β-Pinene	0.03	0.3	0.02
α-Pinene	0.07	0.7	0.02
Camphor	<LOQ	<LOQ	0.02
(-) -α-Bisabolol	0.26	2.6	0.02
α-Cedrene	<LOQ	<LOQ	0.02
Terpinolene	<LOQ	<LOQ	0.02
Endo-Fenchyl Alcohol	<LOQ	<LOQ	0.02
p-Isopropyltoluene	<LOQ	<LOQ	0.02
Azulene	<LOQ	<LOQ	0.02
α-Terpineol	<LOQ	<LOQ	0.02
Cedrol	0.13	1.3	0.02
Citral	<LOQ	<LOQ	0.02
(-) -Guaiool	<LOQ	<LOQ	0.02
β-Nerolidol	0.25	2.5	0.02
Linalool	<LOQ	<LOQ	0.02
Neryl Acetate	<LOQ	<LOQ	0.02

Analyte	Mass %	Mass mg/g	LOQ %
β-Myrcene	0.26	2.6	0.02
γ-Terpinene	<LOQ	<LOQ	0.02
Anisole	<LOQ	<LOQ	0.02
Fenchone	<LOQ	<LOQ	0.07
Isoborneol	<LOQ	<LOQ	0.02
δ-Limonene	0.04	0.4	0.02
Ocimene 2	0.04	0.4	0.02
Camphene	<LOQ	<LOQ	0.02
α-Phellandrene	<LOQ	<LOQ	0.02
γ-Terpineol	<LOQ	<LOQ	0.04
Geranyl Acetate	<LOQ	<LOQ	0.18
β-Caryophyllene	0.26	2.6	0.02
Sabinene Hydrate	<LOQ	<LOQ	0.02
Farnesene	0.03	0.3	0.02
Nerol	<LOQ	<LOQ	0.02
trans-Nerolidol	0.04	0.4	0.02
Borneol	<LOQ	<LOQ	0.02
Hexahydro Thymol	<LOQ	<LOQ	0.02
Squalene	0.02	0.2	0.02
δ-3-Carene	<LOQ	<LOQ	0.02
Eucalyptol	<LOQ	<LOQ	0.02
Eugenol	<LOQ	<LOQ	0.02
(-) -Isopulegol	<LOQ	<LOQ	0.02
Pulegone	<LOQ	<LOQ	0.02
cis-Nerolidol	<LOQ	<LOQ	0.02

## Primary Aromas

1.76% Total Terpenes	 Cinnamon	 Hops	 Chamomile	 Orange	 Wood
-------------------------	--------------	----------	---------------	------------	----------

Method: GC-FID CH SOP 401; based on dry weight; LOQ = Limit of Quantification; NR = Not Reported; ND = Not Detected



5691 SE International Way B  
Portland, OR  
(503) 305-5252  
http://chemhistory.com  
Lic# OLCC 010-1002015CA5E ORELAP 4057

*Douglas Duncan*

Douglas Duncan  
Laboratory Director

Confident Cannabis  
All Rights Reserved  
support@confidentcannabis.com  
(866) 506-5866  
www.confidentcannabis.com



Values reported relate only to the product tested. ChemHistory makes no claims as to the consumer safety or other risks associated with any detected or non-detected levels of any pesticides or residual solvents. This Certificate shall not be reproduced except in full, without the written approval of ChemHistory. ORELAP accredited ID#4057 and OLCC Licensed Cannabis Testing Laboratory #010-1002015CA5E.



# Certificate of Analysis

Sample provided to the laboratory by the client and tested as received.

Powered by Confident Cannabis  
3 of 3

## Black Tie CBD

PO Box 1949  
Myrtle Creek, OR 97457  
support@blacktiecbd.net  
(888) 702-2285  
Lic. #

Sample: 1909CH0721.2528

Strain: Bubblegum  
Batch#: ; Batch Size: g  
Sample Received: 09/23/2019; Report Created: 10/03/2019; Expires: 10/03/2020  
Harvest/Production Date:  
Sampling: Random; Environment: Room Temp

## Bubblegum

Plant, Flower - Cured  
Harvest Process Lot: ; METRC Batch: ; METRC Sample:

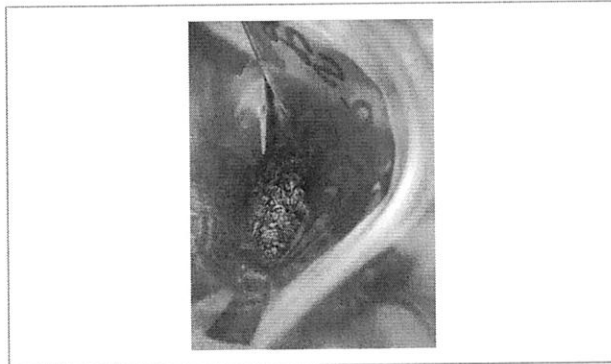


## Moisture

Pass

10/02/2019

**8.3%**  
**Moisture**



5691 SE International Way B  
Portland, OR  
(503) 305-5252  
<http://chemhistory.com>  
Lic# OLCC 010-1002015CA5E ORELAP 4057

Douglas Duncan  
Laboratory Director

Confident Cannabis  
All Rights Reserved  
support@confidentcannabis.com  
(866) 506-5866  
[www.confidentcannabis.com](http://www.confidentcannabis.com)



Values reported relate only to the product tested. ChemHistory makes no claims as to the consumer safety or other risks associated with any detected or non-detected levels of any pesticides or residual solvents. This Certificate shall not be reproduced except in full, without the written approval of ChemHistory. ORELAP accredited ID#4057 and OLCC Licensed Cannabis Testing Laboratory #010-1002015CA5E.