



Certificate of Analysis

Industrial Hemp

Powered by Confident Cannabis
1 of 3

Black Tie CBD

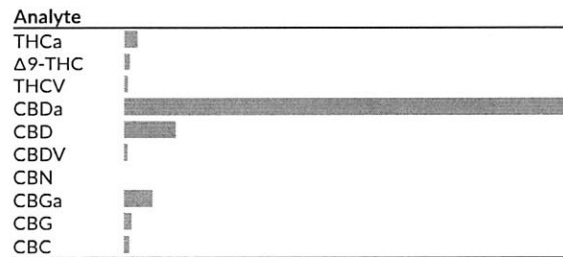
PO Box 1949
Myrtle Creek, OR 97457
support@blacktiecbd.net
(888) 702-2285
Lic. #

Sample: 1909CH0721.2527

Strain: Amnesia Haze CBD
Batch#: ; Batch Size: g
Sample Received: 09/23/2019; Report Created: 10/03/2019; Expires: 10/03/2020
Harvest/Production Date:
Sampling: Random; Environment: Room Temp

Amnesia Haze CBD

Plant, Flower - Cured
Harvest Process Lot: ; METRC Batch: ; METRC Sample:



Cannabinoids

544 HPLC3 20191002-4
10/02/2019

1 Serving = , g
servings/container,

Pass

0.26% Δ9-THC	17.77% Total CBD** (Calculated Decarboxylated Potential)
----------------------------	---------------------------------------------------------------------------

Analyte	LOQ mg/g	Mass %	Mass mg/g
THCa		0.52	5.2
Δ9-THC		0.26	2.6
THCV		0.02	0.2
CBDa		17.87	178.7
CBD		2.09	20.9
CBDV		0.05	0.5
CBN		<LOQ	<LOQ
CBGa		1.13	11.3
CBG		0.27	2.7
CBC		0.19	1.9
Total		22.40	224.0

22.40% Total Cannabinoids Analyzed	8.5% Moisture
--------------------------------------------------	-----------------------------

Method: CH SOP 400
*Total THC = THCa * 0.877 + d9-THC. **Total CBD = CBDa * 0.877 + CBD. LOQ = Limit of Quantification; NR = Not Reported; ND = Not Detected



5691 SE International Way B
Portland, OR
(503) 305-5252
http://chemhistory.com
Lic# OLCC 010-1002015CA5E ORELAP 4057

Douglas Duncan
Laboratory Director

Confident Cannabis
All Rights Reserved
support@confidentcannabis.com
(866) 506-5866
www.confidentcannabis.com





Certificate of Analysis

Sample provided to the laboratory by the client and tested as received.

Powered by Confident Cannabis
2 of 3

Black Tie CBD

PO Box 1949
Myrtle Creek, OR 97457
support@blacktiecbd.net
(888) 702-2285
Lic. #

Sample: 1909CH0721.2527

Strain: Amnesia Haze CBD
Batch#: ; Batch Size: g
Sample Received: 09/23/2019; Report Created: 10/03/2019; Expires: 10/03/2020
Harvest/Production Date:
Sampling: Random; Environment: Room Temp

Amnesia Haze CBD

Plant, Flower - Cured
Harvest Process Lot: ; METRC Batch: ; METRC Sample:

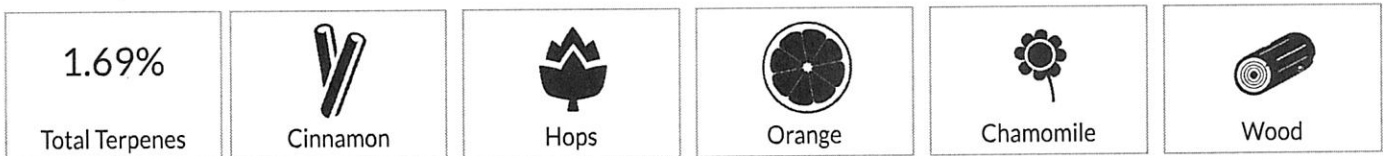


Terpenes

559 GCFID1 20191002-1
10/02/2019

Analyte	Mass %	Mass mg/g	LOQ %	Analyte	Mass %	Mass mg/g	LOQ %
cis-Phytol	<LOQ	<LOQ	0.02	β-Myrcene	0.15	1.5	0.02
Valencene	0.03	0.3	0.02	γ-Terpinene	<LOQ	<LOQ	0.02
Sabinene	<LOQ	<LOQ	0.02	Anisole	<LOQ	<LOQ	0.02
Ocimene 1	<LOQ	<LOQ	0.02	Fenchone	<LOQ	<LOQ	0.07
Geraniol	<LOQ	<LOQ	0.02	Isoborneol	<LOQ	<LOQ	0.02
Neral	<LOQ	<LOQ	0.02	δ-Limonene	0.04	0.4	0.02
α-Humulene	0.19	1.9	0.02	Ocimene 2	<LOQ	<LOQ	0.02
α-Terpinene	<LOQ	<LOQ	0.02	Camphene	<LOQ	<LOQ	0.02
trans-Phytol	0.13	1.3	0.02	α-Phellandrene	<LOQ	<LOQ	0.02
Caryophyllene Oxide	0.05	0.5	0.02	γ-Terpineol	<LOQ	<LOQ	0.04
(-)-β-Pinene	0.03	0.3	0.02	Geranyl Acetate	<LOQ	<LOQ	0.18
α-Pinene	0.10	1.0	0.02	β-Caryophyllene	0.36	3.6	0.02
Camphor	<LOQ	<LOQ	0.02	Sabinene Hydrate	<LOQ	<LOQ	0.02
(-)-α-Bisabolol	0.19	1.9	0.02	Farnesene	0.03	0.3	0.02
α-Cedrene	<LOQ	<LOQ	0.02	Nerol	<LOQ	<LOQ	0.02
Terpinolene	<LOQ	<LOQ	0.02	trans-Nerolidol	0.05	0.5	0.02
Endo-Fenchyl Alcohol	<LOQ	<LOQ	0.02	Borneol	<LOQ	<LOQ	0.02
p-Isopropyltoluene	<LOQ	<LOQ	0.02	Hexahydro Thymol	<LOQ	<LOQ	0.02
Azulene	<LOQ	<LOQ	0.02	Squalene	0.02	0.2	0.02
α-Terpineol	<LOQ	<LOQ	0.02	δ-3-Carene	<LOQ	<LOQ	0.02
Cedrol	0.13	1.3	0.02	Eucalyptol	<LOQ	<LOQ	0.02
Citral	<LOQ	<LOQ	0.02	Eugenol	<LOQ	<LOQ	0.02
(-)-Guaiaol	<LOQ	<LOQ	0.02	(-)-Isopulegol	<LOQ	<LOQ	0.02
β-Nerolidol	0.19	1.9	0.02	Pulegone	<LOQ	<LOQ	0.02
Linalool	<LOQ	<LOQ	0.02	cis-Nerolidol	<LOQ	<LOQ	0.02
Neryl Acetate	<LOQ	<LOQ	0.02				

Primary Aromas



Method: GC-FID CH SOP 401; based on dry weight; LOQ = Limit of Quantification; NR = Not Reported; ND = Not Detected



5691 SE International Way B
Portland, OR
(503) 305-5252
http://chemhistory.com
Lic# OLCC 010-1002015CA5E ORELAP 4057

Douglas Duncan

Douglas Duncan
Laboratory Director

Confident Cannabis
All Rights Reserved
support@confidentcannabis.com
(866) 506-5866
www.confidentcannabis.com



Values reported relate only to the product tested. ChemHistory makes no claims as to the consumer safety or other risks associated with any detected or non-detected levels of any pesticides or residual solvents. This Certificate shall not be reproduced except in full, without the written approval of ChemHistory. ORELAP accredited ID#4057 and OLCC Licensed Cannabis Testing Laboratory #010-1002015CA5E.



Certificate of Analysis

Sample provided to the laboratory by the client and tested as received.

Powered by Confident Cannabis
3 of 3

Black Tie CBD

PO Box 1949
Myrtle Creek, OR 97457
support@blacktiecbd.net
(888) 702-2285
Lic. #

Sample: 1909CH0721.2527

Strain: Amnesia Haze CBD
Batch#: ; Batch Size: g
Sample Received: 09/23/2019; Report Created: 10/03/2019; Expires: 10/03/2020
Harvest/Production Date:
Sampling: Random; Environment: Room Temp

Amnesia Haze CBD

Plant, Flower - Cured
Harvest Process Lot: ; METRC Batch: ; METRC Sample:



Moisture

Pass

10/02/2019

8.5%
Moisture



5691 SE International Way B
Portland, OR
(503) 305-5252
<http://chemhistory.com>
Lic# OLCC 010-1002015CA5E ORELAP 4057

Douglas Duncan
Laboratory Director

Confident Cannabis
All Rights Reserved
support@confidentcannabis.com
(866) 506-5866
www.confidentcannabis.com



Values reported relate only to the product tested. ChemHistory makes no claims as to the consumer safety or other risks associated with any detected or non-detected levels of any pesticides or residual solvents. This Certificate shall not be reproduced except in full, without the written approval of ChemHistory. ORELAP accredited ID#4057 and OLCC Licensed Cannabis Testing Laboratory #010-1002015CA5E.