

CLEANING INSTRUCTIONS

MULTIFRUIT

Caution! For a correct cleaning process please follow the instructions below. Make sure machine is unplugged from electrical current.

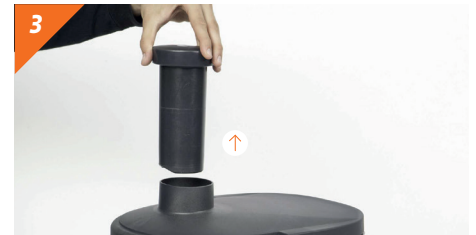
Zumex recommends **cleaning the machine at least once or twice a day**, depending on how much it is used in order to maintain optimal food hygiene conditions.



1 Raise security handle.



2 Remove security handle by positioning horizontally and pulling handle in the opposite direction.



3 Remove food pusher.



4 Remove tap by pulling out.



5 Remove top Multifruit lid by lifting upwards.



6 Remove waste container by pulling up horizontally.



7 Disassemble grating filter and juice tank by pulling upwards.



8 Separate filter from filter cover.
ATTENTION! Do not touch the sharp points of the grater as they could cut you.



9 Remove coaster from coaster tray by inserting your index finger and pulling out gently.



10 Pull out coaster tray.



11 Clean parts.

! INFORMATION

All pieces, **EXCEPT THE MOTOR HOUSING**, can be cleaned in a dishwasher.

The juice extraction zone and the front cover should be cleaned using a moist cloth and dish washing liquid. Rinse with clean water to remove any washing liquid traces.

Citroclean is perfect to clean the parts in contact with fresh products.

To assemble the machine repeat the process in reverse and ready to work.