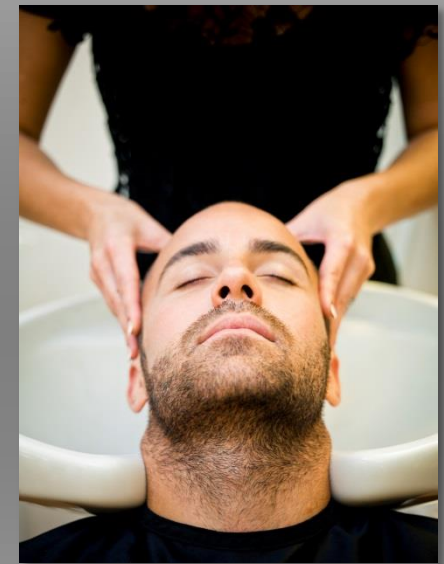


50A SHAMPOO SYSTEM



Simply the best selling and most comfortable shampoo system available.

Key Innovations

White Porcelain Tilt-Bowl, Self-Adjusting Seat, Self-Adjusting Lumbar Support, European Backwash or Traditional Sidewash Setup, Stainless Steel Construction, Through-the-Floor, -Side or -Back Plumbing Options, No Leg-Rest Design, In-Step Design, No Additional Accessories Required, Completely Assembled, Meets CATB117 Standards, IAPMO-Tested, UPC-Listed.



INNOVATIONS

The 50A Shampoo Backwash System is a perfect example of typical Garfield industry-leading innovation. Combining top of the line materials & finishes with unmatched design & comfort, it's the perfect look for your neighborhood and avant garde salons. That's the 50A Shampoo Backwash System – the best selling backwash system and most comfortable shampoo experience.

Self-Adjusting Comfort System

The hallmark of the 50A is its integrated, self-adjusting seating and tilt-bowl system. As the customer settles in, the seat cushion automatically slides forward to accommodate the height of the client, and in unison, the back cushion will also automatically articulate to offer lumbar support. To finish the bowl can automatically or manually adjust to accommodate the client's height.

Porcelain Tilt-Bowl

Garfield's innovative tilt-bowl design features one of the highest degree of articulation available today. This means that the 50A is able to adjust and accommodate a wider range of clients; from those tall basketball players to those little old ladies. Both deep and wide, the porcelain bowl minimizes splashing and keeps your shampoo area dry and clean. The bowl's porcelain enamel finish offers superior durability and the ultimate stain, chemical, and scratch resistance. The 2013 version arrives complete with white porcelain bowls for color-specialty salons.

Comfort Faucet Set

Designed for looks and comfort, the GLT05 Faucet is features clean, modern lines and a palm-fitting, saddle design that minimizes over-turning and twisting by the stylists' wrists. The GLT05 Faucet Set is UPC-listed (including MA-Listed). A deck-mounted vacuum breaker is included to pass all inspections.

Stainless Steel Frame

Nothing can match the look and performance of stainless steel. Designed to weather the toughest wet conditions without rusting, the 50A's minimalist frame design is sexy, functional, and matches all decors.

Through-The-Back, -Side, or -Floor Plumbing

Nothing is worse than falling in love with a shampoo system just to find that the plumbing is not setup for your salon. Save your tissues for the competition, because the 50A was one of the first to offer both through-the-back AND through-the-floor plumbing options as a standard feature. Replacing your old uncomfortable, wall-mounted shampoo bowls with the 50A has never been easier. A removable access panel discreetly hides all the drain and water lines while a pre-cut access hole allows for easy and fast setup.

Lowered Seating

The 50A was designed to save space while maximizing comfort (for client and stylist) by lowering the entire unit by 3-5 inches; compared to the average shampoo backwash systems. Doing so enables the client to fully plant their feet to the floor and eliminate the requirement for an extending footrest. Doing so also shortens the overall "footprint" of the 50A, and allows for more traffic/maneuvering space in your shampoo area.

In-Step Design

While aesthetically alluring, the main cylinder's tilt-design enables the backwash stylists to stand closer to the customer without over-articulating his/her back. This innovative tilt-design allows the stylist's feet to step under the bowl and gain an additional 9 inches of reach while minimizing physical adjustments.

Polyurethane Neckrest

Better moisture-resistance than rubber and better gripping than silicon, the 50A arrives complete with an top-of-the-line polyurethane neckrest that helps increase comfort while during treatment and wash/rise.





Miscellaneous Specifications

1. Pedestal Diameter: \varnothing 10.02"
2. Floor to Waterline Insert: 12.5"
3. UPC/IAPMO Files: 3605, 5442, 6772
4. Shipping Via Freight: 55"x28"x44", 190 LBS

Installation

DO NOT USE ANY PORTION OF THE PLUMBING FOR LIFTING OR POSITIONING THE SINK. THIS UNIT MUST BE FASTENED TO THE FLOOR. PLUMBING FIXTURES ALONE ARE INSUFFICIENT IN SAFELY HOLDING THE UNIT SECURELY IN PLACE. FLOOR CLEATS AND SPECIAL FASTENERS MAY BE NECESSARY FOR THE PROPER INSTALLATION OF THE SHAMPOO UNITS. BECAUSE EACH SALON AND CONSTRUCTION PROCESS IS DIFFERENT, WE SUGGEST THAT THESE BE OBTAINED LOCALLY BY THE INSTALLER. LITERATURE DIMENSIONS ARE FOR GENERAL REFERENCE USE ONLY. INSTALLATION DIMENSIONS SHOULD BE TAKEN DIRECTLY FROM THE SINK. GARFIELD RECOMMENDS THAT A LICENSED PLUMBER PLAN & PERFORM INSTALLATION. A LICENSED PLUMBER MUST PLAN & PERFORM INSTALLATION. ALL WORK MUST MEET LOCAL PLUMBING STANDARDS. CHECK WITH YOUR LOCAL PLUMBING INSPECTOR PRIOR TO STARTING ANY PLUMBING WORK. GARFIELD IS NOT RESPONSIBLE FOR INCLUDING LOCAL PLUMBING CODES WITHIN THIS GUIDE. IT IS THE RESPONSIBILITY OF THE PURCHASER AND/ OR THE INSTALLER TO ENSURE THAT THE BOWLS AND ITS' INSTALLATION CONFORMS TO ALL LOCAL PLUMBING CODES.

