



advanced FLOW engineering

TECHNICAL BULLETIN

No: 06-50029

PRODUCT P/N affected by this bulletin

46-20049 Intercooler Tube Upgrade
46-20059 Intercooler Tube Upgrade

DATE ISSUED:

May 26th, 2010

MAKE:

GM

MODEL:

Duramax -
LLY/LBZ & LMM

YEARS:

2004-2007
2007.5-2009

ENGINE:

V8 - 6.6L (td)



GM LLY/LBZ '04-'07



P/N 46-20049



GM LMM '07.5-'09



P/N 46-20059

Concern:

Interference may occur between the brake line and the aFe intercooler tube upgrade. This could potentially cause damage to the brake line. For these situations, aFe has developed a bracket relocate plate to ensure sufficient clearance.

Step 1:

Please check the gap between of the brake line and the aFepower intercooler tube upgrade (See Fig. 1). Does the brake line touch the intercooler tube?

Step 2:

If it touches or is very close, please contact aFePower by phone at (951)493-7100 or email tech@afepower.com to request bracket relocater plate (P/N 05-60049). Upon receipt of proof of purchase, aFePower will send you the bracket relocater plate free of charge.

Step 3:

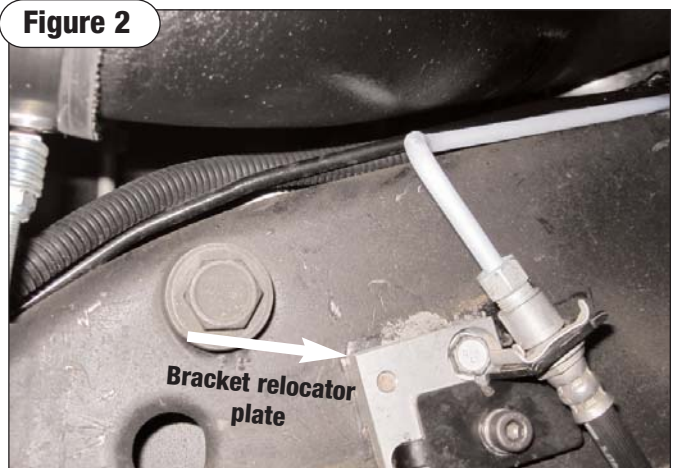
Install the plate as shown in Fig 2, moving the brake line closer to the frame and away from the aFepower intercooler tube upgrade.

If you have any questions, please call aFe at (951)493-7100.

Figure 1



Figure 2





advanced FLOW engineering™
 P.O. Box 1719
 Corona, CA 92878
 Support: 951-493-7100
 aFepower.com

Intercooler Tube Upgrade Installation Instructions: 2004.5-2010 GM DURAMAX V8-6.6L (td) LLY/LBZ/LMM

Kit Part Number:

48-20049

Make: Chevrolet

Model: Silverado HD '07 5-'10

Silverado HD '06-'07

Silverado HD '04.5-'05

Year:

'07 5-'10

'06-'07

'04.5-'05

Engine:

V8-8.6L (td) LMM

V8-6.6L (td) LLY/LBZ

V8-6.6L (td) LLY

Make: GMC

Model: Sierra HD '07.5-'10

Sierra HD '06-'07

Sierra HD '04 5-'05

Year:

'07.5-'10

'06-'07

'04 5-'05

Engine:

V8-6.6L (td) LMM

V8-6.6L (td) LLY/LBZ

V8-6.6L (td) LLY

Tools Required:

7/16" deep socket or wrench

13 mm socket

Torque wrench

Ratchet w/ extension

Flat tip screw driver or pin pry tool

Steel wire or twine

New/clean motor oil

48-20049 Parts list:

1 Intercooler tube

1 Coupler, Silicone hump, 3" Dia.

3 Clamps, Spring loaded T-bolt, 3.25" Dia.

1 Coupler, Silicone reducer

1 Bracket adapter

1 Screw, Hex head, M8 x 1.25 x 12

1 Washer, Lock, M8

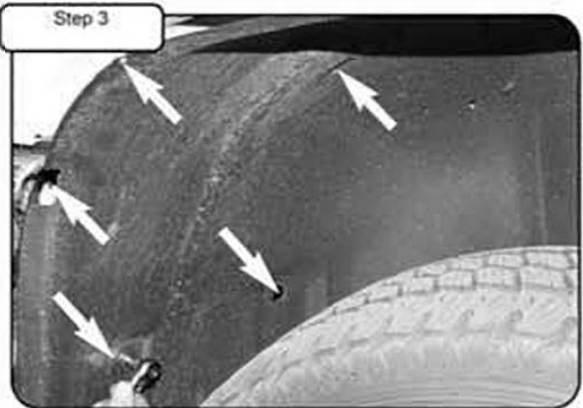
Complete Kit
 P/N: 48-20049



Stock intercooler tube.



Loosen clamps on the turbo outlet using 7/16" deep socket or wrench. Do not damage the clamp to the turbo housing, as it will be re-used.



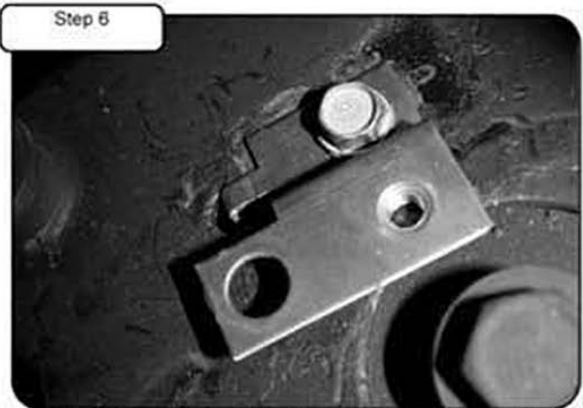
Remove the fasteners that attach the driver's side fender well forward portion. Pull back fender well and secure with steel wire or twine to access intercooler coupler.



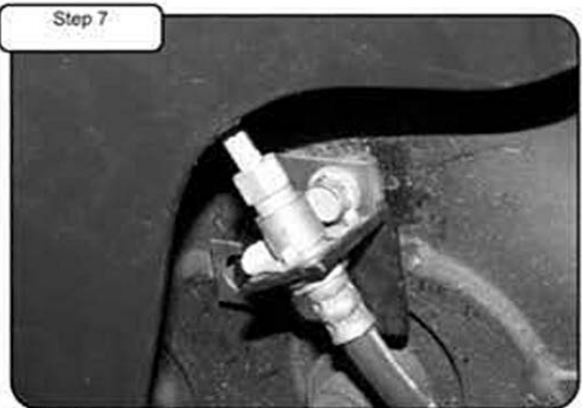
Loosen clamps on the intercooler elbow coupler using 7/16" deep socket with extension.



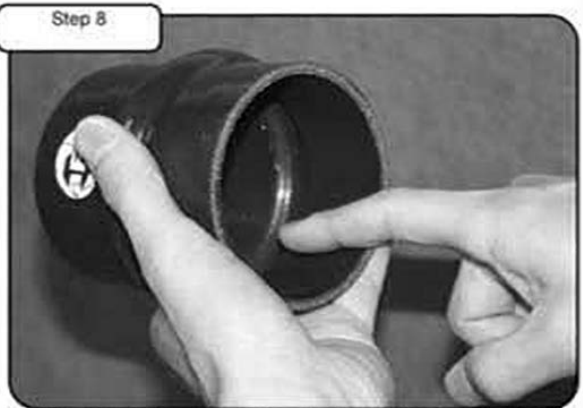
Remove the stock intercooler tube through the fender well.



Remove brake line bracket from the frame at fender well using 13mm socket. Install bracket adapter supplied with original screw.



Install brake line bracket to the bracket adapter with M8 hex head screw and lock washer supplied.



Lightly coat inside surface of 3" DIA silicone hump coupler with new/clean oil.

California vehicle code sections 27156 and 38391 prohibit the advertising, offering for sale, or installation of any device, which modifies a vehicle's emission control system unless exempted. Unless otherwise noted, aFePower have not received an exemption from these code sections and are not legal for sale or use in California on vehicles originally equipped with pollution-control devices. It is illegal, except for racing vehicles, which may never be driven upon a highway, to remove or obstruct or render inoperative any emission control device on regulated motor vehicles. Check the aFe website to ensure proper application.



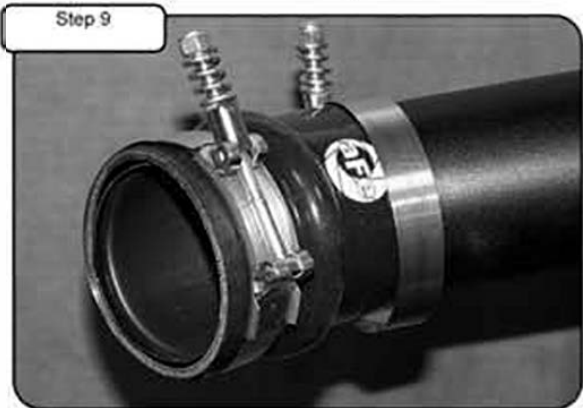
advanced FLOW engineering™
 P.O. Box 1719
 Corona, CA 92878
 Support: 951-493-7100
 aFepower.com

Intercooler Tube Upgrade Installation Instructions: 2004.5-2010 GM DURAMAX V8-6.6L (td) LLY/LBZ/LMM

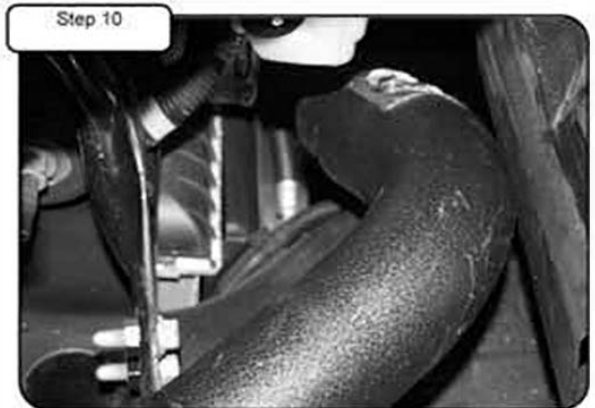
Kit Part Number: 46-20049		
Make: Chevrolet	Year:	Engine:
Silverado HD	'07.5-'10	V8-8.6L (td) LMM
Silverado HD	'06-'07	V8-6.6L (td) LLY/LBZ
Silverado HD	'04.5-'05	V8-6.6L (td) LLY
Make: GMC	Year:	Engine:
Sierra HD	'07.5-'10	V8-6.6L (td) LMM
Sierra HD	'06-'07	V8-6.6L (td) LLY/LBZ
Sierra HD	'04.5-'05	V8-6.6L (td) LLY

Tools Required:
7/16" deep socket or wrench
13 mm socket
Torque wrench
Ratchet w/ extension
Flat tip screw driver or pin pry tool
Steel wire or twine
New/clean motor oil

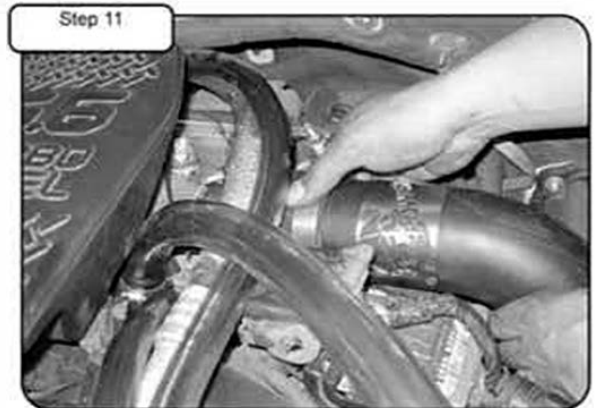
46-20049 Parts list:
1 Intercooler tube
1 Coupler, Silicone hump, 3" Dia.
3 Clamps, Spring loaded T-bolt, 3.25" Dia.
1 Coupler, Silicone reducer
1 Bracket adapter
1 Washer-head 1/8" x 1.25 x 12



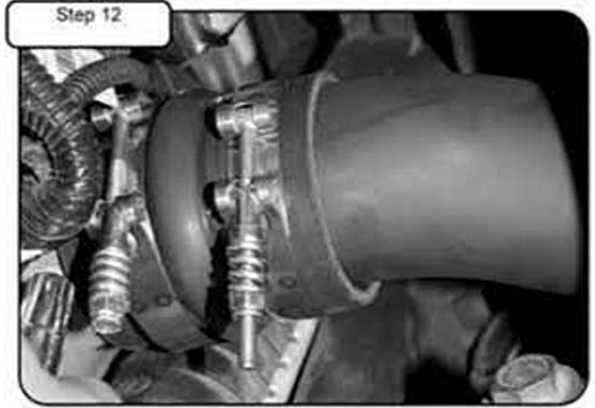
Slide hump coupler and clamps onto intercooler tube end opposite aFe badge. Position coupler flush to tube end.



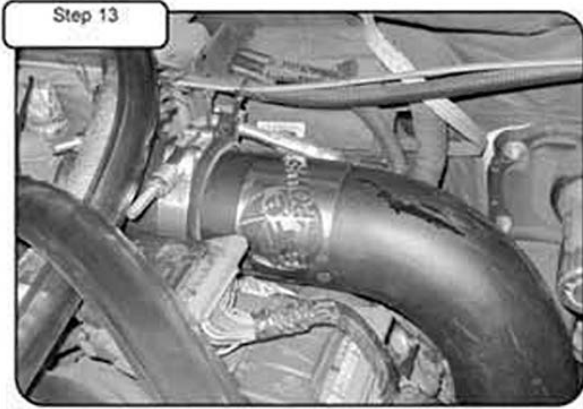
Install the new aFePower intercooler tube through the fender well. A second pair of hands guiding intercooler tube from above is highly recommended.



Install the silicone reducer coupler provided onto turbo housing. Install intercooler tube into coupler. Do not tighten clamps so the tube can move and flex to ease installation of coupler at intercooler inlet.



Align tube end with intercooler inlet. Slide aFe coupler back off the tube to engage the intercooler inlet. Tighten and torque all clamps to 75 in-lbs. Re-install fender well.



The charge air temperature may reach 400°F or higher at full load. Ensure wiring are routed away from intercooler tube. Your installation is now complete. Thank you for choosing aFePower!