



Manufacture Date:

[Blank box for Manufacture Date]

# TITANIUM SIGNATURE SERIES INSTALLATION MANUAL

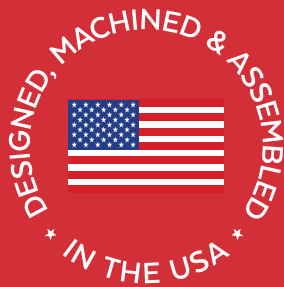
## ALL 1/2" FUEL PORTS



### APPLICATION:

- TS-F16-250G  
(250GPH @ 8-10PSI)
- TS-F16-290G  
(290GPH @ 8-10PSI)

Powerstroke 6.4L  
Standard Pickup Truck  
2008-2010



Note: Cab and Chassis  
may require modifications



[www.fassride.com](http://www.fassride.com)

(866) 769.3747

## **Thank you for choosing FASS, from Diesel Performance Products, Inc.**

FASS specializes in building extremely high-quality fuel products. We have earned an unsurpassed reputation for excellence in our industry by using only the highest-quality American-made components. In order to support our American workers and our American economy, more than 98+ percent of our products are manufactured completely in the United States.

Of course, that dedication to excellence comes at a price, but it is important to remember that price does not dictate quality—quality dictates price! We will never compromise by using cheaper, foreign-made components, like so many of our competitors do.

Customer satisfaction is our top priority and we strive always to provide outstanding customer service. Our Research and Development department, in conjunction with our Dealer Support Department, continually searches for ways to improve quality, expand our product line, and provide superb support. Our exclusive ViP Network ensures that customers receive the proper products and support at the local level. The extended four-year warranty is only available on products purchased from the network. There is no warranty on products not purchased outside the network.

### **IMPORTANT:**

*In order to qualify for the Four-year extended warranty, your product registration form and proof of purchase from an authorized dealer must be submitted to FASS Fuel Systems within 30 days of purchase. Failure to comply will void the warranty. We have the right to deny any warranty believed to be false, altered or purchased through an unauthorized or terminated dealer. A current list of authorized dealers can be found on our website, FASSRide.com.*

The complete conditions of the Limitation of Warranty can be found in the back of this manual, and FASSRide.com.

The installation of this product indicates that the buyer has read and understands the Warranty agreement and accepts its terms and conditions. In the event that the buyer does not agree with the terms, the product—in new, unused condition—along with the dated receipt should be returned within thirty (30) days of the date of purchase for a full refund less shipping costs.

**For more information,  
contact Technical Support:  
Diesel Performance Products, Inc.  
16240 State Hwy O, Suite B  
Marthasville, MO 63357  
636-433-5410**



**WARNING!**

This product has **NO WARRANTY** unless:

1. It has been purchased from an **Authorized** or **ViP FASS Dealer**. If in doubt, check **www.FASSRide.com**. (If your purchase was made on Amazon.com, the warranty is void. Return the FASS product to the seller and get a refund).
2. It is registered within thirty (30) days of purchase.

*Other conditions may apply. Please see full warranty information.*

**ATTENTION!**

**Before you begin installation**

**Register for your Warranty ONLINE at [https://  
www.fassride.com/register-a-warranty/](https://www.fassride.com/register-a-warranty/)**

**No online access, call our TECH Support at  
1-866-769-3747**

# FOLLOW THESE STEPS TO ENSURE A SIMPLE, CORRECT INSTALLATION OF YOUR NEW TITANIUM FUEL SYSTEM

## ATTENTION:

**Be sure to identify the proper FASS System and fuel line configuration. For help, our product finder can be found at [www.FASSride.com](http://www.FASSride.com). Follow the instructions to see fuel line detail.**

- 1** Be sure the serial number on this installation manual matches that on the outside of the box.
- 2** Pay close attention to ALL WARNINGS
- 3** Read all instructions before starting installation of this product.
- 4** Inventory the package components. Notify the place of purchase immediately of any parts missing or damaged.
- 5** The installation recommendations contained herein are guidelines. Use good judgment and take into consideration your vehicles' accessories.
- 6** For best results in accuracy and efficiency (due to training, communication, and our relationship with our dealer network), we recommend a VIP FASS dealer for the installation. They are prepared to install the FASS fuel pumps with the most efficiency. If a situation or problem arises during the installation, the dealer is prepared to handle it. Diesel Performance Products, Inc. is not responsible for any installation mistakes.
- 7** If you have any questions or concerns that cannot be addressed with your dealer, email or call FASS.

---

**If any installation procedure is uncertain, contact FASS technical support. Call customer service at 636-433-5410, or send us an e-mail: [techsupport@FASSride.com](mailto:techsupport@FASSride.com) with the following information:**

---

Your name, address and daytime phone number  
Model (TS-F16-250G) or (TS-F16-290G)  
Serial Number  
Last 6 digits of vehicles' VIN

Date of purchase  
Nature of Your Concern  
Serial number .....



# INSTALLATION MANUAL

## **TS-F16-250G or TS-F16-290G**

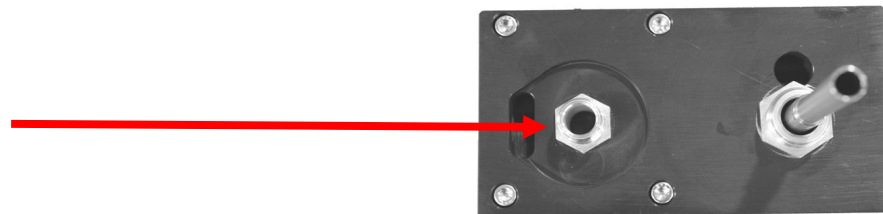
(Installation Videos are available at [www.fassride.com](http://www.fassride.com))

### RECOMMENDED APPLICATION

**TS-F16-250G:** Powerstroke (6.4L) 2008-2010 with extreme horsepower modifications

**TS-F16-290G:** Powerstroke (6.4L) 2008-2010 with extreme horsepower modifications

1. **Read all instructions before starting installation of this product!**
2. **Installing the improper FASS Pump can cause severe engine damage.**
3. **Secure vehicle from ROLLING!**
4. **Cab and Chassis may require modifications**
5. **Consult vehicle's manufacturers' instructions concerning the electrical system before attempting any electrical connections.**
6. **Be sure that the serial # on this installation manual matches that of the outside of the box.**
7. **Flush and clean all brass fittings and fuel line from debris.**
8. **Keep debris from entering the internals of the system during installation. Getting debris in the water separator nipple can lock up the motor. If the motor does lock up from debris call FASS for technical assistance.**



9. **Wear safety glasses when operating power tools such as drills and grinders or when using a punch or chisel.**
10. **Properly secure lines to prevent chaffing.**

**BEFORE STARTING THE INSTALLATION PROCESS LUBRICATE THE BED BOLT WITH WD-40 TO HELP WITH INSTALLATION**

**TITANIUM**  
**Signature SERIES**  
**250GPH or 290GPH**  
**8-10 psi (Approximately)**

Rear View



Front View



**PUMP GUIDE:**

- 1. "E" To Engine**
- 2. "R" Return to Tank**
- 3. "H" Coolant Heater Ports**
- 4. Serial Number**
- 5. "T" Fuel Inlet**
- 6. Electric Heater Ports**
- 7. "G" Gauge Port**

**INSTALLATION GUIDE:**

- Step 1. Install Electrical Harness**
- Step 2. Prep the FASS**
- Step 3. Mount the FASS**
- Step 4. Fuel Line Supply**
- Step 5. Review Installation**





www.fassride.com  
(866) 769.3747

**TITANIUM  
SIGNATURE SERIES  
250 GPH or 290 GPH**

**8-10 PSI (Approximately)**  
Note: Going over 80 PSI WILL void warranty.

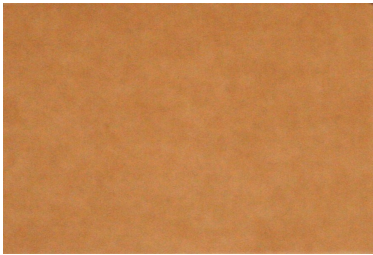
**NOTE: WARRANTY MAY BE VOID IF SILICONE  
BAND IS REMOVED FROM MOTOR!!**

*The silicone band is in place to retain motor  
wires, preventing damage to the electric motor.*



# CONTENTS

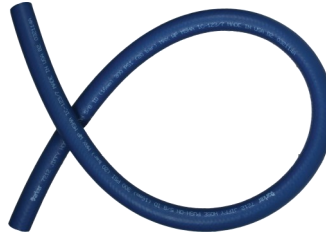
**NOTE:** Owner's Manual available for download on our website,  
[www.FASSride.com](http://www.FASSride.com)



**MP-9054**



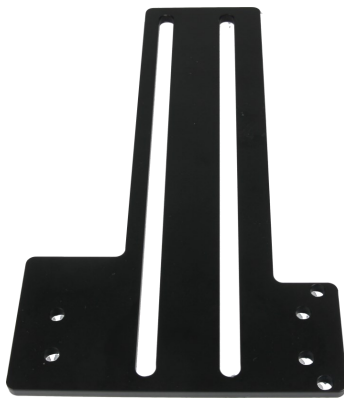
**FL-1002X9'**



**FL-1058X3'**



**WH-1005-3**



**PBR-2001**



**PFB-2002**



**PFB-2001C**



# MOUNTING PACKAGE CONTENTS



**PL-1058**



**PL-1010**



**BHF-1002**



**10-300**



**OR-223**



**LW-1001**



**BHN-1001**



**10-302**



**PLB-1212**



**TWO (2) PLB-1238**



**TWO (2) PL-1005**



**TWO (2) RING  
TERMINAL**



**WE-1006**



**PL-1004**



**HEX BOLT  
1/2" -20x1  
3/4"**



**1/2" WASHERS**



**THREE (3) WA-1001D**



**CABLE TIES**



**FOUR (4)  
3/8"  
WASHERS**

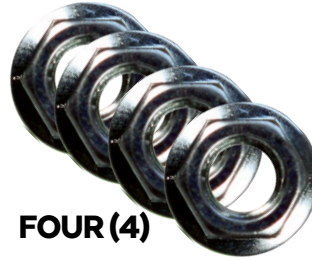
## MOUNTING PACKAGE CONTENTS



FOUR (4) HEX BOLT  
3/8" -16x11/2"



THREE (3) 1/4" -20xl  
3/4"



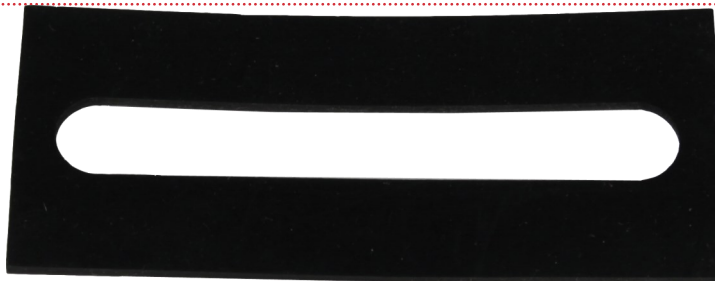
FOUR (4)  
LOCKING NUT  
3/8"



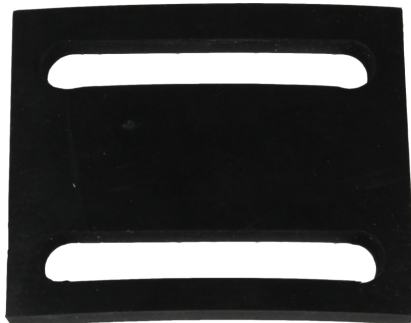
ST-1005Px16"



RS-2001C



RS-2001



RS-2002

**STEP 1:**  
**INSTALL ELECTRICAL HARNESS**

The installation of the electrical harness is done first, allowing power to be applied to the pump for lubrication purposes later in the installation.

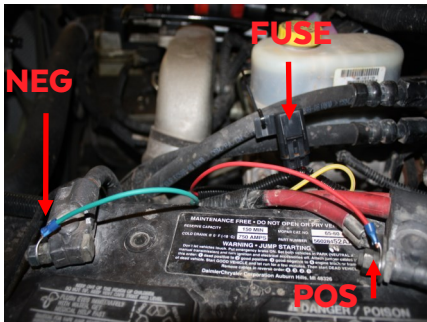
**NOTE: USE SUPPLIED DIELECTRIC GREASE  
SPARINGLY ON ALL ELECTRICAL  
CONNECTIONS! BE SURE TO GREASE RELAY  
PIGTAIL!**



## **STEP 1:** **INSTALL ELECTRICAL HARNESS**

The installation of the electrical harness is done first, allowing power to be applied to the pump for lubrication purposes later in the installation.

- A.** Using ring terminals, attach red wire of the WH-1005-3 to the positive battery terminal. Attach green wire to a clean ground, preferably the negative battery terminal. Secure fuse block in a location protected from outside elements. The use of a corrosion preventative on electrical connections is recommended.



- B.** Secure Relay in an upright position, as shown, to prevent moisture from entering. Apply dielectric grease to relay pigtail.



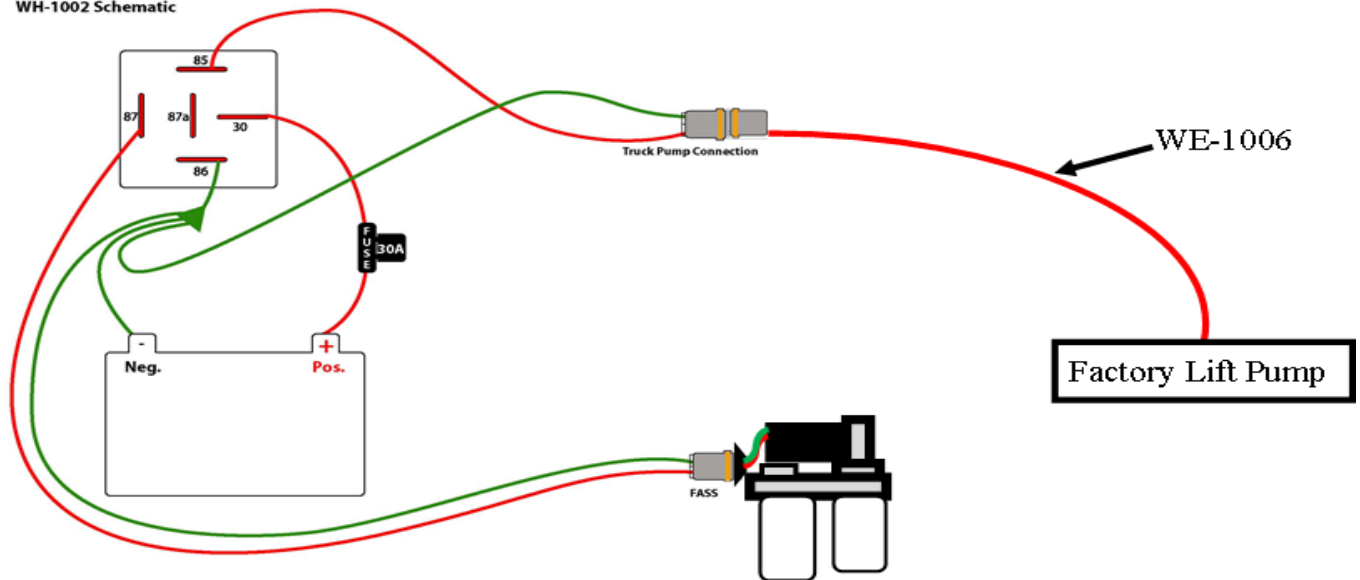
- C.** Connect WE-1006 to the female lead of the WH-1005-3 coming off the relay. Route the WH-1005-3 and WE-1006 along frame rail to the factory lift pump. Completion of this step will be addressed in the mounting step.



## **STEP 1:** **INSTALL ELECTRICAL HARNESS**

The installation of the electrical harness is done first, allowing power to be applied to the pump for lubrication purposes.

FASS  
Wiring Harness  
WH-1002 Schematic





## **STEP 2: PREPARE SUCTION & RETURN LINES**

Some of the photo's are of a different application, procedures are the same.

**NOTE: Before installing fittings make sure to inspect for burs or flare imperfections. When cutting fuel line make sure to blow out line to keep debris from moving forward.**

- A.** Before tank is removed or moved, identify ALL areas of clearance between the tank and the truck's bed for the best location to install the BHF assembly. With proper clearance, you want to install it as close to the Fuel sending unit as possible.

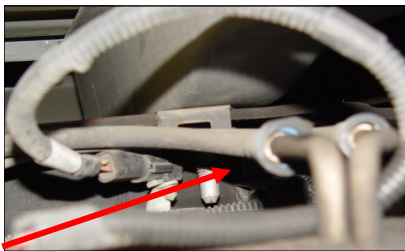


- B.** Remove the filler neck and overflow tubes from the truck by loosening the clamps at both ends.



**Helpful Hint: If more space is required to access the top of the fuel tank, loosen the strap nuts to the end of the stud. This will gain you about 3" more working room.**

- C.** Disconnect factory suction and return lines by pinching in side tabs.



- D.** Disconnect factory wire harness.

- E.** With the fuel tank empty of fuel, remove it from the vehicle.



## **STEP 2:** **PREPARE SUCTION & RETURN LINES**

- F. Clean the fuel module area then remove the lock ring on the top of the fuel tank.
- G. Once the lock ring is removed, carefully remove pick up module from fuel tank without bending fuel level float.



**NOTE: Hose clamps are not recommended for push lock fittings. They will hold up to 300psi! Use oil on fittings and inside fuel line when installing Push-Lok fittings**

- H. Assemble the BHF-1002 with the PL-1010 in port "S" using thread tape & the PL-1004 in port "R". **\*\*DO NOT USE THREAD TAPE ON PL-1004, FITTING IS EQUIPPED WITH THREAD SEALANT\*\*** Torque fittings to 20 ft./lbs. Push the ST-1005P onto the barb portion of the BHF-1002. Insert O-ring into groove.



- I. Before drilling marked location, clean area of debris. Using the photo double and check area selected for any interference including the fuel level arm.



## **STEP 2:** **PREPARE SUCTION & RETURN LINES**

**J.** Drill a 1 3/8" hole, catching all debris. De-bur hole and remove any missed debris in the fuel tank.



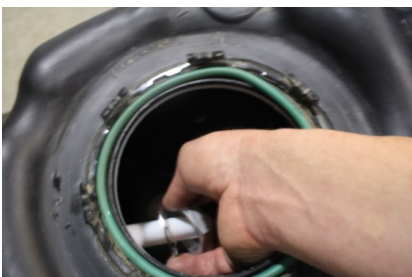
**K. VERY IMPORTANT:** Support fuel tank on both ends allowing the natural formation of the tank to take place. Failure to perform this step can and will create an issue with less usable fuel!



**L.** Place the bulk head assembly into the drilled hole, take measurements so the bottom of the suction tube is only 1/8" (no more than 2 quarters stacked) from the bottom of the fuel tank. Using a razor knife, make multi-ple cuts to insure proper length, it is easy to shave the suction tube with the razor. **It is more efficient to cut the tube too long and then correct to proper length than it would be to cut too short.**



**M.** With proper length being obtained, place the assembly into the drilled hole securing the assembly using the lock washer & nut. Tighten Nut. Loctite may be applied to the threads of the BHF-1002 for added insurance.



**STEP 2:**  
**PREPARE SUCTION &  
RETURN LINES**

**N.** Carefully reinstall install pick up module making sure the leveling float is not obstructed by the suction tube. Reinstall factory lock ring.

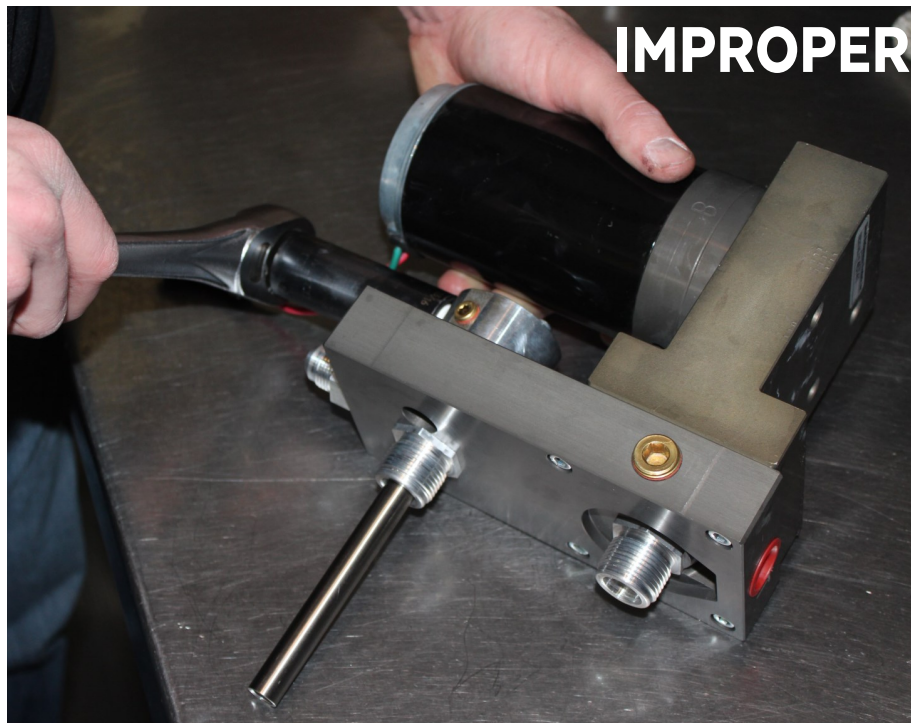
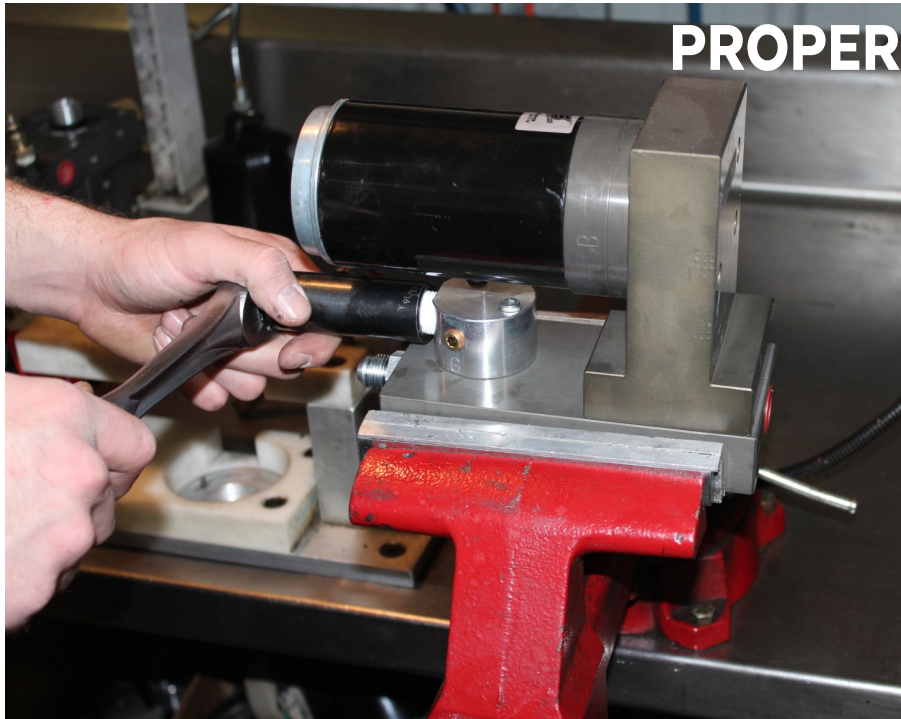


**O.** Push one end of the 1/2" fuel line onto 'R' port of suction tube assy. & one end of the 5/8" onto the 'S' port. Loop fuel line over frame. Do not cut at this time. Reinstall fuel tank making sure to reconnect factory suction line, factory return line, and electrical connections. Torque hanger bolts to fac-tory specifications.





**ATTENTION: While installing fittings into Titanium pump  
DO NOT Apply side pressure to draw tube of pump**

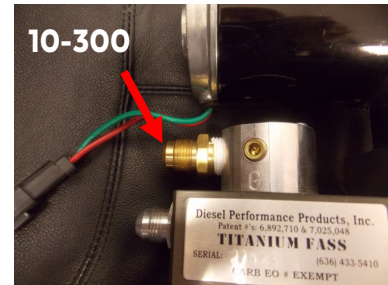
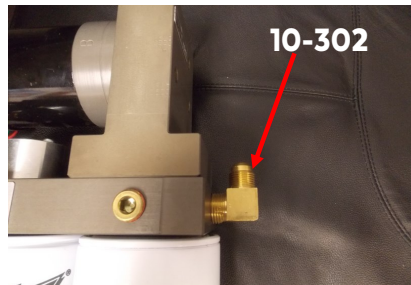




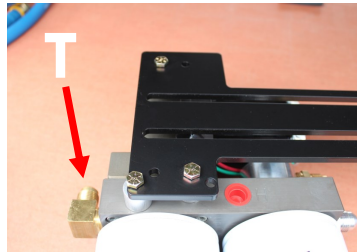
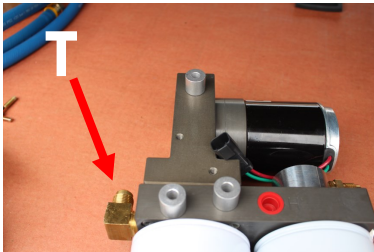
## STEP 3: MOUNT FUEL SYSTEM

**NOTE: Before installing fittings make sure to inspect for burs or flare imperfections. When cutting fuel line make sure to blow out line to keep debris from moving forward.**

- A. Install 10-300 into the "E" port and 10-302 into the "T" port of the FASS, torque to 20 ft./lbs.  
\*\*\*FITTINGS COME EQUIPPED WITH THREAD SEALANT, DO NOT USE THREAD TAPE\*\*\*



- B. For fitting purposes. Secure PBR-2001 to pump assembly lightly with (3) 1/4"-20x1 3/4 bolts and (3) WA-1001D. Assembly will be used in future steps for correct fitting of brackets. (Note: Bracket may-be flipped to accommodate your application.)

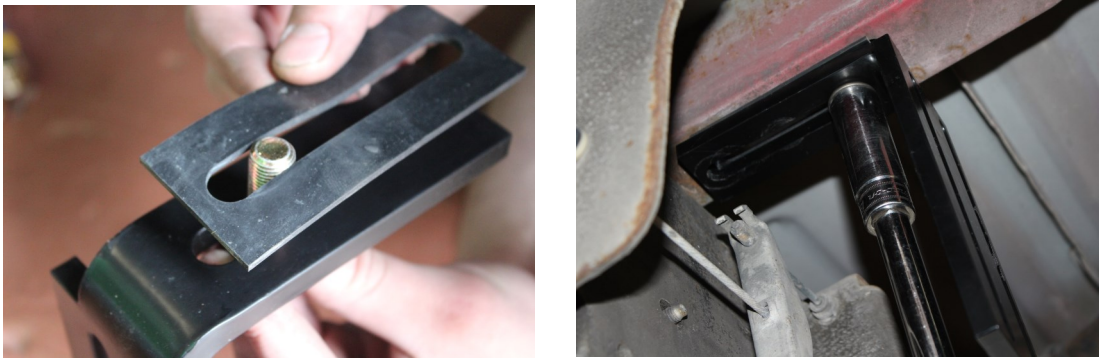


## **STEP 3:** **MOUNT FUEL SYSTEM**

**C.** Assemble PFB-2002C and RS-2001C RS will make contact with bed channel when assembled correctly. Insert the PFB-2002C assembly in to bed channel align the nut with the opening on the channel.



**D.** Secure PFB-2002 and RS-2001 with (1) hex bolt 1/2" -20 x 1 1/2" and (1) 1/2" washer to PFB-2002C

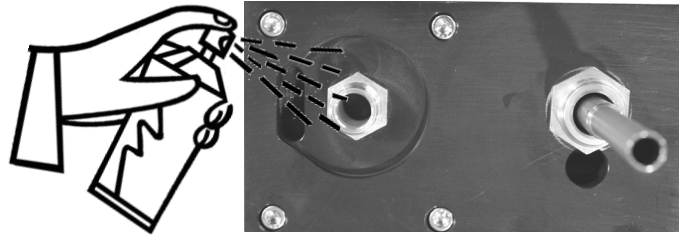


**E.** Disconnect the factory power plug to the HFCM lift pump. Clean plug and install the WE-1006 connector. Plug female plug of the WH-1005-3 harness into FASS pump. **Be sure to finish routing wire harness along frame before mounting into position.**



## **STEP 3:** **MOUNT FUEL SYSTEM**

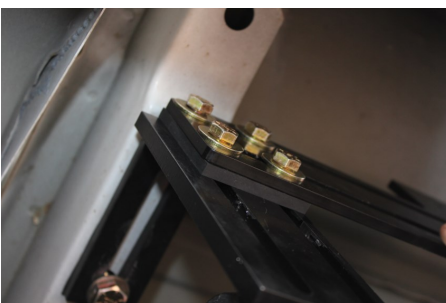
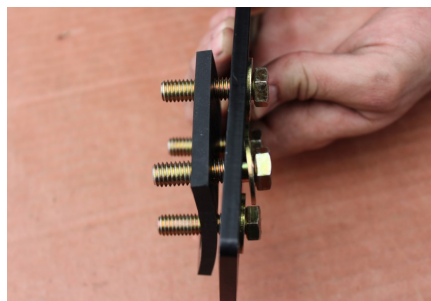
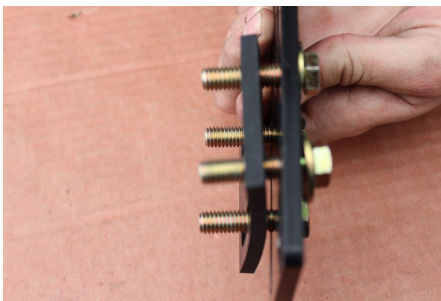
**F.** Turn key to “on”. With pump operating (you may have to bump the starter), turn pump over, liberally spray WD-40 (or equivalent) into water separator nipple lubricating Gerotor.



**G.** Position the PBR-2001 to the PFB-2002 pump assembly at the mounting location and check for fit. Once location is established mark location for mounting in next step.



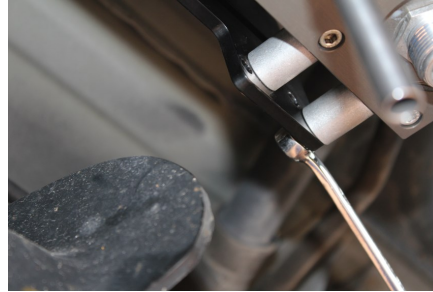
**H.** Assemble the FASS pump bracket PBR-2001 using the RS-2002 spacer between PFB-2002 and PBR-2001 bracket with 4-3/8 bolts, nuts, and washers. Note: Torque bolts not flange nut.





## STEP 3: MOUNT FUEL SYSTEM

- I. Once secure use 3-1 3/4 bolts and 3-WA-1001D spacers to mount the pump to the bracket.



- J. Apply motor oil to gasket located on filters. Attach to system and hand tighten.



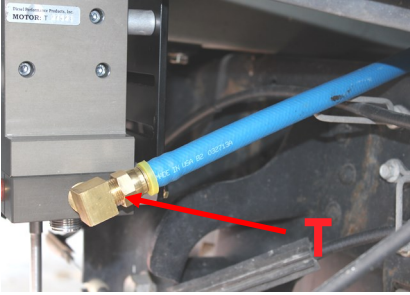
**Fuel Filter -Install  
FF-3003 on side of pump  
with draw tube in the  
middle of the filter nipple.**

**Water Separator Filter -Install FS-1001  
on water separator nipple without the  
draw tube. Make sure to insert O-Ring  
provided on nipple.**

## **STEP 4:** **INSTALL FUEL LINE**

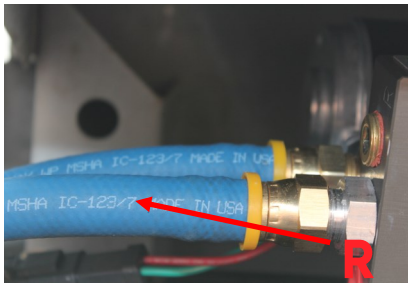
**Caution: DO NOT use sealant on AN fittings**

- A.** Route suction line from the suction tube assy. to port 'T' on the FASS system. Cut FL-1058 to needed length. Insert PL-1058 using oil. Connect to 10-302 in port 'T'. Torque to 18 ft./lbs.



**NOTE: Hose clamps are not recommended for push lock fittings. They will hold up to 300psi! Use oil on fittings and inside fuel line when installing Push-Lok fittings**

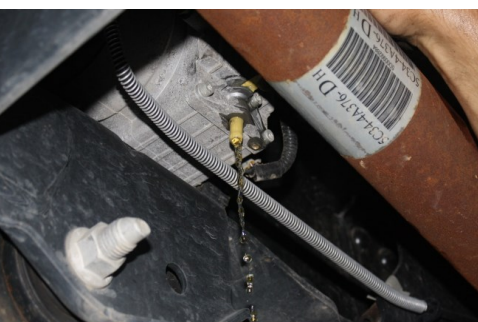
- B.** Route fuel line from the 'R' port of the suction tube assy. to the 'R' port on the FASS system with a gentle bend. Cut and insert PL-1005 using oil. Attach fitting to the 'R' port. Do not use any sealant. Torque to 18 ft./lbs.



- C.** Insert PL-1005 into remaining fuel line using oil. Attach fuel line to the 'E' port of the FASS system. Torque to 18 ft./lbs. Route this line to the engine side of the factory lift pump. Do not cut at this time.



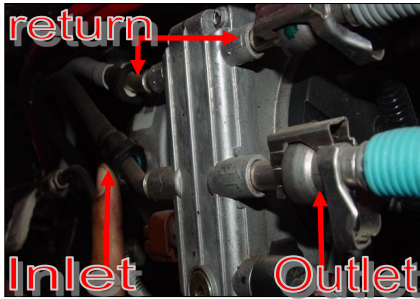
- D.** Bypass factory fuel pump.  
**E.** Drain fuel from factory pump/filter using a 6mm hex drive, turning it counterclockwise.



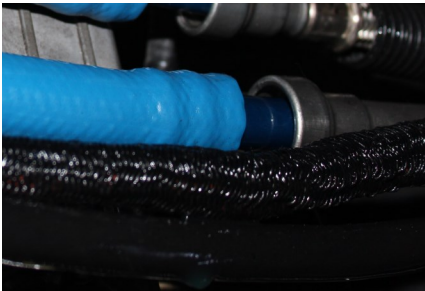


## **STEP 4:** **INSTALL FUEL LINE**

**F.** Using quick disconnect tools, remove the fuel lines from the front of the factory fuel pump. Remove the fuel lines attached to the rear of the factory fuel pump by pressing in on the tabs.



**G.** Route the fuel line from the 'E' port of the FASS to the factory lift pump's outlet quick disconnect and cut to length. Insert the PLB-1212 into FASS fuel line using oil. Slide the PLB-1212 into the factory quick disconnect until you hear a click. Lock down factory retainer clip.



**H.** Measure between the two factory return fittings. Insert two PLB-1238 fittings into the provided FL-1002 fuel line using oil. Insert fuel line into factory quick disconnects until you hear a click. Lock down retainer clip. Secure fuel line.



**Note: Secure all fuel lines with cable ties. Cable ties are an economical way to prevent the possibility of problems occurring!**

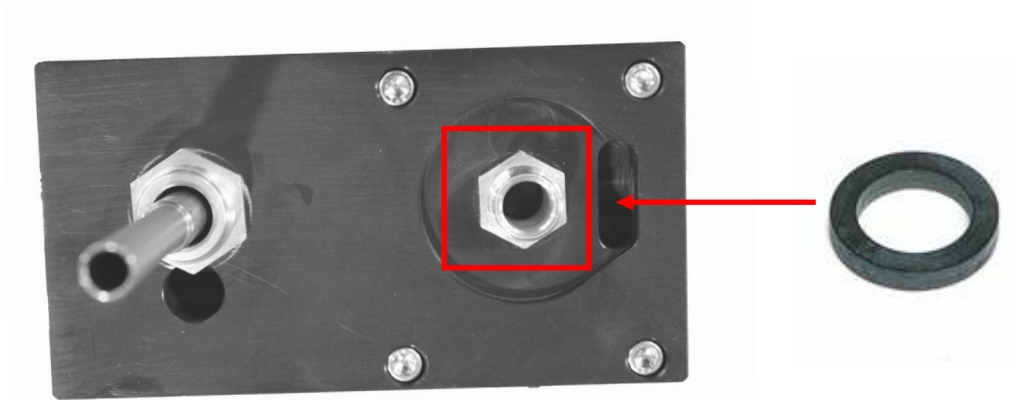
## **STEP 5:** **REVIEW INSTALLATION**

To assist with priming your FASS pump crack the FF-3003. Put power to the FASS pump to activate the pump. When the tone of the pump changes you can tighten up the fuel filter. If you need a video of the priming process go to [www.FASSride.com](http://www.FASSride.com).



Note: The Red Plastic Plugs located in the “H” ports can stay in place fuel will not flow through these ports. Coolant can be plumbed into these ports to heat the fuel in the Winter months.

## **STEP 5:** **REVIEW INSTALLATION**



Note: O-Ring must be put back on suction side of pump. Failure to do so can result in priming issues, cavitation, or pressure losses.

1. Blow out any open lines/cover any open ports
2. Bolts and fasteners properly tightened?
3. Electrical harness and fuel lines secured and properly tightened? Reconnect the battery.
4. Has the system been primed?
  - a. Turn key to the ignition position, turning on the FASS pump for 15 sec..
  - b. Crank engine and allow to run for at least 1 minute.
5. Check for leaks.
6. Start the engine
7. Recheck all fluid and filter connections for leaks
8. This pump comes with a 1 Year Manufacturer's Warranty based on the date it has been manufactured. To receive your extended Lifetime Warranty, you have 30 days from date of purchase to complete warranty information ONLINE at <https://fassride.com/register-a-warranty/>



[www.fassride.com](http://www.fassride.com)

(866) 769.3747

## LIMITATION OF LIFETIME WARRANTY

Disclaimer: To help insure you receive the proper system and customer support at the local level, FASS has a VIP and Authorized Dealer network representing FASS products. This is one reason you must purchase through a dealer to comply with our warranty policies. If you do not, there is no warranty! We recommend you go to [www.FASSride.com](http://www.FASSride.com), click "Find a Dealer", put in their ZIP code, select the type of dealer, and see if the company you purchased from is listed. If they are not, put their phone number in the field below the ZIP code field to see if they are listed. Below these two fields is a list of "Terminated/Unauthorized" dealers. You may want to review this list. If the company is not listed or is on the "Terminated/Unauthorized" list, we suggest you return the product immediately to that dealer and call FASS. We'll recommend you to the nearest dealer.

Diesel Performance Products, Inc. (hereafter "SELLER") gives Limited Warranty as to description, quality, merchantability, fitness for any product's purpose, productiveness, or any other matter of SELLER'S product sold herewith. The SELLER shall be in no way responsible for the product's open use and service and the BUYER hereby waives all rights other than those expressly written herein. This Warranty shall not be extended or varied except by a written instrument signed by SELLER and BUYER.

When MANUFACTURER receives the "ORIGINAL" PRODUCT REGISTRATION form with a copy of the "BILL OF SALE/SALES RECEIPT" within 30 days of the sale, then the following applies! The Warranty will then and only then be validated to that of which typically accompanies your unit for your specific application from the date of sale or for recommended service life and limited solely to the original purchaser and/or vehicle and parts contained within the product's kit. This warranty does not cover normal wear on consumable items such as but not limited to filters, fuel line, wire harness & etc. The warranty does not cover seized gears due to lack of filtration. Warranty is voided if used with other than diesel fuel. Returned items will arrive prepaid to the place of purchase. Diesel Performance Products, Inc. will repair, without cost, any product found to be defective during the warranty period; parts only, or at its option, will replace such products in exchange for the product. Repair or replacements are warranted for the remainder of the original warranty period. All Warranty claims are subject to approval by Diesel Performance Products, Inc.

A Return Material Authorization (RMA) number must be obtained before any product is to be returned to Diesel Performance Products, Inc. for warranty consideration, repair or product return. Requests for product returns must be offset by an equal value order. Return parts must be completed and in resalable condition. No returns after 30 days.

The following information is required to obtain a RMA number before returning product:

Your Name, Address, and Phone Number's

Model and Serial Number (Not Motor Number) Example: Model HD Series, Serial: 00125966 VIN Number of Vehicle

Date of Purchase

Nature of Problem

RMA and Product Serial Number must be on all paperwork and correspondence. Failure to obtain the required information or paperwork will result in \$25.00/item penalty and delay or denial of any warranty claim.

Under no circumstances shall the SELLER and/or MANUFACTURER be liable for any labor charged or travel time incurred in diagnosis for defects, removal, or reinstallation of this product, or any other contingent expenses.

Under no circumstances shall the SELLER and/or MANUFACTURER be liable for any damage or expenses insured by reason of the use or sale of any such equipment. This warranty does not apply to products which Diesel Performance Products, Inc. has determined to have been misused or abused, improperly maintained by the user, or where the malfunction or defect can be attributed to the use of non-genuine Diesel Performance Products, Inc. parts.

IN THE EVENT THAT THE BUYER DOES NOT AGREE WITH THIS AGREEMENT: THE BUYER MAY PROMPTLY RETURN THIS PRODUCT, IN A NEW AND UNUSED CONDITION, WITH A DATED PROOF OF PURCHASE, TO THE PLACE OF PURCHASE WITHIN THIRTY (30) DAYS FROM DATE OF PURCHASE FOR A FULL REFUND LESS SHIPPING.

THE INSTALLATION OF THIS PRODUCT INDICATES THAT THE BUYER HAS READ AND UNDERSTANDS THIS AGREEMENT AND ACCEPTS ITS TERMS AND CONDITIONS.



[www.fassride.com](http://www.fassride.com)  
(866) 769.3747

## ***NOTES:***