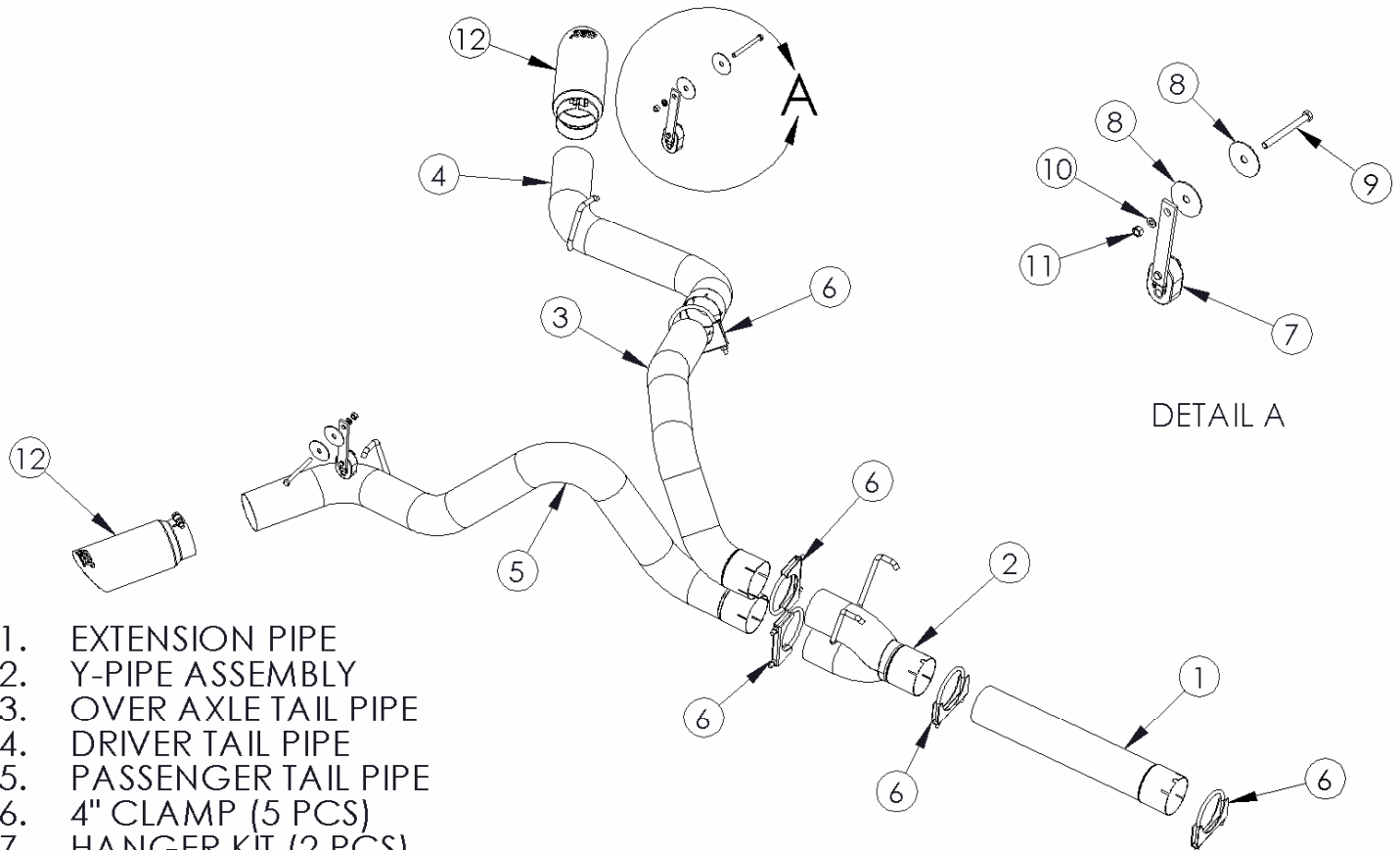


S6122

07-09 DODGE 6.7 L Cummins,2500/3500
Quad Cab / Mega Cab, Particulate Filter
Back "Cool Duals"™

MBRP INC.

PERFORMANCE EXHAUST



DETAIL A

1. EXTENSION PIPE
2. Y-PIPE ASSEMBLY
3. OVER AXLE TAIL PIPE
4. DRIVER TAIL PIPE
5. PASSENGER TAIL PIPE
6. 4" CLAMP (5 PCS)
7. HANGER KIT (2 PCS)
8. 7/16" FENDER WASHER (4 PCS)
9. 3/8" BOLT (2 PCS)
10. 3/8" LOCK WASHER (2 PCS)
11. 3/8" NUT (2 PCS)
12. EXHAUST TIP (2 PCS)

PLEASE READ BEFORE STARTING INSTALLATION

While MBRP Inc. has made every effort to ensure that all components of this system are of superior quality and properly packaged it is the installer's responsibility to ensure the following before removal of the factory exhaust:

- that ALL components shown above are present.
- that ALL mating components fit together.
- that there are no damaged components.
- that the system you have purchased is appropriate for your vehicle year, model and configuration.
- that the system will not interfere with any modifications previously installed or planned.
- that you have read and understand these instructions.

If you have any questions or are uncertain about any aspect of the installation of this system to your vehicle please contact your dealer before commencing installation.

Figure 1

Removal of Stock System:

1. Apply a penetrating lubricant liberally to all exhaust fasteners, hangers and rubber insulators.
2. Loosen the nut on the clamps located behind the particulate filter and behind the muffler using a 15mm wrench or socket. **Refer to Figure 1.**
3. Remove the muffler and tail pipe from the OEM rubber hangers. Remove the stock exhaust from the vehicle. **Refer to Figure 2.**

Figure 2

Installation of MBRP Inc. Performance Exhaust:

1. The **Extension Pipe** provided is used for the Mega Cab short box (76.3" bed) or the Quad Cab long bed (98.3" bed). Slide a **4" Clamp** onto the **Extension Pipe**. If you are installing on a Quad Cab short box (76.3") the **Y-Pipe Assembly** attaches directly to the particulate filter using a 4" Clamp. **Refer to Figure 3.**
2. For Mega Cab short box (76.3" bed) or the Quad Cab long bed (98.3" bed), slide a **4" Clamp** to the single end of the **Y-Pipe Assembly**. Place the hangers on the **Y-Pipe Assembly** into the existing OEM rubber hangers and attach to the end of the **Extension Pipe**. **Refer to Figure 4.**



Figure 3



Figure 4



Figure 5

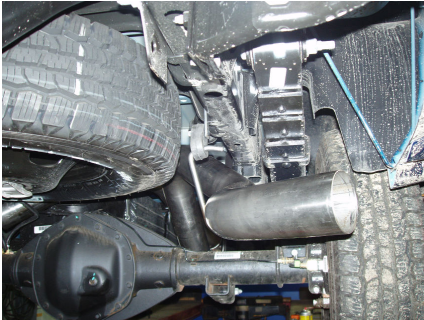


Figure 6



Figure 7



Figure 8



Figure 9

3. Slide a **4" Clamp** onto the lower **Y-Pipe Assembly** outlet. Install the **Passenger Side Tail Pipe** from the rear of the truck, over the axle and attach to the lower section of the **Y-Pipe Assembly**. Refer to **Figure 5**.
4. Install the **Hanger Kit** on the passenger's side of the vehicle directly above the hanger. Using the hardware provided, sandwich the frame between the two **7/16" Fender Washers** to install the **Hanger Assembly**. Install the **Passenger Side Tail Pipe** hanger into the rubber of the **Hanger Assembly**. Adjust for the best axle clearance and tail exit location. Leave the **Passenger Side Tail Pipe** loose enough for adjustment. Refer to **Figure 6**.
5. Slide a **4" Clamp** onto the upper section of the **Y-Pipe Assembly**. Install the **Over Axle Pipe** from the rear of the truck, over the axle and attach to the upper section of the **Y-Pipe Assembly**. Leave the **Over Axle Pipe** loose enough for adjustment. Refer to **Figure 7**.
6. Slide a **4" Clamp** onto the end of the **Driver Side Tail Pipe** then attach to the **Over Axle Pipe**. Refer to **Figure 8**.
7. Install the **Hanger Kit** on the driver's side of the vehicle. Slide the **Driver Side Tail Pipe** hanger into the rubber insulator from the **Hanger Kit**. Adjust for best axle clearance and tail pipe exit location. Refer to **Figure 9**.

MBRP INC.

PERFORMANCE EXHAUST



Figure 10

8. Install and adjust the **Exhaust Tips** to suit. Using a 17mm wrench tighten the lock bolt located on the **Exhaust Tips**. Refer to **Figure 10**.
9. Align the exhaust as required. Starting at the front of the exhaust, tighten all clamps and connections.
10. Carefully reposition any lines to provide clearance to the exhaust.
11. Check along the whole length of the exhaust system to ensure that there is adequate clearance around the spare tire, fuel and brake lines or any wiring. If any interference is detected relocate or adjust.



Congratulations! You are ready to begin experiencing the improved power, sound and driving excitement of your MBRP Inc. performance exhaust system. We are certain you will enjoy your purchase.