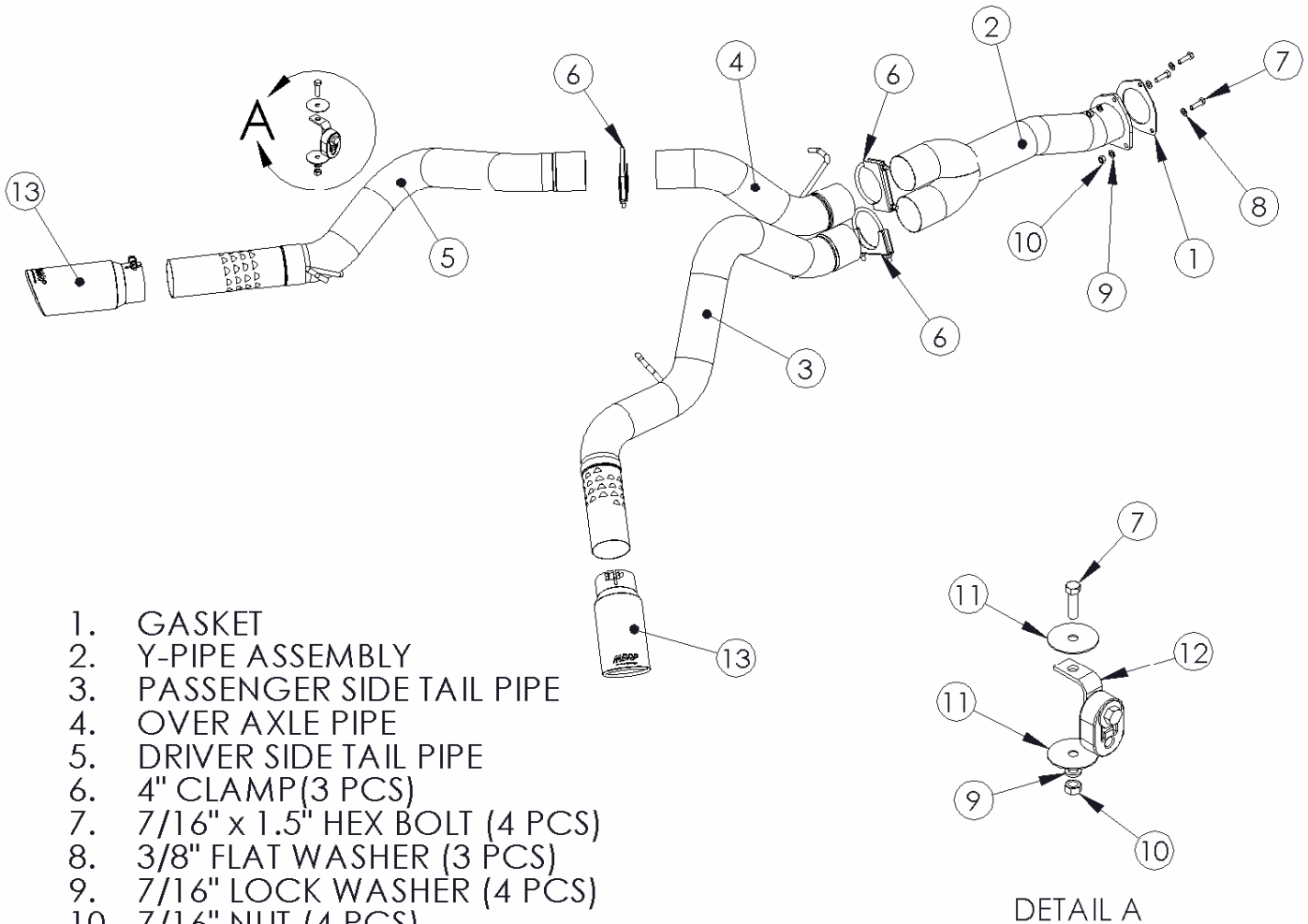


**S6028**

**'07-'10 CHEVY/GMC DURAMAX,  
2500/3500, 4" PARTICULATE FILTER BACK  
COOL DUALS**

**MBRP**  
INC.

**PERFORMANCE EXHAUST**



1. GASKET
2. Y-PIPE ASSEMBLY
3. PASSENGER SIDE TAIL PIPE
4. OVER AXLE PIPE
5. DRIVER SIDE TAIL PIPE
6. 4" CLAMP (3 PCS)
7. 7/16" x 1.5" HEX BOLT (4 PCS)
8. 3/8" FLAT WASHER (3 PCS)
9. 7/16" LOCK WASHER (4 PCS)
10. 7/16" NUT (4 PCS)
11. 7/16" FENDER WASHER (2 PCS)
12. HANGER KIT
13. EXHAUST TIP (2 PCS)

DETAIL A

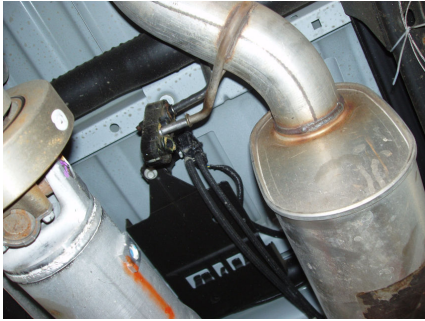
### **PLEASE READ BEFORE STARTING INSTALLATION**

**While MBRP Inc. has made every effort to ensure that all components of this system are of superior quality and properly packaged, it is the installer's responsibility to ensure the following before removal of the factory exhaust:**

- that ALL components shown above are present.
- that ALL mating components fit together.
- that there are no damaged components.
- that the system you have purchased is appropriate for your vehicle year, model and configuration.
- that the system will not interfere with any modifications previously installed or planned.
- that you have read and understand these instructions.

If you have any questions or are uncertain about any aspect of the installation of this system to your vehicle please contact your dealer before commencing installation.

**Removal of Stock System:**



**Figure 1**



**Figure 2**



**Figure 3**

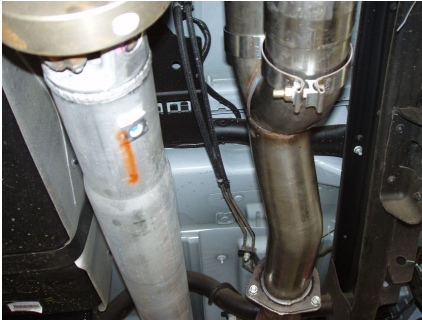


**Figure 4**

1. Apply a penetrating lubricant liberally to all exhaust fasteners, hangers and rubber isolators.
2. Remove the factory tail pipe assembly from the factory rubber isolators. **Refer to Figures 1 & 2.**
3. Cut the factory tail pipe as show and remove the rear section. **Refer to Figure 3.**
4. Remove the three nuts at the muffler inlet flange and remove the muffler. **Refer to Figure 4.**



**Figure 5**



**Figure 6**



**Figure 7**



**Figure 8**



**Figure 9**

## Installation of MBRP Inc. Performance Exhaust:

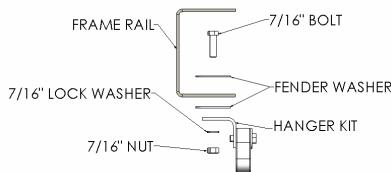
1. Install the three supplied **7/16" Bolts** in the existing flange and the supplied **Gasket** over the **7/16" Bolts**. Refer to **Figure 5**.
2. Install the **Y-Pipe Assembly** on the flange. Note the orientation of the **Y-Pipe Assembly**. The inlet of the **Y-Pipe Assembly** must jog up and towards the driveshaft. Failure to install this pipe correctly will result in the **Tail Pipe** not fitting properly. Secure the **Y-Pipe Assembly** with the three supplied **7/16" Flat Washers**, three of the **7/16" Lock Washers** and three of the **7/16" Nuts**. Refer to **Figure 6**.
3. Slide a **4" Clamp** over both outlets of the **Y-Pipe Assembly**. Install the **Passenger Side Tail Pipe** from the rear of the truck, over the axle and slide on the lower outlet of the **Y-Pipe Assembly**. Install the Tail Pipe hangers into the factory rubber isolators. Refer to **Figures 7 & 8**.
4. Install the **Over Axle Pipe**. The expanded end slides over the upper outlet of the **Y-Pipe Assembly**. Refer to **Figure 9**.



**Figure 10**



**Figure 11**



**Figure 12**



**Figure 13**

5. Slide a **4" Clamp** over the outlet of the **Over Axle Pipe**. Install the **Drive Side Tail Pipe** from the rear of the truck, between the shock and leaf spring, over the axle and slide the expansion over the outlet of the **Over Axle Pipe**. Refer to **Figure 10**.
6. Install the **Hanger Kit** on the frame in the large existing hole as shown. Secure with the supplied **7/16"** hardware in the following order from top to bottom. Refer to **Figures 11 & 12**.
7. Install the **Driver Side Tail Pipe Hanger** into the **Hanger Kit** previously installed in **Step 6**. Refer to **Figure 11**.
8. Install and adjust the **Tips** to your preference. Secure the **Tips** by tightening the 10mm bolt with a 17mm wrench. Refer to **Figure 13**.
9. Align the **Tail Pipes** and tighten **Clamps** starting at the front and working rearward to secure the system.
10. Check along the full length of the exhaust system to ensure there is adequate clearance for fuel lines, break lines, and any wiring, etc. If any interference is detected, relocate or adjust to provide adequate clearance.

**Congratulations!** You are ready to begin experiencing the improved power, sound and driving excitement of your MBRP Inc. performance exhaust system. We are certain that you will enjoy your purchase.