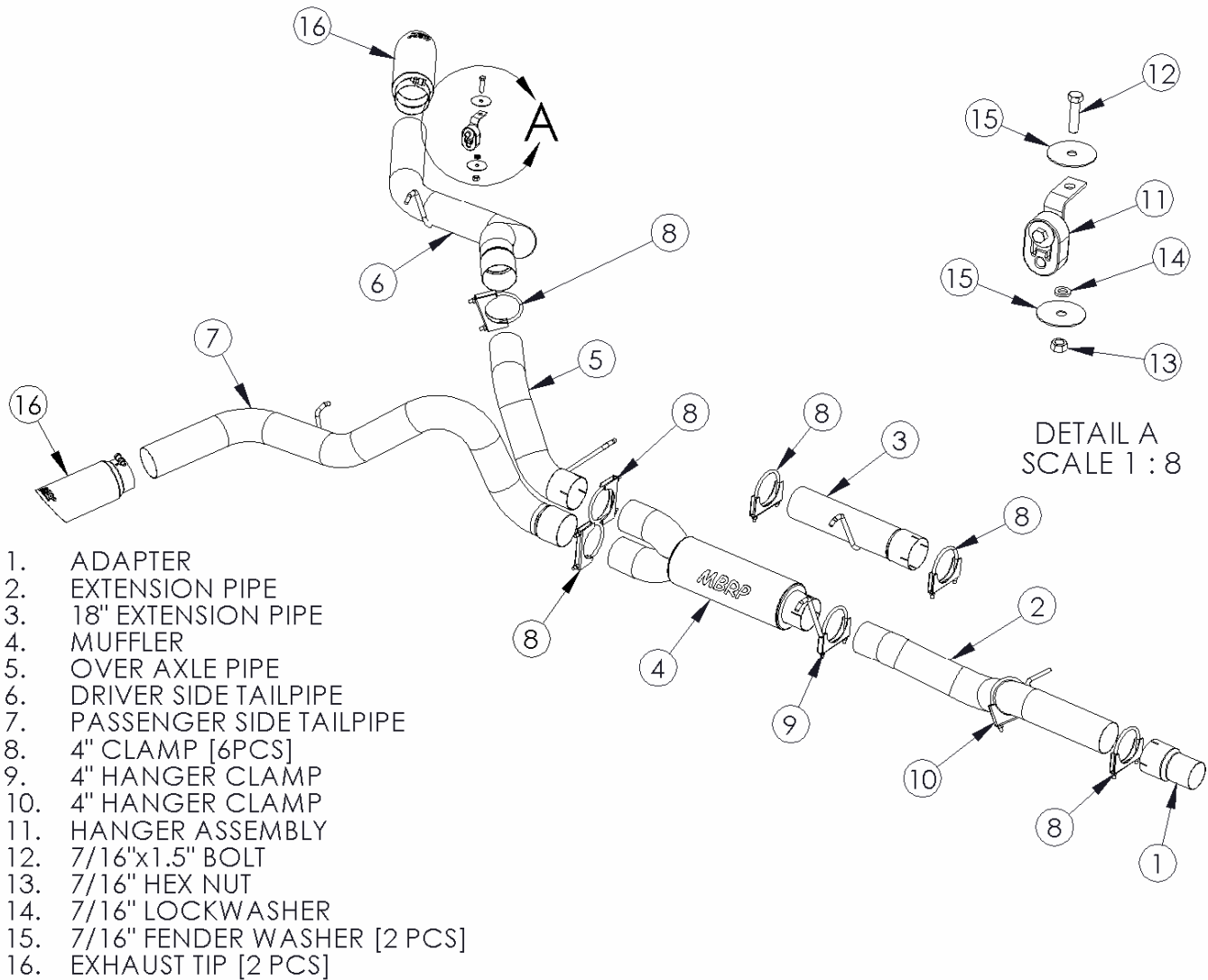


S6014

**06-07 CLASSIC DURAMAX 4" CAT BACK
COOL DUALS™**

MBRP
INC.

PERFORMANCE EXHAUST



PLEASE READ BEFORE STARTING INSTALATION

While MBRP Inc. has made every effort to ensure that all components of this system are of superior quality and properly packaged it is the installer's responsibility to ensure the following before removal of the factory exhaust:

- that ALL components shown above are present.
- that ALL mating components fit together.
- that there are no damaged components.
- that the system you have purchased is appropriate for your vehicle year, model and configuration.
- that the system will not interfere with any modifications previously installed or planned.
- that you have read and understand these instructions.

If you have any questions or are uncertain about any aspect of the installation of this system to your vehicle please contact your dealer before commencing installation.

Removal of Stock System:



Figure 1

1. Apply a penetrating lubricant liberally to all exhaust fasteners, hangers and rubber insulators.
2. Loosen the band clamp behind the catalytic converter and disconnect the factory exhaust system.
3. Remove the exhaust system from the rubber insulators and remove from under the vehicle. If a hoist is not available for use, it may be necessary to cut the tailpipe behind the muffler for removal of the system.



Figure 2

Installation of MBRP Inc. Performance Exhaust:



Figure 3

1. Place the **Adapter** provided into the factory band clamp located behind the catalytic converter. Install the **Extension Pipe** into the **Adapter** placing the bend under and around the cross member. Rotate the **Extension Pipe** to position the bend towards the driveshaft. **See Figure 1**. The **Extension Pipe** does not require cutting to fit crew cab trucks. For extended cab trucks, approximately 9 1/2" needs to be cut off the end with the longest section of pipe. (**Installation tip:** Temporarily hang the **Muffler** and the **Tail Pipe** in place and measure to the **Adapter** to verify the length required).
2. Position the **Extension Pipe** as shown and loosely install the **Hanger Clamp** with the shortest hanger. **See Figure 2**. This will support the **Extension Pipe** during the **Muffler** installation.
3. Crew cab & extended cab long box trucks require the use of the **18" Extension Pipe** provided. This is to be positioned between the **Muffler** and **Extension Pipe**. **See Figure 3**. The **18" Extension Pipe** is not required with short box trucks.
4. Install the **Muffler** onto the **Extension Pipe**. The **Muffler** outlets will be positioned vertically when installed. **See Figure 4**.



Figure 4

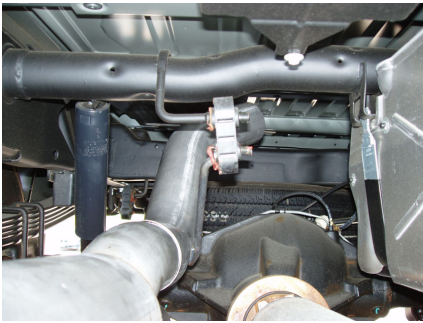


Figure 5



Figure 6



Figure 7



Figure 8

5. Install the **Over Axle Pipe** onto the top outlet of the **Muffler** and install the hanger into the OEM rubber hanger located above the **Muffler**. Adjust for maximum axle clearance. **See Figure 5.**
6. Install the **Driver's Side Tailpipe** by feeding it around the outside of the shock absorber and connecting it to the **Over Axle Tailpipe**. Adjust for maximum clearance around shock absorber. **See Figure 6.**
7. Using the factory hole located in the frame, directly above the tailpipe hanger, attach the **Hanger Assembly** provided using the supplied hardware. **See Figure 7.** Hang the **Driver's Side Tailpipe** from the installed **Hanger Assembly**.
8. Install the **Passenger Side Tail Pipe** from the rear of the truck, over the axle and attach to the lower outlet of the **Muffler**. Install the tailpipe hanger into the OEM hanger and adjust for maximum axle clearance to complete. **See Figure 8.**
9. Install the remaining **Clamps** around the pipes as shown in the opening diagram. Adjust **Driver Side Tailpipe** and **Passenger Side Tailpipe** and check along the whole length of the exhaust system to ensure that there is adequate clearance around the spare tire, fuel and brake lines or any wiring. If any interference is detected, relocate or adjust.
10. Make sure the exhaust is properly aligned before tightening clamps. Start at the front of the exhaust system and begin tightening all connections.
11. Install and adjust **Tips** to suit. Using a 17mm wrench tighten lock bolt located on each **Tip**.

MBRP
INC.
PERFORMANCE EXHAUST



Congratulations! You are ready to begin experiencing the improved power, sound and driving excitement of your MBRP Inc. performance exhaust system. We know you will enjoy your purchase.