



**IMPORTANT WARRANTY & INSTALLATION
INSTRUCTIONS ATTACHED**

*Please Forward All Attached Information to Consumer
Warranty Not Valid Unless Returned to Volant Performance*



**For Full-Color Installation Instructions, Please Visit:
VOLANTPERFORMANCE.COM and Search by Part Number**

Please be sure to review the enclosed instructions prior to beginning the installation process. If you have any questions about the enclosed parts, instructions or encounter a problem during installation:

CALL VOLANT PERFORMANCE TECHNICAL ASSISTANCE AT 909.481.3888

Please take time to read and understand these installation instructions.

Volant recommends that the installation of this system be performed by a qualified service center or professional installer who has the necessary equipment, tools and experienced personnel. However, if you decide to perform this install the use of an additional person may be required.

CAUTION: Never work on a hot engine bay. Allow time for the vehicle to cool.

Recommended Tools:

- Flathead Screwdriver
- Assorted Socket-Set
- Ratchet
- Ratchet Extension

Please confirm that all parts are present according to the bill of materials before beginning the installation.

If something is missing call Tech Support at 1- 800-486-0999

Bill of Materials							
1	Plastic air box	4	¼ x 5/8 rubber washers	2	1/4 Nuts	1	ATS sensor plate gasket
1	Plastic air duct	4	¼ -20 x .50' Truss head screw	2	#64 Clamps	1	Battery tray
1	Air box lid	2	1/4 x 20 Bolts	2.5	4.0in Straight sleeve	1	V Logo
1	Lid gasket	2	¼ Lock washers	1	1/2 Rubber grommet	4	#4 screws
1	5153 Primo filter	2	¼ x 20 Washers	1	ATS sensor plate	40	Vinyl trim sponge



Installation Instructions:

Locate your vehicle's battery and disconnect the negative battery cable, this resets the computer and clears old air flow data to prevent CEL errors.

1. Check all hardware before installing the Volant system, Volant recommends keeping the OEM kit in case the vehicle needs to be returned to stock. **(Fig A)**
2. Disconnect the negative battery cables on both batteries. **(Fig B)**
3. Disconnect both positive battery cables on both batteries. **(Fig C)**
4. Unsnap the driver's side battery cover. **(Fig D)**
5. Remove the Battery cover. **(Fig E)**
6. Using a 5/16 socket or nut driver loosen the battery hold down bolt. **(Fig F)**
7. Remove the battery hold down bracket and bolt. Remove the battery from the engine compartment. **(Fig G)**
8. Remove the filter minder by pulling it straight out of the factory rubber grommet. **(Fig H)**
9. Loosen the clamp holding the duct to the air box. **(Fig I)**
10. Loosen the clamp holding the duct to the turbo inlet pipe. **(Fig J)**
11. Remove the factory air duct. **(Fig K)**
12. Unclip the factory air box top and remove it. **(Fig L)**
13. Remove the filter from the Factory air box. **(Fig M)**
14. Remove the ATS sensor from the back of the air box by twisting and pulling straight out. **(Fig N)**
15. Remove the 2 bolts from the bottom of the air box. **(Fig O)**
16. Remove the 2 bolts holding the air box to the battery tray. **(Fig P)**
17. Remove the factory air box. **(Fig Q)**
18. Remove the 4 - 13mm bolts holding the battery tray in place. **(Fig R)**
19. Remove the factory battery tray. **(Fig S)**

CONTINUED ON NEXT PAGE



20. If equipped remove the factory intake piping from the front of the air box. **(Fig T)**
21. If the vehicle does not have this inlet pipe it can be purchased from your local dealership. **(Fig U)**
22. Remove the plastic bag containing the juke padding material from the fender well. **(Fig V)**

WARNING: Over tightening hardware may alter the integrity of the CORSA air intake system.
23. Press the 23.5 trim sponge onto the fender opening on the Volant box. **(Fig W)**
24. Press the 16.5 trim sponge onto the air duct opening on the Volant box. **(Fig X)**
25. Press the factory intake pipe into the Volant box. **(Fig Y)**
26. Hand tighten the 2 - 1/4 x 20 bolts into the Volant box making sure the nuts are on the inside of the Volant box. **(Fig Z)**
27. Install the Volant system into the factory position. **(Fig AA)**
28. Using the factory 13mm bolts attach the Volant battery tray onto the fender by hand. **(Fig BB)**
29. Using the factory 13mm bolts attach the Volant battery tray onto the wheel well by hand. **(Fig CC)**
30. Tighten the 1/4 x 20 bolts holding the tray to the Volant box. **(Fig DD)**
31. Press the ATS sensor into the Volant box and rotate the sensor a quarter turn. **(Fig EE)**
32. Press the filter minder into the Volant rubber grommet. **NOTE:** The filter minder is no longer functional read care and cleaning instructions below for service information. **(Fig FF)**
33. Place the battery onto the Volant tray. Do not connect the cables at this time. **(Fig GG)**
34. Tighten down the battery in place using the factory hold down bracket and stud. **(Fig HH)**
35. Press the Volant filter into the Volant box. **(Fig II)**
36. Attach the 4 x 2.5in sleeve to the turbo inlet using a supplied #64 clamp. **(Fig JJ)**
37. Slide the Volant duct threw the top of the air box and out of the round hole leaving enough of the duct in the box to attach the filter. **(Fig KK)**
38. Attach the Volant 5153 filter onto the Volant duct. **(Fig LL)**
39. Slide the Volant duct into the sleeve on the turbo ducting. **(Fig MM)**

CONTINUED ON NEXT PAGE



40. Tighten the filter in place using a 5/16 socket or nut driver only. **(Fig NN)**
41. Tighten the Volant ducting to the sleeve with the provided #64 clamp using a socket or nut driver only. **(Fig OO)**
42. Attach the Air box lid using the provided truss screws and rubber washers. **(Fig PP)**
43. Reconnect the battery cables. **(Fig QQ)**
44. Attach the supplied CARB decal in plain sight for visual inspection test. **(Fig RR)**

***Check that this air intake complies with your Federal, State and Local laws. We recommend saving your stock system.**

BEFORE ROAD TESTING

1. Start engine, leaving the transmission in park and securing the parking brake.
2. Make sure to look and listen for any unusual noises or air leaks. Repair problems if needed.
3. Once completed it will be necessary to check periodically, after a few heat cycles, for realignment and tightening of all connections.

CARE AND CLEANING

Check the Pro-5 cotton reusable filter periodically and remove any excessive dirt build-up by tapping the filter on the ground and brushing off the loosened dirt. Clean the filter by using a two stage cleaning kit to thoroughly clean and re-oil the filter. Re-oil every 10,000 miles without cleaning to improve filtering in sand and dirt. Clean only when dirt is very excessive or 50,000 miles.

FOR REPLACEMENT FILTERS REFERENCE #61503 & CALL 440-891-0999 OR TOLL FREE 1-800-486-0999

Installation Pictures



Fig. A



Fig. B

Installation Pictures



Fig. C



Fig. D



Fig. E



Fig. F



Fig. G



Fig. H

CONTINUED ON NEXT PAGE



Installation Pictures



Fig. I



Fig. J



Fig. K



Fig. L



Fig. M

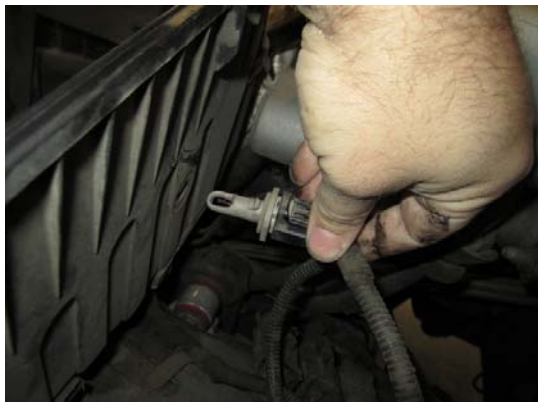


Fig. N

CONTINUED ON NEXT PAGE



Installation Pictures



Fig. O



Fig. P



Fig. Q



Fig. R



Fig. S



Fig. T

CONTINUED ON NEXT PAGE



Installation Pictures



Fig. U



Fig. V



Fig. W



Fig. X



Fig. Y



Fig. Z

CONTINUED ON NEXT PAGE



Installation Pictures



Fig. AA

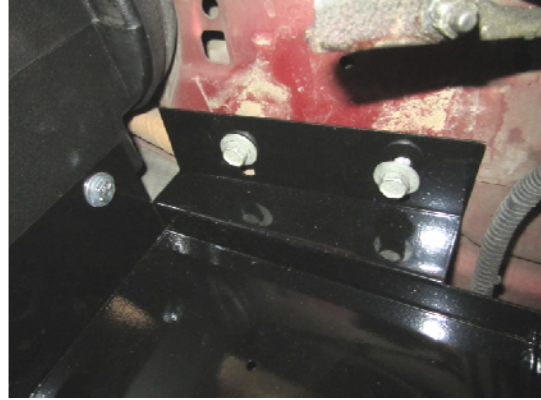


Fig. BB



Fig. CC



Fig. DD



Fig. EE



Fig. FF

CONTINUED ON NEXT PAGE



Installation Pictures



Fig. GG



Fig. HH



Fig. II



Fig. JJ



Fig. KK



Fig. LL

CONTINUED ON NEXT PAGE



Installation Pictures



Fig. MM



Fig. NN



Fig. OO



Fig. PP



Fig. QQ



Fig. RR