



**DOWNLOAD ENHANCED
INSTALL MANUALS AT
*dieselperformance.com***



BD Throttle Sensitivity Button Kit




PN: 1057705

1057705 Application List	1057731 2005-2006 Dodge 5.9
	1057732 2007-2015 Dodge 6.7 / 2011-2015 Ford 6.7
	1057736 2006-2007 GM 6.6
	1057737 2008-2015 GM 6.6
	1057738 2004-2017 GM Colorado/Canyon



This button add-on kit does not work with throttle sensitivity kits other than those listed above. It does not work with staging limiter kits either.

Kit Contents

1301810	1301809	1301813
		
Button Qty: 1	Switch Harness Qty: 1	Switch Decal Qty: 1

2000107	1330052	1330054
		
Button Bracket Qty: 1	Bracket Screws Qty: 2	Double Sided Tape Qty: 1

Introduction

This upgrade kit adds external, on the fly control to the BD Throttle Sensitivity module. This allows the driver to change settings quickly and easily without having to open the module to make adjustments.

This kit also gives the driver more level options. The normal module has two sensitivity levels. This add-on gives the driver three levels of sensitivity and in addition has both a valet mode and a “ludicrous speed” setting.

The valet mode is perfect for modified vehicles as it allows the owner of the vehicle to reduce available power when allowing others to drive their vehicle. The ability to adjust the sensitivity level on the go is also helpful for driving in inclement road conditions where a lower responsiveness may be desired.

Operation

The button has three normal sensitivity levels, 1-2-3 which are selected by simply pressing the button. When no lights are lit, the throttle sensitivity is turned off, the three sensitivity levels are indicated by the three LEDs.



To activate valet mode, press and hold the button for five seconds. All three LEDs will light up. The module will now limit vehicle power until it is taken back out of valet mode. To turn valet mode off, press and hold for another 5 seconds.



To activate "ludicrous speed" mode, press and hold the button for 10 seconds until all of the LEDs begin flashing. To leave this mode, simply press the button once. This mode will turn off by default on the next start for safety.



The module will automatically detect if the button is attached. If the external button is disconnected from the module, it will default to the mode selected on the switch inside the module. The button can be connected or disconnected at any time after the module is installed. If the external switch is connected it will override the internal module switch.

Tools Required for Installation

- Needle nose pliers
- Small screwdriver or pick
- Drill and drill bits

BD Engine Brake Inc.

Plant Address: 33541 MacLure Rd. Abbotsford, BC, Canada V2S 7W2

U.S. Shipping Address: 88-446 Harrison St, Sumas, WA 98295 U.S. Mailing Address: P.O. Box 231, Sumas, WA 98295

Phone: 604-853-6096 | Fax: 604-853-8749 | Internet: www.bd-power.com

Compatibility

The BD Throttle Sensitivity Booster Button add-on is **not** compatible with the first generation of throttle sensitivity modules and is **not** compatible with some early model year vehicles.

Applicable BD Kit Numbers: 1057731, 1057732, 1057736, 1057737



COMPATIBLE

Second Generation Module
PN 1301196



NOT COMPATIBLE

First Generation Module
PN 1301195



Installation

Important: Read the compatibility section above before installing to ensure this button upgrade is compatible with your vehicle and your module.

If adding the button after the Throttle Sensitivity kit has already been installed in the vehicle, turn the ignition switch off. Wait for five minutes to ensure the ECM is turned off and then disconnect the gray plug from the module.

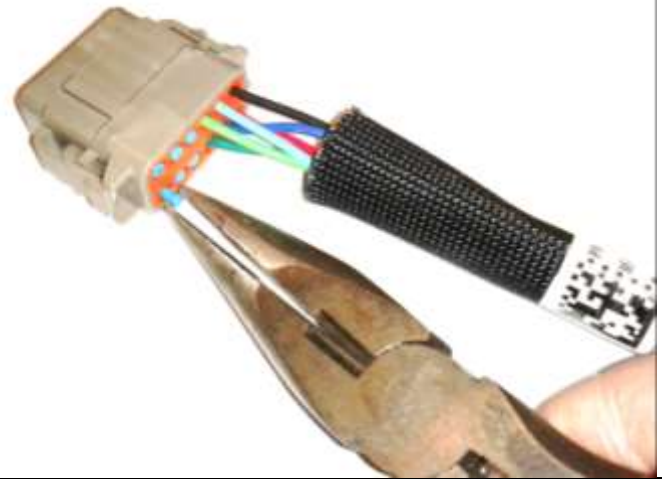
If installing the button for a new installation, locate the gray connector on the throttle pedal harness included with the BD Throttle Sensitivity Booster kit.



Remove the orange lock wedge from the Throttle Sensitivity wiring harness using needle nose pliers.



Remove the small plastic plugs from the back of the connector using needle nose pliers or a small pick and discard them.



Insert the wires from the BD Button wiring harness supplied in this kit into the gray connector according to the chart below.



Button Wire Harness	Gray Module Connector
White wire	Pin # 4
Light Blue wire	Pin # 5
Black wire	Pin # 6
Pink wire	Pin # 7
Yellow wire	Pin # 8
Light Green wire	Pin # 9

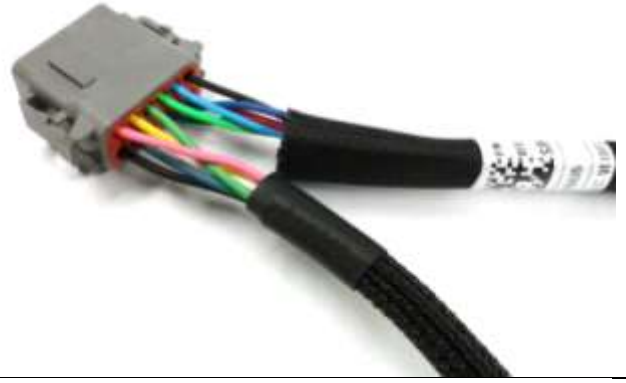
BD Engine Brake Inc.

Plant Address: 33541 MacLure Rd. Abbotsford, BC, Canada V2S 7W2

U.S. Shipping Address: 88-446 Harrison St, Sumas, WA 98295 U.S. Mailing Address: P.O. Box 231, Sumas, WA 98295

Phone: 604-853-6096 | Fax: 604-853-8749 | Internet: www.bd-power.com

Carefully check the terminals are fully inserted and that they do not pull out. Double check that the wire colors are in the correct locations.



Reinsert the orange wedge in the opposite side of the connector by pushing it back in.

Connect the gray connector to the BD Throttle Sensitivity Module.



If the Throttle Sensitivity module has already been installed and the “pedal learn” has been completed, continue to the next step.



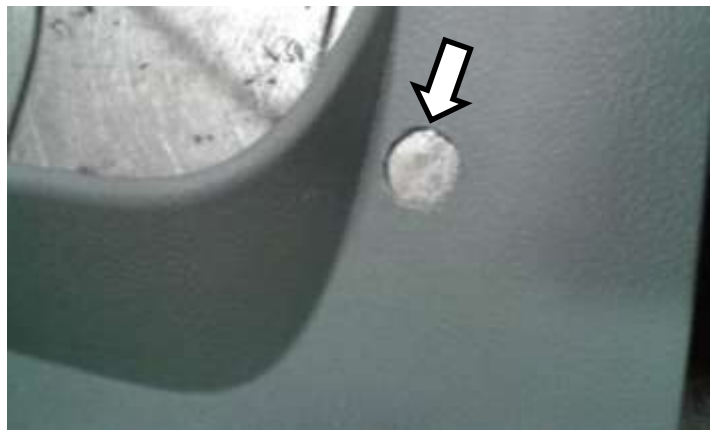
If this button is accompanying a new installation, **DO NOT PLUG THE BUTTON INTO THE BUTTON HARNESS YET.** Proceed with the instructions included with the throttle sensitivity booster kit to setup the module before plugging in the button.

Installing the button or changing the sensitivity level using the internal circuit board switch before completing the “learn pedal” procedure may set an engine fault code.

Route the button harness to the desired location in the vehicle. The button may be mounted in the dashboard by drilling a hole for it, or installed using the supplied button bracket.



If installing in the dashboard, ensure there is space behind the chosen location for the button depth and the wiring connector to be attached. Ensure nothing is behind the chosen location that may be damaged while drilling the dashboard. Create the button mounting hole using an appropriate sized drill bit or a stepped drill bit. Then using a small file, create a notch at the top of the hole for the button locating tab to go. Use the button bracket for reference.



If installing with the supplied bracket, screw the bracket into the bottom of the dash or other desired location before installing the button for access to the screw heads.



Apply the "Throttle Sensitivity" decal to the dash or button bracket, then install the button. To make button installation easier the tabs on the button can be squeezed down while inserting into the dash or bracket using a small screw driver or pick.



BD Engine Brake Inc.

Plant Address: 33541 MacLure Rd. Abbotsford, BC, Canada V2S 7W2

U.S. Shipping Address: 88-446 Harrison St, Sumas, WA 98295 U.S. Mailing Address: P.O. Box 231, Sumas, WA 98295

Phone: 604-853-6096 | Fax: 604-853-8749 | Internet: www.bd-power.com

Connect the button ONLY AFTER the module has been learned to the vehicle.

Using the push button or the internal PCB switch before the module has been learned to the vehicle could result in engine fault codes being set.



Troubleshooting

Button LEDs illuminate in wrong order	Incorrectly wired button. Double check wiring chart on page 5.
Button not working / not detected	Black or Pink wire from button incorrectly installed. Incompatible module - Does not work with PN 1301195.
Only 4 spare pin locations on gray plug	Incompatible kit – Only works on select models. See above.

The “LEVEL” LED on the circuit board will flash every five seconds indicating the sensitivity level. This can be used to diagnose a malfunctioning internal PCB switch or external button. If the external button is connected it will override the internal module switch.

No Push Button – Module internal switch		
STOCK	0%	No flashes
LOW	+50%	1
HIGH	+100%	2

Push Button Attached – Overrides internal switch		
Off (STOCK)	0%	No flashes
Level 1 (LOW)	+50%	1 flash
Level 2	+75%	2 flashes
Level 3 (HIGH)	+100%	3 flashes
Ludicrous	+400%	4 flashes
Valet Mode	Minus 50%	5 flashes