



# Installation Instructions

## Truck Grumper

Product Number: GR4100

Application: 2017 F250-F350

# SAFETY

### Your safety and the safety of others is very important.

- In order to help you make informed decisions about safety, we have provided installation instructions and other information.
- These instructions alert you to potential hazards that could hurt you or others.
- Please do a job safety analysis (JSA) before each task to identify potential hazards for your situation and remove/protect against them.
- You must use your own good judgment, and take your time.

**Read and understand all safety precautions and instructions before installing this product.**

**THIS PRODUCT IS FOR OFFROAD USE ONLY. ALL LIABILITY FOR  
INSTALLATION AND USE RESTS WITH THE OWNER.**

**CARELESS INSTALLATION AND OPERATION CAN RESULT IN SERIOUS INJURY  
OR EQUIPMENT DAMAGE.**

**SENSORS FIELD OF VIEW WILL BE ALTERED WITH USE OF THE  
REPLACEMENT BUMPER.**

# Injury hazard

### Failure to observe these instructions could lead to severe injury or death.

- Always** remove jewelry and wear eye protection.
- Always** use extreme caution when jacking up a vehicle for work. Set emergency brake and use tire blocks. Locate and use the vehicle manufacturers designated lifting points. Use jack stands.
- Always** use appropriate and adequate care in lifting components into place.
- Always** insure components will remain secure during installation and operation.
- Always** wear safety glasses when installing this kit. A drilling operation will cause flying metal chips. Flying chips can cause serious eye injury.
- Always** use extreme caution when drilling on a vehicle. Thoroughly inspect the area to be drilled (on both sides of material) prior to drilling, and relocate any objects that may be damaged.
- Always** use extreme caution when cutting and trimming during fitting.
- Always** tighten all nuts and bolts securely per installation instructions.
- Always** route electrical cables carefully. Avoid moving parts, components that become hot and rough or sharp edges.
- Always** insulate and protect all exposed wiring and electrical terminals.
- Always** perform regular inspections and maintenance on mounts and related hardware.





# Installation Instructions

## Truck Grumper

Product Number: GR4100

Application: 2017 F250-F350

### I. Overview

Congratulations on your purchase of the industries' best and most stylish Ford Super Duty Winch Grumper! This bumper has been **engineered** for strength while keeping the weight down. It can accept the Warn Zeon series winch... and look cool doing it.

This product has also been **engineered** to allow alignment in three directions so you will end up with a very professional fit.

Your bumper was designed in 3-D, fabricated, and powder coated... all in the U.S.A.

Enjoy the fit and finish of a quality Ford Super Duty Winch Bumper from Fab Fours Inc!





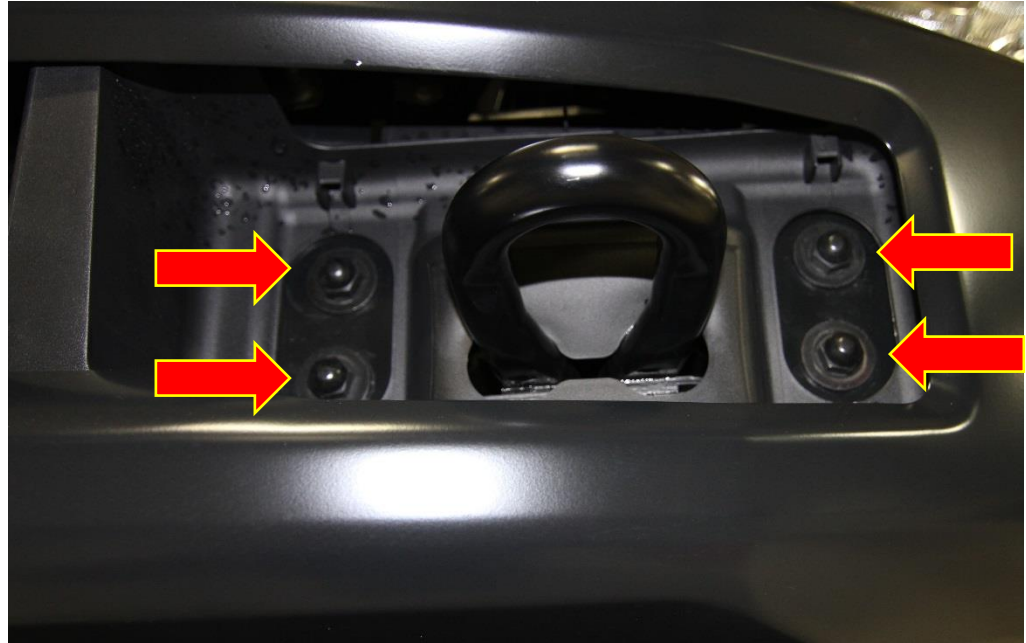
## Installation Instructions

### Truck Grumper

Product Number: GR4100  
Application: 2017 F250-F350

## II. Vehicle Preparation

1. Start by removing four bolts around tow hook on each side of vehicle. This will require an 18mm socket.



2. Next, with the help of someone holding the bumper in place, remove the four 15mm bolts from the bumper supports on both sides of vehicle.

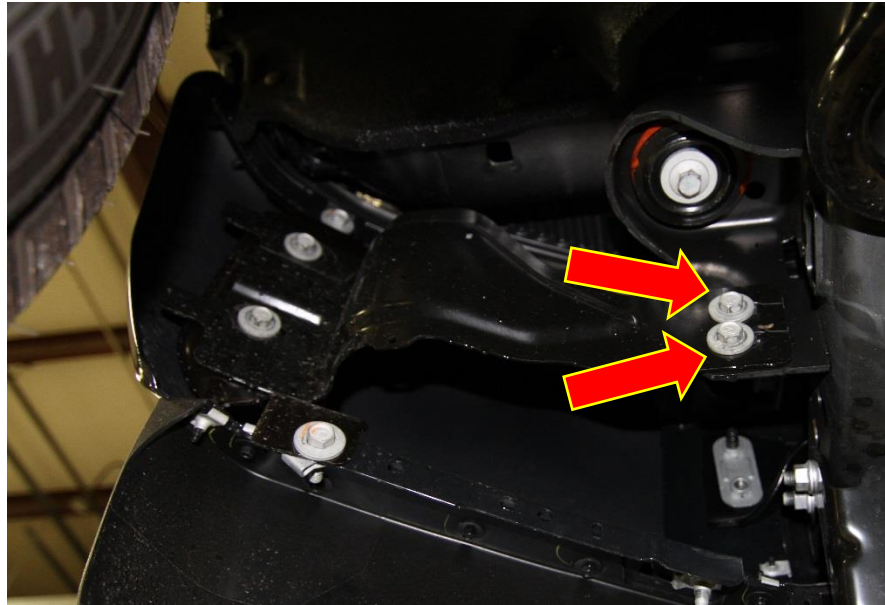




## Installation Instructions

### Truck Grumper

Product Number: GR4100  
Application: 2017 F250-F350



3. The bumper can now be removed. (Be careful when removing bumper if vehicle has a block heater, and or fog lights/adaptive cruise control, as this will have to be unplugged during this step.)
4. With the bumper off the vehicle, you can now remove the tow hooks by removing the four 18mm bolts located under the top of frame rail.



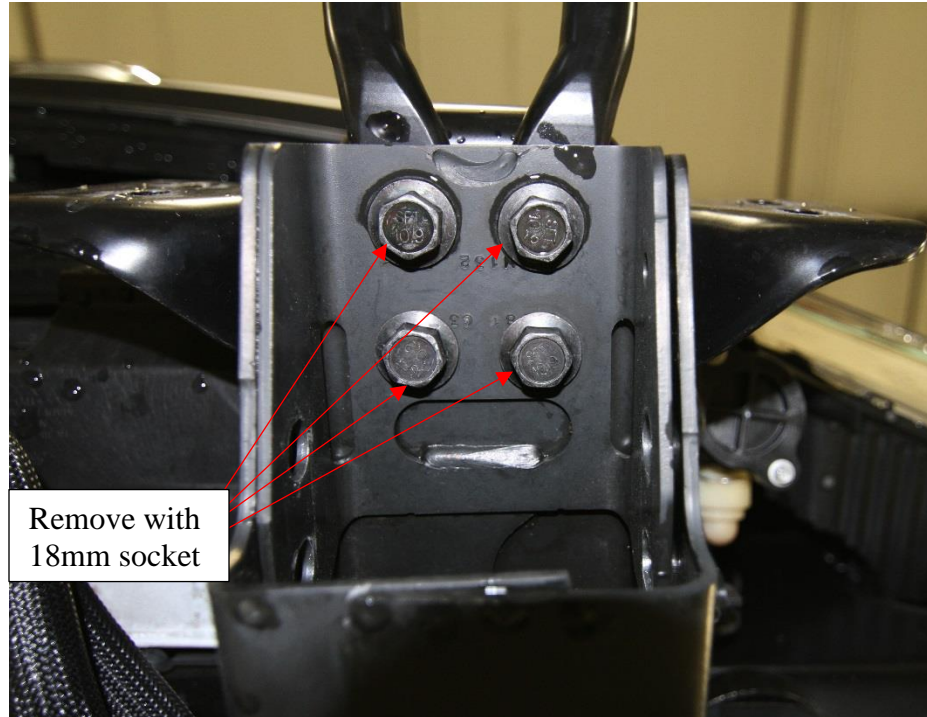


## Installation Instructions

### Truck Grumper

Product Number: GR4100

Application: 2017 F250-F350



5. Next, using 18mm socket remove the two nuts on either side of the frame attaching frame horns to frame. Set bolt strips and nuts aside as they will be used in the installation of Fab Fours Grumper. (See image.)







## Installation Instructions

### Truck Grumper

Product Number: GR4100

Application: 2017 F250-F350



6. Open hood and locate push pins on radiator cover. Using a flat head screw driver, pull the head of the push pins up, remove push pin and lift radiator cover off. This will allow access to top grill bolts.





## Installation Instructions

### Truck Grumper

Product Number: GR4100

Application: 2017 F250-F350

7. Remove the eight bolts attaching the grill to the grill support frame, then pull on the grill to disengage the spring clips at the sides. Using a long flat head screw driver push on the top of the four spring clips at the bottom of the grill (if equipped with camera at this time disconnect the camera and camera washer)



8. If equipped with front camera remove the camera washer Tee from the main washer line and reconnect the main washer line to itself the can be done by pulling up on the black retainer collar.







## Installation Instructions

### Truck Grumper

Product Number: GR4100  
Application: 2017 F250-F350

9. Remove both headlights, there are four M6 (10mm head) bolts holding in each headlight one on the top, two on the front and one below the fender on the outside. Disconnect and set aside for reinstallation. (You may find it helpful to loosen the first fender bolt.)



10. Remove the horns saving the oem hardware. Remove all harness clips from the plastic grill support.





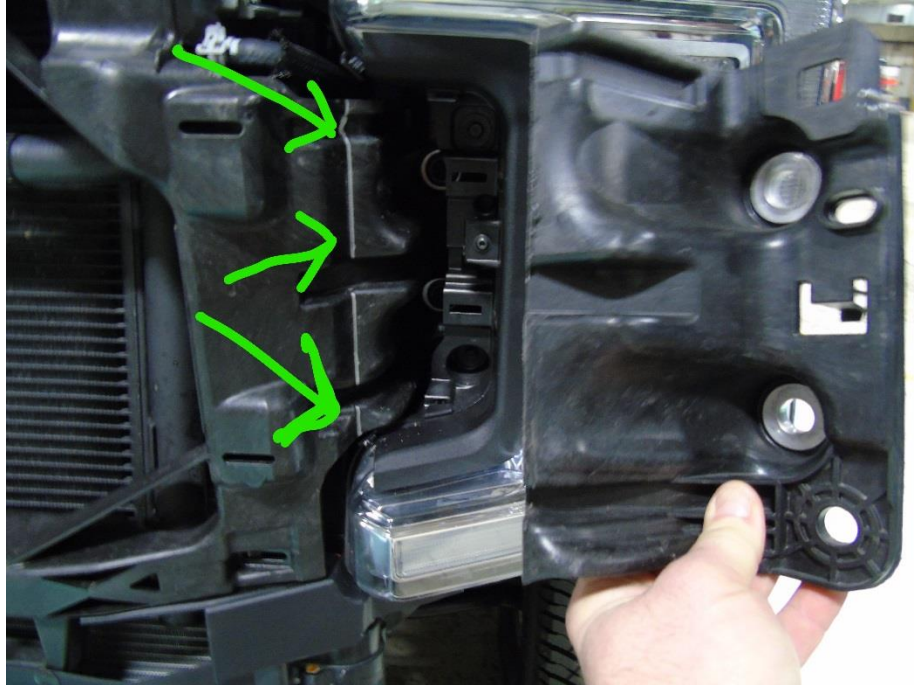


## Installation Instructions

### Truck Grumper

Product Number: GR4100  
Application: 2017 F250-F350

11. Remove the plastic grill support, four bolts 10mm head bolts across the top and four 13mm head bolts on the sides. There are also four push pins along the bottom and one in each top corner.



12. If equipped with a front facing camera in the grill remove it at this time using a torx bit and pulling back on the squirter mechanism.





## Installation Instructions

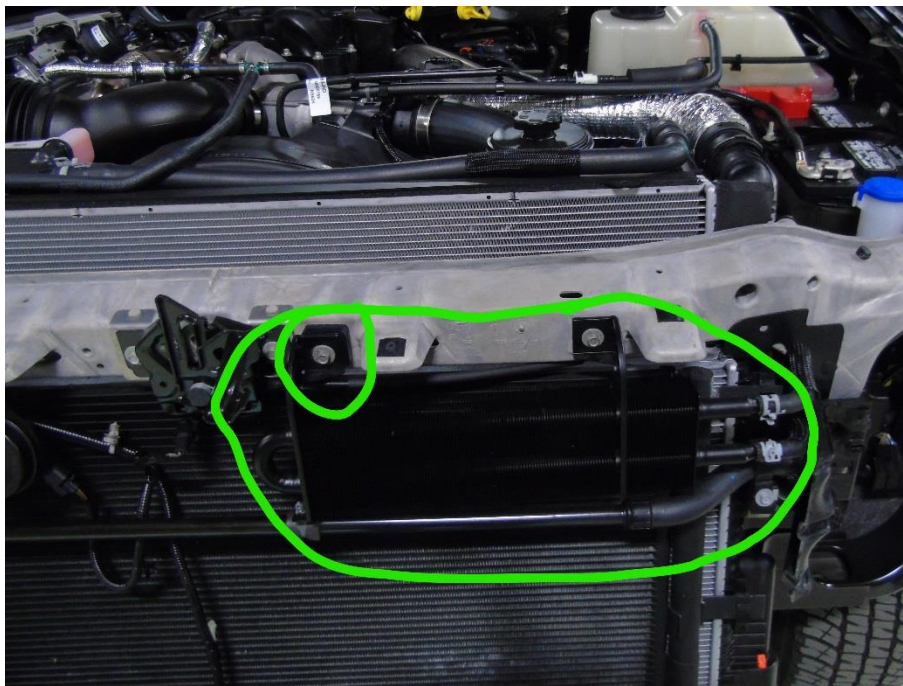
### Truck Grumper

Product Number: GR4100

Application: 2017 F250-F350

### III. PRE INSTALLATION

1. Loosen cooler mounted to core support (10mm head) and install two included spacers behind center of vehicle cooler bracket.



2. Mark using a silver marker the plastic grill support along crease as shown below. After marking on both sides, cut along marked lines.



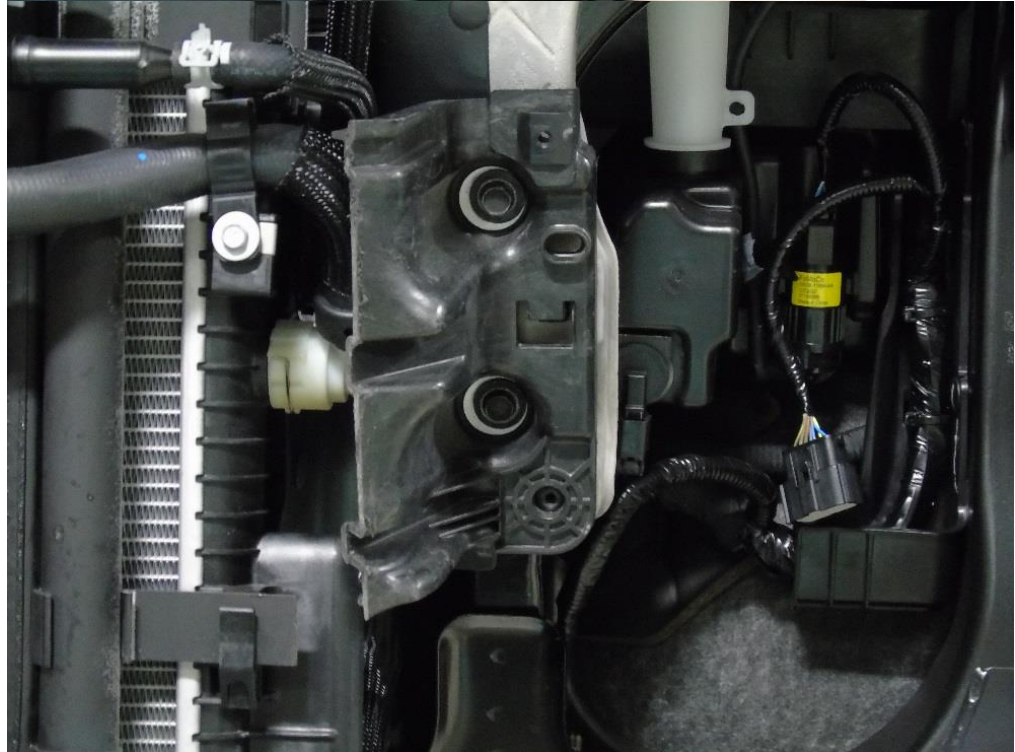
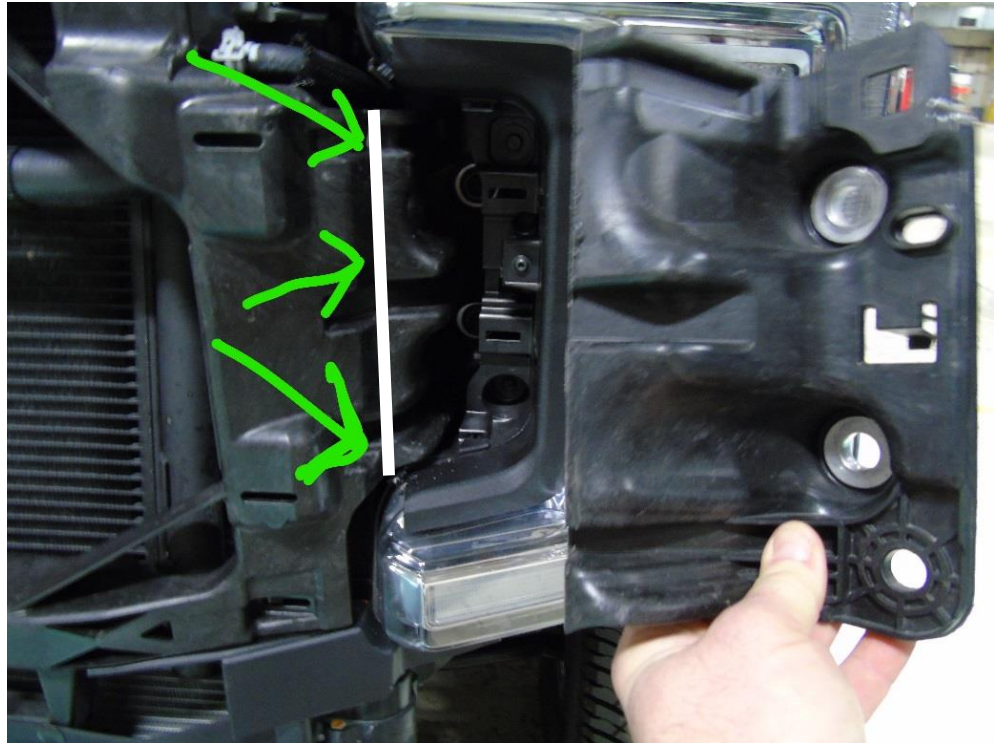




# Installation Instructions

## Truck Grumper

Product Number: GR4100  
Application: 2017 F250-F350







## Installation Instructions

### Truck Grumper

Product Number: GR4100

Application: 2017 F250-F350

3. Reinstall the outer portions of the grill support using indentations left from the original install to align
4. Reinstall headlights
5. Mark the horn bracket as shown. Cut along line. Drill a hole  $\frac{1}{4}$ " in diameter where marked on the dimple.



6. Straighten out remaining bend in horn bracket.





## Installation Instructions

### Truck Grumper

Product Number: GR4100

Application: 2017 F250-F350

7. Install horn using OEM bolt and provided M6 nut to attach the horn to the core support as shown



8. Remove the Grumper parts from the shipping carton. Lay all items out on a blanket to prevent damage to the powder coating

- **Optional:** if installing a winch into the Grumper, do so at this time. Follow the winch manufacturer's instructions for installation. The fairlead can be installed when the center grill assembly is fastened to the winch tray. **THE GRUMPER IS DESIGNED FOR THE WARN ZEON FAMILY OF WINCHES, TO USE ADAPTIVE CRUISE CONTROL THE WARN CONTROL BOX RELOCATION KIT MUST BE USED.**





## Installation Instructions

### Truck Grumper

Product Number: GR4100  
Application: 2017 F250-F350

#### IV. GRUMPER INSTALLATION

1. Center and mount winch tray to the frame of the truck. Use OEM bolt strip on the sides of the frame and the provided M14 hardware on top of the frame. Do not fully tighten





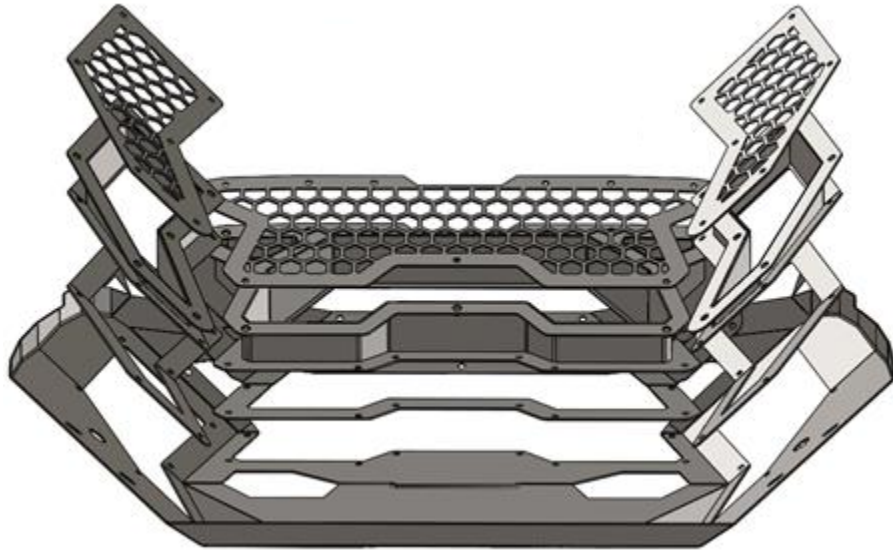


## Installation Instructions

### Truck Grumper

Product Number: GR4100  
Application: 2017 F250-F350

2. Bolt inserts (trim, box, and mesh) into the center grill section. Attach inserts to the center grill using the provided 5/16" stainless steel button head screws, washers, and nuts. Attach the mesh pieces with 3/8" grade 8 hex head bolts.





## Installation Instructions

### Truck Grumper

Product Number: GR4100  
Application: 2017 F250-F350



3. If installing an Adaptive cruise control module install module to the included bracket using the provide M8 nuts. Then install bracket to grill section using the 2 lower center insert 5/16" bolts



4. Install the center grill section onto the truck. Secure it to the core support using the OEM bolts. Fasten the center section to the winch tray with the 7/16" stainless button head screws. If you have a winch, the fairlead should be attached at this time using the bolts provided with the winch. Adjust the center section so that it's





## Installation Instructions

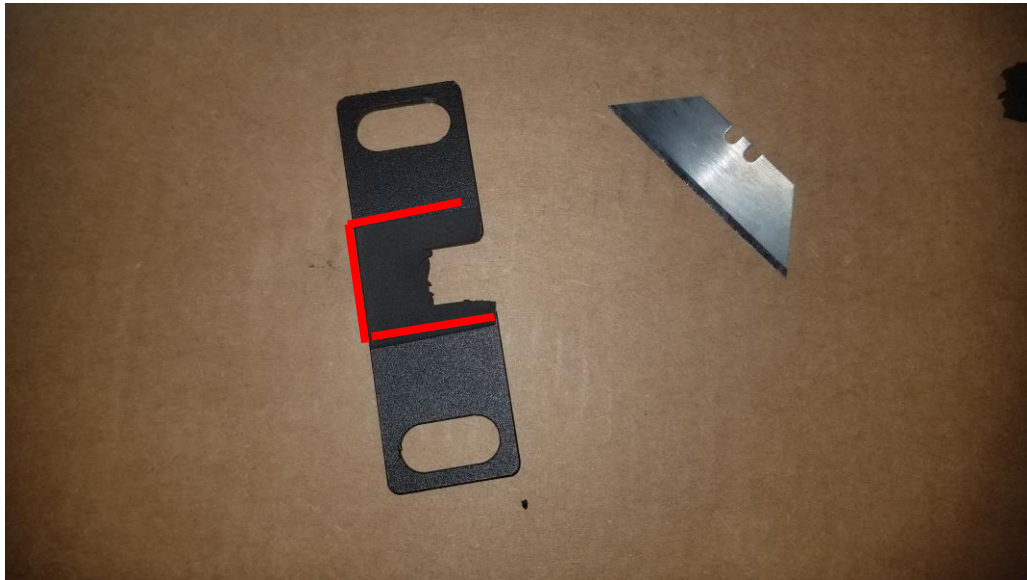
### Truck Grumper

Product Number: GR4100  
Application: 2017 F250-F350

centered on the truck and at the correct height and tighten all fasteners.



5. At this time if you have a front mount camera install in the grumper from this inside as shown. On the hold down bracket install the included foam on the camera side and trim as shown.







# Installation Instructions

## Truck Grumper

Product Number: GR4100

Application: 2017 F250-F350



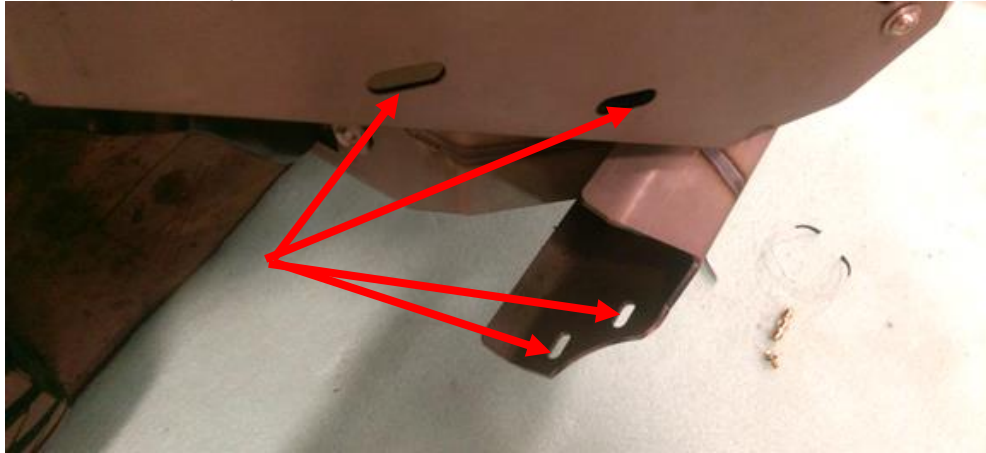


## Installation Instructions

### Truck Grumper

Product Number: GR4100  
Application: 2017 F250-F350

6. Install Wings using 3/8" x 1" (Qty 8) bolts. Each wing will attach to the center section with two bolts and to the winch tray with two bolts.





## Installation Instructions

### Truck Grumper

Product Number: GR4100

Application: 2017 F250-F350

7. Install wing stiffeners using 3/8" x 1.25" (Qty 2) bolts and nuts. The stiffener will attach to the outside of the winch tray mount with the oem studs and to the back of the wing with one bolt.
8. Align the bumper side to side and top to bottom to ensure a perfect fit to the truck. Allow greater than 1/4" of clearance to all painted surfaces if possible. This is to allow for frame flex!
9. If using adaptive cruise control reconnect at this time.
10. Fully tighten all fasteners between bumper and brackets as well as brackets and frame.
11. Adhere supplied badge to front face using locating feature cut into front of grill.
12. Enjoy your New Front Replacement Bumper from Fab Fours!







## Installation Instructions

### Truck Grumper

Product Number: GR4100  
Application: 2017 F250-F350

#### V. Maintenance/Care

- Periodically check and tighten all fasteners.
- Stripped, fractured, or bent bolts or nuts need to be replaced.
- Keep all surfaces free of dirt, road grime, and standing water to ensure finish longevity.

#### VI. Contact Information

Fab Fours Inc.  
2213 Industrial Park Rd.  
Lancaster, SC 29720

Phone (866)-385-1905  
Fax (866)-574-1424  
Email [Support@fabfours.com](mailto:Support@fabfours.com)



More than expected... Better than expected

