



INSTALLATION INSTRUCTIONS

SUBJECT: ALLISON TRANSMISSION COOLER LINES

FPE-2019-26
January, 2019
Page 1 of 5

FITMENT: 2001-2010 CHEVY/GMC (LB7, LLY, LBZ, LMM)

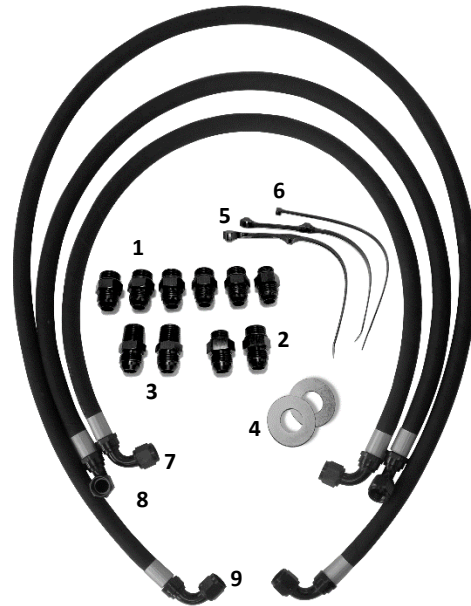
KIT P/N: FPE-TL-LB7-LLY, FPE-TL-LBZ-LMM

ESTIMATED INSTALLATION TIME: 2 Hours

TOOLS REQUIRED: 1" open end wrench

KIT CONTENTS:

Item	Description	Qty
1	7/8"-14 O-ring to -10AN fitting	6
2	3/4" -16 O-ring to -10AN fitting (LB7, LLY only)	2
3	1/2" NPT to -10AN fitting (LB7, LLY only)	2
4	Large OD washer	2
5	Double hose clamp ties (Qty 1 for LB7, LLY)	2
6	Locking cable ties	2
7	Transmission cooler line – 43" (short)	1
8	Transmission cooler line – 50" (medium)	1
9	Transmission cooler line – 72" (long)	1



WARNINGS:

- Use of this product may void or nullify the vehicle’s factory warranty.
- User assumes sole responsibility for the safe & proper use of the vehicle at all times.
- The purchaser and end user releases, indemnifies, discharges, and holds harmless Fleece Performance Engineering, Inc. from any and all claims, damages, causes of action, injuries, or expenses resulting from or relating to the use or installation of this product that is in violation of the terms and conditions on this page, the product disclaimer, and/or the product installation instructions. Fleece Performance Engineering, Inc. will not be liable for any direct, indirect, consequential, exemplary, punitive, statutory, or incidental damages or fines cause by the use or installation of this product.

INSTALLATION INSTRUCTIONS

FPE-2019-26
January, 2019
Page 2 of 5

PROCEDURE:

STEP 1: For trucks with OEM radiators assemble the large flat washers onto two of the 7/8"-14 O-ring to -10AN fittings (items 1 & 4).

- A. Remove the O-ring from the fitting.
- B. Place the large flat washer on the side where you removed the O-ring and replace the O-ring on the fitting.
- C. Install in radiator, removing and replacing one fitting at a time.

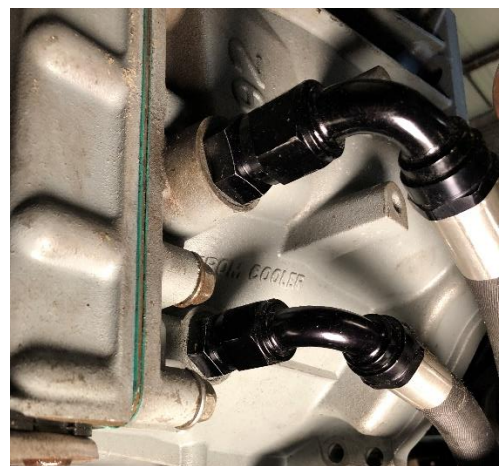
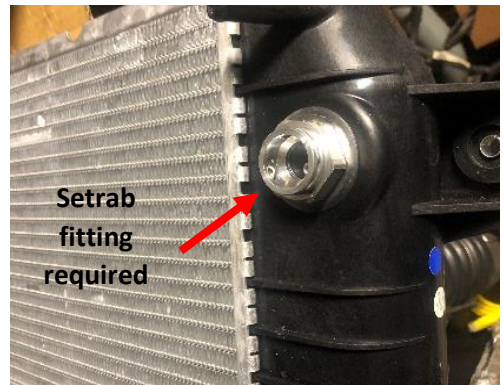
NOTE: Install and remove one fitting at a time on the radiator, removing both fittings at the same time may result in the internal cooler coming loose on the inside of the tank.

NOTE: For trucks equipped with radiators that require Setrab fittings (identified by the presence of a large integral nut on the radiator), use the Setrab to -10AN fittings [Fleece P/N: FPE-TL-ST]. No large flat washer is necessary.

STEP 2: Install each of the fittings in the transmission and front mounted auxiliary cooler.

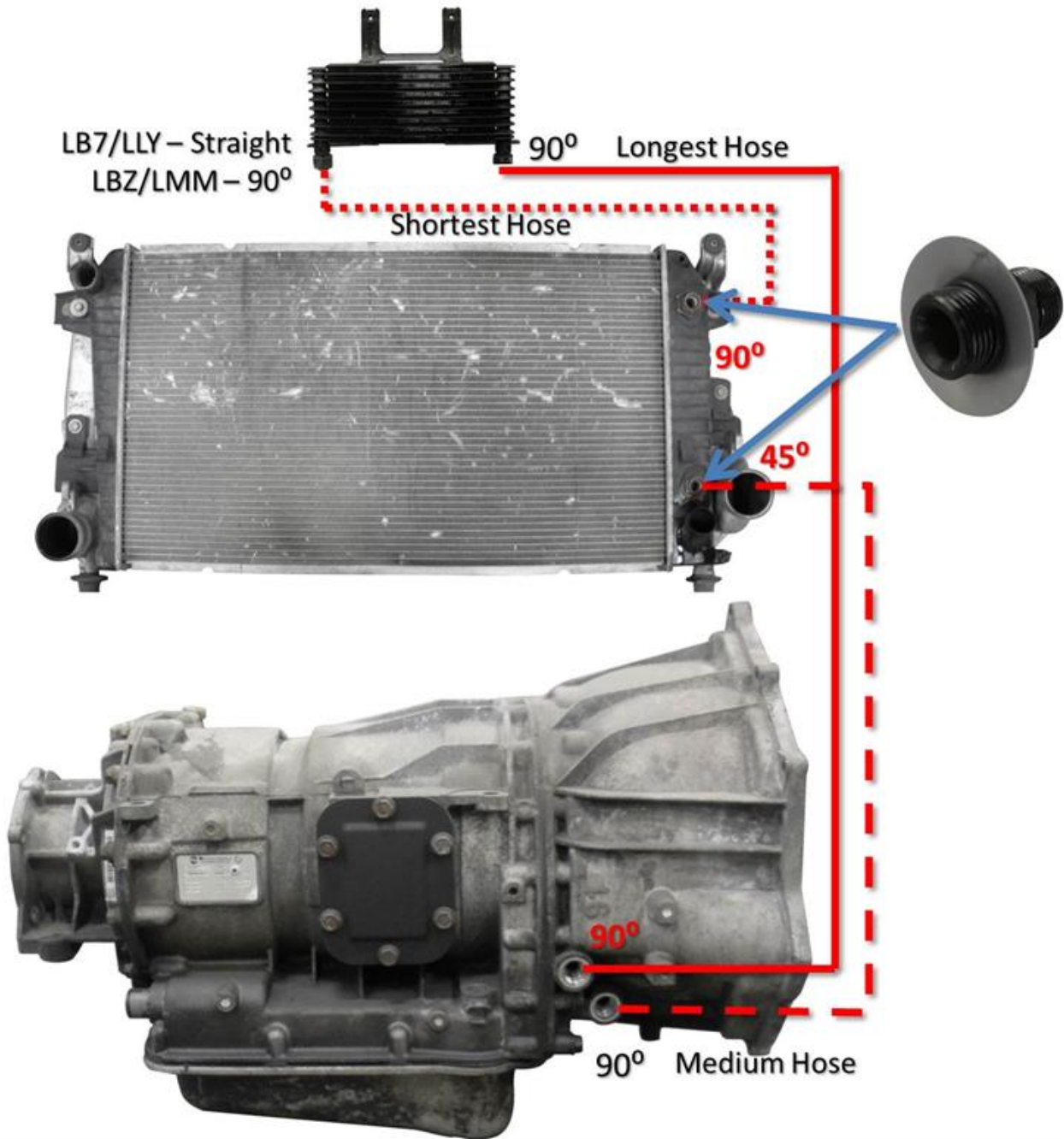
NOTE: For early LB7 trucks with 3/4"-16 ports on the passenger side of the transmission, use the supplied 3/4"-16 O-ring to fittings (item 2). Some LB7-LLY transmission coolers use (2) 1/2" NPT to -10AN fittings (item 3) which are included in the LB7-LLY kits. All other applications use the 7/8"-14 O-ring to -10AN fittings (item 1).

STEP 3: Install the transmission lines according to the figure on page 3 and routings shown on pages 4 & 5. Use the double hose clamp ties (item 5) and zip ties (item 6) to retain the hoses and prevent contact with rotating or high temperature components.



INSTALLATION INSTRUCTIONS

FPE-2019-26
January, 2019
Page 3 of 5



Visit <https://fleeceperformance.com/resources> for the latest instructions and videos.

For Technical Assistance contact Fleece Performance Engineering at 855-839-5040.

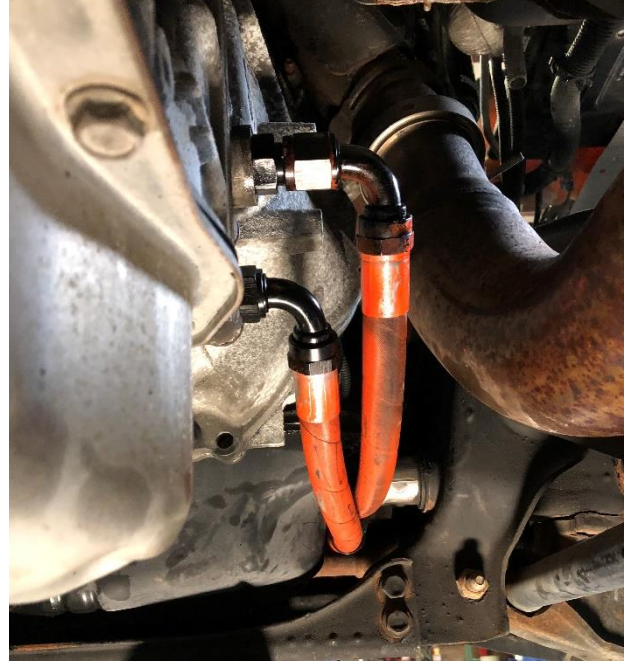
INSTALLATION INSTRUCTIONS

RECOMMENDED LINE ROUTINGS

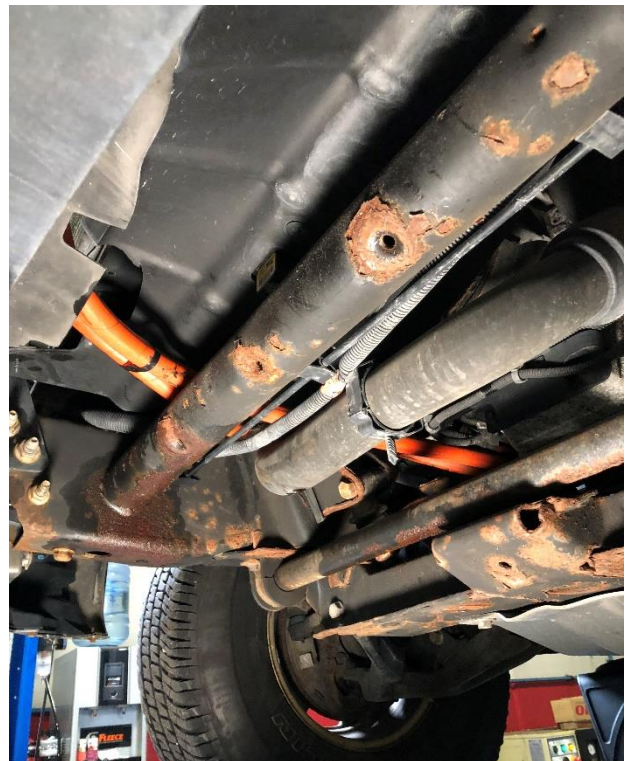
FPE-2019-26
January, 2019
Page 4 of 5

(Lines are painted orange in the pictures for clarity)

Lines should be routed with some droop to reduce any strain on the connections at the transmission. Route the lines along the right side of the engine oil pan, below the split-line. Use the provided dual hose ties to retain the hoses together.



Route the lines uniformly along the left side of the chassis, just inside the frame rails by approximately 6-12”.



INSTALLATION INSTRUCTIONS

RECOMMENDED LINE ROUTINGS

(Lines are painted orange in the pictures for clarity)

FPE-2019-26
January, 2019
Page 5 of 5

The longest line should be routed to the right hand side of the transmission cooler.

The shortest line is routed from the left side of transmission cooler to the top-side radiator fitting – see bottom image.



The medium length hose is routed from the transmission to the bottom-side radiator fitting. The 45 degree fitting is utilized on the radiator side, aligned slightly downward and toward the center of the chassis.

