

2001-2005 (LB7-LLY)
AlliLocker Installation Instructions

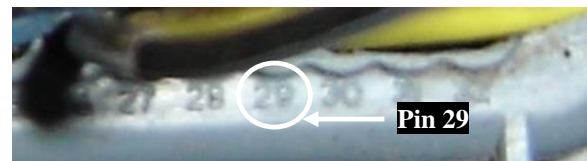
1. Remove the shroud on the radiator that covers the TCM. It is located on the driver's side.
2. Remove the red connector from the TCM. The TCM is labeled RED and GRAY to identify the connectors.



3. Separate the gray backshell of the red connector by pressing the three retaining tabs and opening at the split line.



4. Locate cavity number 29. The wire in cavity 29 controls the Torque Converter Clutch (TCC) and is brown or tan.
5. Cut this wire about 6" from the TCM connector. Strip the ends of the wire back and crimp on the supplied spade connectors. The male spade connector should be crimped on to the end attached to the TCM connector. The female should be crimped onto the vehicle harness end of the brown wire.



6. Connect the AlliLocker harness spade connectors to their appropriate mates on the TCM harness. It will only attach one way. The white wire will connect to the TCM side. The blue wire will connect to the vehicle harness (solenoid) side.
7. Connect the orange wire to 12V Switched Ignition
8. Connect the black wire to Battery Ground

Operation

	State	Function
Bypass Switch	LED OFF (disengaged)	TCC Operation Controlled by the TCM
	LED ON (engaged)	TCC Operation Controlled by the Lock Switch
Lock Switch	Latched (Down)	When Bypass LED is illuminated, TCC is commanded to lock
	Unlatched (Up)	When Bypass LED is illuminated, TCC is commanded to NOT lock



WARNING: This product is intended for closed course race use only. Do NOT use on public roadways.



WARNING: Always disengage the bypass switch and unlatch the lock switch when not in use.