



WARNING!

(MUST READ PRIOR TO INSTALLATION)

I. Water Ingestion Disclaimer:

This product is intended for general highway use only! Under normal driving conditions water ingestion is usually not an issue; however, if the product becomes submerged from rain or puddles due to harsh rains or flooding, the engine may ingest water which could cause severe engine damage. Do NOT use this product when crossing any body of water including but not limited to large puddles, streams, rivers or lakes.

If your engine ingests water, this could cause severe engine damage by hydro-lock or other conditions. Care should be taken to avoid these driving conditions. **ENGINE DAMAGE CAUSED BY THE INGESTION OF WATER INTO THE ENGINE IS THE DRIVER'S RESPONSIBILITY AND IS NOT COVERED BY S&B FILTERS!**

II. Scoop Obstruction:

Regularly inspect the entire Scoop Inlet for any obstruction or debris that may impede the flow of air.

III. Ride Height

Make sure there is plenty space between your tire and the scoop before driving. The scoop system may not work with aftermarket wheels and tires.

IV. Do NOT Seal Off Stock Inlet Location:

In addition to pulling air from the base of the air box, the S&B Cold Air Intake Kit pulls air from the same location as the stock induction system. **UNDER NO CIRCUMSTANCE SHOULD YOU SEAL OFF THIS AIR INLET**. Doing so could result in severe injury or death or damage to the vehicle or property. Sealing off the stock air inlet could cause a significant vacuum should the Scoop become partially or completely obstructed which among other things could pull oil into intake tube leading to an explosion and/or a run-away truck condition as the oil would serve as fuel to the engine.

V. Warranty for Scoop & Filter Wrap

S&B provides a limited warranty to guarantee the product is free of material and workmanship defects. Any product will be replaced upon identification of such defect. Normal wear and tear is not covered under this warranty. Final authorization is at the sole discretion of S&B Filters, Inc.

VI. How long will the Scoop & Filter Wraps Repel Water?

The Scoop & Filter Wraps are specially treated to repel water. The water repellency longevity is dependent upon driving conditions and the number of times the filter is cleaned. Generally speaking, we recommend changing the Filter Wrap every 6-12 months. However, a quick test can determine if it is time to change your Filter Wrap. Simply take an ordinary clean spray bottle filled with water and gently spray the Filter Wrap. If the water beads off the Filter Wrap, your water repellency is still working. If you see water enter through the Filter Wrap, it is time to purchase a new Filter Wrap.



INSTALLATION INSTRUCTIONS

Important: Read warning page prior to proceeding.

VEHICLE APPLICATION

Year: 2006-07
 Make: Chevy (Only)
 Model: Silverado 2500HD/3500
 Engine: 6.6L LLY/LBZ Duramax

* Works only with kit #: 75-5013-1

OE CHEVY BUMPERS ONLY



TOOLS REQUIRED

- 3/8", 1/2" Drive Ratchets and Extensions
- 7/16", 10mm, 13mm, 15mm Sockets
- 10mm, 7/16" Wrenches
- Phillips and Flat Blade Screwdriver

NOTES

Kit may NOT fit with the following:

- Aftermarket Bumper
- Body Lift or Lowering Kit
- Front Hitch
- Oversized Wheels and Tires

BEFORE YOU START

- Please read the entire product guide before proceeding.
- Ensure all components listed on page 5 are present.
- If you are missing any of the components, call our customer support at (909) 947-0015.
- Do not work on your vehicle while engine is hot.
- Make sure the engine is turned off and the vehicle is in Park or the Parking Brake is set.

1. With the ignition switched off and the parking brake set, disconnect the negative battery cable on both batteries.



2. Disconnect the MAF sensor wiring and all hose clamps. Then remove your S&B (or OE) intake kit from the truck.



3. Loosen the 5 screws and remove the air box mounting tray. Retain the two rubber grommets to be used on the new scoop.



4. Remove the wheel liner support plate by removing 3 fasteners. First remove the screw and fastener from outside the wheel liner. The third fastener can be removed easier from inside the engine compartment located on the inner fender.



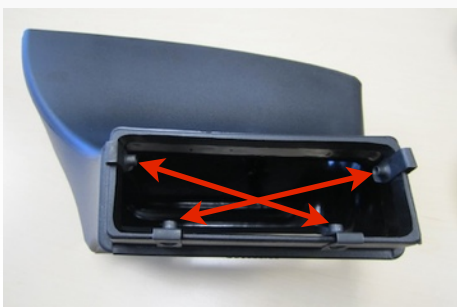
5. Install the Scoop Channel (A) taking the place of the air box mounting tray. Install the 2 OE grommets in the larger holes. Mount up top using the 3 M6x1.0x30mm Screws (E) and 6mm Washers (D).



6. Remove the two bolts from the bumper support bracket using a 15mm socket. Install the Scoop Mounting Bracket (H) using the same two bolts. Leave the bolts hand tight for now.



7. Install the 4 Speed nuts (F) by pushing them down until they clip into the holes on the Scoop Inlet (B).



8. Install the Scoop Inlet assembly up into the Scoop Channel and secure using four 1/4-20x1.0" Screws (G) and 6mm washers (D). Tighten all the mounting hardware when you are satisfied with the position.

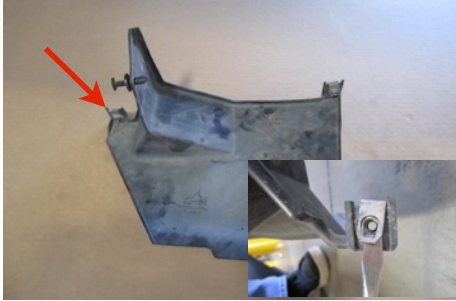


SEE EXPLODED VIEW ON PAGE 5

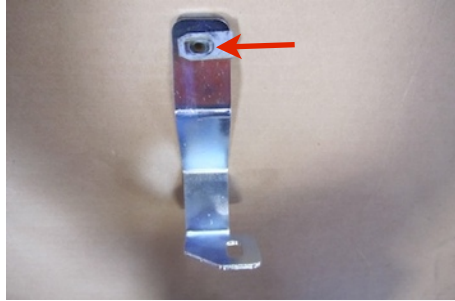


INSTALLATION INSTRUCTIONS (continued)

9. Remove the OE clip nut from the wheel liner support plate using a flat blade screw driver.



10. Attach the OE clip nut to the Fender liner bracket (J) as shown.



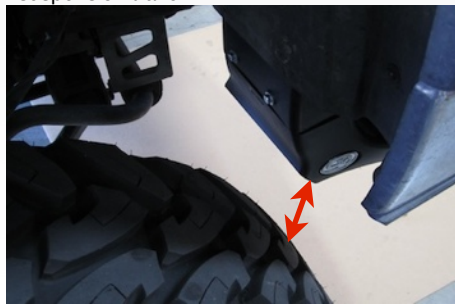
11. From outside the wheel liner, remove the screw attaching the plastic faring to the chrome bumper. Place the Fender liner bracket assembly behind the fender liner and attach using the OE screw.



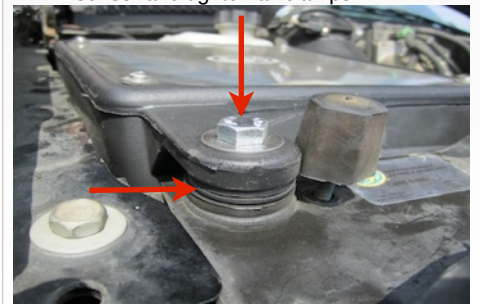
12. Secure the fender liner to the bracket assembly using the screw removed in Step #4.



13. Check to make sure the Scoop assembly does not interfere with the wheel or wheel well liner. Turn the wheel in both directions while trying to simulate full suspension travel.



14. Reinstall the S&B cold air intake kit. Mount the front of the air box using the Washer (K) under the tab and secure using the 3/8-16x2.0" Hex Screw (L). Reconnect MAF sensor and tighten all clamps.



15. Reconnect the negative battery terminals. Inspect the installation, be sure the kit is properly positioned and all fasteners are secure.



Testing and Maintenance

- Engage parking brake and start your engine. Listen for abnormal noises. If an air leak is detected, re-inspect hoses and connections as they may need to be repositioned and tightened.
- **S&B FILTERS recommends that you keep your OE intake system in the event it is required in the future.**
- In order to maintain your warranty, all connections and components must be checked periodically for alignment and for proper tension on all connections. Failure to do so may void your warranty.
- Use only S&B FILTERS cleaning and oil products to service your filter. Using any other brand oil and or cleaners on your S&B air filter will void your warranty.

Air Filter Wrap Use with Oiled or Dry Filters



Order online today at www.sbfilters.com or through your local S&B distributor.
Part #: WF-1023

Water Ingestion Disclaimer:

This product is intended for general highway use only! Under normal driving conditions water ingestion is usually not an issue; however, if the product becomes submerged from rain splashes or mud puddles due to harsh rains or flooding the engine may ingest water which could cause severe engine damage. Do NOT use this product when crossing any body of water including but not limited to large puddles, streams, rivers or lakes.

If your engine ingests water, this could cause severe engine damage by hydro-lock or other conditions. Care should be taken to avoid these driving conditions. **ENGINE DAMAGE CAUSED BY THE INGESTION OF WATER INTO THE ENGINE IS THE DRIVER'S RESPONSIBILITY AND IS NOT COVERED BY S&B FILTERS!**

Ride Height

Once the Scoop has been installed, make sure there is plenty space between your tire and the scoop before driving. The scoop system may not work with aftermarket wheels and tires.

SEE EXPLODED VIEW ON PAGE 5

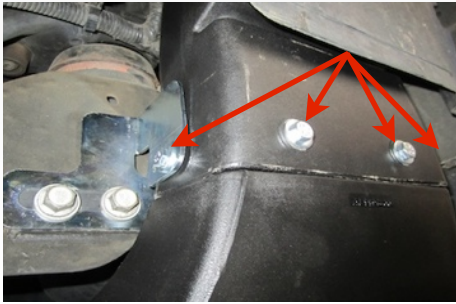


Scoop Plug Installation

When to use the plug.

We recommend installing the plug during the winter months if you in an area that receives snow or excessive rain.

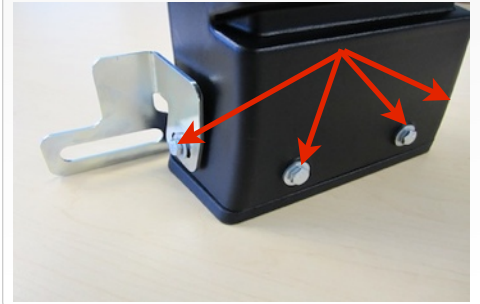
1. From under the truck using 7/16" socket, remove the four 1/4-20 screws and washers attaching the scoop base to the scoop channel. Save hardware for plug installation.



2. Install the four Speed nuts (F) by pushing them down until they clip into the holes on the Scoop Plug (C).



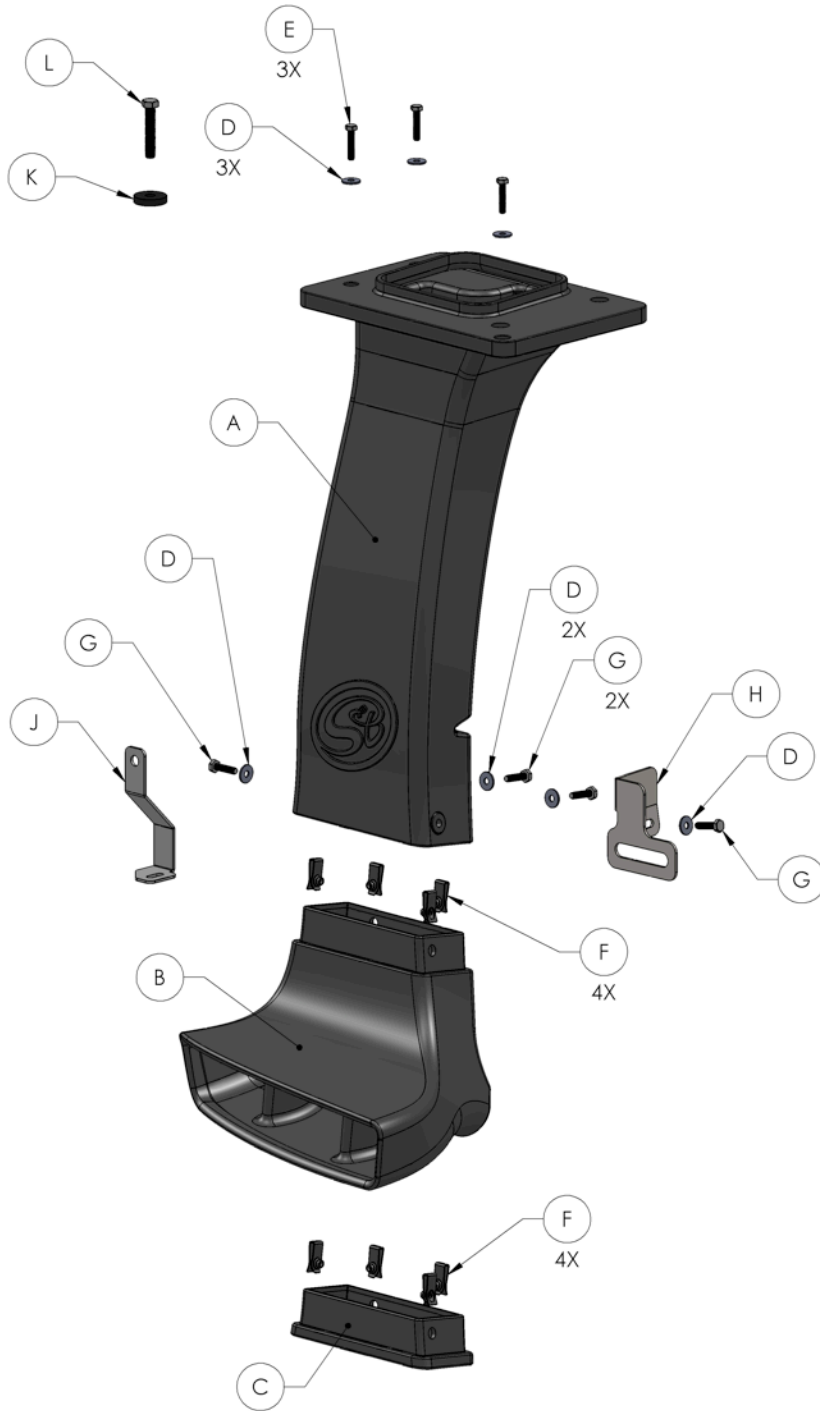
3. Install the Plug (C) into the Scoop Channel re-using the four 1/4-20 Screws (G) and Flat Washers (D).



SEE EXPLODED VIEW ON PAGE 5



INSTALLATION INSTRUCTIONS (continued)



Intake Kit Sold Separately

ITEM	QTY.	DESCRIPTION	P/N
A	1	Scoop, Channel	AL1194-00
B	1	Scoop, Inlet, (Chevy Only)	AL1195-00
C	1	Scoop, Plug	AL1197-00
D	7	Washer, Flat, 6mm	AI1535-00
E	3	Screw, Hex Head, M6x1.0x30mm	AI1414-00
F	8	Nut, Speed, 1/4"-20	AI1059-00
G	4	Screw, Hex Head, 1/4-20x1.0"	AG1131-00
H	1	Scoop Mounting Bracket	AI1583-00
J	1	Fender Liner Bracket	AI1584-00
K	1	Washer, Neoprene, 3/8" ID	AI1603-00
L	1	Screw, Hex Head, 3/8-16x2.0"	AI1602-00

AM0197-00 Rev.A 05/15/13