



INSTALLATION INSTRUCTIONS

VEHICLE APPLICATION

Year: **2004 - 2005**
 Make: **Chevrolet/GMC**
 Model: **2500HD / 3500**
 Engine: **6.6L Duramax "LLY"**

TOOLS REQUIRED

- 8mm, 10mm Socket and Wrench
- T20 Safety Torx
- 5/16" Nut Driver or Flat Blade Screwdriver
- Phillips Screwdriver

S&B FILTER MAINTENANCE

- Cleanable (**KF-1035**). If the enclosed filter is Red, it came pre-oiled from the factory. Please visit www.sbfilters.com for the exact oil amount required after cleaning.
- Disposable (**KF-1035D**). If the enclosed filter is White, it is a disposable filter and should be discarded once it reaches capacity. This filter (**does not require oil**). For more info on S&B's disposable filter, visit www.sbfilters.com.

NOTES

Kit may not fit with the following Aftermarket Parts installed:

- Trucks with Remote Start option
- Body Lift or Lowering Kit
- Custom Hood
- Throttle Body Spacer/ Upgrade

CARB STATUS - PENDING

Product will be submitted to Air Resources Board for approval shortly.

Not Legal for use in CA or other states adopting CA emissions standards"
 See Page 3 for more info.

BEFORE YOU START

- Please read the entire product guide before proceeding.
- Ensure all components listed on page 4 are present.
- If you are missing any of the components, call our customer support at (909) 947-0015.
- Do not work on your vehicle while engine is hot.
- Make sure the engine is turned off and the vehicle is in Park or the Parking Brake is set.

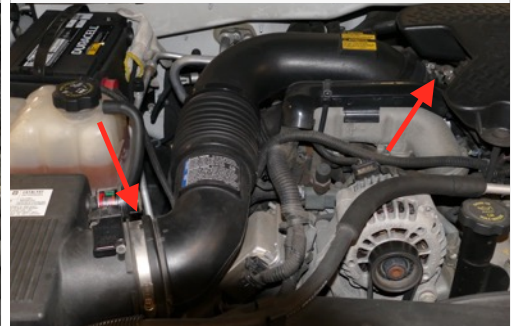
1. With the ignition switched off and the parking brake set, disconnect the negative battery cable on both batteries. **Note: Failure to disconnect the battery may cause the CEL to illuminate upon completion of the installation and subsequent operation. Do not skip this step!**



2. Disconnect the MAF sensor harness.



3. Remove the stock intake tube from the vehicle. Loosen the hose clamp at the turbo and stock intake box with a 5/16 Nut Driver or Flat Blade Screwdriver.



5. Remove the stock intake box by lifting up to unseat the two prongs from the air box tray underneath.



6. Remove the five screws securing the factory air box tray with a 10mm Socket or Wrench.



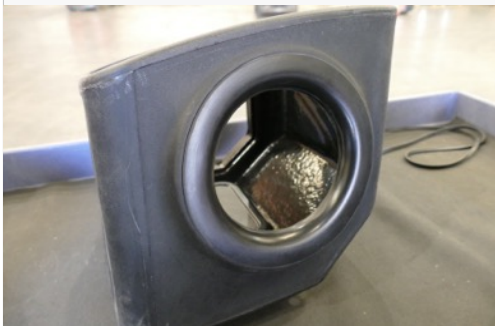
7a. If you haven't done so already, remove the stock foil from the inner fender. This will allow for additional air flow with our kit.



7b. Continue from 7a.



8. Install the Tube Seal (E) onto the Intake Box (A).



9. Install the Fender Seal (F) onto the Intake Box (A).



SEE EXPLODED VIEW ON PAGE 5

INSTALLATION INSTRUCTIONS (CONTINUED)

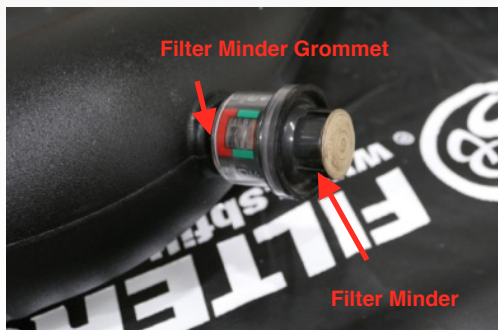
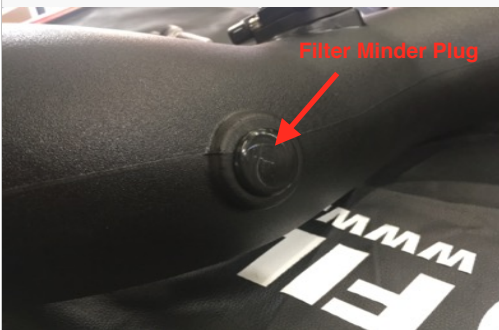
10. Carefully remove the MAF sensor from the stock intake tube with a T20 Safety Torx. Use the provided Foam Gasket (R), MAF Plate (Q), and 8-32 Screws (K) to install the MAF sensor onto the Intake Tube (H) with a Screwdriver. The MAF sensor should be installed in the same orientation as shown below. **Note:** The MAF connector should be facing the coolant reservoir when installed in the vehicle.



11. Slide the Coupler (T) and two #72 Hose Clamps (J) onto the Intake Tube (H). Tighten the hose clamp closest to the tube. Leave the other end loose.



12. Decide whether or not you want to reuse the stock filter minder. Insert the Filter Minder Plug (S) into the Air Tube (H) if you decide to leave the stock filter minder out, otherwise insert the Filter Minder Grommet (P) with the filter minder.



13. Install the Air Box (A) into the vehicle. Secure the air box using the provided M6 Screws (M) and Washers (N).



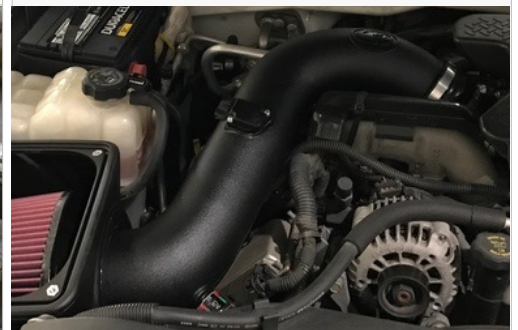
14. Decide to install or leave out the Air Box Plug (G). See "Air Box Plug Testing" on page 3 for more details.



15. Place the Air Filter (D) into the Air Box (A) with Hose Clamp #80 (I). Do not tighten the hose clamp.



16. Insert the Air Tube (H) first into the Air Box (A) and then slide the other end of the Coupler (T) onto the turbo mouthpiece. Tighten the #72 Hose Clamp (M) at the turbo.



17. Slide the Air Filter (D) onto the Air Tube (H) and tighten the #80 Hose Clamp (I).



18. Install the Lid Seal (C) into the Air Box (A) grooves.



19. Remove the protective covering from the Clear Lid (B).



SEE EXPLODED VIEW ON PAGE 5

INSTALLATION INSTRUCTIONS (CONTINUED)

20. Place the Clear Lid (B) on top of the Air Box (A) and secure the lid using the 1/4-20 Screws (O) and Washers (L) with a Screwdriver.

21. Reconnect the MAF sensor harness.

22. Reconnect the negative terminal on both batteries. Inspect your installation, make sure the kit is properly positioned and all fasteners are secure. Affix the CARB and ID label near the intake kit. The installation is now complete.



RELATED ITEMS FOR YOUR PURCHASE



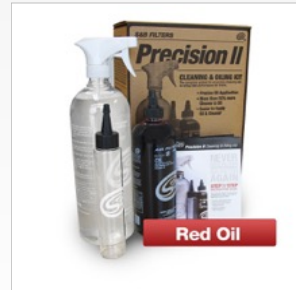
Air Filter Wrap
SKU# WF-1023



Replacement Cotton Filter
SKU# KF-1035



Replacement Dry Filter
SKU# KF-1035D



Precision II: Cleaning & Oil Kit
SKU# 88-0008

Order online today at www.sbfilters.com or through your local S&B distributor.

AIR BOX PLUG TESTING

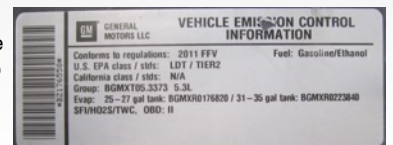
Stock air boxes are a significant contributor to poor air flow which is why S&B designs custom air boxes with secondary and/or enlarged openings. With that said, S&B recognizes the benefits of cooler air, so we have included a plug to seal off the opening if so desired. For optimal performance, we recommend that the intake be used without the end cap except in conditions of extreme heat.

PERFORMANCE TESTING

- Engage parking brake and start your engine. Listen for abnormal noises. If an air leak is detected, re-inspect hoses and connections as they may need to be repositioned and tightened.
- S&B FILTERS recommends that you keep your OE intake system in the event it is required in the future.
- In order to maintain your warranty, all connections and components must be checked periodically for alignment and for proper tension on all connections. Failure to do so may void your warranty.
- Use only S&B FILTERS cleaning and oil products to service your filter. Using any other brand oil and or cleaners on your S&B air filter may void your warranty.

WARNING!

If your vehicle has a Vehicle Emission Control Information decal affixed to the factory airbox, a new replacement label must be obtained and installed in a readily visible position in the engine compartment in order to remain CARB compliant. Failure to do so will prevent the vehicle from passing a smog check. Replacement labels can be ordered from your local dealership. Regulations state that the VECI label shall not be affixed to any equipment which is easily detached from the vehicle. Label placement, under the hood on a painted surface is recommended.



EMISSIONS STANDARD

The California Air Resource Board (CARB) requires that an E.O. identification label be applied to the vehicle in order to pass a smog check inspection when a Performance Intake Kit has been installed. You must place the E.O. label provided on or near the intake kit after installation so that a smog check technician can easily verify the E.O. number. As of April 2009, S&B has never had a product where CARB denied an exemption request; however, the exemption process with CARB can take as long as 18 months. Check the status of the exemption process by looking up a specific part number at www.sbfilters.com. The CARB Exemption number and/or status is listed under the Product Details section for each part number. If the status shows as "Pending," CARB has yet to issue an exemption. Products that have not been issued an EO number are street legal in most states, but may not be used on emission controlled vehicles in the state of California and are for off road use only. If you purchased your kit from S&B Filters directly, we will automatically mail you your Exemption Sticker when it is issued to us. If you purchased your kit from an authorized S&B Filters Dealer, log onto our web site and register to receive your Exemption Sticker.

SEE EXPLODED VIEW ON PAGE 5



EXPLODED VIEW



ITEM	QTY.	DESCRIPTION	P/N	ITEM	QTY.	DESCRIPTION	P/N
A	1	INTAKE BOX	AL1241B-00	L	4	WASHER, RUBBER	AI1571-00
B	1	CLEAR LID	AI1716-00	M	2	SCREW, HEX, M6X1.00X25	AI1415-00
C	1	LID SEAL	AI1766-04	N	2	WASHER, M6	AI1535-00
D	1	AIR FILTER	KF-1035	O	4	SCREW, TRUSS, 1/4-20	AI1684-00
E	1	TUBE SEAL	AI1717C-00	P	1	FILTER MINDER GROMMET	AI1563-00
F	1	FENDER SEAL	AI1723C-00	Q	1	MAF PLATE	AI1722-00
G	1	AIR BOX PLUG	AI1778C-00	R	1	MAF GASKET	AI1777-00
H	1	INTAKE TUBE	AL1285-00	S	1	FILTER MINDER PLUG	AI1705-00
I	1	HOSECLAMP, #80	AG1010-00	T	1	COUPLER	AI1321C-00
J	2	HOSECLAMP, #64	AG1008-00				
K	2	SCREW, PHILLIPS, 8-32X3/4	AI1837-00				