



WARNING!

(MUST READ PRIOR TO INSTALLATION)

I. Water Ingestion Disclaimer:

This product is intended for general highway use only! Under normal driving conditions water ingestion is usually not an issue; however, if the product becomes submerged from rain splashes or mud puddles due to harsh rains or flooding the engine may ingest water which could cause severe engine damage. Do NOT use this product when crossing any body of water including but not limited to large puddles, streams, rivers or lakes. **S&B has conducted extensive water testing with Southwest Laboratories to design a product, which was engineered to protect your vehicle. The testing was done at 700 CFM and according to the SAE J2554, Engine intake Air Water Separation Test Procedure that has been attached and can also be found on our website.**

If your engine ingests water, this could cause severe engine damage by hydro-lock or other conditions. Care should be taken to avoid these driving conditions. **ENGINE DAMAGE CAUSED BY THE INGESTION OF WATER INTO THE ENGINE IS THE DRIVER'S RESPONSIBILITY AND IS NOT COVERED BY S&B FILTERS!**

The table below demonstrates what percentage of the water bypassed the filter during the SAE J2554 Test Procedure.

Standard Scoop Configuration With:	Water Bypassing the Filter, %
Cotton Filter (KF-1035)	0.24
Cotton Filter (KF-1035) & Filter Wrap (WF-1023)	1.34
Cotton Filter (KF-1035), Filter Wrap (WF-1023) & Scoop Wrap (WF-1028)	0.044
Dry Filter (KF-1035D), Filter Wrap (WF-1023) & Scoop Wrap (WF-1028)	0.036

Visit www.sbfilters.com to see the entire Test Report and learn more about this product.

II. Scoop Obstruction:

Regularly inspect the entire Scoop Inlet for any obstruction or debris that may impede the flow of air.

III. Decreased Ride Height

Once the Scoop has been installed, please be aware that the Scoop sits lower than the bumper and drive accordingly to avoid damage to the scoop or vehicle. Make sure there is plenty space between your tire and the scoop before driving. The scoop system may not work with aftermarket wheels and tires.

IV. Do NOT Seal Off Stock Inlet Location:

In addition to pulling air from the base of the air box, the S&B Cold Air Intake Kit pulls air from the same location as the stock induction system. **UNDER NO CIRCUMSTANCE SHOULD YOU SEAL OFF THIS AIR INLET.** Doing so could result in severe injury or death or damage to the vehicle or property. Sealing off the stock air inlet could cause a significant vacuum should the Scoop become partially or completely obstructed which among other things could pull oil into intake tube leading to an explosion and/or a run-away truck condition as the oil would serve as fuel to the engine.

V. Warranty for Scoop & Filter Wrap

S&B provides a limited warranty to guarantee the product is free of material and workmanship defects. Any product will be replaced upon identification of such defect. Normal wear and tear is not covered under this warranty. Final authorization is at the sole discretion of S&B Filters, Inc.

VI. How long will the Scoop & Filter Wraps Repel Water?

The Scoop & Filter Wraps are specially treated to repel water. The water repellency longevity is dependent upon driving conditions and the number of times the filter is cleaned. Generally speaking, we recommend changing the Filter Wrap every 6-12 months. However, a quick test can determine if it is time to change your Filter Wrap. Simply take an ordinary clean spray bottle filled with water and gently spray the Filter Wrap. If the water beads off the Filter Wrap, your water repellency is still working. If you see water enter through the Filter Wrap, it is time to purchase a new Filter Wrap.



INSTALLATION INSTRUCTIONS

Important: Read warning page prior to proceeding.

VEHICLE APPLICATION

Year: 2003-09
Make: DODGE
Model: RAM 2500/ 3500
Engine: 5.9L / 6.7L DIESEL
(Standard chrome bumper only)

STANDARD CHROME BUMPER ONLY



TOOLS REQUIRED

- 8mm Socket
- 18mm Wrench & Socket
- 7/16" Wrench & Socket
- Pliers

NOTES

- Kit may not fit with the following:
- Painted or Aftermarket Bumper
 - Aftermarket Parts installed
 - Body Lift or Lowering Kit
 - Custom Hood
 - Oversized Wheels and Tires

BEFORE YOU START

- Please read the entire product guide before proceeding.
- Ensure all components listed on page 3 are present.
- If you are missing any of the components, call our customer support at (909) 947-0015.
- Do not attempt to work on your vehicle while engine is hot.
- Make sure the engine is turned off and the vehicle is in Park or the Parking Brake is set.

1. Using a 8mm socket locate and remove the (8) screws from the wheel well liner.



2. Using a pair of pliers, push the pin attaching the wiring harness to the inside. Then remove the wheel well liner from vehicle by pushing it in and then down to remove.



3. While supporting the scoop base remove the four 1/4"-20 screws attaching the scoop base to the scoop channel. Retain all the hardware.



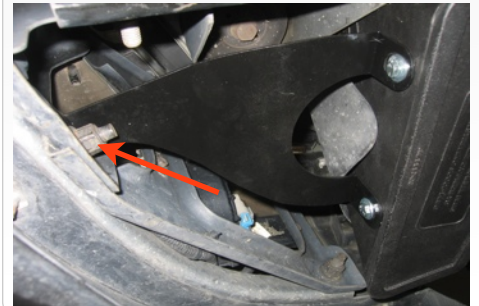
4. From under the truck, remove the two nuts behind the bumper on either side of the frame using a 18mm socket. Slide the mounting brackets off the studs and remove the scoop base.



5. Insert the Scoop plug (A) into the scoop channel. Then attach the "L" bracket (B) to the scoop channel using two of the 1/4"-20 screws and washers removed in step #3.



6. Mount the front tab of the "L" bracket to the stud on the bumper using the 18mm nut. Tighten down both 18mm nuts to the back side of the bumper to the OE torque specs.



7. Reinstall the two 1/4"-20 screws and washers to the back of the scoop channel. Double check to make sure all hardware is secure and the system is properly positioned.



8. Reinstall the wheel well liner using the (8) screws that were removed in step #2. Make sure all of the screws are started before tightening them down.



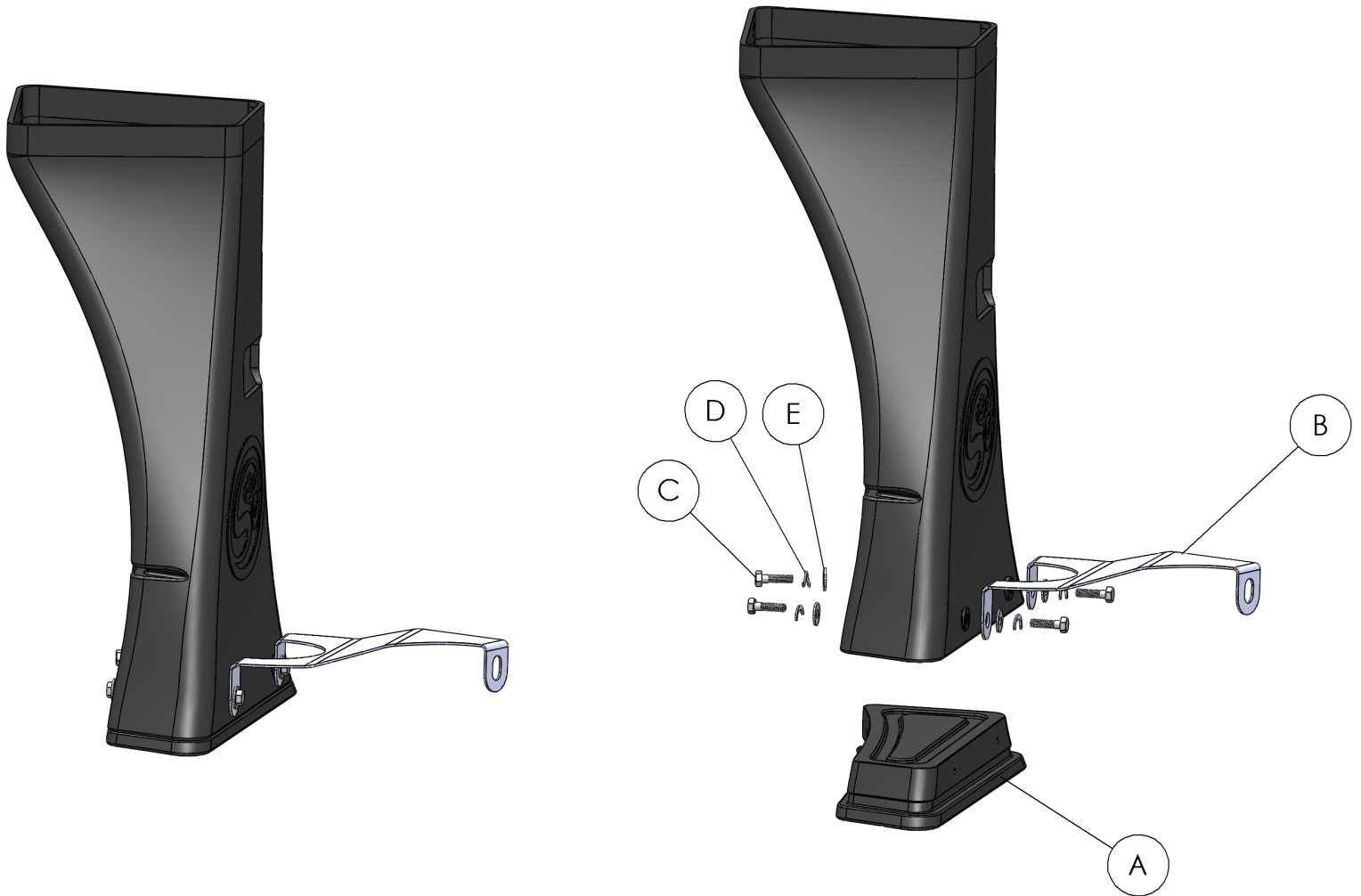
9. Push in the pin that was removed in step #2 from inside the engine compartment. Inspect the installation, be sure the kit is properly positioned and all fasteners are secure.



SEE EXPLODED VIEW ON PAGE 3



EXPLODED VIEW



ITEM	QTY.	DESCRIPTION	P/N
A	1	Scoop, Snow Plug	AL1117-00
B	1	"Y" Mounting Bracket	AL1438-00
C	4	Hex Head Screw, 1/4"-20x3/4"	AI1068-00
D	4	Washer, Split Lock, 1/4"	AI1309-00
E	4	Washer, 5/16"ID x 3/4"OD	AI1073-00
F			
G			
H			
I			
J			
K			
L			
M			
N			

NOTE: Hardware is supplied in the event that the original hardware is lost or damaged.

RELATED ITEMS FOR YOUR PURCHASE

Air Filter Wrap (S&B P/N: WF-1023)



Water Protection Scoop Wrap (S&B P/N: WF-1028)

