



STEP 1 – PRIOR TO INSTALLATION

- A) Bushwacker** only approves installing the flares according to these written instructions with the hardware provided. **WARNING:** Failure to install according to these instructions will invalidate the warranty. This includes, but is not limited to using alternative installation methods, hardware, or materials. **DO NOT USE:** Loctite, SuperGlue, or similar products on the hardware or the flares.
- B) Fit:** Verify the fit of the flares to vehicle. (Some filing, sanding, or cutting may be necessary to ensure proper fit).
- C) Painting:** (Optional) if paint is desired it must be done prior to installing flares on vehicle. Clean outer surface with a good grade degreaser. **DO NOT USE LACQUER THINNER OR ENAMEL REDUCER AS A DEGREASER.** Wipe outer surface thoroughly with a tack rag prior to paint. Application of plastic adhesion promoter for ABS plastic as per your paint system manufacturer's recommendations is required. Paint flares using a high quality enamel, or polyurethane automotive paint. If painting edge trim (not recommended), use a flex additive.
- D) Performance:** Using larger Tires may increase the area required to turn the vehicle. Some Tire/Rim combinations may require lowering bump stops and or installing steering stops to prevent tire from contacting flare.
- E) Exhaust System:** Modifications may be necessary to maintain a minimum 4" clearance between flares and exhaust pipes. (Exhaust gases should not vent directly onto flares)
- F) Metal Protection:** All exposed fasteners and bare metal should be treated with rust resistant paint **BEFORE** installing flares. Spray inner fender wells with undercoating **AFTER** flare attachments have been completed.
- G) Decals:** Flares may interfere with existing decals on vehicle. If you wish, remove decals prior to installation of flares.
- H) Care & Cleaning:** Bushwacker fender flares are built to last; any detergent you use to wash your vehicle is sufficient to clean the flare. Do not use any harsh abrasive detergents.

Dodge Extend-A-Fender® Fender Flares Set of 4

Set Part #50912-02

Rev-6 3/15/2016

For complete fitment info visit : www.bushwacker.com

TOOLS FOR EASY INSTALLATION:

- 8mm Socket
- #2 Phillips Screwdriver

PLEASE READ: Dirt and debris can become lodged between the fender flares and the vehicle's fenders, causing scratching and paint wear from vibration. Lund International is not responsible for any damage, and the installation of our fender flares is done with the buyer's understanding that this scratching and paint wear may occur.

LIMITED LIFETIME WARRANTY AGAINST ANY MANUFACTURING DEFECTS

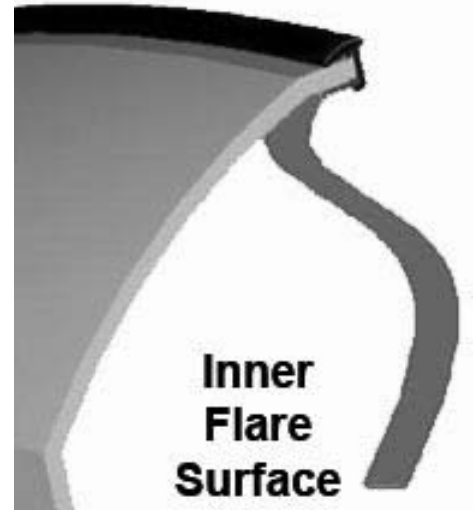
- To claim a warranty, you must provide Proof of Purchase.

Included in Hardware Kit:

- | | | | | | | | |
|----|---|----|---|----|---|----|---|
| 1. |  | 2. |  | 3. |  | 4. |  |
| | ET1-0002,
Edge Trim Tool, | | GP1-0005,
Large Wiper Style
Edge Trim,
312 inches | | CL1-0009,
Long "U" Clip,
Magni 565 | | SW1-0056,
#8 x 3/4"
PH Screw, |
| | 1 pc | | | | 8 pcs | | 8 pcs |

STEP 2 - EDGE TRIM INSTALLATION

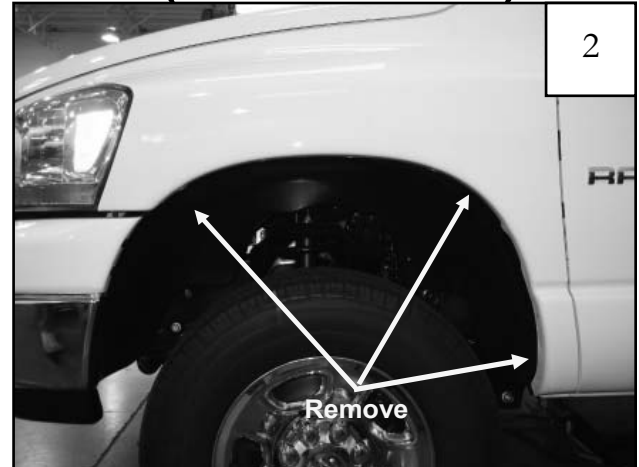
- Peel two to three inches of red vinyl backing away from Edge Trim (GP1-0005) tape. Applying the adhesive side of the edge trim to the inner side of the flare, affix the edge trim to the top edge of the flare (the portion that comes in contact with the vehicle).
- Press edge trim into place along the top edge of the flare in one-foot increments, pulling red vinyl backing free as you continue to work your way around the top edge of the flare.



Front Flare Installation Procedures (Driver's Side):



If there is a Cummins Logo on the vehicle, it must be removed prior to installing the front flares.



Using an 8mm socket, remove the three factory screws from wheel well. Retain these screws for future use.

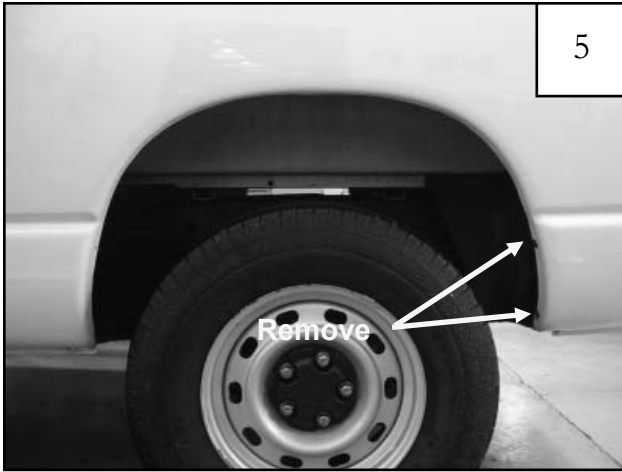


Holding flare in position on fender, reinstall screws removed in Step 2.



Verify fit and flare position on vehicle. Tighten all screws. Repeat steps 2-4 for Passenger side installation.

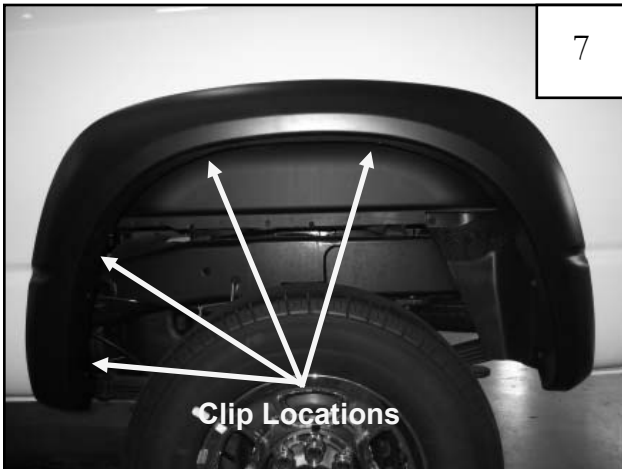
Rear Flare Installation Procedures (Driver's Side):



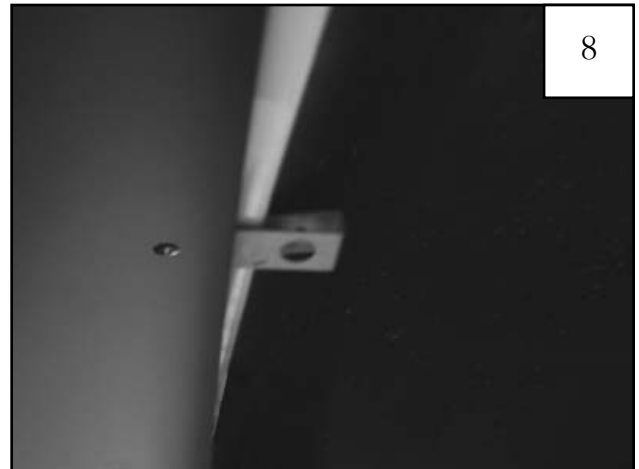
Using an 8mm socket, remove the two factory screws from the rear wheel well. Retain these screws for future use.



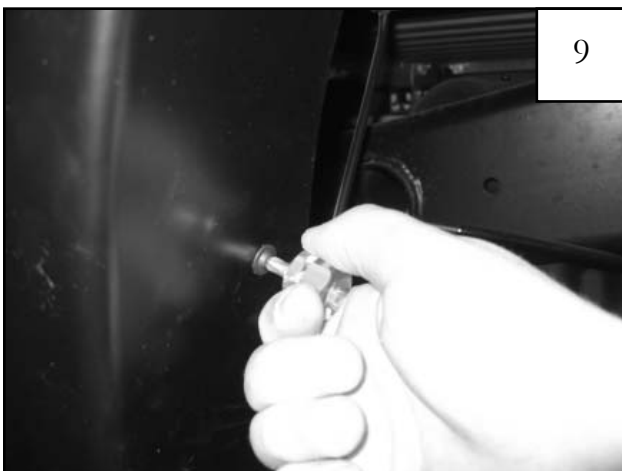
Holding flare in position on fender, reinstall screws removed in Step 5. Do not tighten at this time. *Note: An Awl may be used to align the threaded clip with holes in flare and fender lip. Make sure screws engage in splash shield.*



Slide a supplied clip (CL1-0009) over fender lip, aligning with existing holes (4 locations) in fender flare.



The top two clips (CL1-0009) will be offset on fender to allow for screw to tightend. *Note: There are no factory holes in fender at these locations.*

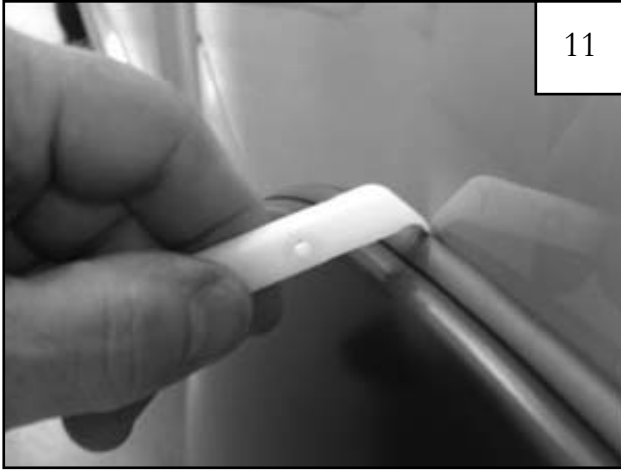


Using a #2 Phillips Screwdriver, insert a supplied Truss Head Screw (SW1-0056) through existing holes in flare and into holes of clips installed in Step 7.



Verify fit and that flare is positioned on vehicle correctly. Tighten all screws. Repeat steps 5-10 for Passenger side installation.

Edge Trim Tool Procedures:



Using supplied Edge Trim Tool (ET1-0002), seat edge trim against vehicle by hooking curved end under edge trim at one end of flare. Next, slide around outer edge of flare to the other end.



Using flat end of supplied Edge Trim Tool (ET1-0002), seat edge trim against flare by inserting straight end between edge trim and flare at one end. Next, slide around entire edge to the other end.