



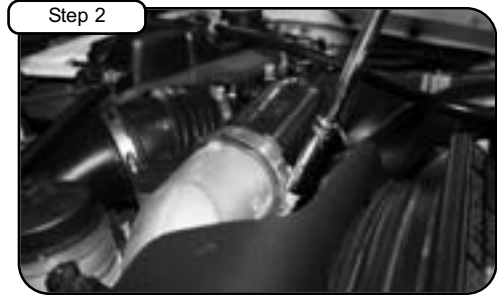
BladeRunner® Charged Air Manifold Installation Instructions: 2005-2007 Ford Power Stroke V8-6.0L (td)

advanced FLOW engineering®
 P.O. Box 1719
 Corona, CA 92878
 Support: 951-493-7100
 www.aFepower.com

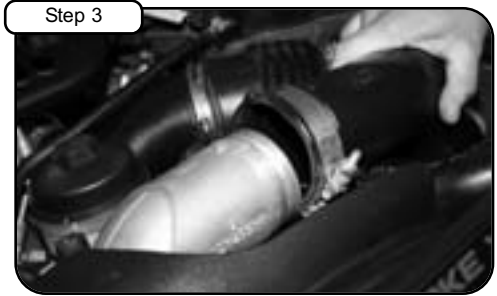
Part Number: 46-10041			Tools Required: 7/16" socket or wrench 10mm socket or wrench 8mm socket or wrench Torque wrench Ratchet w/ extension 3/16" allen key		Parts list: 1 Manifold, Charged Air 1 Screw, hex head M6 x 1.00 x 25 2 Screw, hex head M6 x 1.00 x 100 1 Stud, double end M6 x 25 1 Screw, hex head M6 x 1.25 x 12 1 Seal ring		4 Washer, flat M6 2 Plug, 1/8" NPT 1 Threadlocker, blue 1 Washer, flat M8 2 Nut, hex M6 x 1.00	
Make: Ford								
Model:	Year:	Engine:						
F-250	'05-'07	V8-6.0L (td)						
F-350	'05-'07	V8-6.0L (td)						
F-450	'05-'07	V8-6.0L (td)						
F-550	'05-'07	V8-6.0L (td)						
Excursion	2005	V8-6.0L (td)						



Step 1
Stock Intake Manifold.



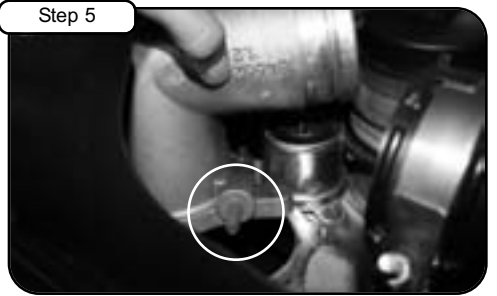
Step 2
With a 7/16" socket and ratchet, loosen the intercooler tube hose clamp.



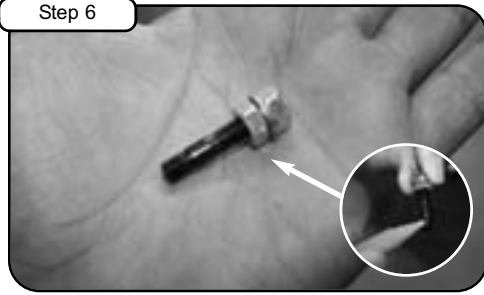
Step 3
Pull back clamp.



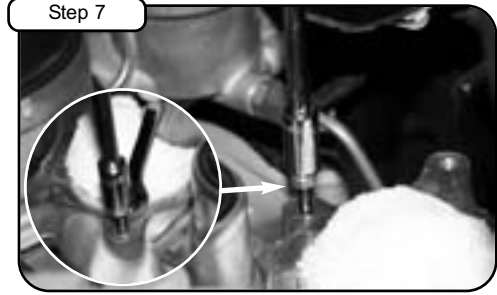
Step 4
With 8mm socket and extension loosen 4 screws holding in manifold.



Step 5
Pull back manifold screw away from fan shroud and remove manifold.



Step 6
Place M6 washer between 2 hex nuts at long threaded end of stud and tighten.



Step 7
Apply threadlocker and install stud into mounting hole on drivers side toward rear of vehicle. Loosen and remove nut and washer. See Notes 1, 2 & 5.



Step 8
Install 1/8" NPT plugs to back of manifold. Tighten using 3/16" allen key. Attach new seal ring to bottom of manifold. Install new aFe BladeRunner manifold to vehicle. See Notes 2 & 3.



Step 9
With nut and washer provided tighten loosely on manifold screw from step 7.



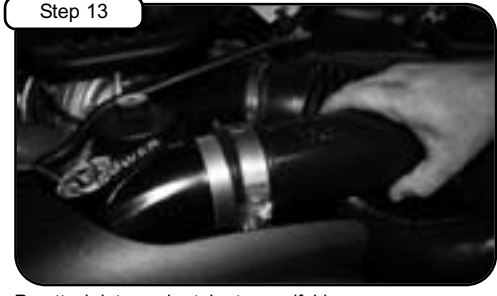
Step 10
Install and secure manifold using 2 M6 x 1.00 x 100 screws and washers provided and tighten loosely.



Step 11
Using M6 x 1.00 x 25 screw and washer secure last remaining manifold mount and tighten. Tighten all screws and nuts using 10mm socket or wrench. See Notes 2 & 5.



Step 12
Attach screw through fan shroud hole and tighten to manifold. See Notes 2 & 5



Step 13
Re-attach intercooler tube to manifold.



Step 14
Tighten clamp using 7/16" nut driver. See Notes 2 & 4.



Step 15
Your installation is now complete. Please check all screws periodically. Re-tighten if necessary. Thank you for choosing aFepower!

Notes: 1) Use provided Threadlocker (P/N 03-50162) on all screws. 2) DO NOT over-tighten screws. Please tighten to correct torque spec(s). **advanced FLOW engineering™** is not responsible for improper install. 3) Apply 62 in. lbs. torque. 4) Apply 75 in. lbs. torque. 5) Apply 10 ft. lbs. torque.
 California vehicle code sections 27156 and 38391 prohibit the advertising, offering for sale, or installation of any device, which modifies a vehicle's emission control system unless exempted. Unless otherwise noted, aFePower have not received an exemption from these code sections and are not legal for sale or use in California on vehicles originally equipped with pollution-control devices. It is illegal, except for racing vehicles, which may never be driven upon a highway, to remove or otherwise render inoperative any emission control device on regulated motor vehicles. Check the aFe website to ensure proper application.