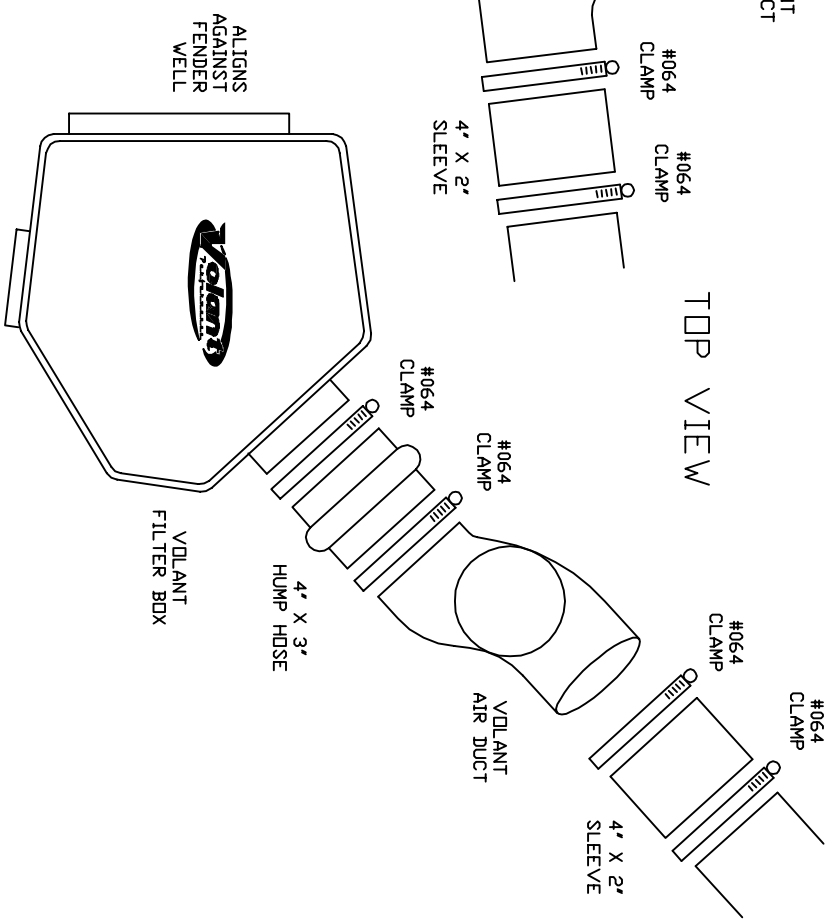
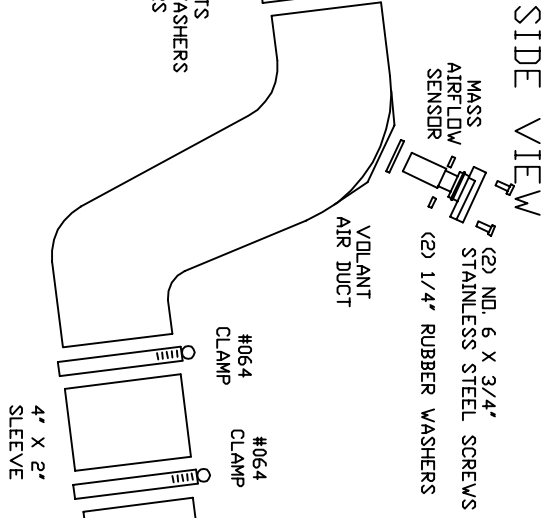
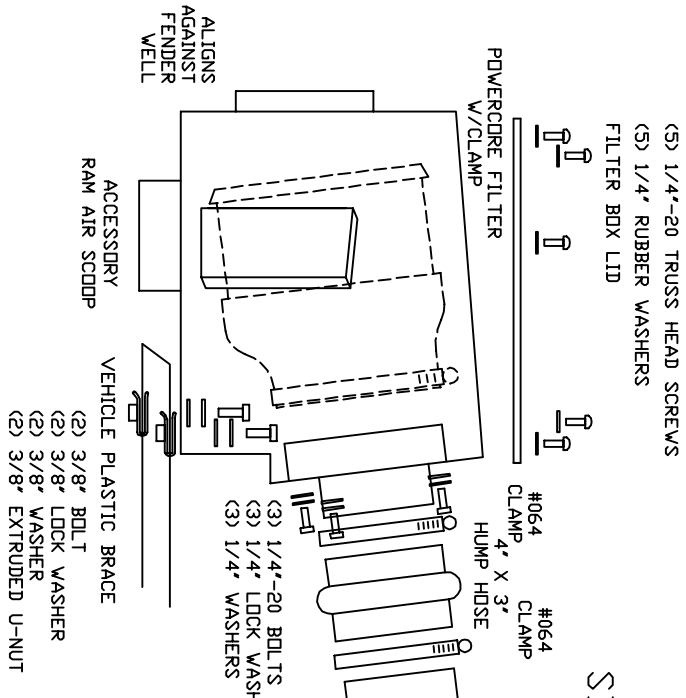


VOLANT COOL AIR INTAKES  
 PART NO.: 164596  
 INSTALLATION INSTRUCTIONS  
 WWW.VOLANT.COM  
 TECH SUPPRT: (909) 481-3888

164596 PARTS LIST

|   |                           |   |                   |   |                           |
|---|---------------------------|---|-------------------|---|---------------------------|
| 1 | VOLANT FILTER BOX         | 4 | #064 CLAMPS       | 2 | 3/8" EXTRUDED U-NUT       |
| 1 | VOLANT FILTER BOX LID     | 3 | 1/4"-20 BOLTS     | 2 | NO. 6 X 3/4" SS SCREWS    |
| 1 | VOLANT FILTER BOX ADAPTER | 2 | 3/8" BOLT         | 2 | 1/4" SMALL RUBBER WASHERS |
| 1 | VOLANT AIR DUCT           | 3 | 1/4" LOCK WASHERS | 5 | 1/4"-20 TRUSS HEAD SCREWS |
| 1 | POWERCORE FILTER W/CLAMP  | 3 | 1/4" WASHERS      | 7 | 1/4" RUBBER WASHERS       |
| 1 | 4" X 3' HUMPHOSE          | 2 | 3/8" WASHER       | 1 | T20 TORX BIT              |
| 1 | 4" X 2' SLEEVE            | 2 | 3/8" LOCK WASHER  |   |                           |





Volant Performance  
 Rancho Cucamonga, CA 91730  
 (909) 481-3888 Tech Support  
 (909) 476-1491 Fax  
 www.volant.com

**READ INSTRUCTIONS THOROUGHLY BEFORE DISASSEMBLING. DO NOT SKIP ANY STEPS. ANY QUESTIONS ON A VOLANT KIT MAY BE REFERRED TO OUR TECH SUPPORT LINE AT (909) 481-3888 OR VISIT OUR WEBSITE AT WWW.VOLANT.COM**

**INSTALLATION INSTRUCTIONS PART NO. 164596**

**Installation Instructions:**

1. Disconnect the negative battery cables
2. Remove the sensor from the factory using a T-20 torx bit
3. Using a 5/16 nut driver loosen the clamp holding the factory air duct to the turbo
4. Remove the 10mm bolt holding the Factory airbox to the core support
5. Remove the factory airbox and duct from the engine compartment by pulling up and out
6. Remove the rubber grommets from the tray and clip the 3/8 u-nuts to the tray
7. Place the Volant air box into factory position and tighten down with the 3/8 bolt, 3/8 lock washer and 3/8 washer provided
8. Attach the 4" hump hose to the filter adapter and tighten with a #64 using a 5/16 nut driver
9. Attach the 4 x 2 sleeve to the volant air duct and tighten with a #64 clamp using a 5/16 nut driver
10. Place the open end of the sleeve onto the turbo inlet and slid the open end of the air duct into the hump hose and tighten with #64 clamps using a 5/16 nut driver
11. Attach the sensor to the Volant duct with the (2) spacers provided using the (2) phillips screws provided tighten with a Phillips screw driver
12. Attach the filter to the adapter using a 5/16 nut driver
13. Attach the Volant lid to the box using a phillips screw driver
14. Check all connections and reconnect the batteries

**WARNING: OVER TIGHTENING HARDWARE MAY ALTAR THE INTEGRITY OF THE VOLANT AIR INTAKE SYSTEM.**

**BEFORE ROAD TESTING**

1. Start engine, leaving the transmission in park and securing the parking brake.
2. Make sure to look and listen for any unusual noises or air leaks. Repair problems if needed.
3. Once completed it will be necessary to check periodically for realignment and tightening of all connections.
4. Once all tests are completed, enjoy the performance of your new Volant Air Intake System.

**CARE AND CLEANING**

Check the cotton reusable filter periodically and remove any excessive dirt build-up by tapping the filter on the ground and brushing off the loosened dirt. Clean the filter by using Volant's Filter Recharger Kit. Volant's Filter Recharger Kit is designed to restore original air flow. Re-oil every 10,000 miles without cleaning to improve filtering in sand and dirt. Clean only when dirt is very excessive or 50,000 miles.

**RECOMMENDED SERVICE PARTS**

| RECOMMENDED SERVICE PARTS   | PART NO. |
|-----------------------------|----------|
| POWERCORE FILTER            | 61517    |
| COTTON REPLACEMENT FILTER   | 5152     |
| POWERCORE PREFILTER         | 51921    |
| PREFILTER FOR COTTON FILTER | 51905    |
| FOG LAMP SCOOP              | 36759    |
| (2) PIECE SCOOP             | 36867    |
| CLEANING KIT                | 5110     |

**APPLICATION GUIDE**

| MY    | MAKE  | MODEL   | ENG. |
|-------|-------|---------|------|
| 03-07 | DODGE | CUMMINS | 5.9L |

**INSTALL**

