

advanced FLOW engineering Stage-2 Air Intake

Instruction Manual P/N: 51-82322-E

Make: **Chevrolet** Model: **Silverado HD** Year: **2011-2016** Engine: **V8-6.6L (td) LML**
Make: **GMC** Model: **Sierra HD** Year: **2011-2014** Engine: **V8-6.6L (td) LML**



- Please read the entire instruction manual before proceeding.
- Ensure all components listed are present.
- If you are missing any of the components, call customer support at 951-493-7100 or e-mail at tech@afepower.com.
- Ensure you have all necessary tools before proceeding.
- Do not attempt to work on your vehicle when the engine is hot.
- Disconnect the negative battery terminal before proceeding.
- Retain factory parts for future use.

Label	Qty.	Description	Part Number
A	1	Seal, Trim: 7/16" (27"L)	05-00072
B	1	Housing	05-82322B2
C	1	Plug, Urethane	05-01361
D	1	Air Filter (Pro DRY S)	21-91105
E	1	Tube	05-82322B1
F	1	Grommet	03-50033
G	1	Cap	03-50103
H	4	Screw, Chs Hd: M4	03-50034
I	2	Screw, M4x12mm	03-50455
J	1	Sensor Cover	05-01372
K	1	Gasket	05-00631
L	2	Clamp, T-bolt (4-7/16")	03-50319
M	1	Coupling, Silicone Hump	05-01201
N	1	12oz. Cleaner Spray	90-10011

Installation will require the following tools:
 8mm Nut driver, 10mm Nut driver, Torx (T-20) driver, and 2.5mm Allen.

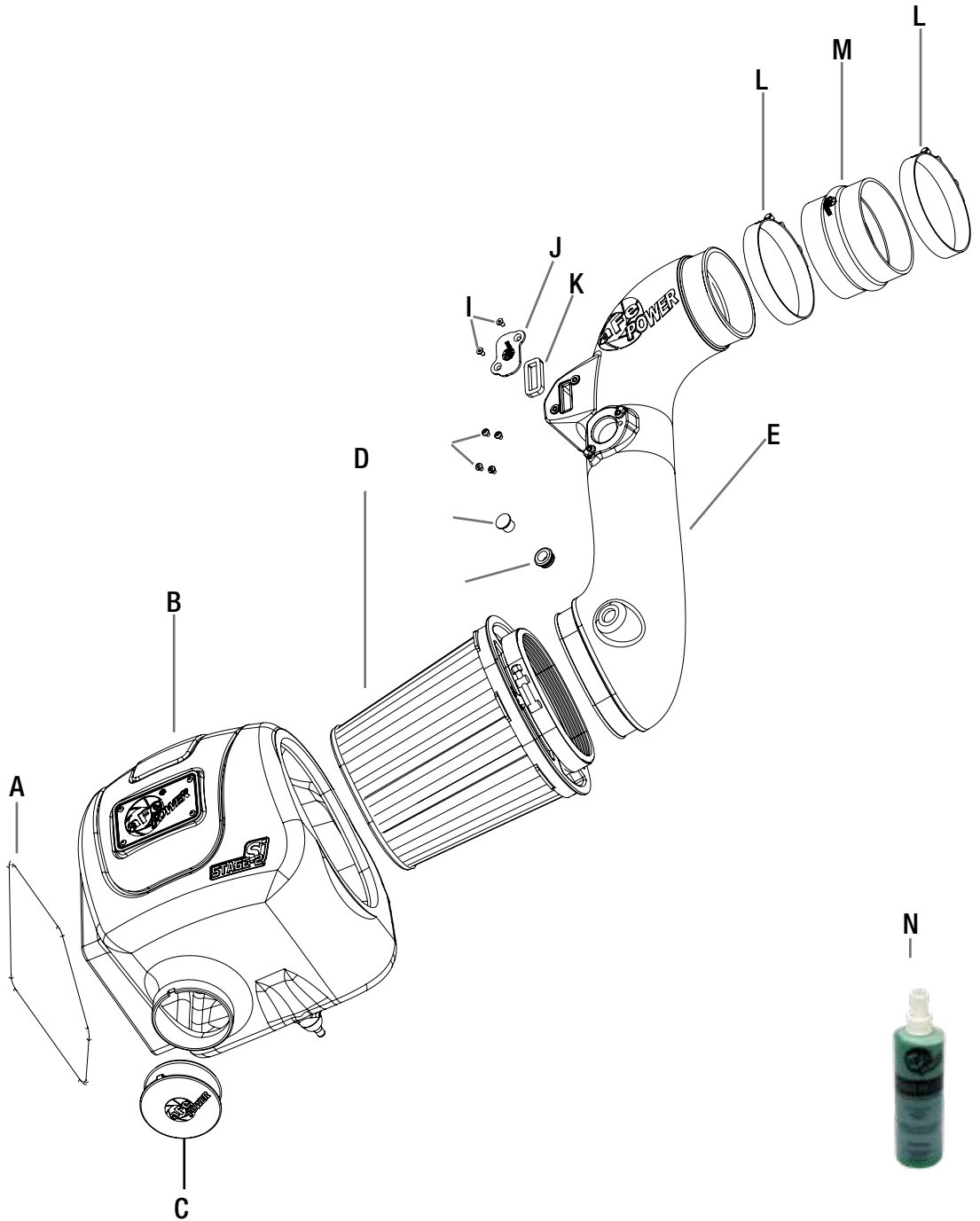




Figure A

Refer to Figure A for Steps 1-4

Step 1: On 2015 vehicles, remove the plastic trim (1) and plastic radiator shield (2) by removing all twelve shield clips.

Remove the side bracket (3) with a 10mm socket and ratchet.

Step 2: Disconnect Mass Air Flow Sensor (4), Temperature Sensor (5) and Humidity Sensor (6). (if equipped)

Step 3: Loosen all tube clamps using a 8mm nut driver.

Step 4: Remove the factory intake tube and air box out of the vehicle. (Use an upward pull to release



Figure B

Refer to Figure B for Steps 5

Step 5: Slide the PRO Dry S filter into the air box.



Figure C

Refer to Figure C for Steps 6-8

Step 6: Install the trim seal (7) on edge of the aFe air box.

Step 7: Remove the retaining plug (8) from the bottom of the factory air box.

Step 8: Install the plug on the aFe air box.



Figure D

Refer to Figure D for Steps 9-10

Step 9: (Optional) To seal up auxiliary opening of air box positioned in front of grill, use supplied plug (9).

Step 10: Install the Stage-2 Si air box into the vehicle. Firmly push it into the factory mounting grommets.

**Figure E****Refer to Figure E for Steps 11-13**

Step 11: Remove Mass Air Flow Sensor and Humidity Sensor from the factory air box using a Torx (T-20) driver.

Step 12: Install Mass Air Flow Sensor (10) and Humidity Sensor (11) (use factory gasket for Humidity Sensor) into the aFe Si intake tube using the supplied M4 x 8mm screws. If vehicle does not have a Humidity Sensor, use the supplied gasket, M4 x 12mm flathead screws, and cover to seal opening.

Step 13: Remove the filter minder and grommet from factory air box. Install factory grommet into the aFe intake tube, then firmly press filter minder into it. If your vehicle is not equipped with a filter minder, just plug off the hole with the provided grommet and cap (12).

**Figure F****Refer to Figure F for Steps 14-15**

Step 14: Install supplied silicone hump coupler and T-bolt clamps (13) on the aFe intake tube.

Do not tighten clamps at this time.

Step 15: Install the aFe intake tube into the vehicle. Slide the coupling in the turbo inlet tube first.

Then rotate the tube down and slide it into the filter.

Step 16: Tighten all clamps.

**Figure G****Refer to Figure G for Steps 17-19**

Step 17: Re-connect the Mass Air Flow Sensor and Humidity Sensor. Re-connect the temperature sensor by routing harness across the intake tube.

Step 18: Reinstall side bracket and plastic radiator shield.

Step 19: Check all the components are tight and secure. Your installation is now complete.

NOTE: Check all bolts, clamps, and connectors after 200 miles. Place enclosed CARB EO sticker on or near the device on a smooth/clean surface. EO identification label is required to pass the smog test inspection.

Page left blank intentionally



Page left blank intentionally

Page left blank intentionally



Pro DRY S Air Filter



P/N: 21-91105 (PDS)
24-91105 (P5R)
72-91105 (PG7)

Pro DRY S Restore Kit



P/N: 90-59999

Sprint Booster



P/N: 77-14003

Differential Cover w/ Oil



P/N: 46-70012-WL

Transmission Pan



P/N: 46-70242 (Black)
P/N: 46-70246 (Red)
P/N: 46-70240 (Raw)

Exhaust System



P/N: 49-04044-B (Black Tips)
P/N: 49-04044-P (Polished)

Torque Converter



P/N: 43-14011

Intercooler Kit



P/N: 46-20112

Exhaust Race Pipe



P/N: 49-04022

Fuel Filter



P/N: 44-FF011

Oil Filter



P/N: 44-LF001

Transmission Filter



P/N: 44-TF001

To purchase any of the items above, view airflow charts, dyno graphs, photos, and video; please go to aFepower.com.

Warranty

General Terms:

- aFe warrants their products to be free from manufacturer's defects due to workmanship and material.
- This warranty applies only to the original purchaser of the product and is non-transferrable.
- Proof of purchase of the aFe product is required for all warranty claims.
- Warranty is valid provided aFe instructions for installation and/or cleaning were properly followed.
- Proper maintenance with regular inspections of product is required to insure warranty coverage.
- Damage due to improper installation, abuse, unauthorized repair or alteration is not warranted.
- Incidental or consequential damages or cost, including installation and removal of part, incurred due to failure of aFe product is not covered under this warranty.
- All warranty is limited to the repair and/or replacement of the aFe part. To request Return Goods Authorization ("RGA"), email RGA@afepower.com or call (951)493-7100. Upon receipt of the RGA, you must return the product to the address provided in the RGA, freight prepaid and accompanied with a dated proof of purchase and the RGA. Upon receipt of the defective product and upon verification of proof of purchase, aFe will either repair or replace the defective product within a reasonable time, not to exceed thirty days.

Product Category	P/N Prefix	Warranty duration
Direct OE Replacement Filters	10, 11, 30, 31, 71, 73	Life of the vehicle
Racing Filters	18	1 year
Universal	21, 24, 72	2 years
Air Intake Systems	50, 51, 54, 55, 75	2 years
Exhaust Systems	49	2 years
Intercoolers & Intercooler Tubes	46-2	2 years
Intake Manifolds	46-1	2 years
Differential Cover	46-7	Life of the vehicle
Exhaust Manifolds	46	2 years
Throttle Body Spacers	46-3	2 years
Fluid Filters	44	90 days
Pre-Filters	28	2 years
Heavy Duty OE Replacement	70	2 years
PowerSports OE Replacement	81, 87	2 years
PowerSports Intake Systems	85	2 years

No other warranty expressed or implied applies nor is any person or advanced FLOW engineering authorized to assume any other warranty. Some States do not allow the exclusion or limitation of incidental or consequential damages or do not allow limitations on how long an implied warranty lasts, so the above limitations or exclusions may not apply to you. This warranty gives you specific legal rights, and you may also have other rights which vary from State to State.



advanced FLOW engineering, inc.

252 Granite Street Corona, CA 92879

TEL: 951.493.7100 • TECH: 951.493.7134

E-Mail: Tech@aFepower.com