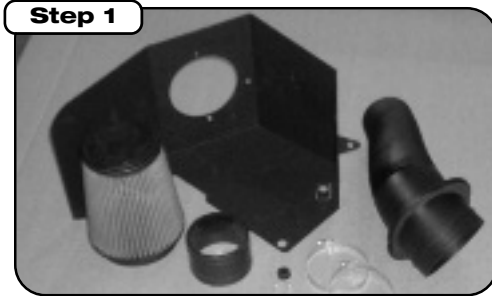


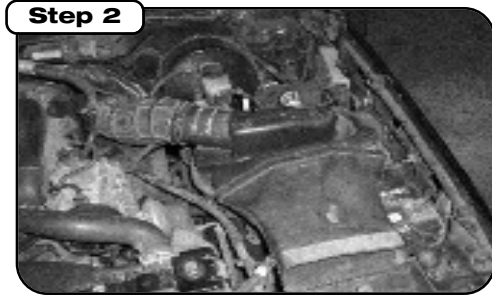


Intake Kit Installation Instructions: 1994-1997 Ford F-250/F-350 V8-7.3L Power Stroke

Kit Part # 51/54/75-10792	Tools Required Med Flat screwdriver 10mm socket or wrench 7/16" socket or wrench	Part List: 1 Air Filter Replacement (24-90015, Pro-GUARD 7 72-90015 or Pro DRY S 21-90015) 1 Trim Seal 3/4" Bulb 37"L 1 Housing 1 Coupler Straight 4"x 3" 2 #64 clamp 1 Filter-minder grommet (Thick) 1 Temp sensor grommet (Thin) 2 M6x1x25 mm hex head screw	2 M6 wavy washer 2 M6 flat washer 1 Intake Tube 2 M6x1 Nut 1 Grommet
Make: Ford			
Model: Year: Engine			
F-250 1994-1997 V8-7.3L (td-di)			
F-350 1994-1997 V8-7.3L (td-di)			
Note: Please confirm Parts List and read all instructions steps before proceeding with actual installation.			



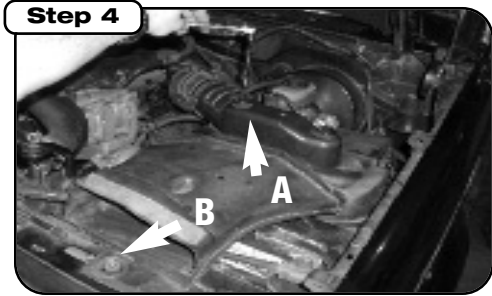
Complete kit with parts.



Stock Assembly



Loosen clamps securing stock intake tube onto stock air box and turbo inlet elbow



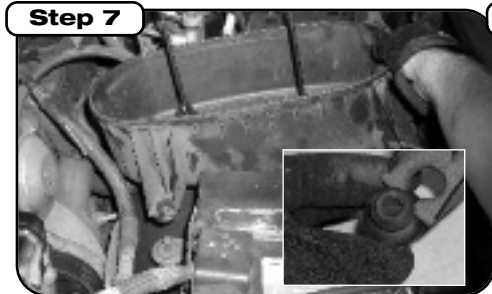
Using an extension from a 1/4" drive ratchet, fully loosen plastic bolts on top of factory air box (a), remove bolt securing front of air scoop to core support (b)



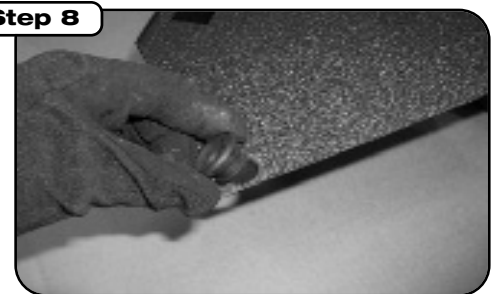
Remove top half of air box from lower half. Remove factory intake tube from factory turbo inlet elbow.



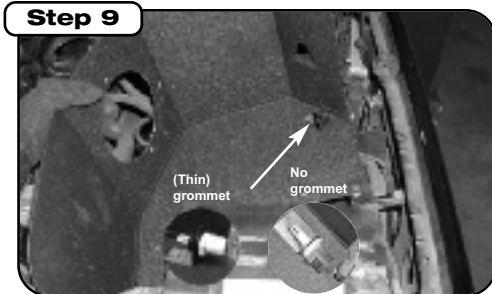
Using a 7/16" socket, remove nut securing lower air box half to engine compartment. Disconnect electrical harness going to temperature sensor on the side of the air box.



Remove lower half of air box. Remove rubber grommets from feet of the lower air box and save for use later. Remove filter minder indicator from factory air box for use later. Remove temperature sensor and save for use later.



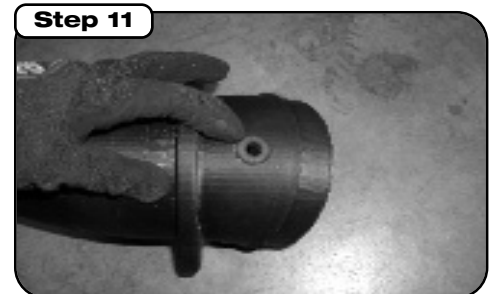
Place saved grommets into holes on the bottom of the aFe heat shield.



Lower heat shield into engine compartment and secure using original hardware. Insert temperature sensor into tab on heat shield w/ (Thin) grommet provided. NOTE: On some models it may be necessary to disassemble and reassemble sensor to install into aFe heat shield.



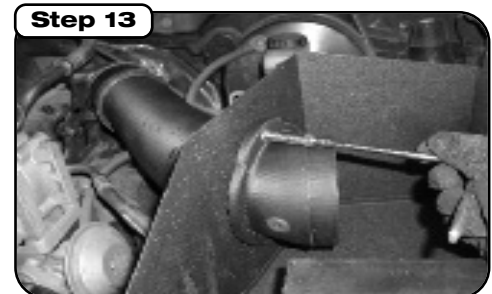
Place provided clamps loosely over provided coupler and place onto factory turbo inlet elbow



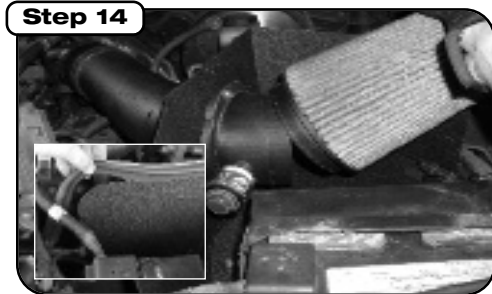
Install provided (Thick) grommet into the hole in the tube and place filter-minder indicator into hole.



insert tube through heat shield so that the flange is on the inside of the heat shield and insert into coupler installed in previous step.



Using provided hardware, secure tube flange to heat shield. After tube has been secured to heat shield, tighten clamp holding the coupler to the tube.



Install pre-oiled aFe filter and tighten clamp. Install trim seal on heat shield.



Place enclosed CARB EO sticker on a clean/smooth surface on or near the intake system. EO identification label is required in passing the Smog Check Inspection. Complete kit installed.

Note: Filter Cleaning and Re-oiling: When cleaning your aFe filter, be sure to use only aFe's "Restore Kit" aFe P/N: 90-50001 blue oil aerosol, or aFe P/N: 90-50501 blue squeeze bottle oil on Filter Replacement: PN: 24-90015 (black w/blue media) or aFe P/N: 90-50000 yellow oil aerosol, or aFe P/N: 90-50500 yellow squeeze bottle oil on Filter Replacement: PN: 72-90015 Pro-GUARD 7 (black w/gold media). Pro Dry S P/N: 21-90015 (black w/white media) Pro Dry S cleaning: see cleaning instruction sheet 06-00074