

CS650DTFL

Low Profile In-Ceiling, Coaxial, Infinite Baffle

Loudspeaker with FastLoc Grille

The easy to install DT series speakers are a 2-way ceiling loudspeaker that incorporates high tech woofer materials with a butyl rubber surround and the state-of-the-art dual dome diffraction-less Ferrofluid cooled tweeters. The tweeters are in a preset angled configuration to prevent noise canceling. The DT provides stereo sound from one speaker. This revolutionary combination provides superior and more natural sound for both foreground and background applications.

The FastLoc grille patent no. 8,422,722, is a feature found only at Current Audio. Our design has allowed for the smallest exposed plastic bezel in the industry, truly making it disappear into the mounting surface. The FastLoc grille's unique patent pending mechanism allows for a quick installation and removal of the grille while securely fastening it in place to all types of mounting surfaces. Due to the unique design the grille will conform to uneven surfaces including popcorn, heavy textured and uneven ceilings. While our competitors have chosen to utilize magnets in their designs thus requiring the use of a steel grille that will rust our design allows us to use corrosion and rust resistant aluminum.

The Infinite Baffle design makes it the ideal choice for typical applications in open beam attic or enclosed ceilings.

For efficiency and consistency the CS650DTFL and CS800DTFL series are timbre matched to the CS series, FIT series and WS series of speakers. The CECS65DT is timbre matched to the CECS series of speakers.

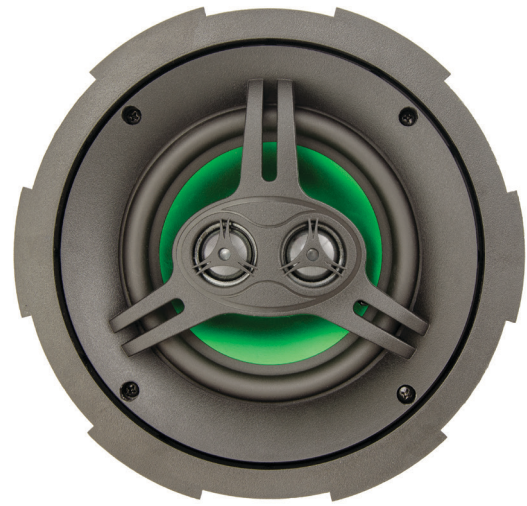
The speaker grille color is white, and is a close match to Frazee White Shadow 181. It can be painted to match any décor. The speaker enclosure is a durable UV-resistant material that allows for both indoor and outdoor installations. Unlike other grilles that use magnets to hold them on they must be made of steel that will rust. The speaker is weather-resistant.

The perforated powder-coated aluminum alloy grille is long-lasting, corrosion resistant and rust-free.

Four built-in expanding transverse dog leg clamps permit installation with or without pre-wire construction brackets in drywall or material with thickness of 7/32" to 1 3/16".

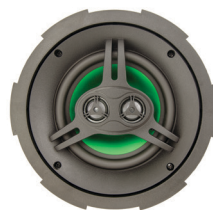
Electrical connection, up to 12 gauge wire, is made by two gold plated constant tension spring-loaded terminals.

With our limited 5 year warranty you are assured years of superior trouble free operation.



SPECIFICATIONS

Driver with Dual Voice Coil	6.5" Dual Voice Coil MetaPlex™ Composite Cone w/Butyl Rubber Surround
Tweeter	Dual 1" (25mm), Silk Ferrofluid Cooled Dome
Frequency Response	42Hz-20kHz
Power Handling	5 - 100 Watts
SPL @ 1 Watt/1 meter	90 dB
Impedance 8 ohm nominal	Fixed Crossovers
Diameter x Depth	9 3/8" (237mm) x 3 3/4" (95mm)
Retrofit Cutout Diameter	8 1/4" (210mm)
Grille Diameter	9 3/4" (247mm)
Standard Pack Dimensions (weight)	14 1/2 x 14 1/2 x 6 5/8 (7 lbs)
Master Pack Dimensions (weight)	29 3/4 x 15 1/8 x 14 1/4 (30 lbs)



Part Number	92095
Manual URL	www.currentaudio.com
Accessories	New Construction Bracket NC6CB Part #92026
	Volume Control ZL75R Part# 92034
	SpeKap Part # 92069

