

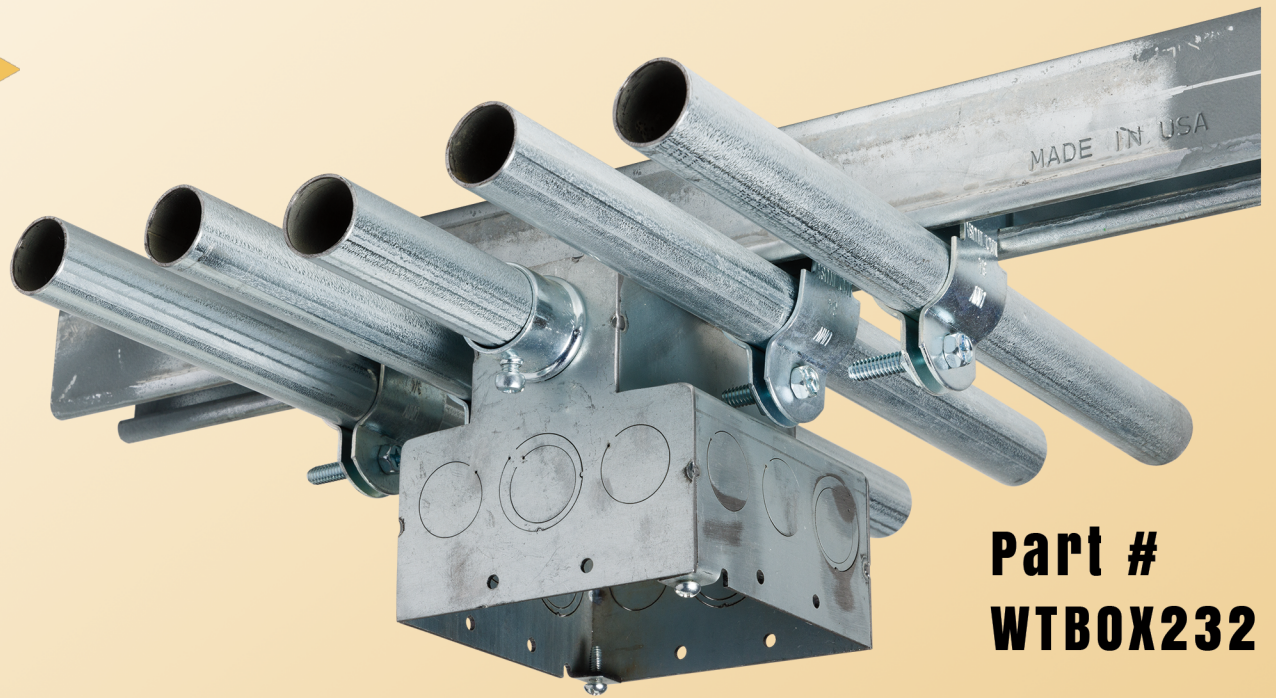


# Winnie Industries

MANUFACTURER OF FASTENING SUPPORTS

**NEW  
PRODUCT!**

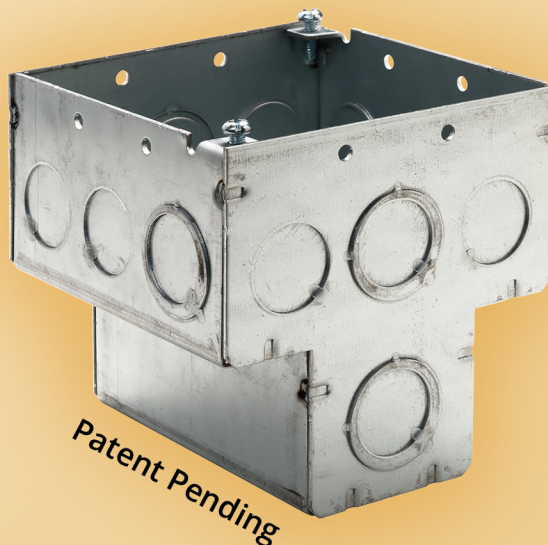
T-Boxes are used to distribute power to a number of electrical devices. Below is a picture of how the Winnie Industries T-Box looks when fastened onto UNISTRUT.



**Part #  
WTBOX232**

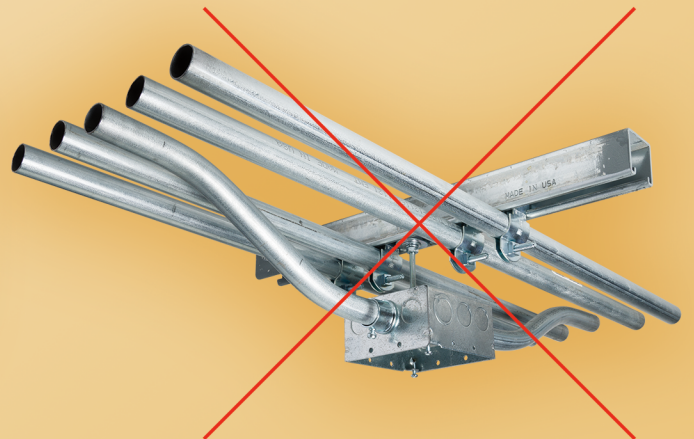
## FEATURES OF WTBOX232

- » Galvanized steel construction
- » ½" and ¾" Knockouts
  - › Eight ½" KO
  - › Six TKO's
- » Welded construction
- » Raised ground



## BENEFITS OF USING WTBOX232

- » Reduced time and effort to bend conduit



- » Easier access to knockouts in all directions
- » Aesthetically pleasing