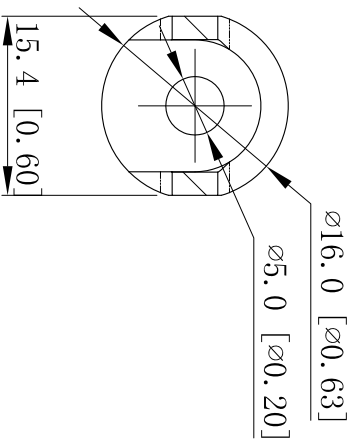


## CUTAWAY VIEW A-A



- NOTES(技术要求):
- 1.All dimenstions in millimeters and [inches]
  - 2.Material:POM,
  - 3.When packing, top legs are snapped in correct position, no dislocation.
  - 4.Can't break when wire pushes in or legs extend 180 degree.

Item Number	Colour
WCH050BK	Black
WCH050WH	White

## 1/2" Cable Holder

SIZE	DWG NO.	REV
A4	WCH050	B