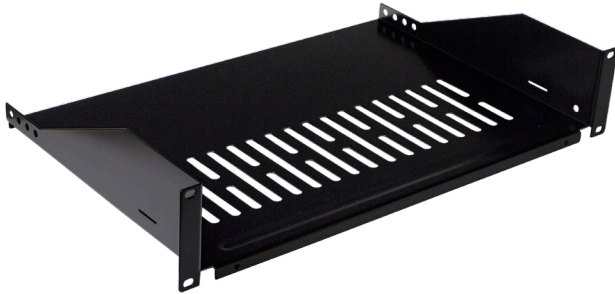


PRODUCT SPECIFICATIONS



SPECIFICATIONS	
Shelf Type	Cantilever Shelf
Material	17 Gauge Cold Rolled Steel
Finish	Black Powder Coated
Loading Capacity	50 lbs.
Height	4.12"
Width	19"
Depth	Varies by Item Number
Rack Unit Quantity	2U

AT-A-GLANCE

SHELF TYPE	Cantilever Shelf
SHELF MATERIAL	17 Gauge Cold Rolled Steel
RACK UNIT QUANTITY	2U
AVAILABILITY	Sold Individually

VERICOM® Cantilever Shelf

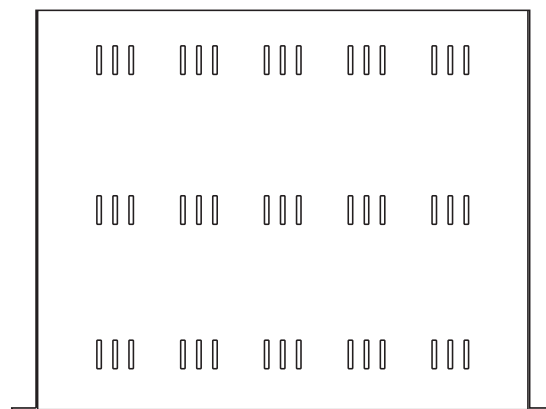
This product is designed to add functionality to your racking, while the low profile design only requires 2U. Our cantilever shelf features ventilation holes to keep equipment running cool. This shelf is used primarily for relay racks but can also be used for cabinets.

FEATURES & BENEFITS

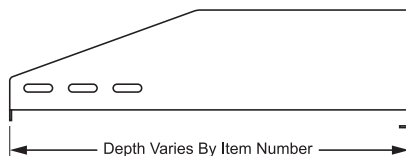
- Requires 2U of Space
- Vented to Provide the Airflow Necessary to Keep Equipment Running Cool
- Mountable to Standard 19" Racks or Cabinets
- Include Mounting Hardware
- Available in 3 Sizes
- Sold Individually

ITEM NO.	DEPTH
RASC122	12"
RASC142	14"
RASC162	16"

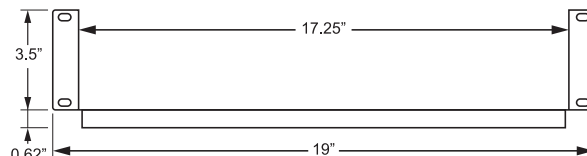
TECHNICAL DRAWING



TOP



SIDE



FRONT

NOTE: TECHNICAL SHEETS ARE SUBJECT TO CHANGE WITHOUT NOTICE.