

48-Port Category 6 Patch Panel

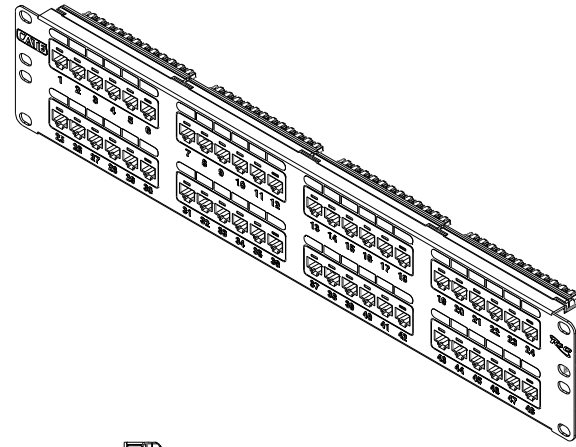
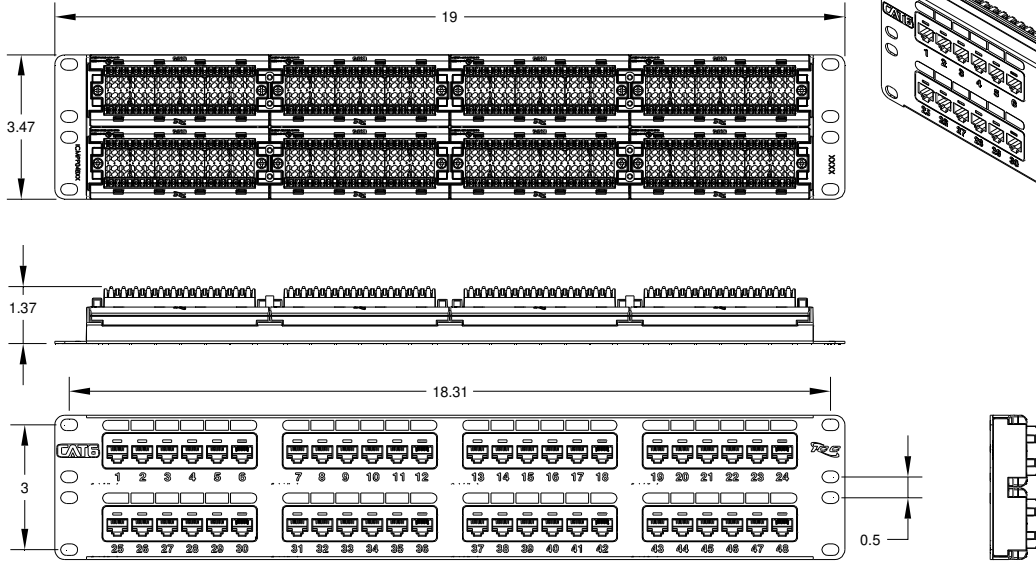
Package Includes:

- A. 48-Port CAT 6 Patch Panel, **1 Piece**
- B. #12-24 x 5/8" Pan Head, Pilot Point Machine Screw, **4 Pieces**
- C. Installation Instructions, **1 Sheet**



Features and Benefits

- Rack mounted CAT 6 component rated patch panel provides excellent performance for data Networks requiring maximum speed and bandwidth
- Enhanced crosstalk cancellation reduces return loss and improves performance by rejecting Noise and unwanted signals
- Exceeds ANSI/TIA-568-C requirements for permanent, channel link and component performances
- Engineered to provide 110 IDC termination reducing installation time
- Includes both TIA-568A and TIA-568B color wiring diagrams
- Backwards compatible to all lower rated category components
- Designed to fit all standard 19" racks and cabinets
- 2 Rack Mount Space (RMS)
- Used with ICPCSK CAT 6 Patch cords, 4-Pair 110 punch down tool ICACSPDT4P, and ICACSPDT00 110 punch down tool
- UL 1863 compliant
- Country of Origin: Taiwan
- TAA Compliant



NOTE: UNLESS OTHERWISE SPECIFIED

A. Material:

- 48-Port Patch Panel: 16 GA CRS
- Jack Housing: High Impact, Flame Retardant Plastic, UL 94V-0
- Spring Wire: Phosphor Bronze
- 110 Connector: Phosphor Bronze Alloy with 100 micro-inch Alloy
- Gold Rating: 50 Micro-inches of Gold over 100 micro inches of Nickel

B. Surface Finish: Black Powder Coat

C. Mechanical:

- Mating Force: 100 Grams MIN/Contact
- Temperature Range: -40°~70°C
- Plug Retention in Jack: 50N (11 LBS SQ)
- IDC Wire Gauge: 22~24 AWG

D. Electrical:

- Current Rating: 1.5 AMP DC
- Contact Resistance: 2.5 MILOHMS MAX

T568A & T568B Wiring Standards		
IDC Color Assignments		
Jack Pin Number	T568B Wire Colors	T568A Wire Colors
5	White Blue	White/Blue
4	Blue	Blue
1	White/Orange	White/Green
2	Orange	Green
3	White/Green	White/Orange
6	Green	Orange
7	White/Brown	White/Brown
8	Brown	Brown

CAT 6 Connecting Hardware Requirements												
Frequency (MHz)	1.0	4.0	8.0	10.0	16.0	20.0	25.0	31.25	62.5	100	200	250
NEXT Loss (dB)	75.0	75.0	75.0	74.0	69.9	68.0	66.0	64.1	58.1	54.0	48.0	46.0
FEXT Loss (dB)	75.0	71.1	65.0	63.1	59.0	57.1	55.1	53.2	47.2	43.1	37.1	35.1
RETURN Loss (dB)	30.0	30.0	30.0	30.0	30.0	30.0	30.0	30.0	28.1	24.0	18.0	16.0
Insertion Loss (dB)	0.10	0.10	0.10	0.10	0.10	0.10	0.10	0.11	0.16	0.20	0.28	0.32

