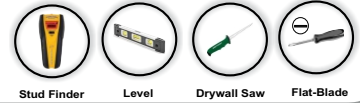


Kit Includes:

72" Powerwire Prewired PowerOutlet | 12" Powerwire Prewired PowerInlet
Pre-wired PowerConnectors | 72" PowerConnect Supply Cord | Template



Tools for Installation Not Included



CODE COMPLIANCY

SUPPORT

1) NEC Article 334.30

Unsupported NM Cable

2) NEC 2014 Article 400.7(A)(11)

Permitted use of cord / approved kit

using inlet to energize receptacle

Meets all US states and cities
adaptive to the National
Electrical Code (NEC)
allowing NM type building cable.
Specific locations not allowing
NM-type building cable:
~Cook County, IL ~NYC, NY



Caution - Risk of Fire - Do Not Install Power Supply Cord Within the Wall Cavity
WARNING - Risk of Fire and Shock, Do Not Connect this Box to any Other Circuits or Outlets.
This kit is rated to 15AMP 125Volt use only

Do not install this product near water, example, near a sink, tub, shower, swimming pool or laundry area.

Manufacturer is not liable for damages due to improper installation methods not followed herein.

This product does not have built-in electronic circuitry for surge protection or A/C filtering.

It is recommended that this product be connected to a quality surge-protector/power conditioner for equipment protection.

Disclaimer. HD-Products, Inc. the Manufacturer, it's agents, suppliers, and affiliates, shall not be liable for any damages, not limited to; misuse, acts of nature, verbal and written expression and improper installation. Improper installation is determined such to include, not limited to, non-code compliant installation, product modifications, alterations, adjustments, and substitutions of components or materials.

Limited 2-year Warranty from Manufactures Defects: Limited Two Year product warranty against manufacturer's defects.

HD-Products, Inc., intent to make this manual accurate and complete. However, HD-Products, Inc., makes no claim that the information contained herein covers all details, conditions, or variations. Nor does it provide for every possible contingency in connection with the installation or use of this product. The information contained in this document is subject to change without notice or obligation of any kind. HD-Products, Inc., makes no representation of warranty, expressed or implied, regarding the information contained herein.

HD-Products, Inc./LLC. PowerBridge Solution 3869 Norwood Dr. Littleton, CO 80125 USA
Customer Service: 855-755-9838 info@powerbridgesolution.com www.PowerBridge1.com

Part No. ONECK1014v2.0 © 2013 All Rights Reserved

So Simple... You can do this!™

Step 1 Location - Wall Cutout

PowerOUT - Determine TV wall mount bracket location.

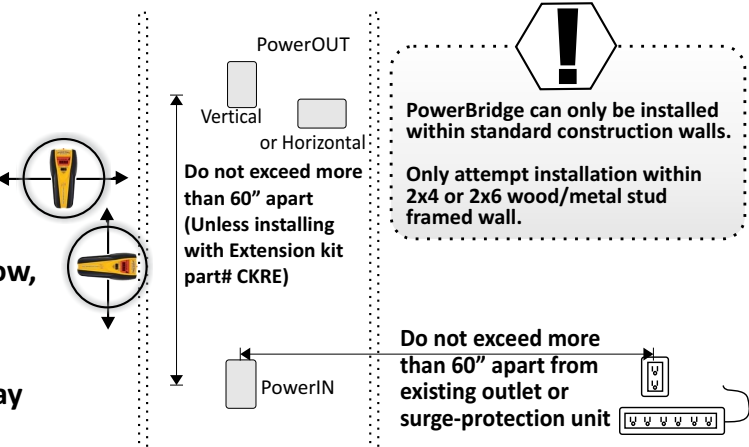
Align between wall framing studs.

Use stud finder to determine in-wall obstructions between framing both VERTICALLY and HORIZONTALLY.

Install in any direction, right/left, horizontal or vertical below, above, next to TV wall bracket.

PowerIN - Align with upper PowerOUT within same stud-bay no more than 60" apart.

Install within 60" from an existing power outlet or power-surge device.



Use supplied template sheet to mark area to cut out from drywall.

Use a level to maintain proper alignment.

Carefully use drywall saw or utility knife to cut along outside of line.



Need to extend the length?
Part# CKRE Extension Kit available
www.PowerBridgeSolution.com/CKRE.html

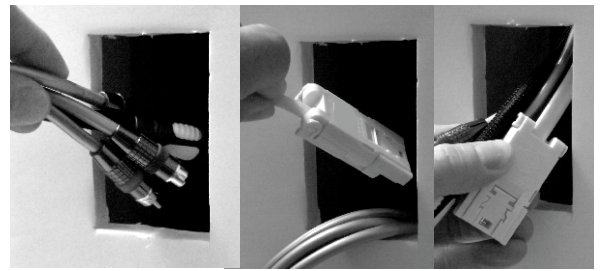
Warning! If insulation exists, remove or push completely away from the openings to allow proper flush mounting.

Step 2 Wall Installation

A) Begin at the upper PowerOUT location.
Drop or wall-fish audio video cables FIRST, to the PowerIN location below.

REPEAT for PowerConnect cable with connector.

Pull all cables out lower cutout.

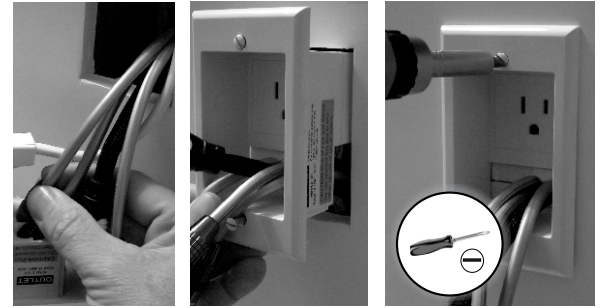


Drop or wall-fish audio/video cables within wall BEFORE PowerConnect cable

B) Slide audio video cables through backside of CableBrush.

Allow for enough cable length out to connect to TV.

C) Slide PowerOUT into wall opening.
Use Flat-Blade screw driver to secure panel to wall.
Careful to not over-tighten.




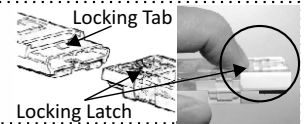
D) At PowerIN location, connect both PowerConnect Cable connectors together. These are tight by design and require some pressure and wiggling to secure.

You should hear a click sound locking both connectors together.



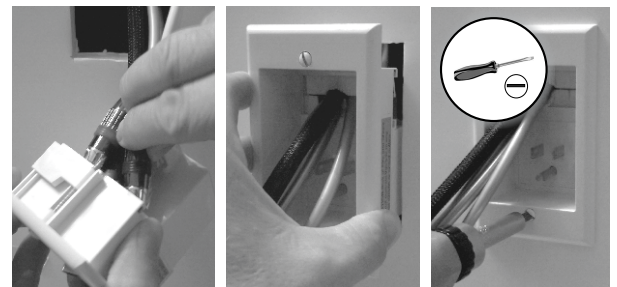
Listen for the Click

 To disconnect PowerConnectors, push-in end of Locking Latch on the TOP side of both connectors. Press with finger tips at the same time pulling apart connectors to disconnect from Locking Tabs.

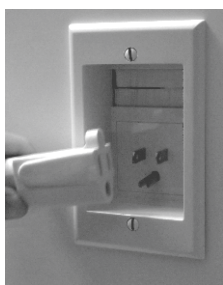


E) Slide audio video cables through backside of CableBrush.
Allow for enough cable length out to connect to AV equipment.

F) Slide PowerIN panel into wall opening.
Use Flat-Blade screw driver to secure panel to wall.
Careful to not over-tighten.



Step 3 Plug it in

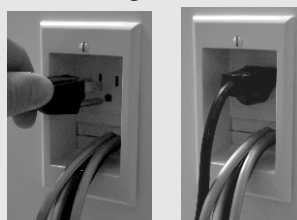


Plug supplied 6' PowerConnect cord into PowerIN.
Plug other end into existing grounded outlet or surge protector.
CAUTION-Risk of Fire-Only Use Cord Set Provided With This Kit or equivalent.

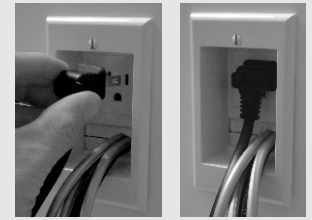
The PowerBridge In-Wall Extension is now energized.

Plug TV power supply cord in to PowerOUT and connect AV cables to TV.
Follow wall mount manufacture instructions, install TV on wall bracket.

Plug in TV



Plug in Flat Angle Plug



Surge Protector



Existing Outlet





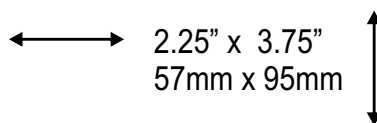
Wall Cut-out Template:

Lay against wall, use a level on edge of paper to align.

Use a pencil to trace around edge.

Use drywall saw or sharp utility knife cut on the line.

Remove drywall section.



Model #ONE/Pro