

SIMPLEX SC TO SC SINGLE-MODE OS2 9/125 FIBER OPTIC  
KEYSTONE JACK, HIGH DENSITY SNAP-IN DESIGN, 1 JACK/EA

SCP PART#:  
**F-KJ-SMSCSC-WT**  
**F-KJ-SMSCSC-BK**

## PRODUCT SUMMARY

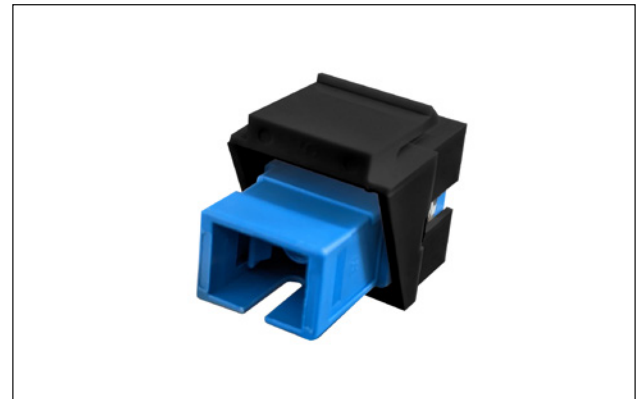
Keystone snap-in modules provide feed-through patching via any industry-standard keystone patch panel or wallplate and connect two single mode fiber optic cables while contributing to a clean and professional installation.

## FEATURES & BENEFITS

- Simplex SC to Simplex SC
- Single mode (OS2) compatible
- Low insertion loss
- Includes 2 removable dustcaps
- High Density Snap-In Design
- RoHS Compliant
- Available in White: **F-KJ-SMSCSC-WT**  
and Black: **F-KJ-SMSCSC-BK**



**RoHS**



## SPECIFICATIONS

| Physical Specifications      |  |
|------------------------------|--|
| Connector Type (End A)       | Female simplex SC                        |
| Connector Type (End B)       | Female simplex SC                        |
| Polish Type                  | UPC / UPC                                |
| Coupler Style                | Keystone                                 |
| Color                        | Keystone: White or Black / Coupler: Blue |
| Mechanical Specifications    |  |
| Fiber Type                   | Single mode OS2                          |
| Supported Fiber Count        | Simplex (1 strand)                       |
| Housing Material             | ABS+PC plastic                           |
| Locking Clip Material        | Phosphor Bronze                          |
| Environmental Specifications |  |
| Operating Temperature        | -4 - 140°F (-25 - 60°C)                  |
| Storage Temperature          | -40 - 158°F (-40 - 70°C)                 |
| Operating Humidity           | 0 – 95%, non-condensing                  |