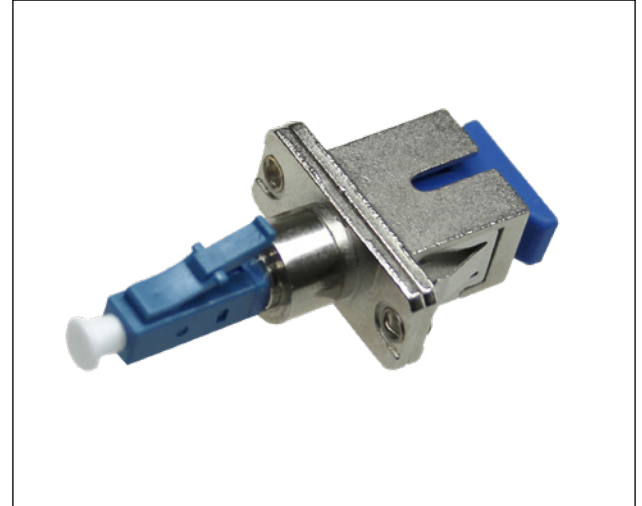


SIMPLEX SC(F)/LC(M) SINGLE-MODE PANEL MOUNT COUPLER
 13MM FEMALE/MALE - OS2 (BLUE), UPC POLISH TYPE - 1 EACH

SCP PART#:
F-13PMC-OS2SCLC-FM

PRODUCT SUMMARY

Fiber optic adapters provide feed-through patching and connector conversion via any industry-standard patch panel. They connect two multimode fiber optic cables while contributing to a clean and professional installation.



FEATURES & BENEFITS

- Simplex Female SC to Male LC
- Single mode (OS2) compatible
- Panel-mount style
- High precision ceramic sleeve
- Stainless steel clip
- For UPC polish type cables
- Low insertion loss
- Rated for 1000 plug cycles

SPECIFICATIONS

Physical Specifications	
Connector Type (End A)	Female simplex SC
Connector Type (End B)	Male simplex LC
Polish Type	UPC / UPC
Coupler Style	In-line
Color	Blue / Silver
Mechanical Specifications	
Insertion Loss	<0.3dB
Fiber Type	Single mode OS2
Supported Fiber Count	Simplex (1 strand)
Housing Material	ABS+PC plastic (UL 94V-0) with chrome overlay
Environmental Specifications	
Operating Temperature	-4 - 158°F (-25 - 70°C)
Storage Temperature	-40 - 185°F (-40 - 80°C)
Operating Humidity	0 – 95%, non-condensing
Regulatory	RoHs