



Catalog Number See Table
UPC Number
Description One Conductor One Hole Aluminum Mechanical Lug
 #6 Thru 750 MCM



- Features**
- Manufactured from High Strength High Conductivity Aluminum Alloy
 - Electro-Tin Plated
 - CU-AL Dual rated for AL/AL, AL/CU, CU/CU Applications

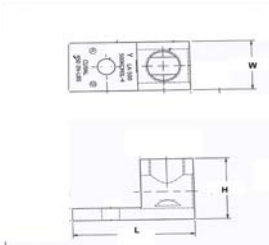
General
 Conductor Size: See Table
 Material: 6061-T6 Aluminum Alloy
 Finish: Electro-Tin Plating
 Screw Type: #6 Thru 2/0 Slotted Screw
 250 Thru 750 MCM Hex Head

Dimension Information See Table

Specifications
 Temperature Rating 90° C
 Voltage Rating 600
 Flammability Rating N/A
 Amp Rating To Conductor

Packaging
 Box Qty See Table

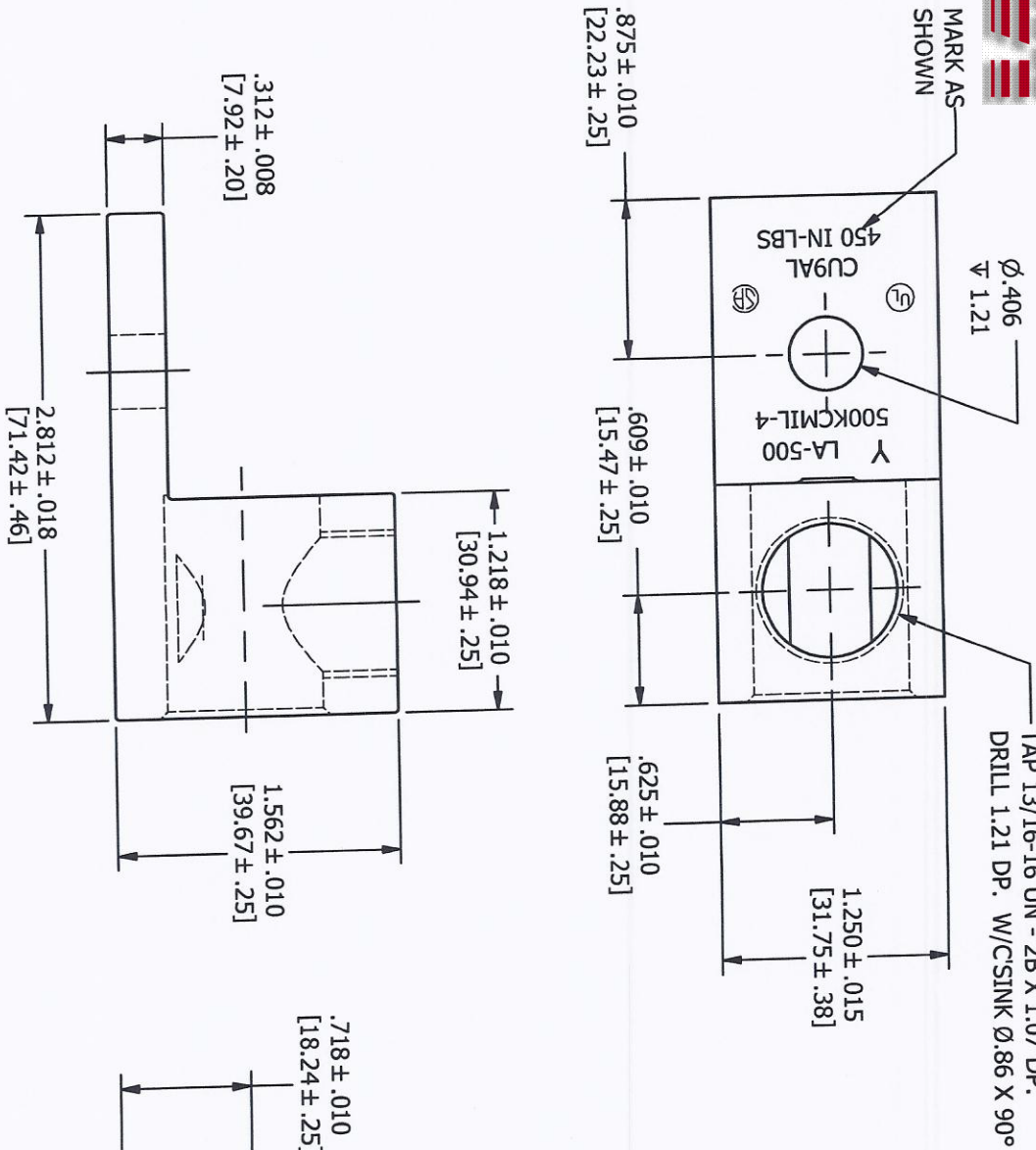
Certifications
 UL UL 486B Dual Rated
 CSA Yes
 RoHS Yes



Cat No.	AWG	Fig.	Wire Range	Box Qty	L	W	H	Bolt	Each
90712	6	1	6STR - 14SOL	100	1.06	0.38	0.5	0.27	
90714	2	1	2STR - 14SOL	100	1.16	0.5	0.56	0.27	
90716	Jan-00	1	1/0STR - 14SOL	50	1.34	0.53	0.69	0.27	
90718	Feb-00	1	2/0STR - 14SOL	50	1.47	0.56	0.75	0.27	
90720	250	1	250MCM - 6SOL	25	1.94	0.82	1	0.33	
90722	350	1	350MCM - 6SOL	25	2.12	0.9	1.09	0.41	
90724	500	1	500MCM - 4SOL	12	2.75	1.38	1.5	0.41	
90726	600	1	600MCM - 2SOL	12	2.75	1.38	1.5	0.41	
90728	750	1	750MCM - 300MCM	3	3.5	1.5	1.75	0.66	



ASM. NO. C00494260
 PART NO. C00210260
 C00021260



FINISH: TIN PLATE CMS-02

$\phi .859 \pm .010 \nabla 1.24$
 $\nabla \phi 0.899 \times 90^\circ$

13/16-16 X 1.00 LG.
 ALUM. SCREW W/.375 HEX
 C04202001 (1 REQ'D)
 ASSEMBLE SCREWS FLUSH
 TO TWO THREADS BELOW TOP.

REV.	DESCRIPTION	ECN	DATE	INT.	UNLESS OTHERWISE SPECIFIED .00 = ± .015 .000 = ± .005 ANGLES = ± 1/2° [X] = DIMENSION IN MILLIMETERS	DRAWN BY: SES 7/11/2003	NAME OF PART: LUG ASSEMBLY	CAT. NO.: 90724
E	ADDED CSINK NOTE, TWO BELOW TOP WAS FLUSH TO TOP, 2.812 +/- .018 WAS +/- .015	13495	10/15/10	EVT		SHEET NO.: 1 OF 1	MATERIAL: 200601025 6061-T6 ALUMINUM	SCALE: 1:1
D	REDRAWN IN INVENTOR		6/3/08	JKO		CROSS REFERENCE # -		