



**Catalog Number** See Table  
**UPC Number**  
**Description** Two Conductor One Hole  
 Copper Mechanical Lug



**Features**

- Manufactured from High Strength High Conductivity Copper Alloy
- Copper Conductor Rated
- Two Conductor One Hole Configuration

**General**

**Material:** 6061-T6 Aluminum Alloy  
**Finish:** Electro-Tin Plating  
**Screw Type:** Steel Hex Head  
**Wire Range:** 2/0 - 350 MCM

**Dimension Information**

See Table

**Specifications**

**Temperature Rating** 90° C  
**Voltage Rating** 600  
**Flammability Rating** N/A  
**Amp Rating** To Conductor

**Packaging**

**Box Qty** See Table

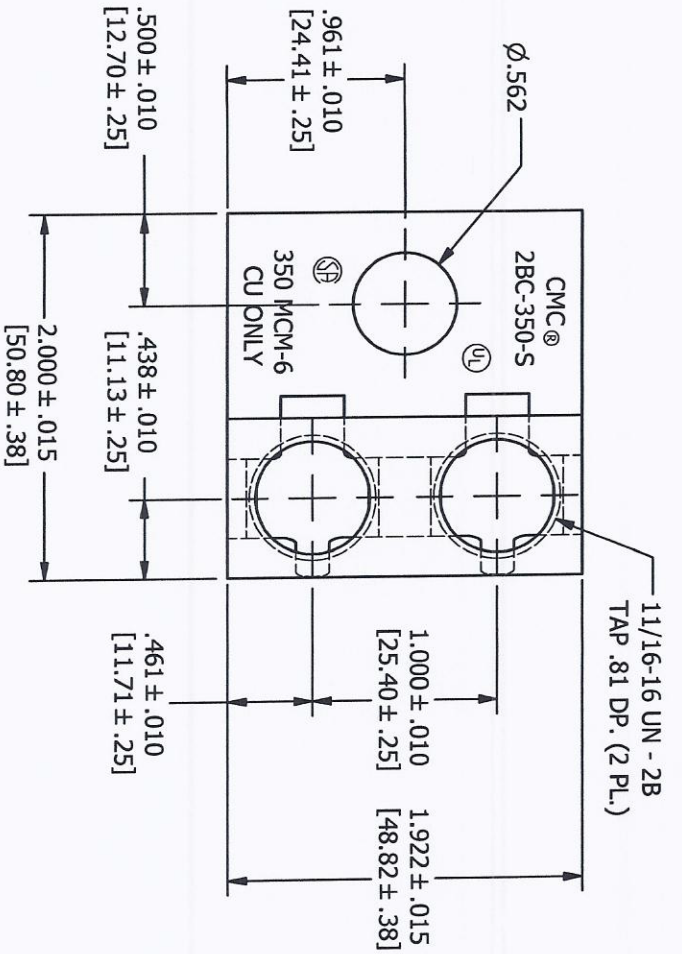
**Certifications**

**UL** UL 486B Dual Rated  
**CSA** Yes  
**RoHS** Yes

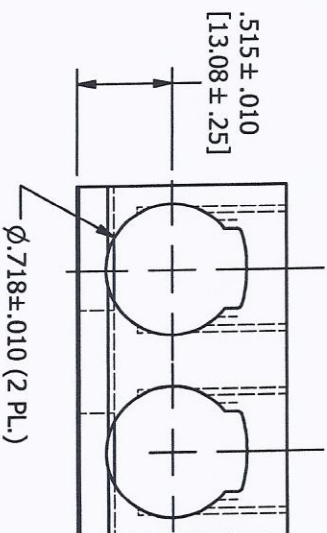
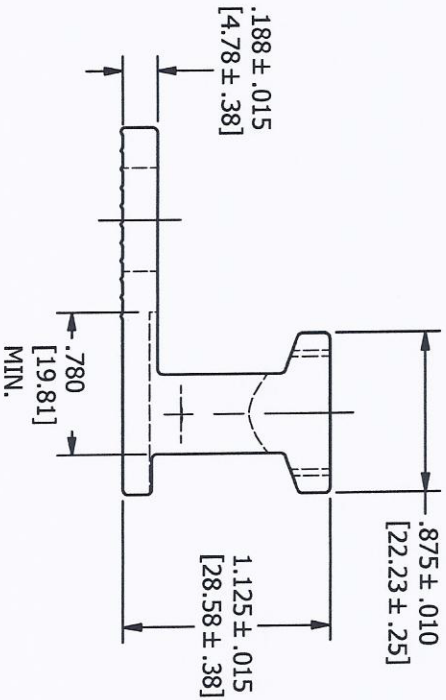
Cat. No.	Fig.	Wire Range	Dimensions			Bolt	Box Qty	Each
			L	W	H			
90591	2	2/0-14	1.25	1.12	0.78	0.41	—	
90592	2	250-6	1.71	1.62	0.97	0.56	—	
90593	2	350-6	2	1.92	1.12	0.56	—	

ASM. NO. C00497073  
 PART NO. C00209073

C00029073



11/16-16 X .75 LG.  
 STEEL SCREW W/.314 HEX.  
 200201016 (2 REQ'D) ASSEMBLE  
 SCREWS FLUSH TO TOP OF  
 CONN. --- 701



FINISH: CLEAN ONLY



REV.	DESCRIPTION	ECN	DATE	INT.	UNLESS OTHERWISE SPECIFIED .00 = ± .015 .000 = ± .005 ANGLES = ± 1/2° [X] = DIMENSION IN MILLIMETERS	DRAWN BY: RFW 12/4/1987	NAME OF PART: DOUBLE (CU) LUG ASS'Y	CAT. NO.: 9 0593
G	REDRAWN IN INVENTOR		8/21/08	JKO		SHEET NO: 1 OF 1	MATERIAL: C00602054 CDA-147 COPPER	SCALE: 1:1
						CROSS REFERENCE # -		