

# 12-Port Wall Mount Category 6 110-Type Patch Panel

## Product Detail



## Overview

12-port Category 6 wall mount patch panel is ideal for wall-mount applications requiring a compact cross-connect 110-type IDC block. The patch panel holds up to twelve ports for centralized cabling connections, and is useful where low-cost, add-as-you-go flexibility for moves, adds, and changes (MACs).

## Features

- 12-port, wall mount, T568A/B wiring, Wall mountable w/ 89D
- 110-Type IDC accepts UTP wire gauge 22-24 AWG
- bracket, T568A/B wiring
- Hinged windows style w/ white labels
- Meet and exceeds ANSI/TIA-568-C requirements
- UL listed

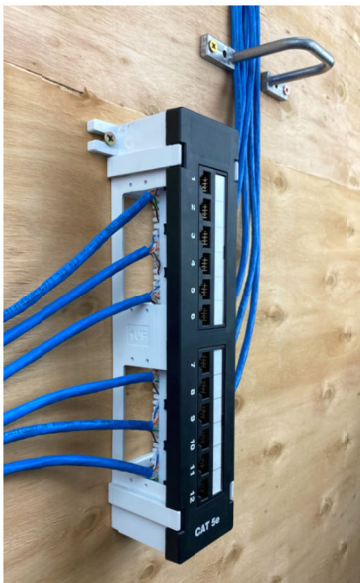
## Standards & Compliance

- UL Listed
- ANSI/TIA-568-C
- RoHS

## Package Includes

- 12-Port CAT6 Wall Mount Patch Panel, 1 PC.
- 89D Mounting Bracket, 1 PC.
- Mounting Screw, 2 PCS.
- 3" Nylon Cable Ties, 6 PCS.
- Installation Instructions

## Application



Part Number	U Size	Port	Category	Package
6EPP12V-S	Wall Mount	12-Port	CAT6	Single Pack