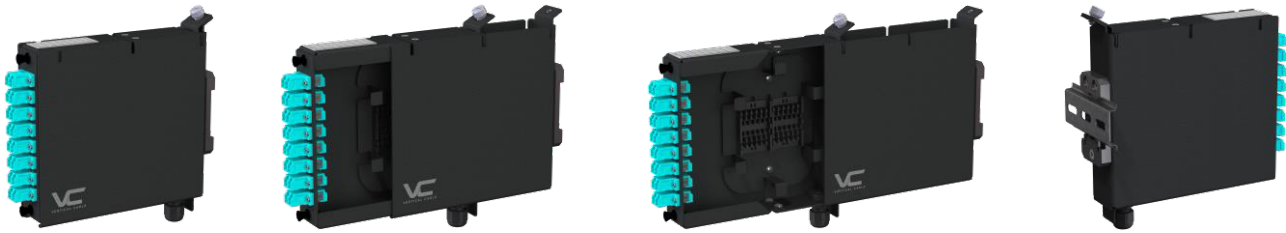


# CROSS-CONNECT

## DIN-rail Modular Cassette

### EZ-Mount Series Cassette



268-EZM01-1A DIN-Rail Modular Cassette, EZ Mount Series

268-EZM01-1A-[xx] DIN-Rail Modular Cassette, EZ Mount Series (other configurations)



## KITTING

### As-delivered:

- 1 × bay;
- 1 × cassette;
- 1 × cable entry adapter, blank;
- 1 × cable entry adapter, application-specific (see configuration part numbers);
- 1 × fiber management stage;
- 1 × 35-mm DIN rail clip;
- 1 × identification label;
- 2 × nylon cable ties;
- 1 × shipping box.

### Not included:

- adapter plates (page **Error! Bookmark not defined.**);
- splice holders (see ACCESSORIES on next page).

## CABLE ENTRY ADAPTERS

Each EZM cassette is supplied with one blank and one specialized cable entry adapter plates (see product configuration descriptions).

Cable entry adapter plates can be ordered separately, which may add flexibility in changing configuration in the field per project requirements.

BLANK	PASS-THROUGH	MPO ADAPTERS		RUBBER GROMMETS		CABLE GLAND
268-EZM01-1A00	268-EZM01-1A01	268-EZM01-1A02	268-EZM01-1A03	268-EZM01-1A04	268-EZM01-1A05	268-EZM01-1A06
	opening size:	connector type:		for cables with ODs:		for cables with ODs:
	40 mm × 20 mm (1.6 in × 0.8 in)	MPO adapter, Type A, compact, flanged, black		≤8 mm (0.3 in)	≤12 mm (0.5 in)*	2 mm–6.5 mm (0.08 in–0.25 in)
		count:		grommet material:		gland form-factor:
		1	2	TPE (thermoplastic elastomer), UL 94 V-2		M12/PG7
		connector mounting orientation:				gland material:
		lateral				PA/CR (polyamide/Neoprene)
plate material: 1.5-mm (15-GA) aluminum alloy						
plate finish: black powder coating (RAL 9005)						
plate dimensions: 60 mm × 30 mm (2.4 in × 1.2 in)						
mounting: four M3 CSK machine screws (included)						

\* 268-EZM01-1A05 due to its grommet size can be used only in the cassette's top position.

ACCESSORIES

- 268-EZM01-1A11 Splice Holder, Set of 1 (includes twelve 40-mm protection sleeves).
- 268-EZM01-1A12 Splice Holder, Set of 2 (includes twenty-four 40-mm protection sleeves).

CHARACTERISTICS

Compatibility:	all Vertical Cable 264-MAP and 264-LAP series adapter plates.
Mounting:	35-mm DIN rail via detachable DIN-rail clip.
Materials:	aluminum alloy; black powder coating.
Capacity:	one LGX adapter plate; up to 24 fibers (264-LAP series adapter plates); up to 6 keystone modules (264-MAP01-1A06 adapter plate); 1 or 2 splice holders, 12 fibers per holder, 24 fibers total; 1 or 2 cable entry point adapters (see Accessories above).
Cable management:	cable anchor points (bridge lances); fiber/splice management stage, removable; set of cable ties.
Dimensions:	width: 35 mm (1.4 in) [2 DU]; height: 170 mm (6.7 in); depth: 150 mm (6 in).
Weight:	350 g (12.5 oz).
Compliance:	IEC/EN 60715; DIN 43880; ANSI/TIA-568.3-D; GR-769; Directive 2011/65/EU Am. 2015/863/EU (RoHS2).
DIN-rail clip:	material: fiberglass-reinforced nylon 66 (PA66, GF: 30 %); width: 35 mm; mounting: spring-loaded latch; compliance: Directive 2011/65/EU Am. 2015/863/EU (RoHS2).
Threaded joints:	SI (metric).
Environmental:	operating temperature: -10 °C–60 °C (14 °F–140 °F); storage temperature: -40 °C–70 °C (-40 °F–158 °F); operating humidity: 93 % RH max non-condensing.