



**Catalog Number** 01414  
**UPC Number** 60198601414  
**Description** Nylon Fully Insulated Female Disconnect 12-10



#### Features

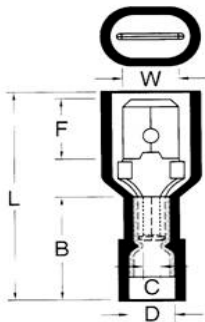
- Nylon Color Coded insulation on barrel and disconnect tab
- Manufactured from high strength copper alloy
- Electro-tin plated for corrosion resistance
- Easy entry expanded insulation eliminates strand “Hang Up”, increases the crimping rates and the reliability of the wire
- Wire range stamped on the surface for easy interpretation
- Brazed seams prevent splitting under maximum pressure
- Serrated barrel & flared position of sleeves provide excellent contact & mechanical stress relief at insulation & barrel junction
- Packed in Zip Lock plastic bags with punched hole for pegboard hanging

#### General

Insulation Type Nylon  
Material Brass  
Finish Electro-Tin Plated  
Color Yellow  
Wire Range 12-10  
Tab Size .032 X .250

#### Dimension Information

Stock Thickness 0.016  
L Inches (mm) 0.945  
B Inches (mm) 0.512  
C Inches (mm) 0.137  
D Inches (mm) 0.248  
F Inches (mm) 0.287  
W Inches (mm) 0.26



#### Specifications

Temperature Rating 167°F (75°C)  
Voltage Rating 300 V  
Flammability Rating UL94V-O  
Amp Rating 24 Amps

#### Packaging

Bag Qty 25  
Master Bag Qty 100

#### Certifications

UL Yes  
cUL Yes  
RoHS Yes

Morris Products 53 Carey Road, Queensbury, NY 12804

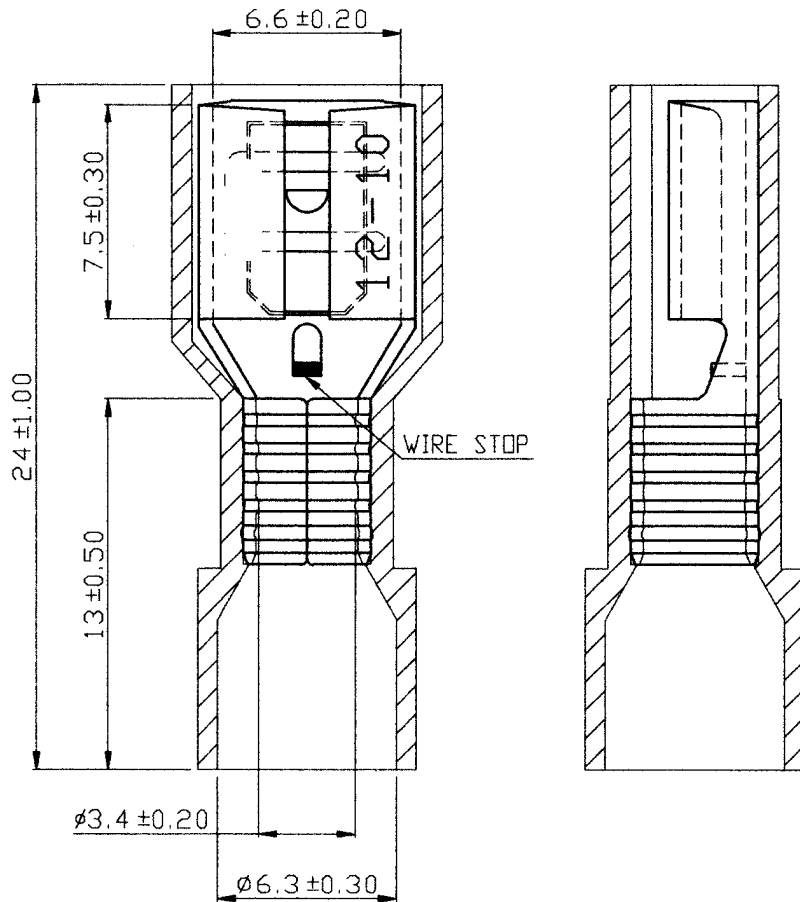
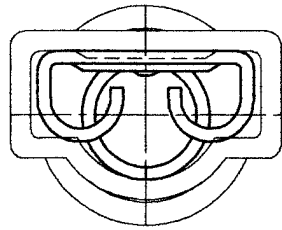
[www.morrisproducts.com](http://www.morrisproducts.com)



REV

DESCRIPTION

DATE



NOTE :

1. MAXIMUM ELECTRIC CURRENT : 

A.W.G.	12	10
AMP.	20	24
2. MAXIMUM ELECTRICAL RATING : 105°C 300 VOLTS MAX.
3. INSULATION MATERIAL : NYLON
4. INSULATION COLOR : YELLOW
5. TERMINAL MATERIAL : BRASS
6. WIRE RANGE : 12-10 A.W.G. ( 4-6 mm<sup>2</sup>)
7. NEMA TAB : 0.032 inch \* 0.250 inch (0.8 mm \* 6.35 mm )
8. TERMINAL SURFACE TREATMENT : TIN PLATED
9. TERMINAL THICKNESS : 0.40 mm

Tolerance Unless Otherwise Specified	
0 > 6 mm ± 0.20	ANGLE
6 > 18 mm ± 0.30	0° REF ±
18 > 30 mm ± 0.40	° ±
30 > 75 mm ± 0.50	° ±

NAME	NYLON-FULLY INSULATED FEMALE DISCONNECTORS			UNIT	
PART NO.	01414	MATERIAL	----	APPROVE	
NUMBER	.....	SCALE	SHEET	PAGE	CHECKED
DATE	2006/04/11	4/1	1-0	10F2	DRAWN

Morris Products Inc.